

Refer to  
this map as:  
40 J/2a  
EDITION 1 MCE  
SERIES A 851

CONVERSION SCALE FOR ELEVATIONS  
Feet  
Metres

Use diagram only to obtain numerical values.  
APPROXIMATE MEAN DECLINATION 1957  
FOR CENTRE OF MAP  
Annual change increasing 2.2"

ONE THOUSAND METRE  
UNIVERSAL TRANSVERSE MERCATOR GRID  
ZONE 17

GRID ZONE DESIGNATION	100,000 M. SQUARE IDENTIFICATION
17 T	LS

EXAMPLE OF METHOD USED  
TO GIVE A REFERENCE TO NEAREST 100 METRES

THE FOLLOWING GRID REFERENCE IS A SIMPLE ONE  
AND DOES NOT REFER TO A POINT ON THIS MAP

99			
98			
97			
96			
95			

REFERENCE POINT CHURCH (as above)

EASTING: Read number on grid line  
immediately to left of point

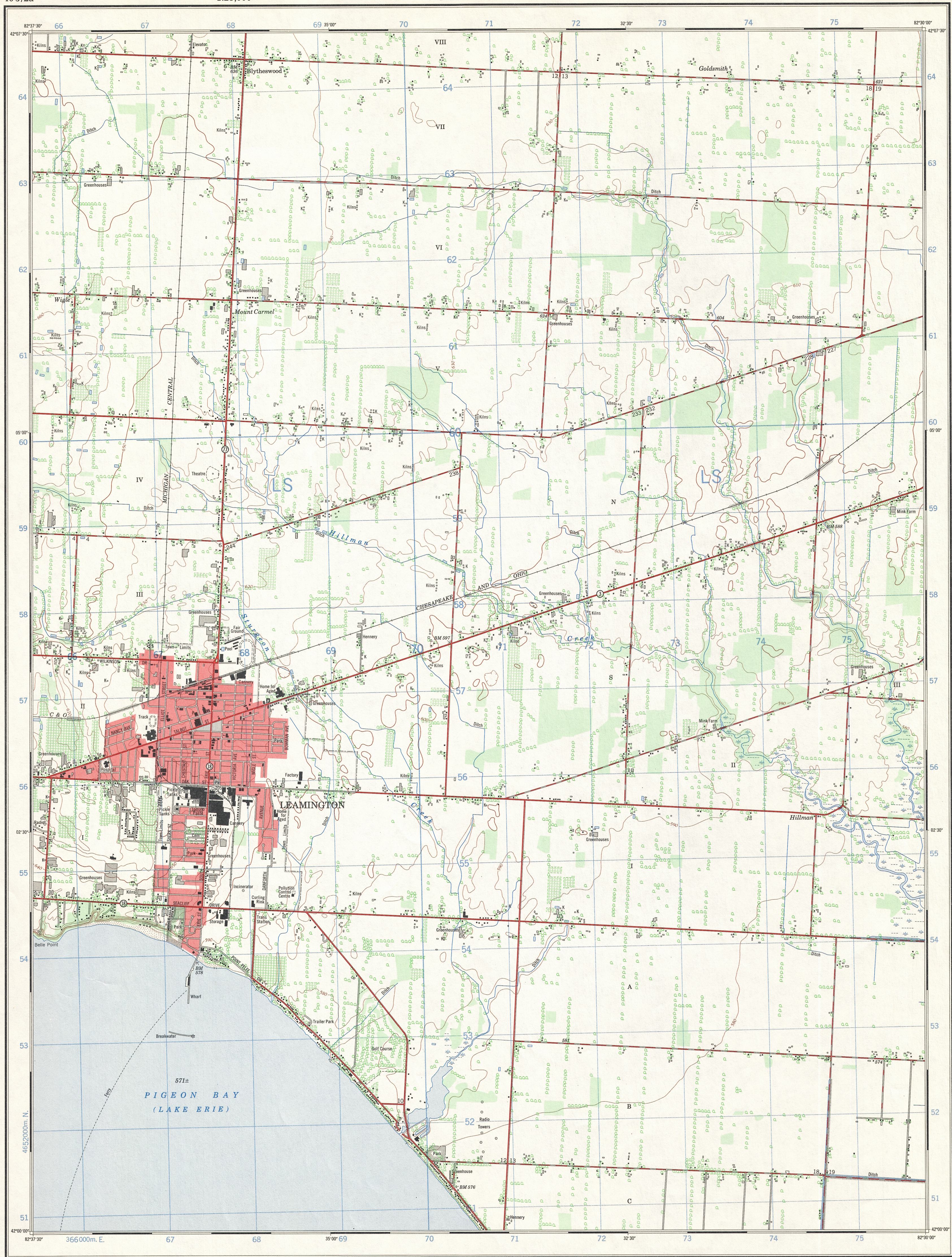
Estimate tenths of a square from  
this line eastward to point

NORTHING: Read number on grid line  
immediately below point

Estimate tenths of a square from  
this line northward to point

EXAMPLE MILITARY GRID REFERENCE 975984

Nearest similar grid reference 100,000 metres (about 63 miles)



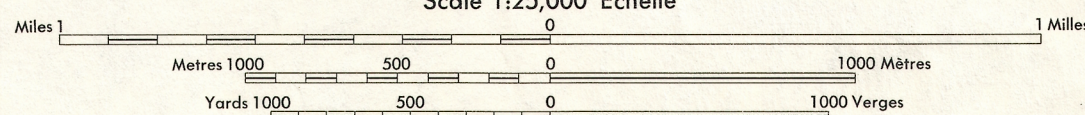
Produced by the SURVEYS AND MAPPING BRANCH,  
DEPARTMENT OF ENERGY, MINES AND RESOURCES.  
Information depicted current as of 1965. Printed 1970.

Copies may be obtained from the Map Distribution Office,  
Department of Energy, Mines and Resources, Ottawa.

## LEAMINGTON

ESSEX COUNTY - MERSEA TOWNSHIP  
ONTARIO

Scale 1:25,000 Échelle



CONTOUR INTERVAL 10 FEET

Elevations in Feet above Mean Sea Level

North American Datum 1927

Transverse Mercator Projection

ÉLOIQUISANCE DES COURBES 10 PIEDS

Élévations en pieds au-dessus du niveau moyen de la mer

Système de référence géodésique nord-américain 1927

Projection transverse de Mercator

Roads:	Routes:	Goal highway	more than 2 lanes
hard surface, all weather	pavée, toute saison	2 shoulders	less than 2 lanes
hard surface, all weather	pavée, toute saison	2 lanes	more than 2 lanes
loose or stabilized surface, all weather	gravier aggloméré, toute saison	2 lanes	more than 2 lanes
loose surface, dry weather	de gravier période sèche	2 lanes or plus	more than 2 lanes
cart track	de terre		
trail or portage	sentier ou portage		
Railway, normal gauge, single track	Chemin de fer, voie unique (écartement normal)	single track	single track
Horizontal control point, with elevation	Point géodésique, avec cote	BM 454	
Bench mark, with elevation	Repère de nivellement, avec cote	BM 157	
Spot elevation, precise	Point coté, précis		450
Mine or open cut	Mine ou fosse à ciel ouvert		

Building	Bâtiment	Church	Église
School	École	Post Office	Bureau de poste
Cemetery	Cimetière	Navigation Light	Feu de navigation
Rock, bare or awash	Roche, nue ou à fleur d'eau		
Power transmission line	Ligne de transport d'énergie		
River with bridge	Rivière avec pont		
Rapids, Falls, large small	Rapides, Chutes, grands, petits		
Lake intermittent, indefinite	Lac intermittent, rive imprécise		
Marsh or Swamp	Marais ou marécage		
Depression contours	Courbes de cuvette		
Trees	Arbres		
Vineyard, Orchard	Vignoble, Verger		

Établi par la DIRECTION DES LEVÉS ET DE LA CARTOGRAPHIE,  
MINISTÈRE DE L'ÉNERGIE, DES MINES ET DES RESSOURCES.  
Renseignements à jour en 1965. Imprimée en 1970.

Des cartes sont en vente au Bureau de distribution des cartes,  
ministère de l'Énergie, des Mines et des Ressources, Ottawa.

TABULARY D'ASSEMBLAGE DU SYSTÈME NATIONAL

DE RÉFÉRENCE CARTOGRAPHIQUE

42°15'00" 42°15'00" 42°15'00"

40 J/2a 40 J/2a 40 J/1a

40 J/2a 40 J/2a 40 J/1a

40 J/15a 40 J/15a 40 J/15a

41°15'30" 41°15'30" 41°15'30"

INDEX TO ADJOINING MAPS OF  
THE NATIONAL TOPOGRAPHIC SYSTEM

LEAMINGTON

40 J/2a

EDITION 1