

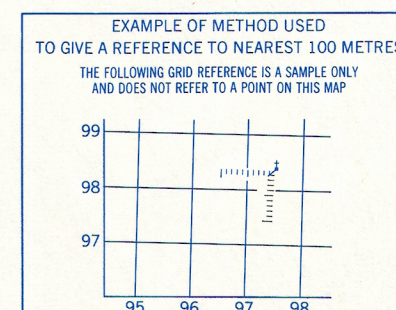
Refer to
this map as: 40-I/13g
EDITION 1 MCE
SERIES A 851

CONVERSION SCALE FOR ELEVATIONS
0 10 20 30 40 50 60 70 80 90 100
Feet
0 10 20 30 40 50 60 70 80 90 100
Metres

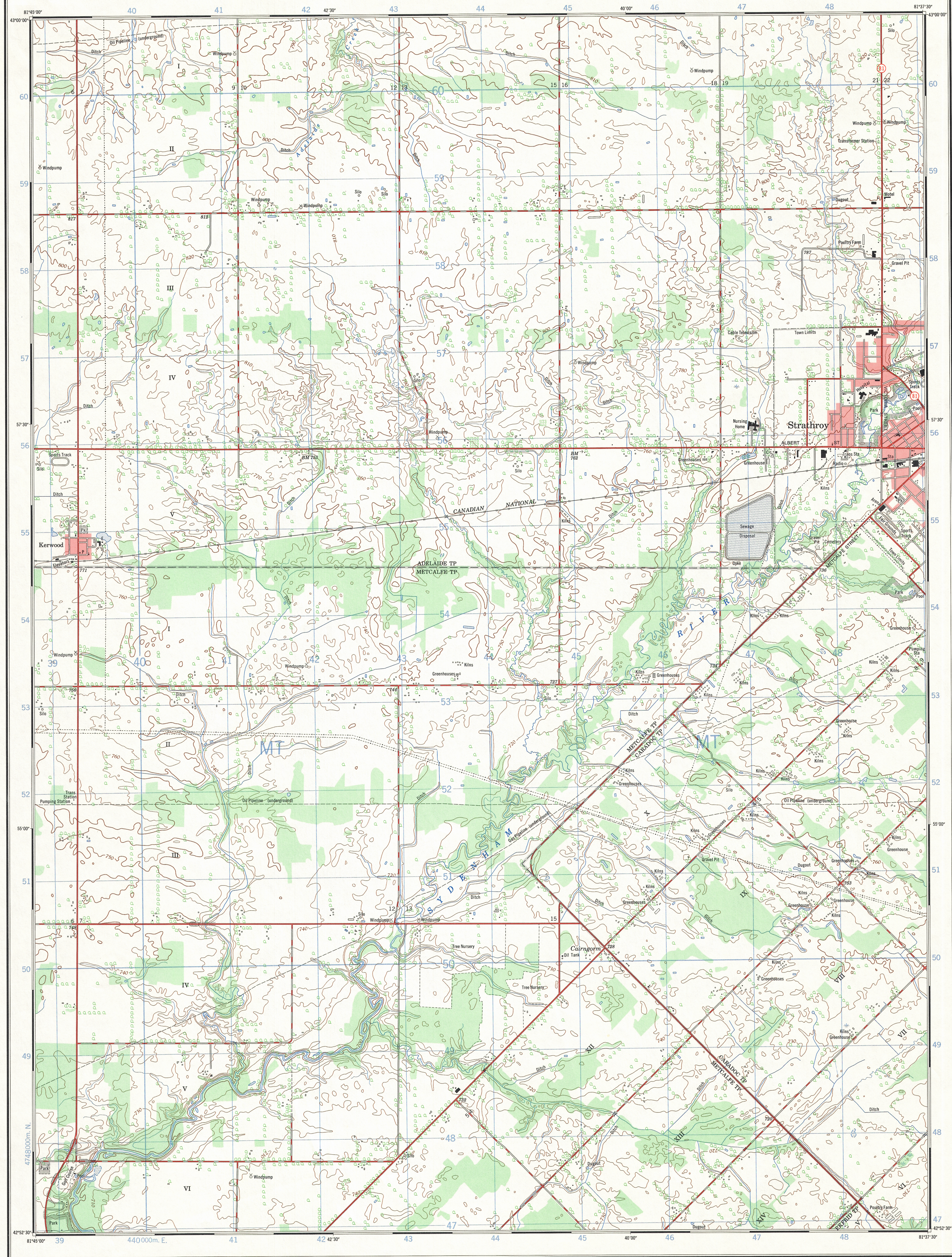
Use diagram only to obtain numerical values.
APPROXIMATE MEAN DECLINATION 1969
FOR CENTRE OF MAP
Annual change increasing 1.9"

ONE THOUSAND METRE
UNIVERSAL TRANSVERSE MERCATOR
ZONE 17

GRID ZONE DESIGNATION	100,000 M. SQUARE IDENTIFICATION
17 T	MT



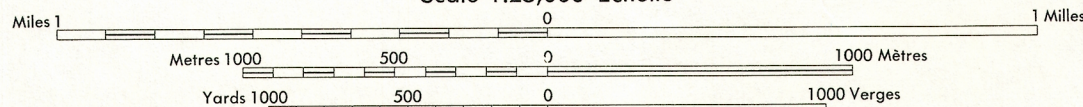
REFERENCE POINT	CHURCH (as above)
EASTING: Read number on grid line immediately to left of point	97
Estimate tenths of a square from this line outward to point	5
NORTHING: Read number on grid line immediately below point	96
Estimate tenths of a square from this line northward to point	4
EXAMPLE MILITARY GRID REFERENCE 975984	
Nearest similar grid reference 100,000 metres (about 63 miles)	



STRATHROY WEST

MIDDLESEX COUNTY
ONTARIO

Scale 1:25,000 Échelle



CONTOUR INTERVAL 10 FEET
Elevations in Feet above Mean Sea Level
North American Datum 1927
Transverse Mercator Projection

ÉQUIDISTANCE DES COURBES 10 PIEDS
Élevations en pieds au-dessus du niveau moyen de la mer
Système de référence géodésique nord-américain, 1927
Projection transverse de Mercator

Building.....Bâtiment.....	Church.....Église.....
School.....École.....	Post Office.....Bureau de poste.....
Cemetery.....Cimetière.....	Navigation Light.....Feu de navigation.....
Rock; bare or awash.....	Power transmission line.....Ligne de transport d'énergie.....
River with bridge.....	River with pontoon.....
Rapids; Falls; large, small.....	Rapids; Chutes; grands, petits.....
Lake intermittent, indefinite.....	Lac intermittent, rive imprécise.....
Marsh or Swamp.....	Marais ou marécage.....
Depression contours.....	Courbes de cuvette.....
Trees.....	Arbres.....
Woods.....	Bois.....
Vineyard, Orchard.....	Vignoble, Verger.....

TABLEAU D'ASSEMBLAGE DU SYSTÈME NATIONAL DE RÉFÉRENCE CARTOGRAPHIQUE			
43°0'30"	81°52'30"	81°50'00"	81°47'30"
40 P/4c	40 P/4b	40 P/4a	
40-I/13i	40-I/13r	40-I/13h	
40-I/13c	40-I/13b	40-I/13a	
42°45'00"	81°52'30"	81°50'00"	81°45'00"

STRATHROY WEST
40-I/13g
EDITION 1

Ce document est le produit d'une numérisation par balayage de la publication originale.

This document was produced by scanning the original publication.

Produced by the SURVEYS AND MAPPING BRANCH,
DEPARTMENT OF ENERGY, MINES AND RESOURCES.
Information depicted current as of 1968. Printed 1972.

Copies may be obtained from the Map Distribution Office,
Department of Energy, Mines and Resources, Ottawa.

Établie par la DIRECTION DES LÈVES ET DE LA CARTOGRAPHIE,
MINISTÈRE DE L'ÉNERGIE, DES MINES ET DES RESSOURCES.
Renseignements à jour en 1968. Imprimée en 1972.

Ces cartes sont en vente au Bureau de distribution des cartes,
ministère de l'Énergie, des Mines et des Ressources, Ottawa.