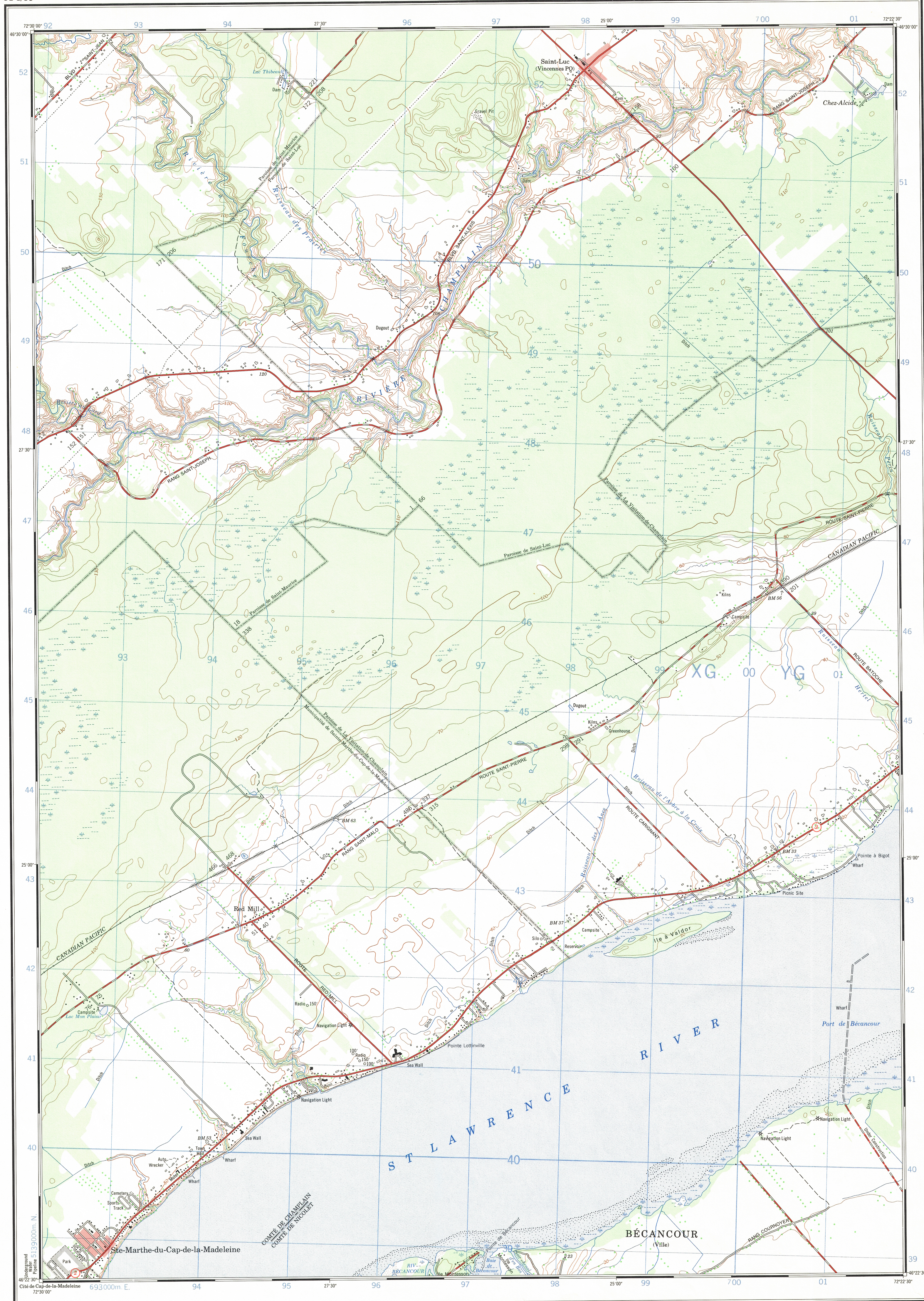
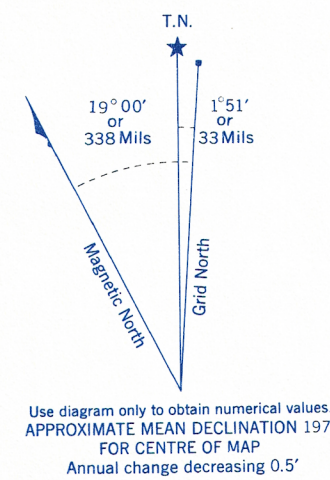


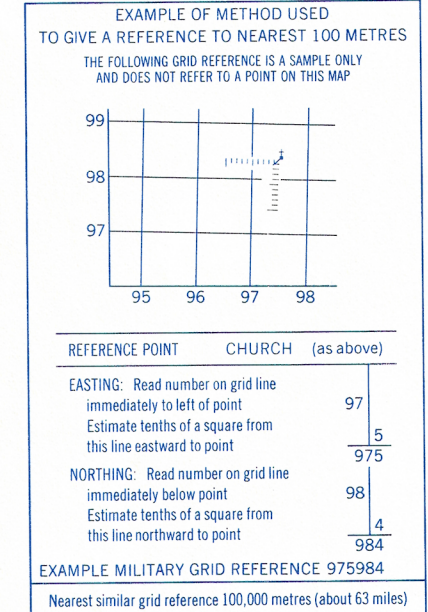
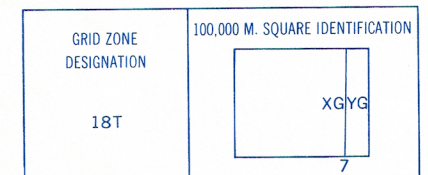
Refer to  
this map as:  
31-1/8e  
EDITION 1 MCE  
SERIES A861



CONVERSION SCALE FOR ELEVATIONS  
Feet  
0 100 200 300 400 500 600 700 800 900 1000  
Metres  
0 100 200 300 400 500 600 700 800 900 1000



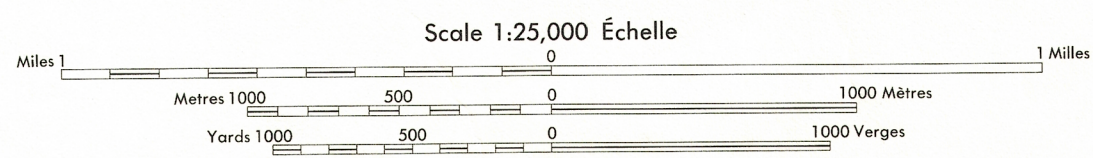
ONE THOUSAND METRE  
UNIVERSAL TRANSVERSE MERCATOR GRID  
ZONE 18



Produced by the SURVEYS AND MAPPING BRANCH,  
DEPARTMENT OF ENERGY, MINES AND RESOURCES.  
Information depicted current as of 1970. Printed 1974.

Copies may be obtained from the Canada Map Office,  
Department of Energy, Mines and Resources, Ottawa,  
or your nearest map dealer.  
© Canada Copyright Reserved 1974

## SAINT-LUC QUÉBEC



CONTOUR INTERVAL 10 FEET  
Elevations in Feet above Mean Sea Level  
North American Datum 1927  
Transverse Mercator Projection

ÉQUIDISTANCE DES COURBES 10 PIEDS  
Élevations en pieds au-dessus du niveau moyen de la mer  
Système de référence géodésique nord-américain, 1927  
Projection transverse de Mercator

Building	Bâtiment	Church	Église
School	École	Post Office	Bureau de poste
Cemetery	Cimetière	Navigation Light	Feu de navigation
Rock; bare or awash	Roche, nue ou à fleur d'eau		
Power transmission line	Ligne de transport d'énergie		
River with bridge	Rivière avec pont		
Rapids; Falls; large small	Rapides, Chutes; grands, petits		
Lake intermittent, indefinite	Lac intermittent, rive imprécise		
Marsh or Swamp	Marais ou marécage		
Depression contours	Courbes de cuvette		
Trees	Arbres		
Woods	Bois		
Vineyard, Orchard	Vignoble, Verger		

TABLEAU D'ASSEMBLAGE DU SYSTÈME NATIONAL DE RÉFÉRENCE CARTOGRAPHIQUE

72°37'30"	72°15'00"	46°37'30"
31-1/10a	31-1/9a	31-1/8a
31-1/7b	31-1/6b	31-1/5b
31-1/7a	31-1/6a	31-1/5a
46°15'00"	46°00'00"	45°45'00"

INDEX TO ADDITIONAL MAPS OF THE NATIONAL TOPOGRAPHIC SYSTEM