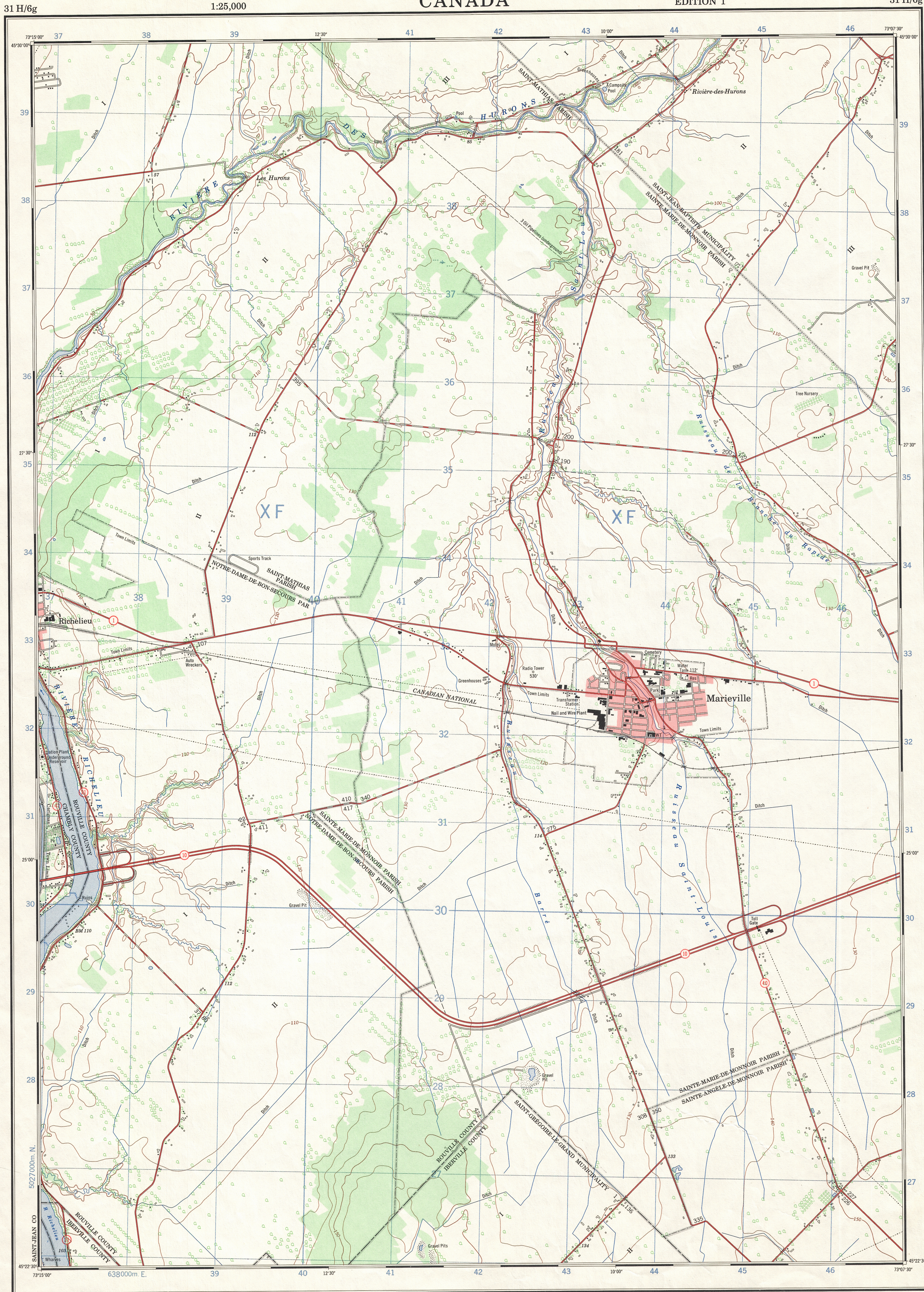


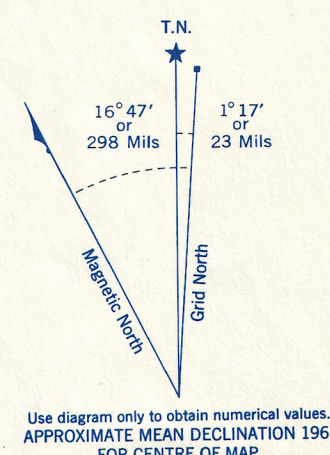
Refer to  
this map as: 31 H/6g  
EDITION 1 MCE  
SERIES A 861

This document was produced  
by scanning the original publication.  
Ce document est le produit d'une  
numérisation par balayage  
de la publication originale.



CONVERSION SCALE FOR ELEVATIONS

30 20 10 0  
100 200 300 400 500 600 700 800 900 1000  
Feet Meters

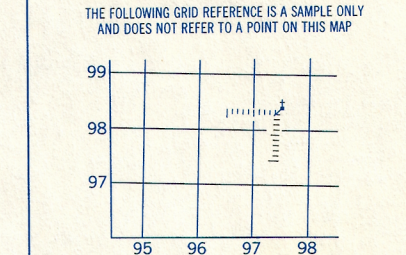


Use diagram only to obtain numerical values.  
APPROXIMATE MEAN DECLINATION 1968  
FOR CENTRE OF MAP

ONE THOUSAND METRE  
UNIVERSAL TRANSVERSE MERCATOR GRID  
ZONE 18

GRID ZONE DESIGNATION	100,000 M. SQUARE IDENTIFICATION
18 T	XF

EXAMPLE OF METHOD USED  
TO GIVE A REFERENCE TO NEAREST 100 METRES



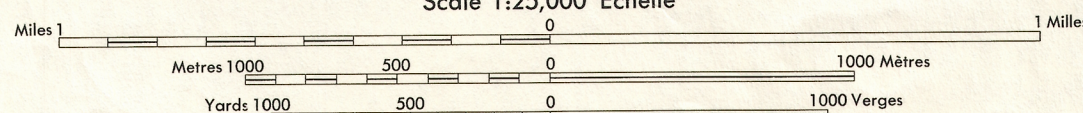
REFERENCE POINT	CHURCH (as above)
EASTING: Read number on grid line immediately to left of point	97
Estimate tenths of a square from this line eastward to point	5
NORTHING: Read number on grid line immediately below point	98
Estimate tenths of a square from this line northward to point	4
EXAMPLE MILITARY GRID REFERENCE	975984
Nearest similar grid reference	100,000 metres (about 62 miles)

Produced by the SURVEYS AND MAPPING BRANCH,  
DEPARTMENT OF ENERGY, MINES AND RESOURCES.  
Information depicted current as of 1968. Printed 1970.

Copies may be obtained from the Map Distribution Office,  
Department of Energy, Mines and Resources, Ottawa.

## MARIEVILLE QUÉBEC

Scale 1:25,000 Échelle

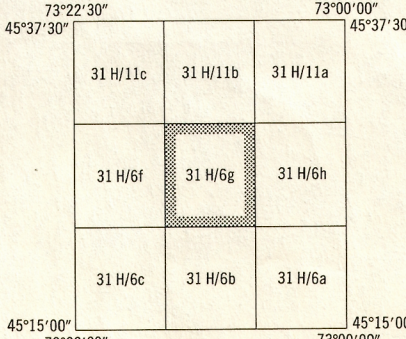


CONTOUR INTERVAL, 10 FEET  
Elevation in Feet above Mean Sea Level  
North American Datum 1927  
Transverse Mercator Projection

ÉLOUSTRANCE DES COURBES 10 PIEDS  
Élévation en pieds au-dessus du niveau moyen de la mer  
Système de référence géodésique nord-américain 1927  
Projection transverse de Mercator

Building.....	Bâtiment.....	Church.....	Église.....
School.....	École.....	Post Office.....	Bureau de poste.....
Cemetery.....	Cimetière.....	Navigation Light.....	Feu de navigation.....
Rock, bare or wash.....	Roche, nue ou à fleur d'eau.....	Ligne de transport d'énergie.....	
Power transmission line.....		Rivière avec pont.....	
River with bridge.....		Rapids, Chutes, grands, petits.....	
Rapids, Falls, large/small.....		Lac intermittent, rive imprécise.....	
Lake intermittent, indefinite.....		Marais ou marécage.....	
Marsh or Swamp.....		Courbes de cuvette.....	
Depression contours.....		Arbres.....	
Trees.....		Bois.....	
Woods.....		Vignoble, Verger.....	
Vineyard, Orchard.....			

TABLÉAU D'ASSEMBLAGE DU SYSTÈME NATIONAL  
DE RÉFÉRENCE CARTOGRAPHIQUE



MARIEVILLE  
31 H/6g  
EDITION 1