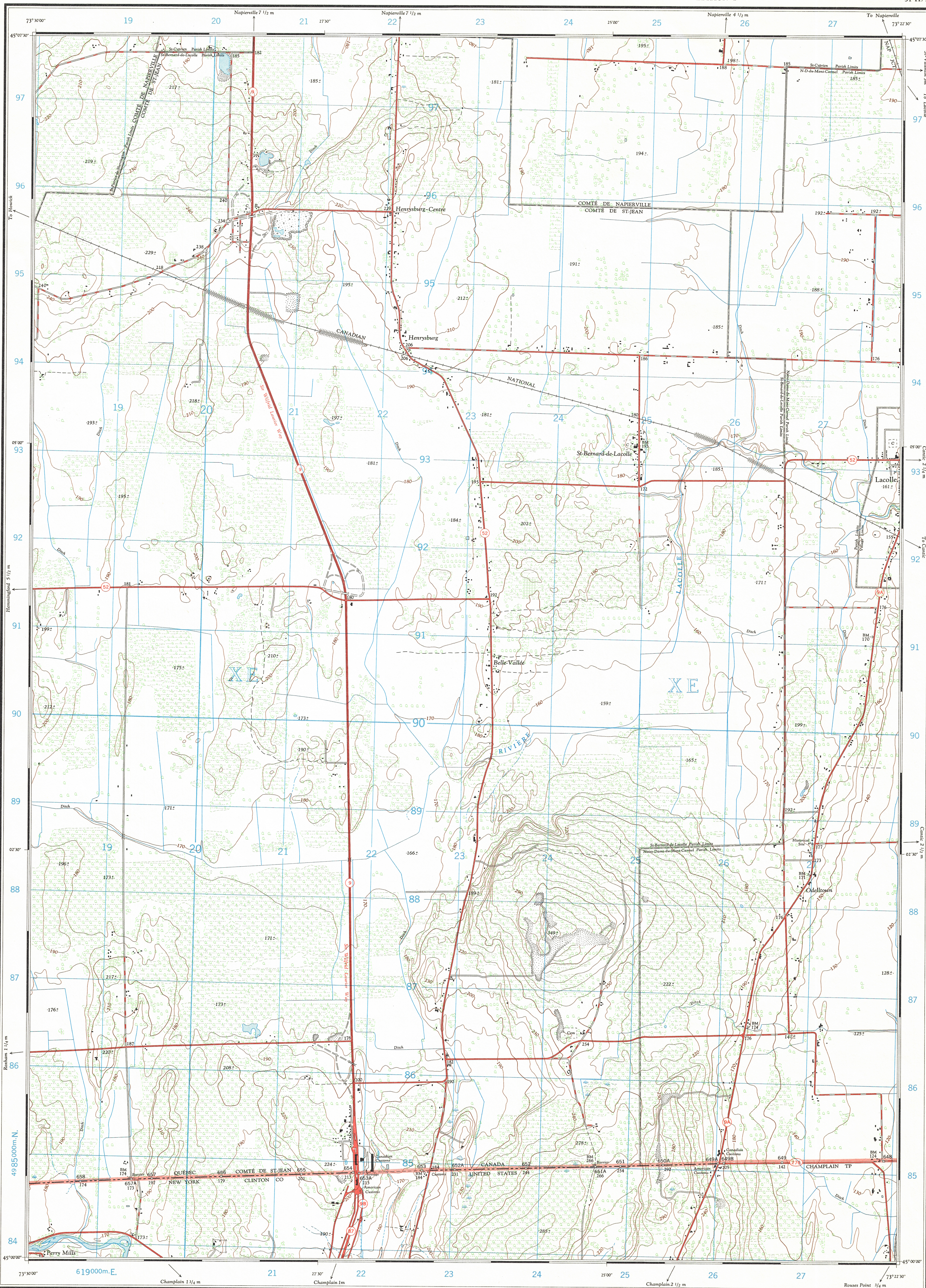


Refer to
this Map as : 31 H/3d
EDITION 2 ASE
SERIES A 861



This document was produced
by scanning the original publication.
Ce document est le produit d'une
numérisation par balayage
de la publication originale.

CONVERSION SCALE FOR ELEVATIONS
Feet
0 100 200 300 400 500 600 700 800 900 1000
Metres
0 100 200 300 400 500 600 700 800 900 1000

Use diagram only to obtain numerical values.
APPROXIMATE MEAN DECLINATION 1966
FOR CENTRE OF MAP
Annual change 0.0'

GRID ZONE
DESIGNATION
18 T

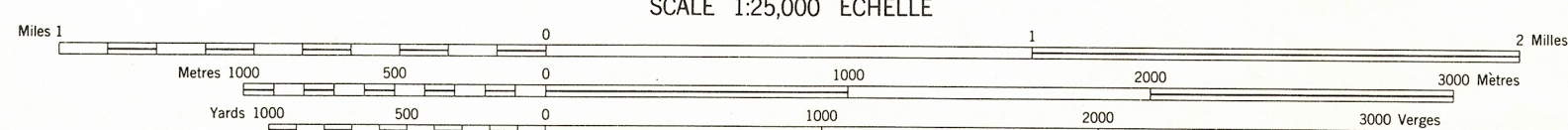
TO GIVE A REFERENCE TO NEAREST 100 METRES
EXAMPLE: SCHOOL
EASTING: Read number on grid line
immediately to left of point.
Estimate tenths of a square from
this line eastward to point.
NORTHING: Read number on grid line
immediately below point.
Estimate tenths of a square from
this line northward to point.
MILITARY GRID REFERENCE 233907
Nearest similar grid reference 100,000 metres (about 63 miles)

ONE THOUSAND METRE
UNIVERSAL TRANSVERSE MERCATOR GRID
ZONE 18

Produced by the ARMY SURVEY ESTABLISHMENT, R.C.E.
Information depicted current as of 1965. Printed 1966.
Copies may be obtained from the Map Distribution Office,
Department of Mines and Technical Surveys, Ottawa.

HENRYSBURG QUÉBEC-NEW YORK

SCALE 1:25,000 ÉCHELLE



Roads: Routes:
hard surface, all weather..... pavés, toute saison.....
hard surface, all weather..... pavés, toute saison.....
loose surface, all weather..... de gravier, toute saison.....
loose surface, dry weather..... de gravier, période sèche.....
cart track..... de terre.....
Rail or portage..... sentier ou portage.....
Railway, normal gauge, single track..... Chemin de fer, voie unique (écartement normal).....
Horizontal control point, with elevation..... Point géodésique, avec cote.....
Bench mark, with elevation..... Repère de nivellement, avec cote.....
Spot elevation, precise, approximate..... Point coté, précis, approximatif.....
Mine or Open cut..... Mine ou fosse à ciel ouvert.....

CONTOUR INTERVAL 10 FEET
Elevations in Feet above Mean Sea Level
Transverse Mercator Projection
North American Datum 1927
MAGNETIC DECLINATION 15°10' WEST
AT CENTRE OF MAP 1966
Annual change 0.0'

ÉQUIDISTANCE DES COURBES 10 PIEDS
Élévations en pieds au-dessus du niveau moyen de la mer
Projection transverse de Mercator
Réseau géodésique nord-américain unifié 1927
DÉCLINAISON MAGNÉTIQUE AU CENTRE
DE LA FEUILLE EN 1966: 15°10' OUEST
Variation annuelle 0.0'

Building..... Bâtiment..... Church..... Église.....
School..... École..... Post Office..... Bureau de poste.....
Cemetery..... Cimetière.....
Lighthouse..... Phare.....
Power transmission line..... Ligne de transport d'énergie.....
River with bridge..... Rivière avec pont.....
Stream, intermittent or dry..... Cours d'eau intermittent, ou à sec.....
Lake, intermittent, indefinite..... Lac intermittent, rive imprécise.....
Marsh or Swamp..... Marais ou marécage.....
Depression contour..... Courbes de cote.....
Woods, deciduous, coniferous..... Forêt bois feuillus, conifères.....
Woods mixed, scrub..... Forêt bois mélangés, arbustes.....
Vineyard, Orchard..... Vignoble, Verger.....

TABLEAU D'ASSEMBLAGE DU SYSTÈME NATIONAL
DE RÉFÉRENCE CARTOGRAPHIQUE

73°30'00"	73°30'00"	73°30'00"
45°00'00"	45°00'00"	45°00'00"
31 H/4h	31 H/3h	31 H/3f
31 H/4a	31 H/3d	31 H/3c
USA	USA	USA

INDEX TO ADJOINING MAPS OF
THE NATIONAL TOPOGRAPHIC SYSTEM

HENRYSBURG
31 H/3d
EDITION 2

A.M.S. 6374 111SW
SERIES B821