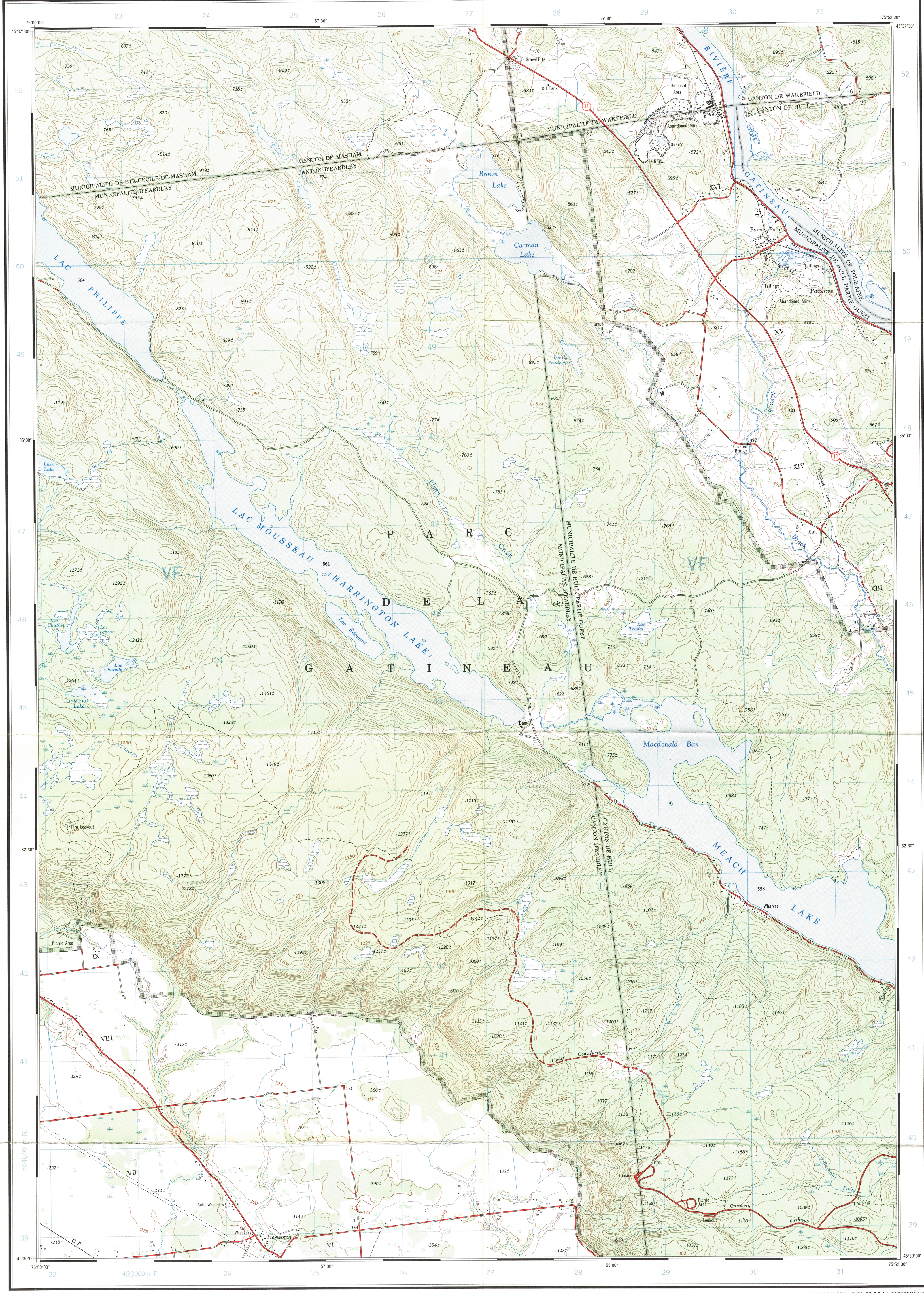
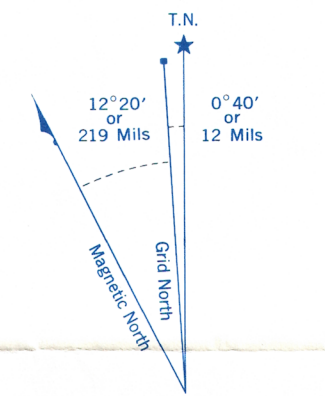
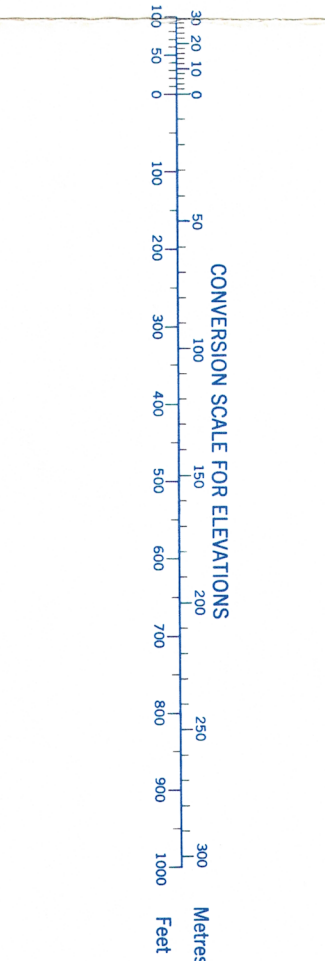


This document was produced by scanning the original publication.



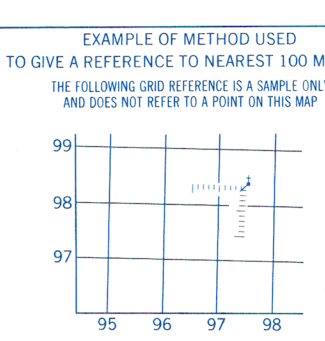
Refer to this map as: 31G/12d EDITION 2 MCE SERIES A 861



Use diagram only to obtain numerical values. APPROXIMATE MEAN DECLINATION 1972 FOR CENTRE OF MAP. Annual change decreasing 0.2°.

ONE THOUSAND METRE UNIVERSAL TRANSVERSE MERCATOR GRID ZONE 18

GRID ZONE DESIGNATION	100,000 M. SQUARE IDENTIFICATION
18 T	VF



REFERENCE POINT	CHURCH (as above)
EASTING. Read number on grid line immediately to left of point. Estimate tenths of a square from this line eastward to point.	97 5 97.5
NORTHING. Read number on grid line immediately below point. Estimate tenths of a square from this line northward to point.	98 4 98.4

EXAMPLE MILITARY GRID REFERENCE 975984

Nearest similar grid reference 100,000 metres (about 63 miles)

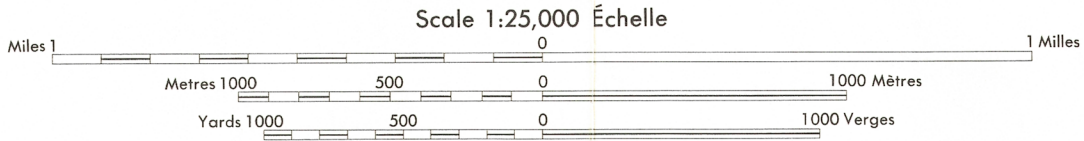
Produced by the SURVEYS AND MAPPING BRANCH, DEPARTMENT OF ENERGY, MINES AND RESOURCES. Updated from aerial photographs taken in 1968. Culture check 1970. Printed 1972.

Copies may be obtained from the Map Distribution Office, Department of Energy, Mines and Resources, Ottawa.

© Canada Copyrights reserved 1972

# LAC MOUSSEAU (HARRINGTON LAKE)

COMTE DE GATINEAU - GATINEAU COUNTY  
QUÉBEC



Roads:	Routes:	2-lane highway	more than 2 lanes
hard surface, all weather	pavée, toute saison	2-lane highway	more than 2 lanes
hard surface, all weather	pavée, toute saison	2-lane highway	more than 2 lanes
loose or stabilized surface, all weather	gravier aggloméré, toute saison	2-lane highway	more than 2 lanes
loose surface, dry weather	de gravier, période sèche	2-lane highway	more than 2 lanes
cart track	de terre	2-lane highway	more than 2 lanes
trail or portage	sentier ou portage	2-lane highway	more than 2 lanes
Railway, normal gauge, single track	Chemin de fer, voie unique (écartement normal)	2-lane highway	more than 2 lanes
Horizontal control point, with elevation	Point géodésique, avec cote	2-lane highway	more than 2 lanes
Bench mark, with elevation	Repère de nivellement, avec cote	2-lane highway	more than 2 lanes
Spot elevation, precise	Point cote précis	2-lane highway	more than 2 lanes
Mine or open cut	Mine ou fosse à ciel ouvert	2-lane highway	more than 2 lanes

CONTOUR INTERVAL 25 FEET  
Elevations in Feet above Mean Sea Level  
North American Datum 1927  
Transverse Mercator Projection

Building	Bâtiment	Church	Eglise
School	Ecole	Post Office	Bureau de poste
Cemetery	Cimetière	Navigation Light	Feu de navigation
Rock, bare or wash			
Power transmission line			
River with bridge			
Rapids, Falls, large, small			
Lake intermittent, indefinite			
Marsh or Swamp			
Depression contours			
Trees			
Woods			
Vineyard, Orchard			

Établie par la DIRECTION DES LEVÉS ET DE LA CARTOGRAPHIE, MINISTÈRE DE L'ÉNERGIE, DES MINES ET DES RESSOURCES. Mise à jour à l'aide de photographies aériennes prises en 1969. Vérification des ouvrages en 1970. Imprimé en 1972.

Ces cartes sont en vente au Bureau de distribution des cartes, ministère de l'Énergie, des Mines et des Ressources, Ottawa.

© Canada 1972, tous droits réservés

TOPOGRAPHICAL SURVEY DIRECTORATE  
SERVICE TOPOGRAPHIQUE

DATE 29-1-80  
Q.C. APPROVES RELEASE  
C.Q. APPROUVE

TABLEAU D'ASSEMBLAGE DU SYSTÈME NATIONAL DE RÉFÉRENCE CARTOGRAPHIQUE			
45°45'00"		45°45'00"	
31 F/8	31 G/12a	31 G/12j	
31 F/9	31 G/12a	31 G/12k	
31 F/8	31 G/12a	31 G/12l	
31 F/8	31 G/12a	31 G/12m	
45°22'30"			

LAC MOUSSEAU (HARRINGTON LAKE)  
31 G/12d  
EDITION 2

REPRINT