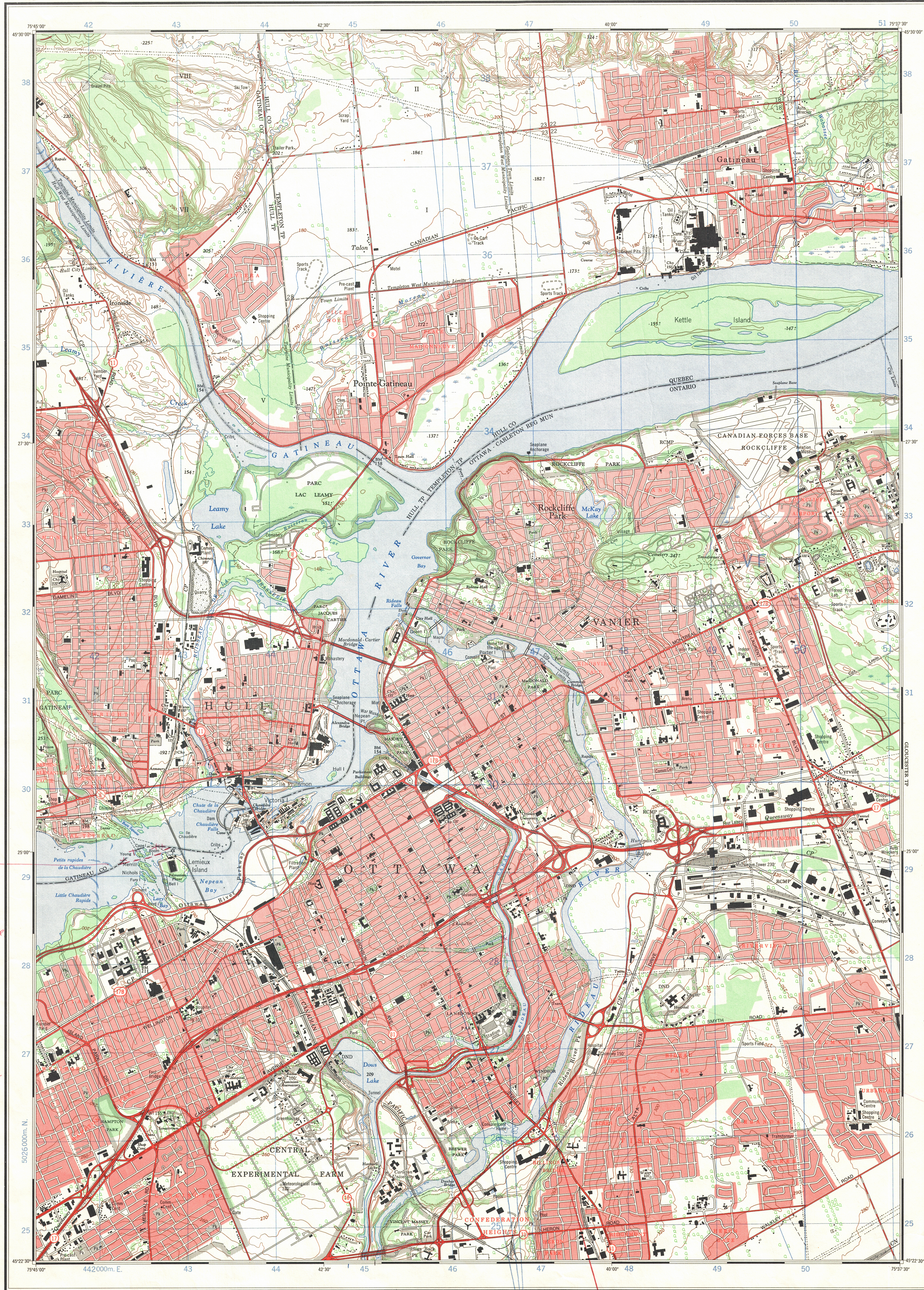


Refer to this map as: 31 G/5g
EDITION 3 MCE
SERIES A 851



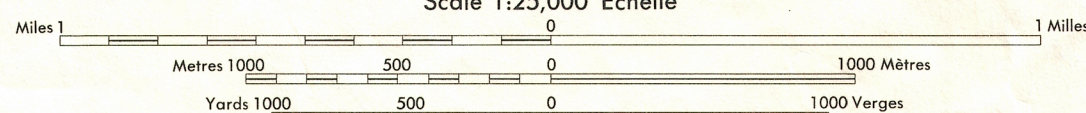
Second edition map updated by the SURVEYS AND MAPPING BRANCH, DEPARTMENT OF ENERGY, MINES AND RESOURCES. Information depicted current as of 1968. Printed 1971.

Copies may be obtained from the Map Distribution Office, Department of Energy, Mines and Resources, Ottawa.

OTTAWA

ONTARIO - QUÉBEC

Scale 1:25,000 Échelle



CONTOUR INTERVAL 10 FEET
Elevations in Feet above Mean Sea Level
North American Datum 1927
Transverse Mercator Projection

ÉQUIDISTANCE DES COURBES 10 PIEDS
Élevations en pieds au-dessus du niveau moyen de la mer
Système de référence géodésique nord-américain, 1927
Projection transverse de Mercator

Roads:	Routes:
hard surface, all weather.....	pavée, toute saison.....
hard surface, all weather.....	pavée, toute saison.....
loose or stabilized surface, all weather.....	gravier aggloméré, toute saison.....
loose surface, dry weather.....	de graviers, période sèche.....
cart track.....	de terre.....
trail or portage.....	sentier ou portage.....
Railway, normal gauge, single track.....	Chemin de fer, voie unique (écartement normal).....
Horizontal control point, with elevation.....	Point géodésique, avec cote.....
Bench mark, with elevation.....	Repère de nivellement, avec cote.....
Spot elevation, precise.....	Point coté, précis.....
Mine or open cut.....	Mine ou fosse à ciel ouvert.....

Building.....	Bâtiment.....	Church.....	Église.....
School.....	École.....	Post Office.....	Bureau de poste.....
Cemetery.....	Cimetière.....	Navigation Light.....	Feu de navigation.....
Rock, bare or awash.....	Roche, nue ou à fleur d'eau.....	Power transmission line.....	Ligne de transport d'énergie.....
River with bridge.....	Rivière avec pont.....	Rapids, falls, large small.....	Rapides, Chutes grands, petits.....
Lake intermittent, indistinct.....	Lac intermittent, rive imprécise.....	Marsh or Swamp.....	Marais ou marécage.....
Depression contours.....	Courbes de cuvette.....	Trees.....	Arbres.....
Woods.....	Bois.....	Vineyard, Orchard.....	Vignoble, Verger.....

TABLEAU D'ASSEMBLAGE DU SYSTÈME NATIONAL DE RÉFÉRENCE CARTOGRAPHIQUE

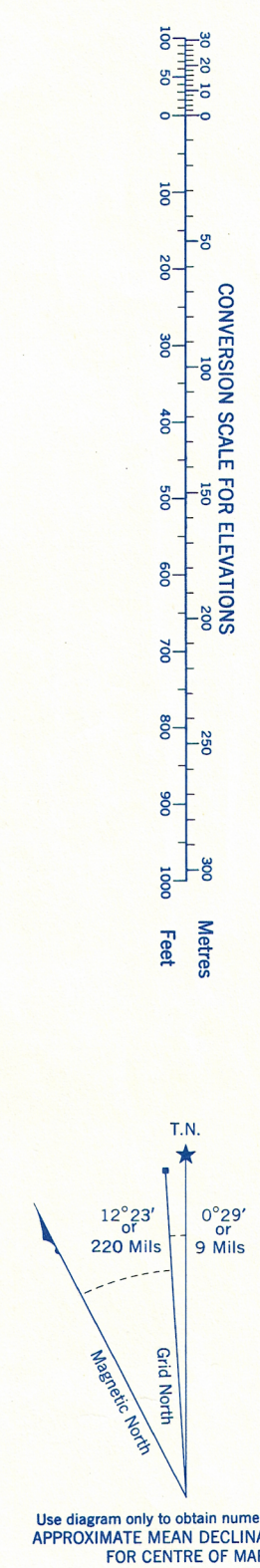
75°52'30"	49°37'30"	49°37'30"	49°37'30"
31 G/12c	31 G/12b	31 G/12a	
31 G/5f	31 G/5g	31 G/5h	
31 G/5c	31 G/5e	31 G/5a	
49°37'30"	49°37'30"	49°37'30"	49°37'30"

OTTAWA
31 G/5g
EDITION 3

This document was produced
by scanning the original publication.

alter Boundary
as shown -
as per map by Dept of
Planning - works
city of Ottawa
(1957) J.G. Howard

using I. app. on
Boon L. the site
base L.
taken from City of Ottawa
map by Dept of Planning
with 1959, plus old
map of ship canal
survey by W. Sharkey
and his engineer and the
shown as an correction
copy and unless further
information is provided
from C.P.C.G.N.
Aug 63 L.B.



ONE THOUSAND METRE
UNIVERSAL TRANSVERSE MERCATOR GRID
ZONE 18

GRID ZONE DESIGNATION	100,000 M. SQUARE IDENTIFICATION
18 T	V F

EXAMPLE OF METHOD USED TO GIVE A REFERENCE TO NEAREST 100 METRES THE FOLLOWING REFERENCE IS A SIMPLE ONE AND DOES NOT REFER TO A POINT ON THIS MAP

REFERENCE POINT	CHURCH (as above)
EASTING: Read number on grid line immediately to left of point	97
Estimate tenths of a square from this line eastward to point	5
NORTHING: Read number on grid line immediately below point	98
Estimate tenths of a square from this line northward to point	4
EXAMPLE MILITARY GRID REFERENCE	97504
Nearest similar grid reference	100,000 metres (about 63 miles)

Wolfe this contour
see page of contours
in pocket.

Should read
210 OCT 64. A.M.