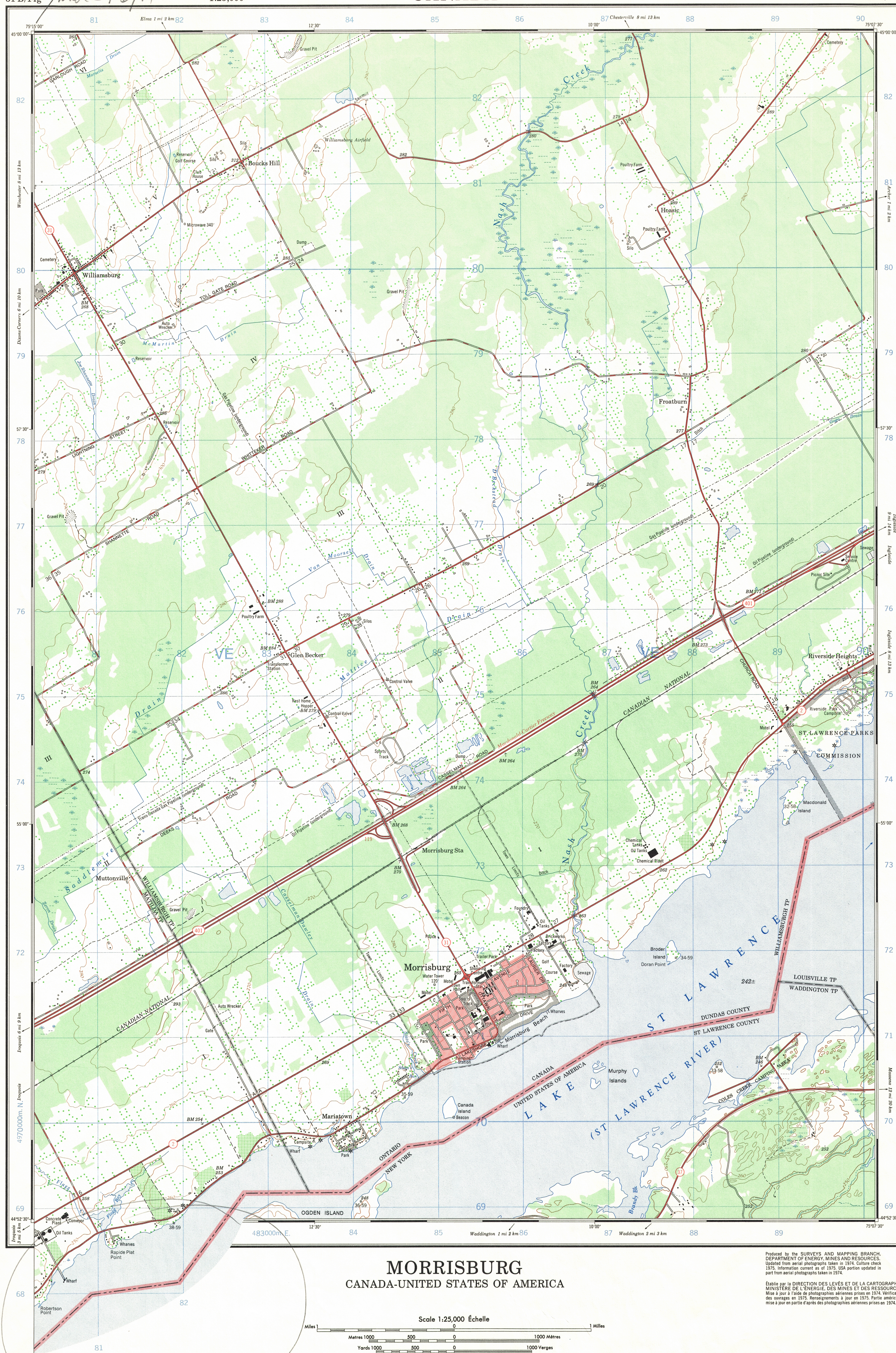


This document was produced
by scanning the original publication.



Mètres 20 10 0
 Feet 100 50 0
 100 200 300 400 500 600 700 800 900 1000
 50 100 150 200 250 300 350 400 450 500
 Echelle de Conversion des Elevations
 200 300 400 500 600 700 800 900 1000
 Meters Feet

Diagram illustrating the relationship between True North (TN), Magnetic North (NG), and Grid North (OG) for a map.

- TN** (True North) is indicated by a star at the top.
- NG** (Magnetic North) is indicated by an arrow pointing towards the top-left.
- OG** (Grid North) is indicated by an arrow pointing towards the top-left, further left than NG.
- The angle between TN and NG is labeled **13°08' ou 233 Mils**.
- The angle between NG and OG is labeled **0°08' ou 2 Mils**.
- The angle between TN and OG is labeled **Différence = 13°16' ou 235 Mils**.

Use diagram only to obtain numerical values
APPROXIMATE MEAN DECLINATION 1976
 AU CENTRE DE LA CARTE
 Annual change decreasing 0.3'

Utiliser le diagramme pour obtenir les valeurs numériques
DECLINAISON MOYENNE APPROXIMATIVE
 AU CENTRE DE LA CARTE EN 1976
 Variation annuelle, décroissance 0,3'

ONE THOUSAND METRE
UNIVERSAL TRANSVERSE MERCATOR GRID
ZONE 18
QUADRILLAGE DE MILLE MÈTRES
TRANSVERSE UNIVERSUEL DE MERCATOR

<p>GRID ZONE DESIGNATION: DESIGNATION DE LA ZONE DU QUADRILLAGE:</p> <p>18T</p>	<p>100,000 M. SQUARE IDENTIFICATION IDENTIFICATION DU CARRÉ DE 100,000 M.</p> <p>VE</p>
---	---


EXAMPLE OF METHOD USED TO GIVE A REFERENCE TO NEAREST 100 METRES		
EXEMPLE DE LA METHODE EMPLOYÉE POUR DONNER DES REPÈRES À 100 MÈTRES PRÈS		
	99  98	
REFERENCE POINT	CHURCH - ÉGLISE	(as above) (ci-dessus)
POINT OF REFERENCE		
EASTING. Read number on grid line immediately to left of point.		
LONGITUDE EAST. Note le chiffre de la ligne de gauche immédiatement antérieure à gauche du repère.		
Estimate length of a square from this line eastward to point.		97
Estimate twice the diameter of the circle across cette ligne et le repère en direction est.		<u>15</u>
		97.5
NORTHING. Read number on grid line immediately below point.		
LATITUDE NORTH. Note le chiffre de la ligne de gauche immédiatement inférieure au dessous du repère.		
Estimate length of a square from this line northward to point.		98
Estimer le nombre de diamètres du carré entre cette ligne et le repère en direction nord.		<u>4</u>
		98.4
GRID REFERENCE	À QUADRILLAGE:	975984

TABLEAU D'ASSEMBLAGE DU SYSTÈME NATIONAL
DE RÉFÉRENCE CARTOGRAPHIQUE

75°22'30"	75°00'00"		
45°07'30"	31 G/3c	31 G/3b	31 G/3a
	31 B/14i	31 B/4g	31 B/14h
	31 B/14c	USA	USA
44°45'00"	44°45'00"		
75°22'30"	75°00'00"		

INDEX TO ADJOINING MAPS OF
THE NATIONAL TOPOGRAPHIC SYSTEM

MORRISBURG
31 B/14g
EDITION 2