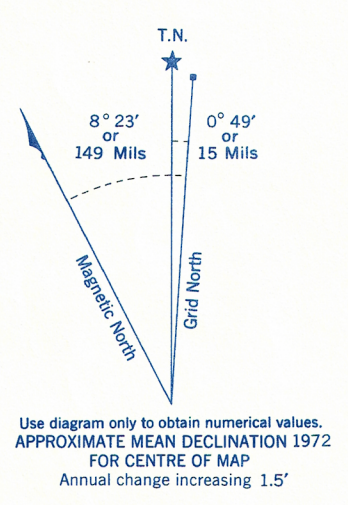


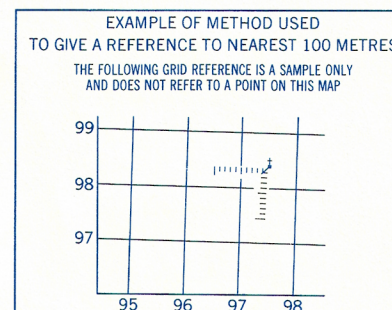
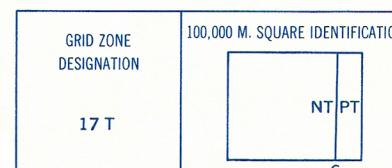
10/7/70
James Street
Personnel
still existing
Star Patrol site
still existing
by field office
D.V.D. Brown at
Victoria Island

CONVERSION SCALE FOR ELEVATIONS

Feet
Metres

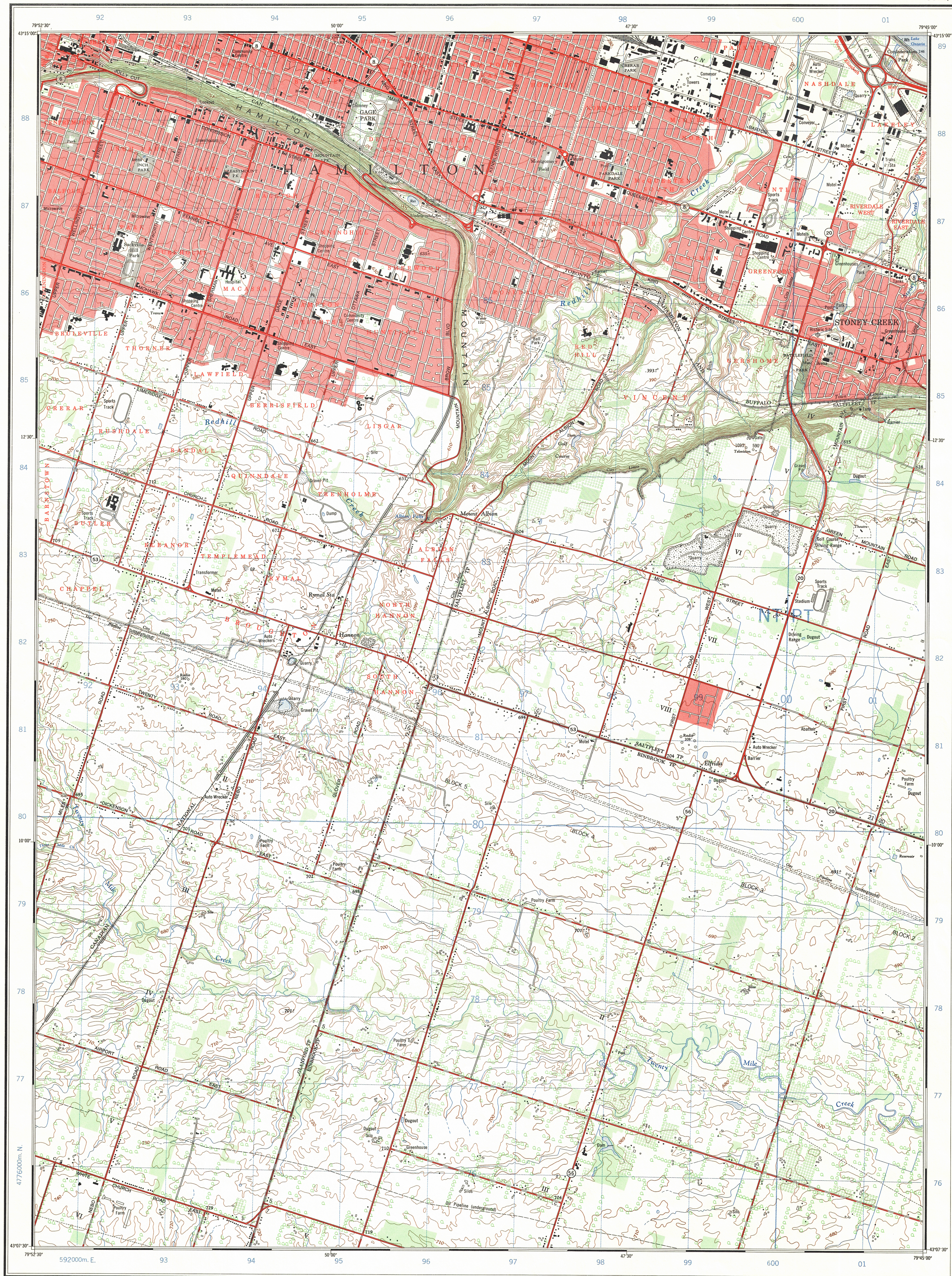


ONE THOUSAND METRE
UNIVERSAL TRANSVERSE MERCATOR GRID
ZONE 17



REFERENCE POINT	CHURCH	(as above)
EASTING: Road number on grid line immediately to left of point	97	
Estimate tenths of a square from this line eastward to point	5	975
NORTHING: Road number on grid line immediately below point	98	
Estimate tenths of a square from this line northward to point	4	984

EXAMPLE MILITARY GRID REFERENCE: 975984
Nearest similar grid reference 100,000 metres (about 63 miles)



Produced by the SURVEYS AND MAPPING BRANCH,
DEPARTMENT OF ENERGY, MINES AND RESOURCES.
Information depicted current as of 1969. Printed 1973.
Copies may be obtained from the Canada Map Office,
Department of Energy, Mines and Resources, Ottawa,
or your nearest map dealer.
© Canada Copyrights Reserved 1973

MOUNT ALBION

WENTWORTH COUNTY
ONTARIO

Scale 1:25,000 Échelle
Miles 1
Metres 1000 500 0 1000
Yards 1000 500 0 1000

CONTOUR INTERVAL 10 FEET
Elevations in Feet above Mean Sea Level
North American Datum 1927
Transverse Mercator Projection

ÉQUIDISTANCE DES COURBES 10 PIEDS
Élévations en pieds au-dessus du niveau moyen de la mer
Système de référence géodésique nord-américain, 1927
Projection transverse de Mercator

Building	Bâtiment	Church	Église
School	École	Post Office	Bureau de poste
Cemetery	Cimetière	Navigation Light	Feu de navigation
Rock, bare or wash	Roche, nue ou à fleur d'eau		
Power transmission line	Ligne de transport d'énergie		
River with bridge	Rivière avec pont		
Rapids, Falls, large, small	Rapides, Chutes, grands, petits		
Lake intermittent, indefinite	Lac intermittent, rive imprécise		
Marsh or Swamp	Marais ou marécage		
Depression contours	Courbes de cuvette		
Trees	Arbres		
Woods	Bois		
Vineyard, Orchard	Vignoble, Verger		

Tableau d'assemblage du Système national de référence cartographique	
80°00' 00"	79°37' 30"
43°22' 30"	43°22' 30"
30 M/5d	30 M/5e
30 M/4d	30 M/4f
30 M/4d	30 M/4c
30 M/4d	30 M/4b
43°00' 00"	43°00' 00"
80°00' 00"	79°37' 30"

Index to adjoining Maps of National Topographic System

MOUNT ALBION
30 M/4f
EDITION 3