

Refer to  
this map as:  
30 L/13h  
EDITION 1 MCE  
SERIES A 851

CONVERSION SCALE FOR ELEVATIONS

1000 900 800 700 600 500 400 300 200 100 0

Feet

3000 2700 2400 2100 1800 1500 1200 900 600 300 0

Meters

T.N.  
7° 45' 0" 0' 59" 0' 17 Mils  
Magnetic North  
Grid North

Use diagram only to obtain numerical values.  
APPROXIMATE MEAN DECLINATION 1967  
FOR CENTRE OF MAP  
Annual change increasing 1.6'

ONE THOUSAND METRE  
UNIVERSAL TRANSVERSE MERCATOR GRID  
ZONE 17

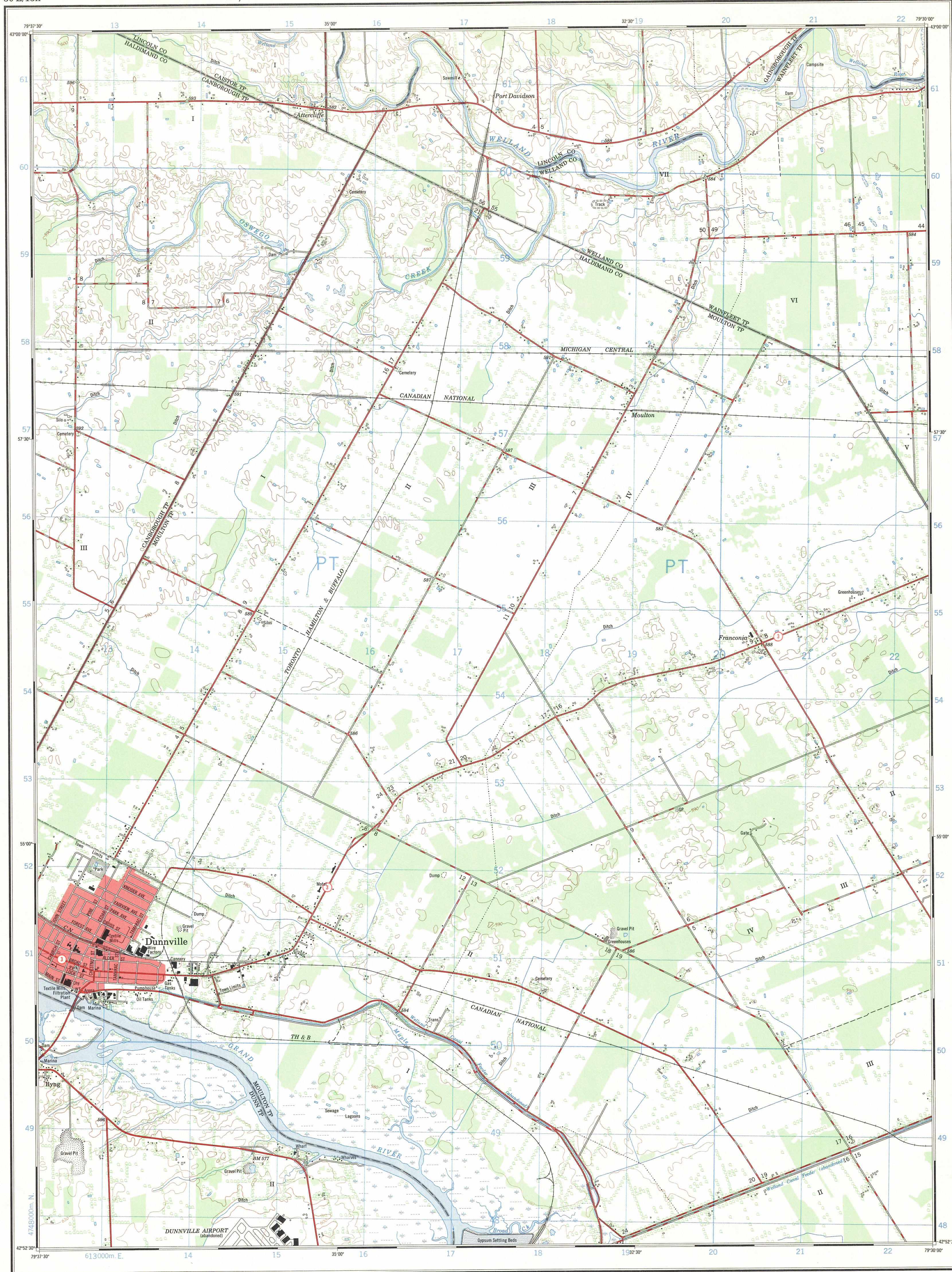
GRID ZONE DESIGNATION	100,000 M. SQUARE IDENTIFICATION
17 T	PT

EXAMPLE OF METHOD USED  
TO GIVE A REFERENCE TO NEAREST 100 METRES  
THE FOLLOWING GRID REFERENCE IS A SAMPLE ONLY  
AND DOES NOT REFER TO A POINT ON THIS MAP

99	98	97	96	95
98	97	96	95	94
97	96	95	94	93
96	95	94	93	92
95	94	93	92	91

REFERENCE POINT	CHURCH (as above)
EASTING. Read number on grid line immediately to left of point. Estimate tenths of a square from this line eastward to point.	97 97.5 97.75
NORTHING. Read number on grid line immediately below point. Estimate tenths of a square from this line northward to point.	98 98.25 98.5

EXAMPLE MILITARY GRID REFERENCE 975984  
Nearest similar grid reference 100,000 metres (about 62 miles)

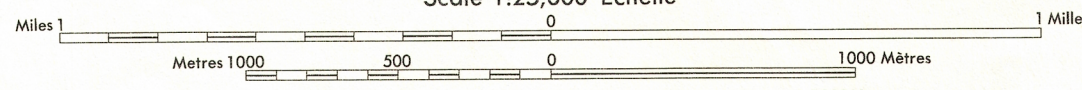


Produced by the SURVEYS and MAPPING BRANCH,  
DEPARTMENT OF ENERGY, MINES AND RESOURCES.  
Information depicted current as of 1965. Printed 1965.

Copies may be obtained from the Map Distribution Office,  
Department of Energy, Mines and Resources, Ottawa.

## DUNNVILLE ONTARIO

Scale 1:25,000 Échelle



Roads:	Routes:	Routes:
hard surface, all weather.....	pavée, toute saison.....	2 chaussées séparées.....
hard surface, all weather.....	pavée, toute saison.....	2 voies.....
loose or stabilized surface, all weather.....	gravier aggloméré, toute saison.....	2 voies.....
loose surface, dry weather.....	de gravier, période sèche.....	2 voies ou plus.....
cart track.....	de terre.....	2 voies ou plus.....
trail or portage.....	sentier ou portage.....	2 voies ou plus.....
Railway, normal gauge, single track.....	Chemin de fer, voie unique (écartement normal).....	2 voies.....
Horizontal control point, with elevation.....	Point géodésique, avec cote.....	2 voies.....
Bench mark, with elevation.....	Rapport de nivellement, avec cote.....	2 voies.....
Spot elevation, precise.....	Point coté précis.....	2 voies.....
Mine or open cut.....	Mine ou fosse à ciel ouvert.....	2 voies.....

CONTOUR INTERVAL 10 FEET  
Elevations in Feet above Mean Sea Level  
North American Datum 1927  
Transverse Mercator Projection

Some names on this map are not yet official.  
Corrections or additions are invited by the  
Survey and Mapping Branch.

ÉQUIDISTANCE DES COURBES 10 PIEDS  
Élevations en pieds au-dessus du niveau moyen de la mer  
Niveau de référence nord-américain 1927  
Projection transverse de Mercator

Certain names inscribed on this map are not  
yet official. La Direction des levés et  
de la cartographie s'avant-garde au public de lui  
signaler corrections et additions.

Building.....	Bâtiment.....	Church.....	Église.....
School.....	École.....	Post Office.....	Bureau de poste.....
Cemetery.....	Cimetière.....	Navigation Light.....	Feu de navigation.....
Rock, bare or awash.....	Roche, nue ou à fleur d'eau.....		
Power transmission line.....	Ligne de transport d'énergie.....		
River with bridge.....	Rivière avec pont.....		
Rapids, Falls, large, small.....	Rapides, Chutes, grands, petits.....		
Lake intermittent, indefinite.....	Lac intermittent, rive imprécise.....		
Marsh or Swamp.....	Marais ou marécage.....		
Depression contour.....	Courbes de cuvette.....		
Trees.....	Arbres.....		
Woods.....	Bois.....		
Vineyard, Orchard.....	Vignoble, Verger.....		

TABLEAU D'ASSEMBLAGE DU SYSTÈME NATIONAL  
DE RÉFÉRENCE CARTOGRAPHIQUE

79°45'00"	79°22'30"	43°07'30"
30 M/4b	30 M/4a	30 M/3d
30 L/13g	30 L/13h	30 L/14a
30 L/13b	30 L/13a	30 L/14b
79°45'00"	79°22'30"	42°45'00"

INDEX TO ADDING MAPS OF  
THE NATIONAL TOPOGRAPHIC SYSTEM

DUNNVILLE  
30 L/13h  
EDITION 1