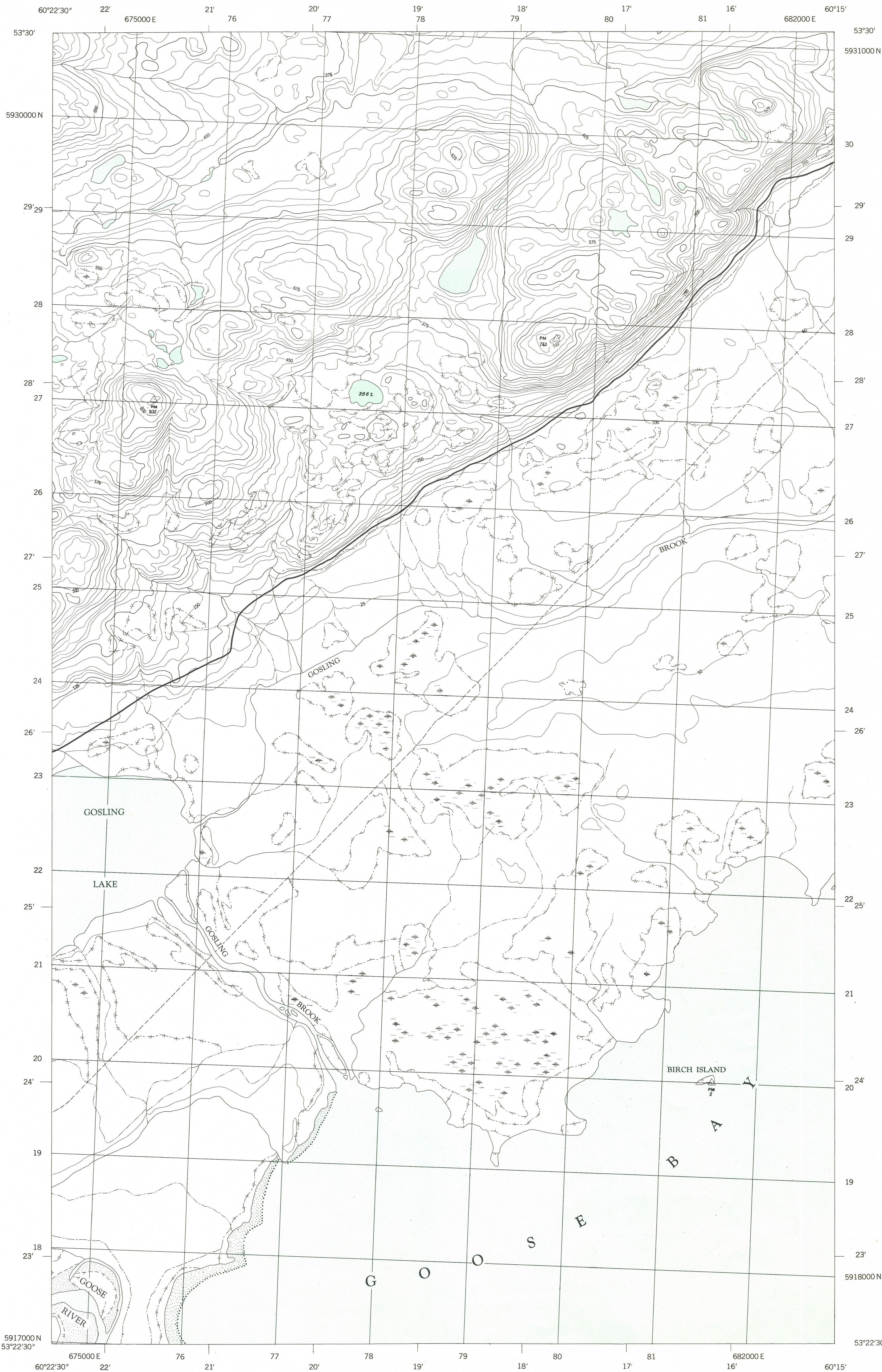


DEPARTMENT OF NATIONAL DEFENCE
ARMY SURVEY ESTABLISHMENT

First Edition

13F/8f

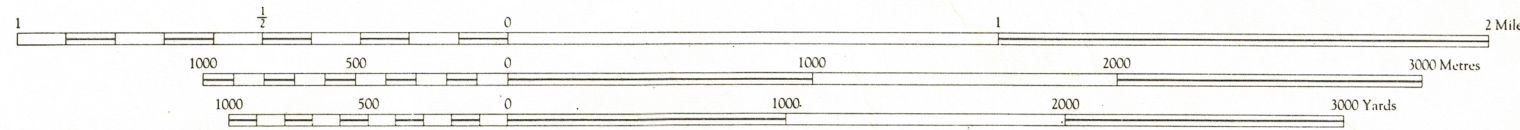


Produced by the Army Survey Establishment, R.C.E. 1957

GOSLING BROOK

NEWFOUNDLAND

Scale 1:25,000



CONTOUR INTERVAL 25 FEET

PROVISIONAL MAP

Subject To Correction

Users noting errors or omissions on this map are requested to mark hereon and forward to
Commanding Officer, Army Survey Establishment, Ottawa. Maps will be replaced if desired.

REFERENCE

Roads:	Boundary, International
hard surface, all weather	Province
hard surface, all weather	County or District
loose surface, all weather	Township or Parish
less than 2 lanes	City or Town
all weather	Railway, Indian, Military or
Cart Track, Trail	Power Transmission Line
Trail	Telephone or Telegraph, main route
normal gauge, multiple track	Horizontal Control Point
normal gauge, single track	Boundary Marker
abandoned, or under construction	Boundary Marker
Bridge, vehicular or overpass	Spot Elevation, (in feet)
Tunnel	Mine or Pit

REFERENCE

House, Building	Lighthouse
School	Wharf or Pier
Church	Foreshore Flats
Post Office	Swamp or Marsh
Tower, Radio Mast, Lookout, or	Lake or Pond, intermittent
Rocky Ledge	Glacier or Snowfield
Quarry	Stream, intermittent, indefinite
Sand or Gravel Pit	Irrigation Canals, Ditches
Cliff	Inundated Land, seasonal
Cutting	Contours, elevation
Embankment	Depression
Dry River Bed	Orchard
	Forest, unclassified, Scrub