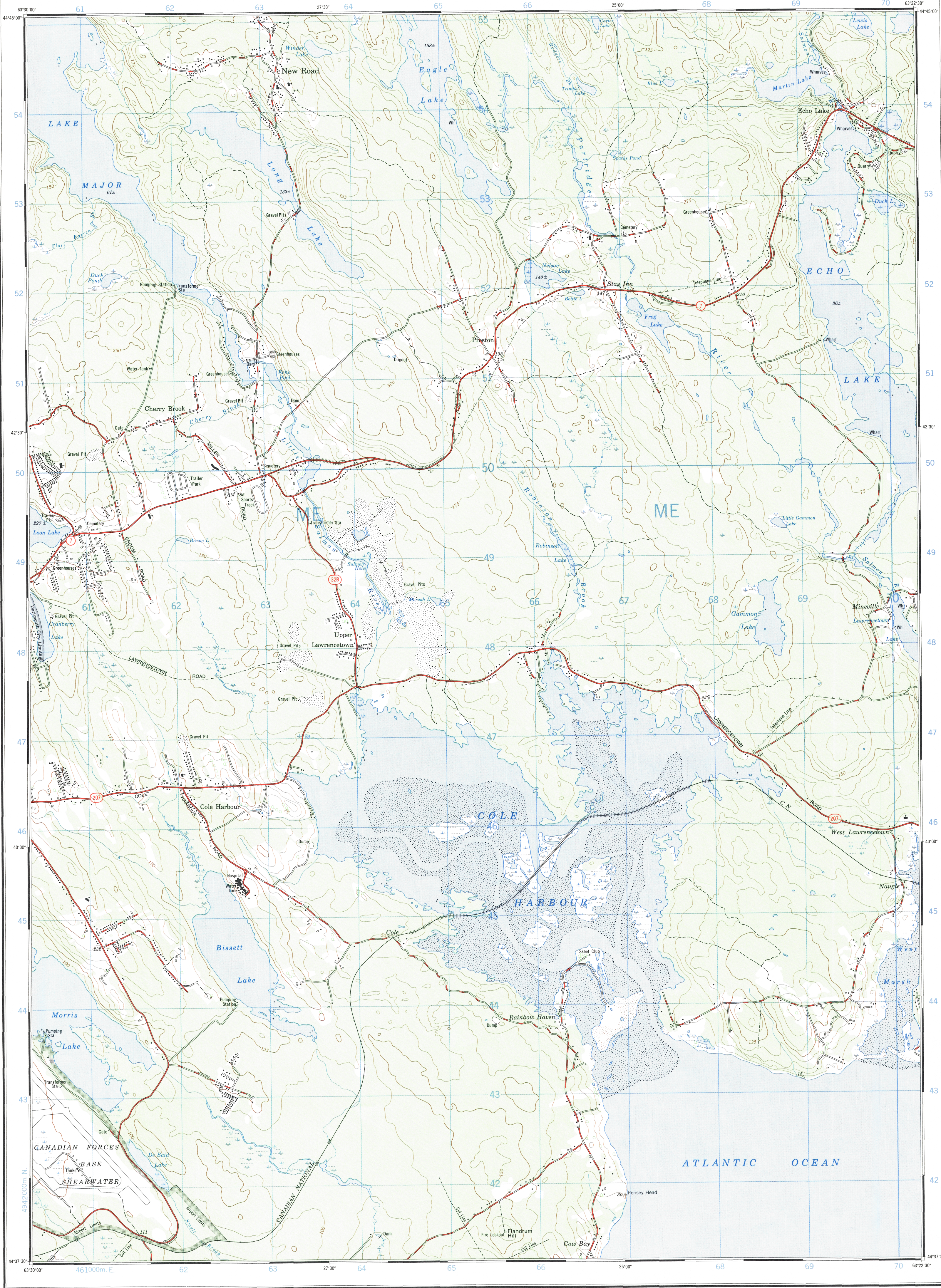
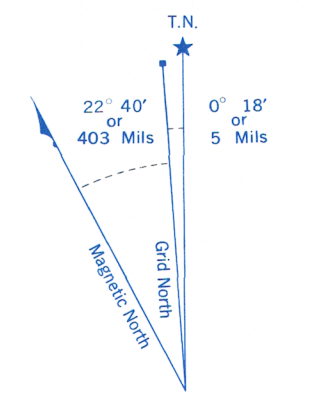


Refer to this map as:  
11D/11e  
EDITION 3 MCE  
SERIES A 891



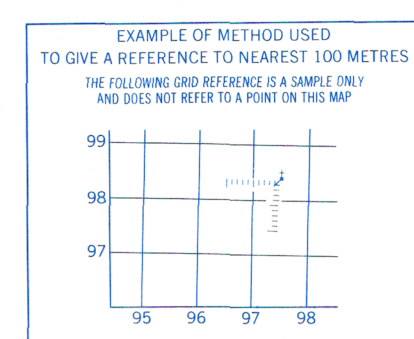
CONVERSION SCALE FOR ELEVATIONS  
Feet  
Meters



Use diagram only to obtain numerical values.  
APPROXIMATE MEAN DECLINATION 1969  
FOR CENTRE OF MAP  
Annual change decreasing 1.0"

ONE THOUSAND METRE  
UNIVERSAL TRANSVERSE MERCATOR GRID  
ZONE 20

GRID ZONE DESIGNATION	100,000 M. SQUARE IDENTIFICATION
20 T	ME



REFERENCE POINT	CHURCH (as above)
EASTING: Read number on grid line immediately to left of point Estimate tenths of a square from this line eastward to point	97 97.5
NORTHING: Read number on grid line immediately below point Estimate tenths of a square from this line northward to point	96 96.4

EXAMPLE MILITARY GRID REFERENCE 975984  
Nearest similar grid reference 100,000 metres (about 63 miles)

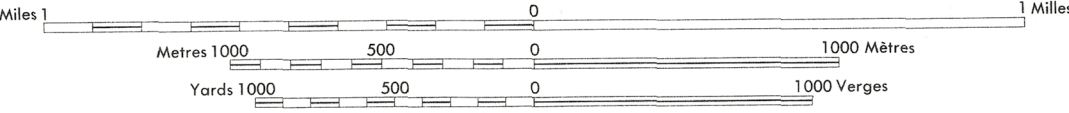
Produced by the SURVEYS AND MAPPING BRANCH,  
DEPARTMENT OF ENERGY, MINES AND RESOURCES.  
Updated from aerial photographs taken in 1968. Culture  
check 1969. Printed 1972.

Copies may be obtained from the Map Distribution Office,  
Department of Energy, Mines and Resources, Ottawa.

## COLE HARBOUR

HALIFAX COUNTY  
NOVA SCOTIA

Scale 1:25,000 Échelle



CONTOUR INTERVAL 25 FEET  
Elevations in Feet above Mean Sea Level  
North American Datum 1927  
Transverse Mercator Projection

EQUIDISTANCE DES COURBES 25 PIEDS  
Élévation en pieds au-dessus du niveau moyen de la mer  
Système de référence géodésique nord-américain, 1927  
Projection transverse de Mercator

Building.....	Bâtiment.....	Church.....	Église.....
School.....	École.....	Post Office.....	Bureau de poste.....
Cemetery.....	Cimetière.....	Navigation Light.....	Feu de navigation.....
Rock, bare or wash.....	Roche, nue ou à fleur d'eau.....		
Power transmission line.....	Ligne de transport d'énergie.....		
River with bridge.....	Rivière avec pont.....		
Rapids, Falls, large, small.....	Rapides, Chutes, grands, petits.....		
Lake intermittent, indefinite.....	Lac intermittent, rive imprécise.....		
Marsh or Swamp.....	Marais ou marécage.....		
Depression contours.....	Courbes de cuvette.....		
Trees.....	Arbres.....		
Woods.....	Bois.....		
Vineyard, Orchard.....	Vignoble, Verger.....		

TABLEAU D'ASSEMBLAGE DU SYSTÈME NATIONAL  
DE RÉFÉRENCE CARTOGRAPHIQUE

63°37'30"	63°15'00"
11 D/13a	11 D/14a
11 D/12h	11 D/11a
11 D/12a	11 D/11d

INDEX TO ADJOINING MAPS OF  
THE NATIONAL TOPOGRAPHIC SYSTEM

COLE HARBOUR  
11 D/11e  
EDITION 3