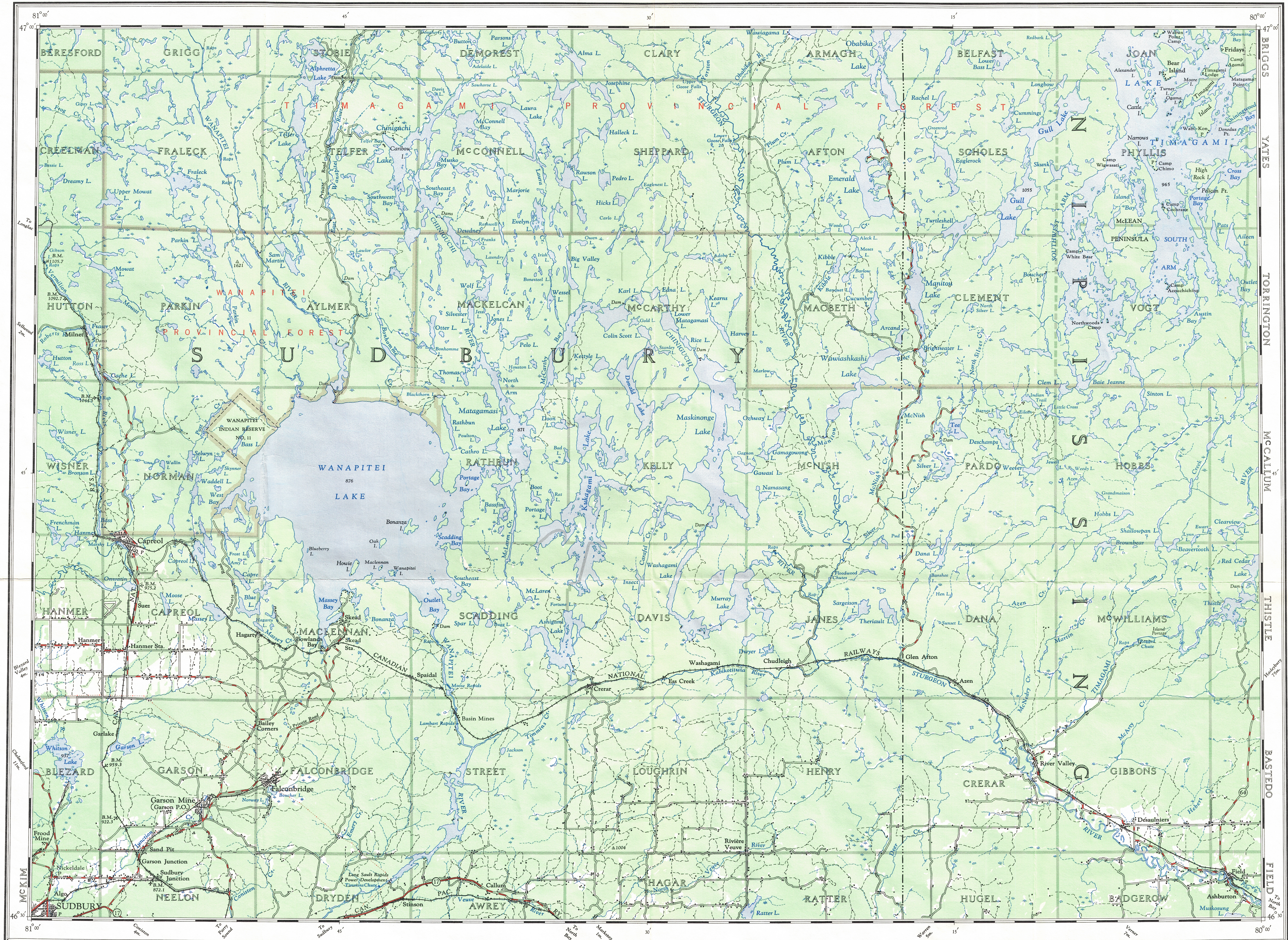


Ce document est le produit d'une numérisation par balayage de la publication originale.
This document was produced by scanning the original publication.



PRELIMINARY MAP

CAPREOL ONTARIO

Scale 1:126,720 or 2 Miles to 1 Inch

Miles 2 1 0 2 4 6 8 10 Miles

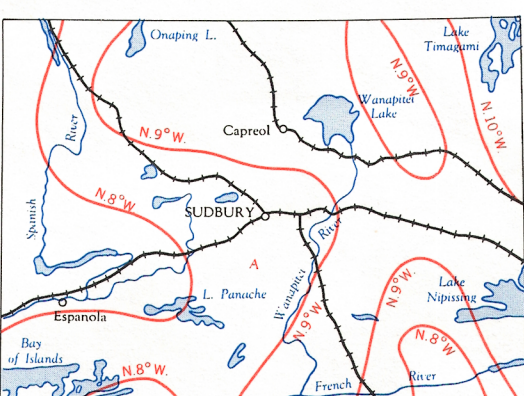
REFERENCE

Railway, Double Track
Single Track
Boundary, District or County
Township
Indian Reserve
Road, Hard Surface, Heavy Duty
Hard Surface, Heavy Duty
Hard Surface, Medium Duty
Loose Surface, Gravel and Driveway
Other Road
Trail

REFERENCE

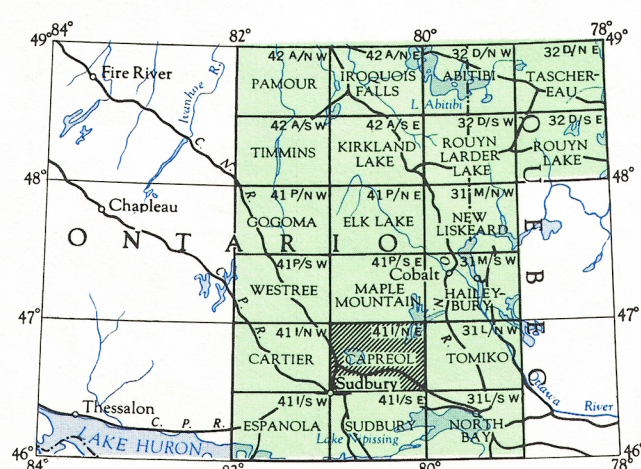
Electric Power Line
Railroad or Ferry
Swamp or Marsh
Dam
Building
Post Office
Minor or Open Cut
Spot Height (in Feet)
Beach Mark
Wooded Area

THE DECLINATION OF THE COMPASS NEEDLE, 1948



The declination of the compass needle at any place along a dotted line is the declination given on that dotted line. At other places the declination is between those given on the neighboring dotted lines; that is, at the place marked A, the declination is between N. 6° W. and 0° W. The yearly declinations of the compass needle are decreasing 5 minutes annually.

Drawn and Reproduced by the Army Survey Establishment, Department of National Defence. Compiled from information and aerial photographs taken in 1948 and supplied by the Department of Lands and Forests, Province of Ontario. Published 1950.



NOTE: On the above index the sheets published are shown in red.

Copies may be obtained from the Map Distribution Office, Department of Energy, Mines and Resources, Ottawa.

REPRINT
SEPT 8-71