

PROVISIONAL MAP

105 M/10

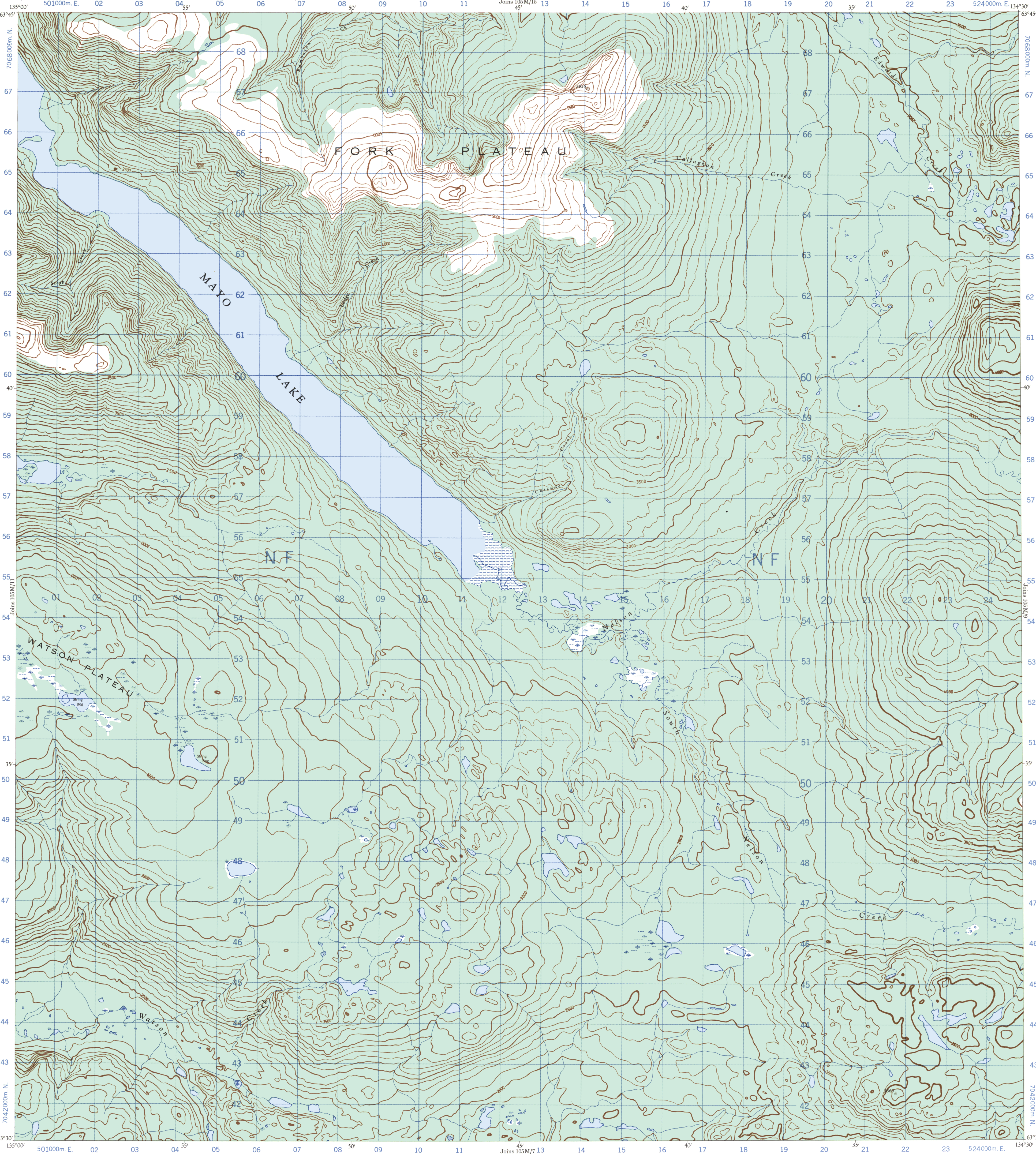
CANADA

(1984)

EDITION 1

CARTE PROVISOIRE

105 M/10

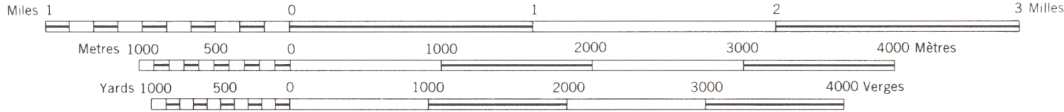


Produced, 1966, by the SURVEYS AND MAPPING BRANCH, DEPARTMENT OF ENERGY, MINES AND RESOURCES, from aerial photographs taken in 1949 and 1953. Field surveys 1949, 1961 and 1964. Printed 1968.

Copies may be obtained from the Map Distribution Office, Department of Energy, Mines and Resources, Ottawa.

SOUTH NELSON CREEK
YUKON TERRITORY

SCALE 1:50,000 ÉCHELLE



This map was compared with satellite imagery obtained in 1981 and found to be up-to-date in all major features.

CONTOUR INTERVAL 100 FEET
Elevations in Feet above Mean Sea Level
North American Datum 1927
Transverse Mercator Projection

Some names on this map are not yet official.
Corrections or additions are invited by the
Surveys and Mapping Branch.
This Provisional Map is equivalent to a standard
map in accuracy of content.

On a comparé cette carte aux images prises par satellite en 1981; nous avons constaté que toutes ses caractéristiques principales étaient à jour.

ÉQUIDISTANCE DES COURBES: 100 PIEDS
Élévations en pieds au dessus du niveau moyen de la mer
Niveau de référence nord-américain 1927
Projection Transverse de Mercator

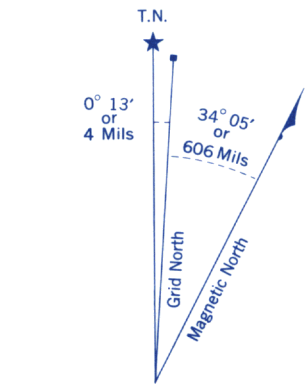
Certains noms inscrits sur cette carte ne sont pas encore officiels. La Direction des levés et de la cartographie saura au public de lui signaler corrections et additions.

Cette carte provisoire est l'équivalente d'une carte régulière au point de vue précision de l'information.

Établie en 1966, par la DIRECTION DES LEVÉS ET DE LA CARTOGRAPHIE, MINISTÈRE DE L'ÉNERGIE, DES MINES ET DES RESSOURCES, d'après des photographies aériennes prises en 1949 et 1953. Levé sur le terrain en 1949, 1961 et 1964. Imprimée en 1968.

Ces cartes sont en vente au Bureau de distribution des cartes, ministère de l'Énergie, des Mines et des Ressources, Ottawa.

Refer to this map as: 105 M / 10 EDITION 1 ASE SERIES A 722



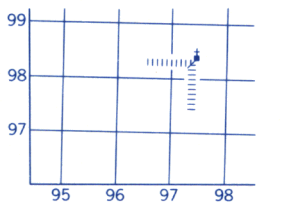
Use diagram only to obtain numerical values.
APPROXIMATE MEAN DECLINATION 1965
FOR CENTRE OF MAP
Annual change decreasing 4.5"

ONE THOUSAND METRE
UNIVERSAL TRANSVERSE MERCATOR GRID

GRID ZONE DESIGNATION	100,000 M. SQUARE IDENTIFICATION
8V	NF
5	

EXAMPLE OF METHOD USED
TO GIVE A REFERENCE TO NEAREST 100 METRES

THE FOLLOWING GRID REFERENCE IS A SAMPLE ONLY
AND DOES NOT REFER TO A POINT ON THIS MAP



REFERENCE POINT	CHURCH	(as above)
EASTING: Road number on grid line immediately to left of point Estimate tenths of a square from this line eastward to point	97 5	975
NORTHING: Road number on grid line immediately below point Estimate tenths of a square from this line northward to point	98 4	984

EXAMPLE MILITARY GRID REFERENCE 975984
Nearest similar grid reference 100,000 metres (about 63 miles)

ZONE 8

105 M/10
(1984) EDITION 1