

Dominion of Canada.
MAP SHEWING
MOUNTED POLICE STATIONS & PATROLS

THROUGHOUT THE
NORTH-WEST TERRITORIES,
 DURING THE YEAR 1888

ALSO BOUNDARIES OF INDIAN TREATIES AND LOCATION OF INDIAN RESERVES.
 Published by authority of
 THE RIGHT HON. SIR JOHN A. MACDONALD, G.C.B.

SCALE OF STATUTE MILES

REFERENCES:

Mounted Police Stations

Do. Patrols (in white lines)

Telegraph Lines in operation

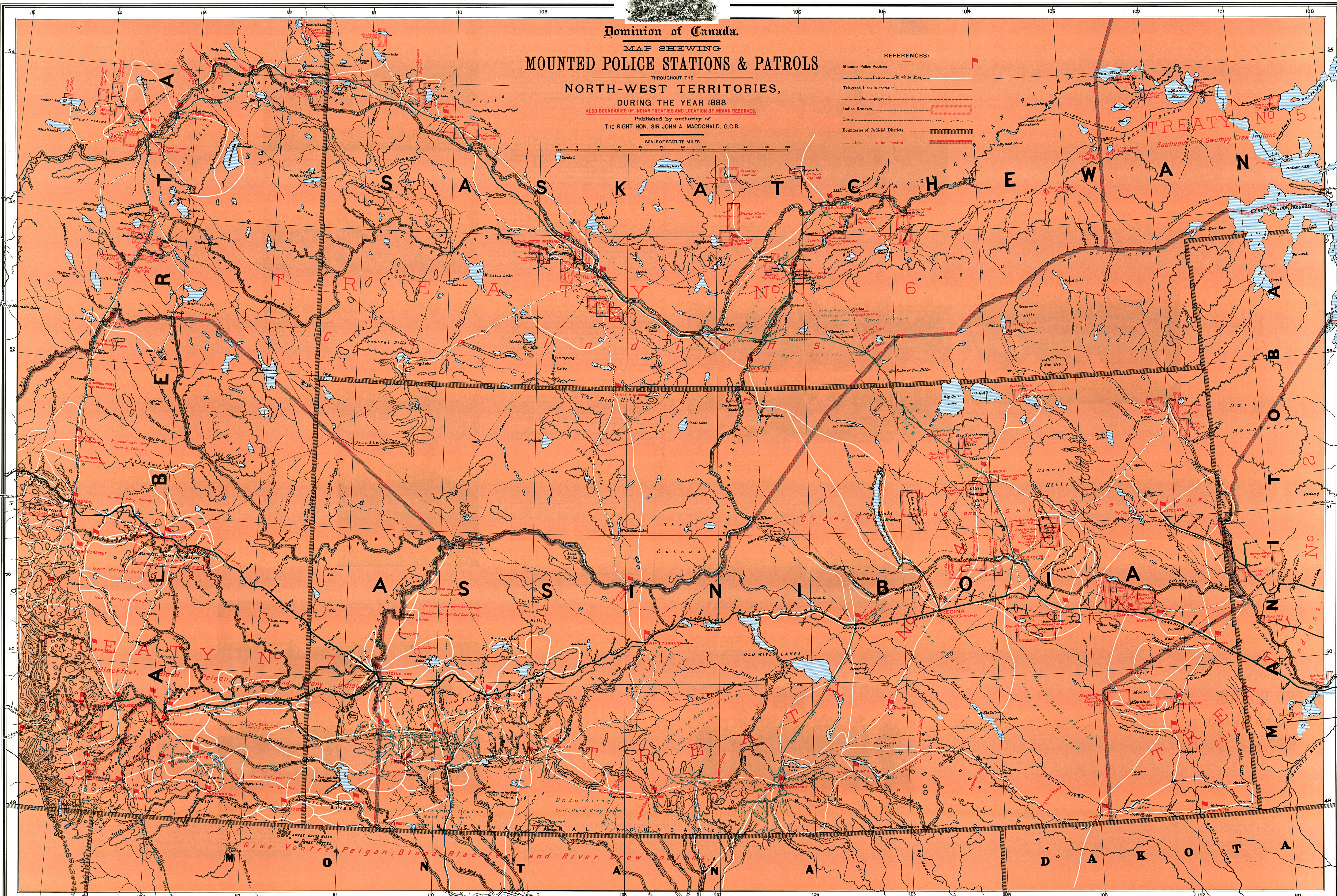
Do. projected

Indian Reserves

Trails

Boundaries of Judicial Districts

Do. Indian Treaties



Reproduced from original (1888), by the SURVEY AND MAPPING BRANCH, DEPARTMENT OF ENERGY, MINES AND RESOURCES

This replica of the 1888 map is published to commemorate the One Hundredth Anniversary of the founding of the North-West Mounted Police on August 20, 1873 and to salute the long and distinguished record of service to Canada by this Force and its present descendants, the Royal Canadian Mounted Police. It was surveyed in 1873 by the North American Boundary Commission, which marked the line by a row of

Lithographed by ROLPH McALEY LIMITED, Toronto, Ontario