

CANADA

POPULATION DISTRIBUTION 1976

Produced by the Geographical Services Division, Surveys and Mapping Branch, Energy, Mines and Resources Canada. Printed 1985.

Copies of this map may be obtained from the Canada Map Office, Energy, Mines and Resources Canada, Ottawa, or your nearest map dealer. Quote MCR 4046.
 Des exemplaires de cette carte sont disponibles en français. Précédés MCR 4046F.

Scale 1:7 500 000 or 1 centimetre represents 75 kilometres
 0 75 150 225 300 375 450 kilometres
 Lambert Conformal Conic Projection, Standard Parallels 49°N and 77°N
 Modified Pseudo-Cylindrical Projection, North of Latitude 80°

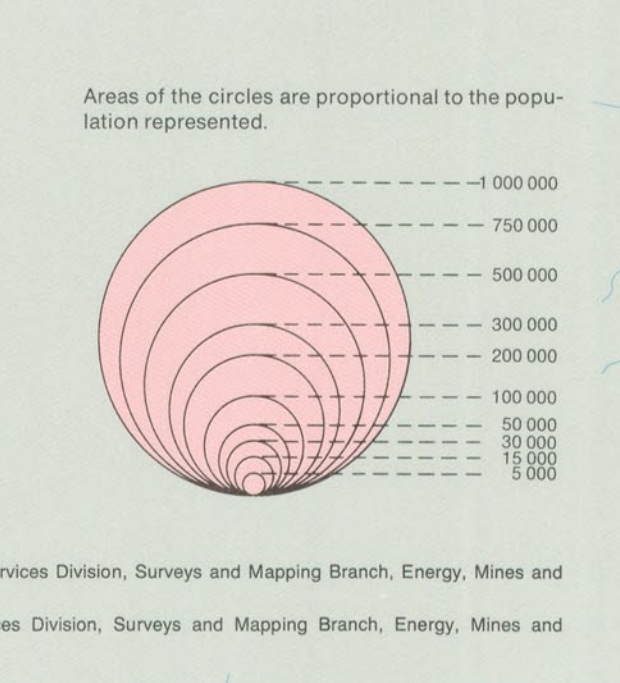


POPULATION DISTRIBUTION 1976

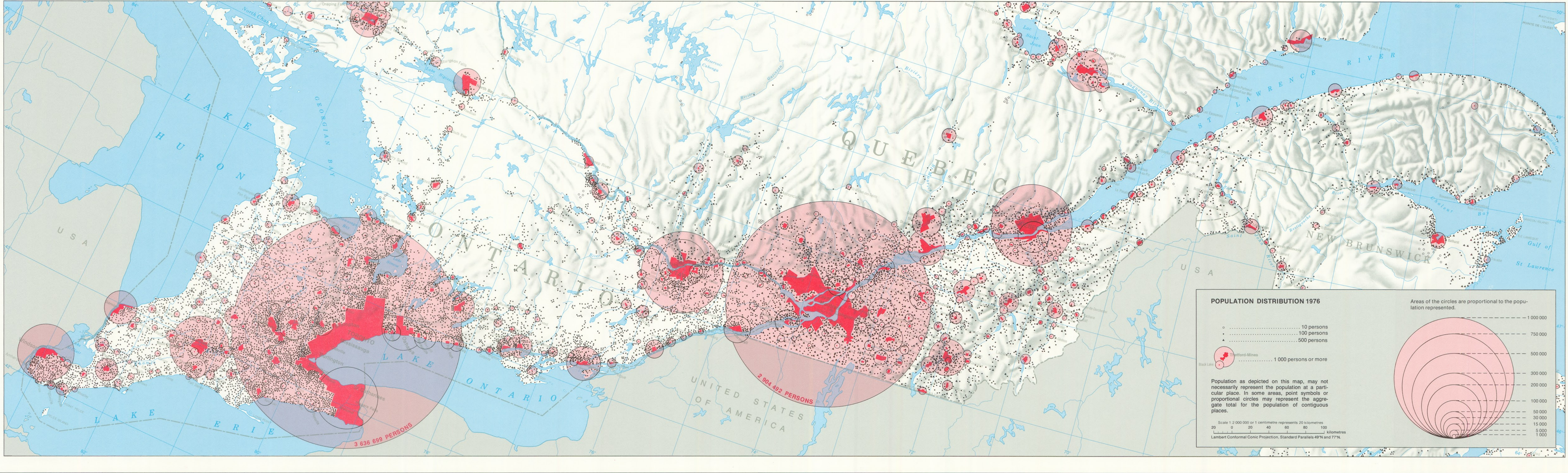
- 10 persons
- 100 persons
- 500 persons
- 1 000 persons
- 2 500 persons
- 5 000 persons or more
- Isolated Settlements

Population as depicted on this map, may not necessarily represent the population at a particular place. In some areas, point symbols or proportional circles may represent the aggregate total for the population of contiguous places.

Research by C.-P. Rivet, Geographical Research, Geographical Services Division, Surveys and Mapping Branch, Energy, Mines and Resources Canada.
 Cartography by Cartography and Toponymy, Geographical Services Division, Surveys and Mapping Branch, Energy, Mines and Resources Canada.



SOURCES
 Canada, Statistics Canada, 1976 Census of Canada, Population Geographic Distribution / Recensement du Canada en 1976, Population Répartition géographique, Catalogue 92-623-01-01, Ottawa.
 1976 Census of Canada, Population by enumeration area, Computer printout, Ottawa.



POPULATION DISTRIBUTION 1976

- 10 persons
- 100 persons
- 500 persons
- 1 000 persons or more
- Isolated Settlements

Population as depicted on this map, may not necessarily represent the population at a particular place. In some areas, point symbols or proportional circles may represent the aggregate total for the population of contiguous places.

Scale 1:2 000 000 or 1 centimetre represents 20 kilometres
 0 10 20 30 40 50 60 70 80 90 100 kilometres
 Lambert Conformal Conic Projection, Standard Parallels 49°N and 77°N

