

CANADA

INDIAN AND INUIT POPULATION DISTRIBUTION

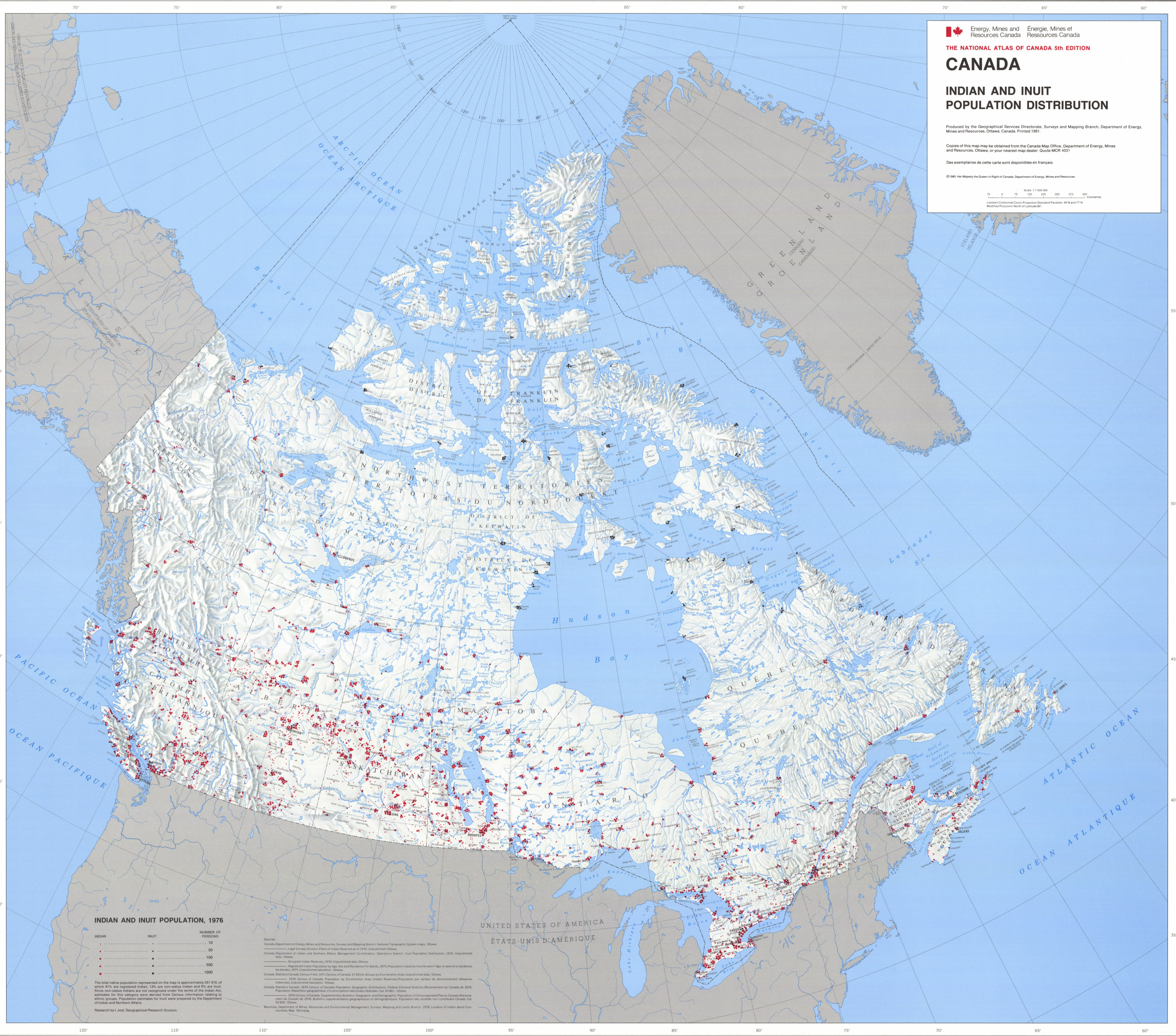
Produced by the Geographical Services Directorate, Surveys and Mapping Branch, Department of Energy, Mines and Resources, Ottawa, Canada. Printed 1981.

Copies of this map may be obtained from the Canada Map Office, Department of Energy, Mines and Resources, Ottawa, or your nearest map dealer. Quote MCR 4031

Des exemplaires de cette carte sont disponibles en français.

©1980 Her Majesty the Queen in Right of Canada, Department of Energy, Mines and Resources.

Scale 1:7 500 000
 75 0 75 150 225 300 375 450 Kilometres
 Lambert Conformal Conic Projection Standard Parallels 49°N and 77°N
 Modified Polyconic North of Latitude 80°



INDIAN AND INUIT POPULATION, 1976

INDIAN	INUIT	NUMBER OF PERSONS
●	●	10
●	●	50
●	●	100
●	●	500
●	●	1000

The total native population represented on the map is approximately 351 010, of which 81% are registered Indian, 13% are non-status Indian and 6% are Inuit. Since non-status Indians are not recognized under the terms of the Indian Act, estimates for this category were derived from Census information relating to ethnic groups. Population estimates for Inuit were prepared by the Department of Indian and Northern Affairs.

Sources:
 Canada, Department of Energy, Mines and Resources, Surveys and Mapping Branch, National Topographic System maps, Ottawa.
 Canada, Department of Indian and Northern Affairs, Management Co-ordination, Operations Branch, Inuit Population Distribution, 1976, Unpublished data, Ottawa.
 Canada, Statistics Canada, Census Field, 1971 Census of Canada, 51 Ethnic Groups by Enumeration Area, Unpublished data, Ottawa.
 Canada, Statistics Canada, 1976 Census of Canada, Population Geographic Distributions, Federal Electoral Districts, Recensement du Canada de 1976, Population Répartition Géographique, Circonscriptions Électorales Fédérales, Cat. 92-801, Ottawa.
 Canada, Statistics Canada, 1976 Census of Canada, Supplementary Bulletin, Geographic and Demographic Population of Incorporated Places Canada/Recensement du Canada de 1976, Bulletin Supplémentaire Géographique et Démographique, Population des localités non constituées Canada, Cat. 92-800, Ottawa.
 Manitoba, Department of Mines, Resources and Environmental Management, Surveys, Mapping and Lands Branch, 1976, Location of Indian Band Communities, Map, Winnipeg.

Research by J. Jost, Geographical Research Division.