

CANADA

NORTH CIRCUMPOLAR REGION

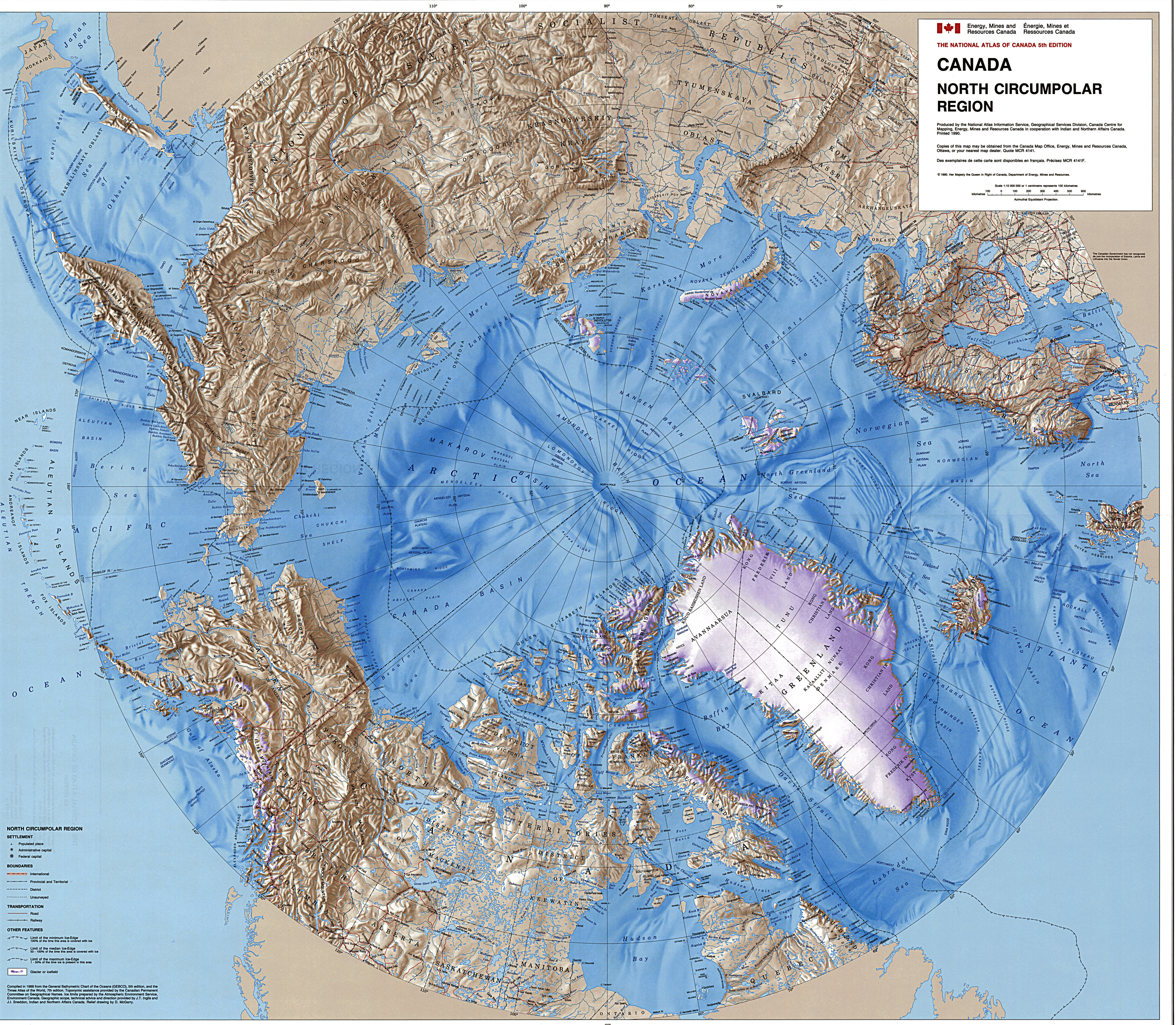
Produced by the National Atlas Information Service, Geographical Services Division, Canada Centre for Mapping, Energy, Mines and Resources Canada in cooperation with Indian and Northern Affairs Canada. Printed 1990.

Copies of this map may be obtained from the Canada Map Office, Energy, Mines and Resources Canada, Ottawa, or your nearest map dealer. Quote MCR 4141.

Des exemplaires de cette carte sont disponibles en français. Précisez MCR 4141F.

© 1990. Her Majesty the Queen in Right of Canada, Department of Energy, Mines and Resources.

Scale 1:10 000 000 or 1 centimetre represents 100 kilometres
 100 0 100 200 300 400 500 600 Kilometres
 100 0 100 200 300 400 500 600 Miles
 Anamorphic Equivalent Projection



NORTH CIRCUMPOLAR REGION

SETTLEMENT

- Populated place
- Administrative capital
- Federal capital

BOUNDARIES

- International
- Provincial and Territorial
- District
- Unsurveyed

TRANSPORTATION

- Road
- Railway

OTHER FEATURES

- Limit of the minimum ice-edge
100% of the time this area is covered with ice
- Limit of the median ice-edge
50-100% of the time this area is covered with ice
- Limit of the maximum ice-edge
1-50% of the time ice is present in this area
- Glacier or icefield

Compiled in 1988 from the General Bathymetric Chart of the Oceans (GEBCO), 5th edition, and the Times Atlas of the World, 7th edition. Topographic assistance provided by the Canadian Permanent Committee on Geographical Names. Ice limits prepared by the Atmospheric Environment Service, Environment Canada. Geographic scope, technical advice and direction provided by J.T. Inglis and J.L. Swenson, Indian and Northern Affairs Canada. Relief drawing by D. McElroy.