

CANADA

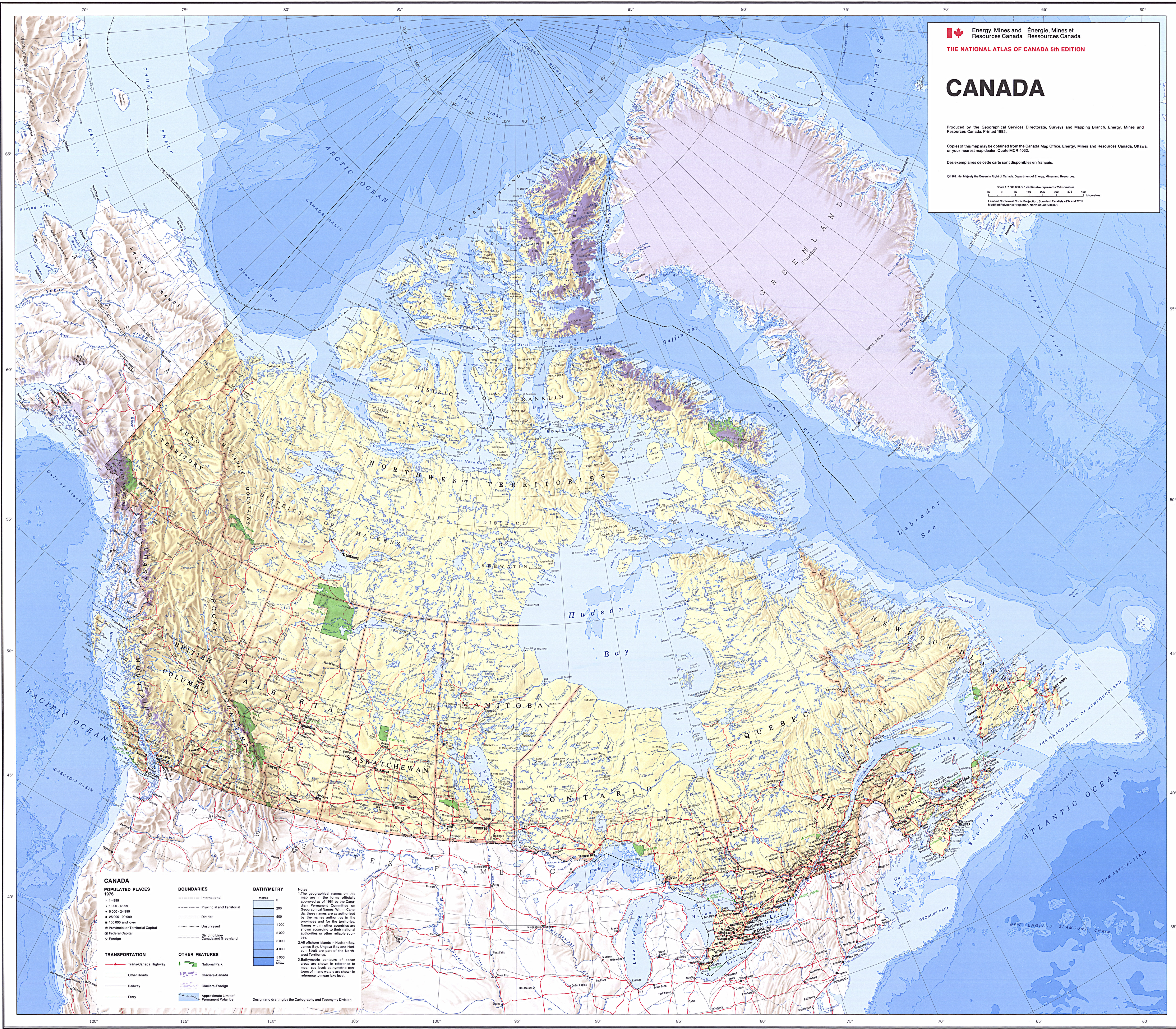
Produced by the Geographical Services Directorate, Surveys and Mapping Branch, Energy, Mines and Resources Canada. Printed 1982.

Copies of this map may be obtained from the Canada Map Office, Energy, Mines and Resources Canada, Ottawa, or your nearest map dealer. Quote MCR 4032.

Des exemplaires de cette carte sont disponibles en français.

©1982 Her Majesty the Queen in Right of Canada. Department of Energy, Mines and Resources.

Scale 1:7 500 000 or 1 centimetre represents 75 kilometres
 75 0 75 150 225 300 375 450 Kilometres
 Lambert Conformal Conic Projection, Standard Parallels 49°N and 77°N,
 Modified Polyconic Projection, North of Latitude 80°.



CANADA

POPULATED PLACES 1976

- 1-999
- 1 000-4 999
- 5 000-24 999
- 25 000-99 999
- 100 000 and over
- Provincial or Territorial Capital
- Federal Capital
- Foreign

TRANSPORTATION

- Trans-Canada Highway
- Other Roads
- Railway
- Ferry

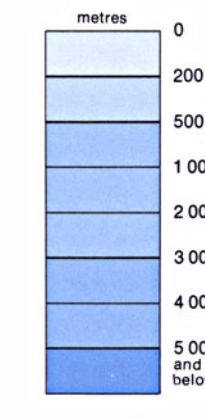
BOUNDARIES

- International
- Provincial and Territorial
- District
- Unsurveyed
- Dividing Line: Canada and Greenland

OTHER FEATURES

- National Park
- Glaciers-Canada
- Glaciers-Foreign
- Approximate Limit of Permanent Polar Ice

BATHYMETRY



Notes
 1. The geographical names on this map are in the forms officially approved as of 1981 by the Canadian Parliament Committee on Geographical Names Within Canada. These names are as authorized by the names authorities in the provinces and for the territories. Names within other countries are shown according to their national authorities or other reliable sources.
 2. All offshore islands in Hudson Bay, James Bay, Ungava Bay and Hudson Strait are part of the Northwest Territories.
 3. Bathymetric contours of ocean areas are shown in reference to mean sea level; bathymetric contours of inland waters are shown in reference to mean lake level.

Design and drafting by the Cartography and Toponymy Division.