

CANADA SAWMILLS

Produced by the National Atlas Information Service, Geographical Services Division, Canada Centre for Mapping, Energy, Mines and Resources Canada. Printed 1992.

Copies of this map may be obtained from the Canada Map Office, Energy, Mines and Resources Canada, Ottawa, or your nearest map dealer. Quote MCR 4111.

Cette carte est aussi publiée en français. Demander le numéro MCR 4111F.

© 1992. Her Majesty the Queen in Right of Canada, Department of Energy, Mines and Resources.

Scale 1:7 500 000 or 1 centimetre represents 75 kilometres
 75 0 75 150 225 300 375 450 Kilometres
 Lambert Conformal Conic Projection, Standard Parallels at 49°N and 77°N; Modified Polyconic Projection, North of Latitude 80°

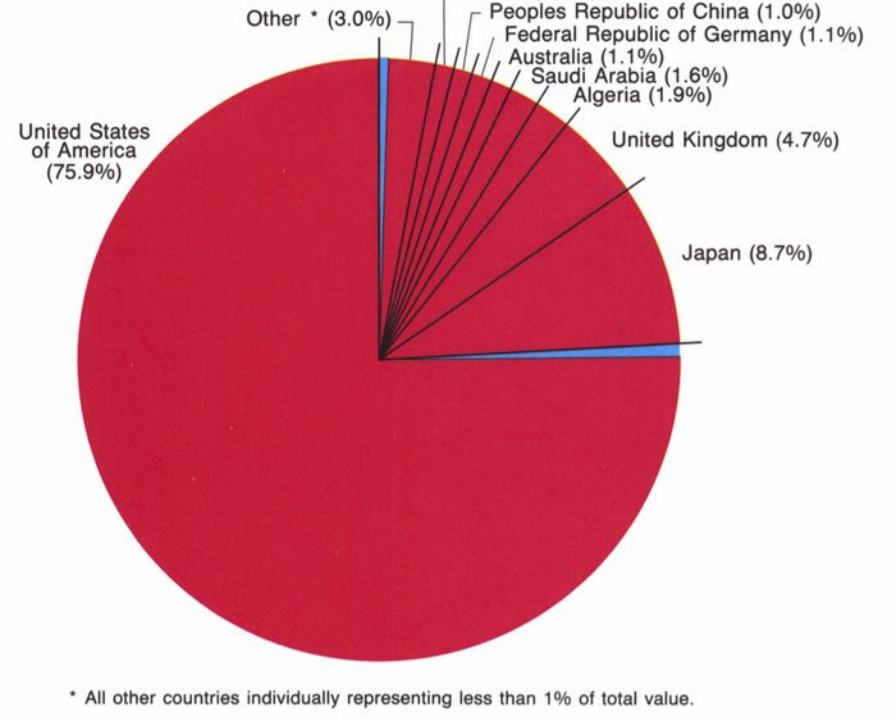
NOTES

- For the purposes of this map, sawmills include all sawmills and combined sawmill/planning mills operating in 1983 with annual lumber production totaling 11 800 cubic metres (5 million fbm) or more. Independent planing mills and shingle and shake mills have not been included.
- Sawmill Lumber production** is the estimated total production of lumber for 1983. Estimates assume normal operating conditions throughout the year, and in some cases are based on production per shift(s) and the average number of operating days during 1983.
- Sawmill products** include softwood and hardwood lumber. Softwood lumber is the principal product and is milled in standard dimensions and grades in accordance with the Canadian Lumber Standards. Hardwood lumber, which is of lesser importance in terms of volume, is produced in random dimensions and various grades, usually in accordance with the National Hardwood Lumber Association grading rules. In general, production figures used for this map do not include other sawmill products such as railway ties and large dimension timbers, fencing, pallets and industrial stock, as well as a large selection of manufactured products such as moulding, siding, panelling, flooring, etc. By-products of the sawmilling process such as wood chips, shavings, sawdust and bark also account for an important part of the sawmill revenue.
- Wood type** indicates principal tree type(s) processed at a particular mill. "Hardwood" and "softwood" are terms used in the forest industry to classify trees. Hardwood trees have broad leaves and are commonly referred to as deciduous. The main hardwood species groups used by the wood processing industries (based on 1983 shipments) were birch, poplar, maple, oak, basswood, beech and ash. Softwood trees are cone-bearing, with needle-like leaves, and are commonly referred to as coniferous. The main softwood species groups processed in 1983 were spruce, hemlock, pine, Douglas-fir, cedar and fir. The term "mixed" refers to both softwood and hardwood species.
- The identification of **sawmill ownership** (at least 50% controlling interest) is limited to the ten largest forest product companies in Canada, ranked according to dollar value of total forest product sales in 1983. This list has also been included on one other 5th edition National Atlas of Canada map sheet entitled CANADA—PULP AND PAPER MILLS to provide an indication of integration within Canada's forest products industry.
- Forest areas of commercial significance** are based on the Provisional Forest Map of Canada (Canadian Forestry Service 1979) and include those areas of forest land which are of prime significance for harvesting areas to the forest products industry. The area referred to as "forest" represents, for the most part, continuous forest which can be defined as being either productive or potentially productive, although not all of this forest is accessible or suitable for industrial use. "Forest with agricultural and cleared lands" refers primarily to those areas of discontinuous productive or potentially productive forest where much of the land has been cleared for other uses.

Research by P.J. Lloyd and J.L. Ellsworth, Geographical Services Division, Canada Centre for Mapping, Energy, Mines and Resources Canada. Cartography by the Geographical Services Division, Canada Centre for Mapping, Energy, Mines and Resources Canada. Digital technologies were used in part for the production and publication of this map.

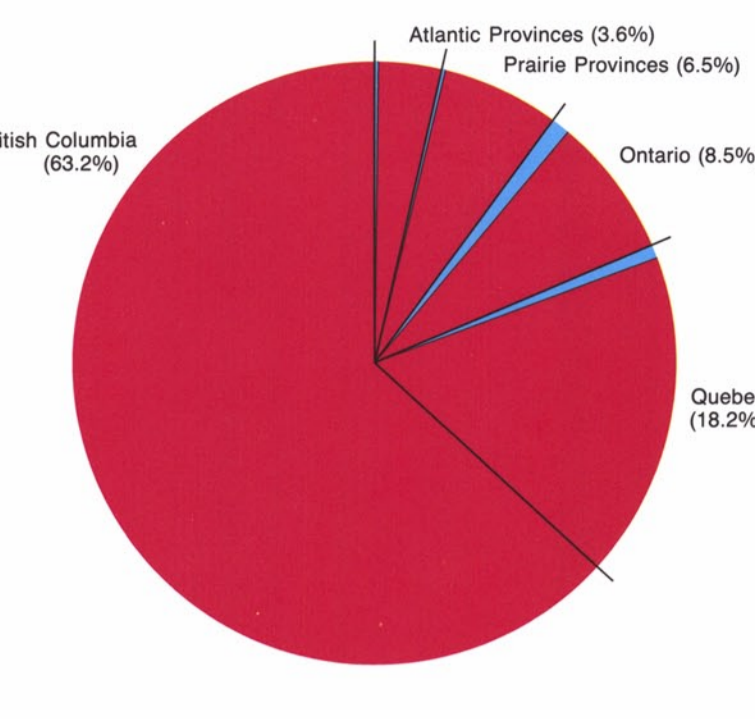
DESTINATIONS OF CANADIAN EXPORTS OF LUMBER

Percentage of total national value of lumber exports, 1983 (83 969 074 000)

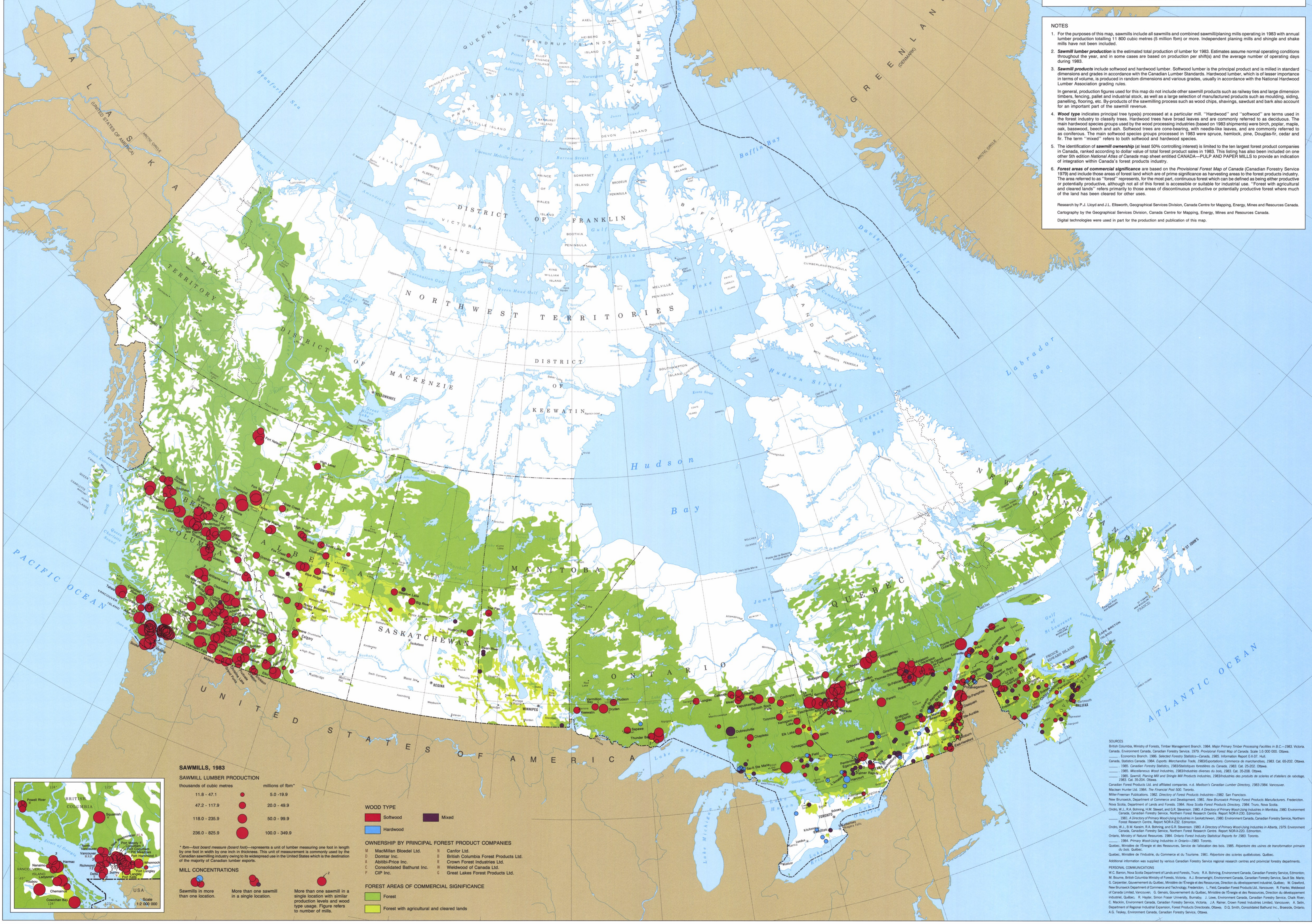


CANADIAN LUMBER PRODUCTION BY REGION

Percentage of total national lumber production, 1983 (48 666 000 m³ / 114 851 760 fbm)

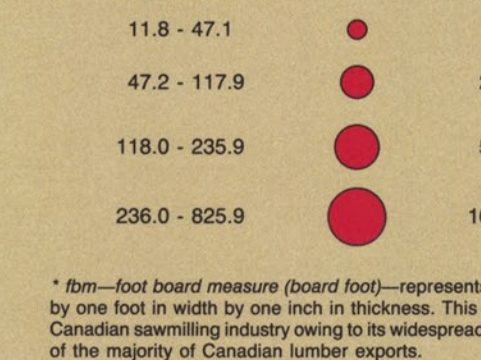


Softwood Lumber (Red) Hardwood Lumber (Blue)

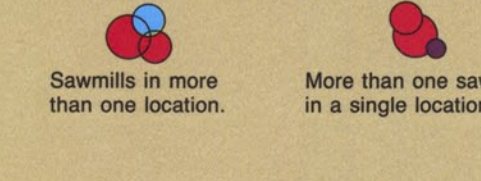


SAWMILLS, 1983

SAWMILL LUMBER PRODUCTION



MILL CONCENTRATIONS



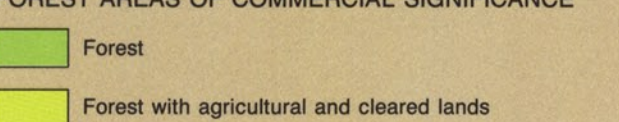
WOOD TYPE



OWNERSHIP BY PRINCIPAL FOREST PRODUCT COMPANIES



FOREST AREAS OF COMMERCIAL SIGNIFICANCE



SOURCES

British Columbia, Ministry of Forests, Timber Management Branch, 1984 *Major Primary Timber Processing Facilities in B.C.—1983*. Victoria, Canada, Environment Canada, Canadian Forestry Service, 1979 *Provisional Forest Map of Canada*. Scale 1:5 000 000. Ottawa.

— Economic Branch, 1986 *Selected Forestry Statistics—Canada, 1985*. Information Report E-X/37. Hull.

— Canada, Statistics Canada, 1984 *Exports, Merchandise Trade, 1983*. Exportation: Commerce de marchandises, 1983. Cat. 65-202. Ottawa.

— 1985 *Canadian Forestry Statistics, 1983*. Statistiques forestières du Canada, 1983. Cat. 25-202. Ottawa.

— 1985 *Manufacturing Wood Industries, 1983*. Industries forestières du bois, 1983. Cat. 35-206. Ottawa.

— 1985 *Sawmill, Planing Mill and Single Mill Products Industries, 1983*. Industries des produits de scienciers et d'ateliers de rabotage, 1983. Cat. 35-204. Ottawa.

Canadian Forest Products Ltd. and affiliated companies, n.d. *Medison's Canadian Lumber Directory, 1983/1984*. Vancouver.

Maclean Hunter Ltd. 1984. *The Forestry Year 84/85*. Toronto.

Miller Freeman Publications, 1982. *Directory of Forest Products Industries—1982*. San Francisco.

New Brunswick, Department of Commerce and Development, 1983. *New Brunswick Primary Forest Products Manufacturers*. Fredericton.

New Scotia, Department of Lands and Forests, 1984. *New Scotia Forest Products Directory, 1984*. Toronto, New Scotia.

Oudin, J., R. A. Bohning, H.M. Stewart, and G.R. Stevenson, 1980. *A Directory of Primary Wood Using Industries in Manitoba, 1980*. Environment Canada, Canadian Forestry Service, Northern Forest Research Centre, Report NOR-X/235. Edmonton.

— 1981. *A Directory of Primary Wood Using Industries in Saskatchewan, 1980*. Environment Canada, Canadian Forestry Service, Northern Forest Research Centre, Report NOR-X/232. Edmonton.

Oudin, J., B. W. Keenan, R.A. Bohning, and G.R. Stevenson, 1980. *A Directory of Primary Wood Using Industries in Alberta, 1979*. Environment Canada, Canadian Forestry Service, Northern Forest Research Centre, Report NOR-X/233. Edmonton.

— 1984. *Primary Wood Using Industries in Ontario—1982*. Toronto.

Ontario, Ministry of Natural Resources, 1984. *Ontario Forest Industry Statistical Reports for 1983*. Toronto.

— 1984. *Primary Wood Using Industries in Ontario—1982*. Toronto.

Quebec, Ministère de l'Énergie et des Ressources, Service de l'allocation des bois, 1985. *Appareils des usines de transformation primaire du bois*. Québec.

— Ministère de l'Industrie, du Commerce et du Tourisme, 1981. *Appareils des usines forestières québécoises*. Québec.

Additional information was supplied by various Canadian Forestry Service regional centres and provincial forestry departments.

PERSONAL COMMUNICATIONS

M.C. Banno, New Scotia Department of Lands and Forests, Toronto. R.A. Bohning, Environment Canada, Canadian Forestry Service, Edmonton.

M. Bourne, British Columbia Ministry of Forests, Victoria. A.J. Brownrigg, Environment Canada, Canadian Forestry Service, Salt Lake, Utah.

G. Carpenter, Gouvernement du Québec, Ministère de l'Énergie et des Ressources, Direction du développement québécois, Québec. W. Crawford, New Brunswick Department of Commerce and Technology, Fredericton. L. Field, Canadian Forest Products Ltd., Vancouver. R. Forest, Westwood of Canada Limited, Vancouver. D. Gervais, Gouvernement du Québec, Ministère de l'Énergie et des Ressources, Direction du développement québécois, Québec. R. Hagner, Simon Fraser University, Burnaby. J. Lee, Environment Canada, Canadian Forestry Service, Chisholm.

C. Maclean, Environment Canada, Canadian Forestry Service, Ottawa. J.A. Reiner, Crown Forest Industries Limited, Vancouver. A. Selby, Department of Regional Industries Expansion, Forest Products Directorate, Ottawa. G.D. Smith, Consolidated Bathurst Inc., Brantford, Ontario. A.G. Teakley, Environment Canada, Canadian Forestry Service, Ottawa.