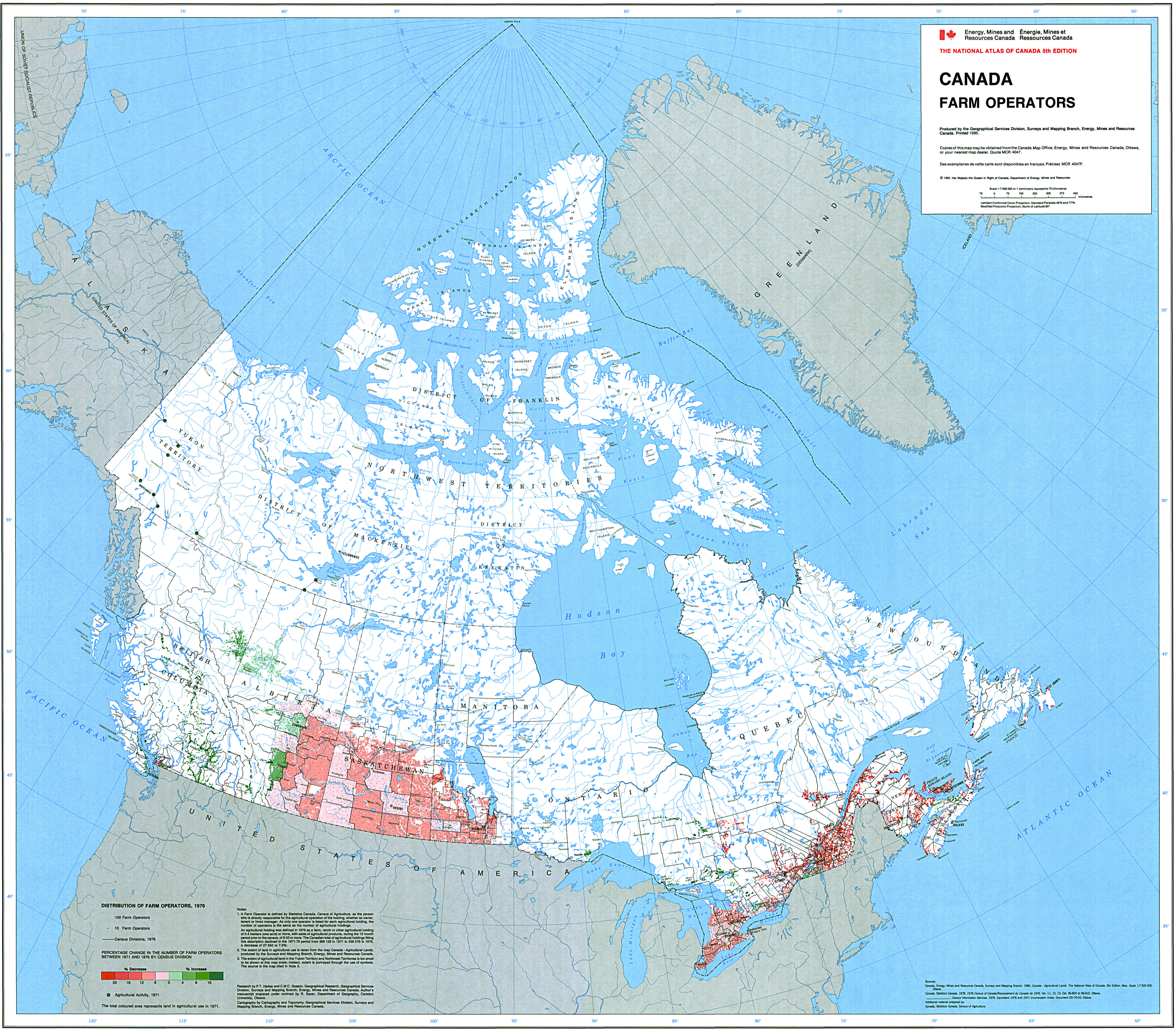

Energy, Mines and Resources Canada / **Énergie, Mines et Ressources Canada**
THE NATIONAL ATLAS OF CANADA 5th EDITION
CANADA
FARM OPERATORS
 Produced by the Geographical Services Division, Surveys and Mapping Branch, Energy, Mines and Resources Canada. Printed 1985.
 Copies of this map may be obtained from the Canada Map Office, Energy, Mines and Resources Canada, Ottawa, or your nearest map dealer. Quote MCR 4047.
 Des exemplaires de cette carte sont disponibles en français. Précisez MCR 4047F.
 © 1985. Her Majesty the Queen in Right of Canada, Department of Energy, Mines and Resources.
 Scale 1:7 500 000 or 1 centimetre represents 75 kilometres
 75 0 75 150 225 300 375 450 Kilometres
 Lambert Conformal Conic Projection, Standard Parallels 49°N and 77°N; Modified Polyconic Projection, North of Latitude 80°



DISTRIBUTION OF FARM OPERATORS, 1976

- 100 Farm Operators
- 10 Farm Operators
- 1 Farm Operator

PERCENTAGE CHANGE IN THE NUMBER OF FARM OPERATORS BETWEEN 1971 AND 1976 BY CENSUS DIVISION

% Decrease	% Increase
30	10
20	8
12	6
6	4
0	2
	10

● Agricultural Activity, 1971
 The total coloured area represents land in agricultural use in 1971.

Notes:
 1. A Farm Operator is defined by Statistics Canada, Census of Agriculture, as the person who is directly responsible for the agricultural operation of the holding, whether as owner, tenant or hired manager. As only one operator is listed for each agricultural holding, the number of operators is the same as the number of agricultural holdings.
 An agricultural holding was defined in 1976 as a farm, ranch or other agricultural holding of 0.4 hectares (one acre) or more, with sales of agricultural products, during the 12 month period prior to the census, of \$ 8 000 or more. The Canadian total of agricultural holdings fitting this description declined in the 1971-76 period from 366 128 in 1971 to 338 578 in 1976, a decrease of 27 550 or 7.5%.
 2. The extent of land in agricultural use is taken from the map Canada - Agricultural Lands, produced by the Surveys and Mapping Branch, Energy, Mines and Resources Canada.
 3. The extent of agricultural land in the Yukon Territory and Northwest Territories is too small to be shown at this map scale; instead, extent is portrayed through the use of symbols. The source is the map cited in Note 2.

Research by P.T. Harker and C.M.C. Gosson, Geographical Research, Geographical Services Division, Surveys and Mapping Branch, Energy, Mines and Resources Canada. Author's manuscript prepared under contract by R. Sayer, Department of Geography, Carleton University, Ottawa.
 Cartography by Cartography and Toponymy, Geographical Services Division, Surveys and Mapping Branch, Energy, Mines and Resources Canada.

Sources:
 Canada, Energy, Mines and Resources Canada, Surveys and Mapping Branch, 1980. Canada - Agricultural Lands. The National Atlas of Canada, 5th Edition. Map. Scale 1:7 500 000. Ottawa.
 Canada, Statistics Canada, 1978. 25% Census of Canada/Recensement du Canada de 1976, Vol. 11, 12, 13. Cat. 96-800 to 96-830. Ottawa.
 Canada, Statistics Canada, 1979. Equipment 1978 and 1977 Enumeration Areas. Document 90-74-03. Ottawa.
 Additional material prepared by:
 Canada, Statistics Canada, Census of Agriculture.