

CANADA PUBLIC FISH HATCHERIES

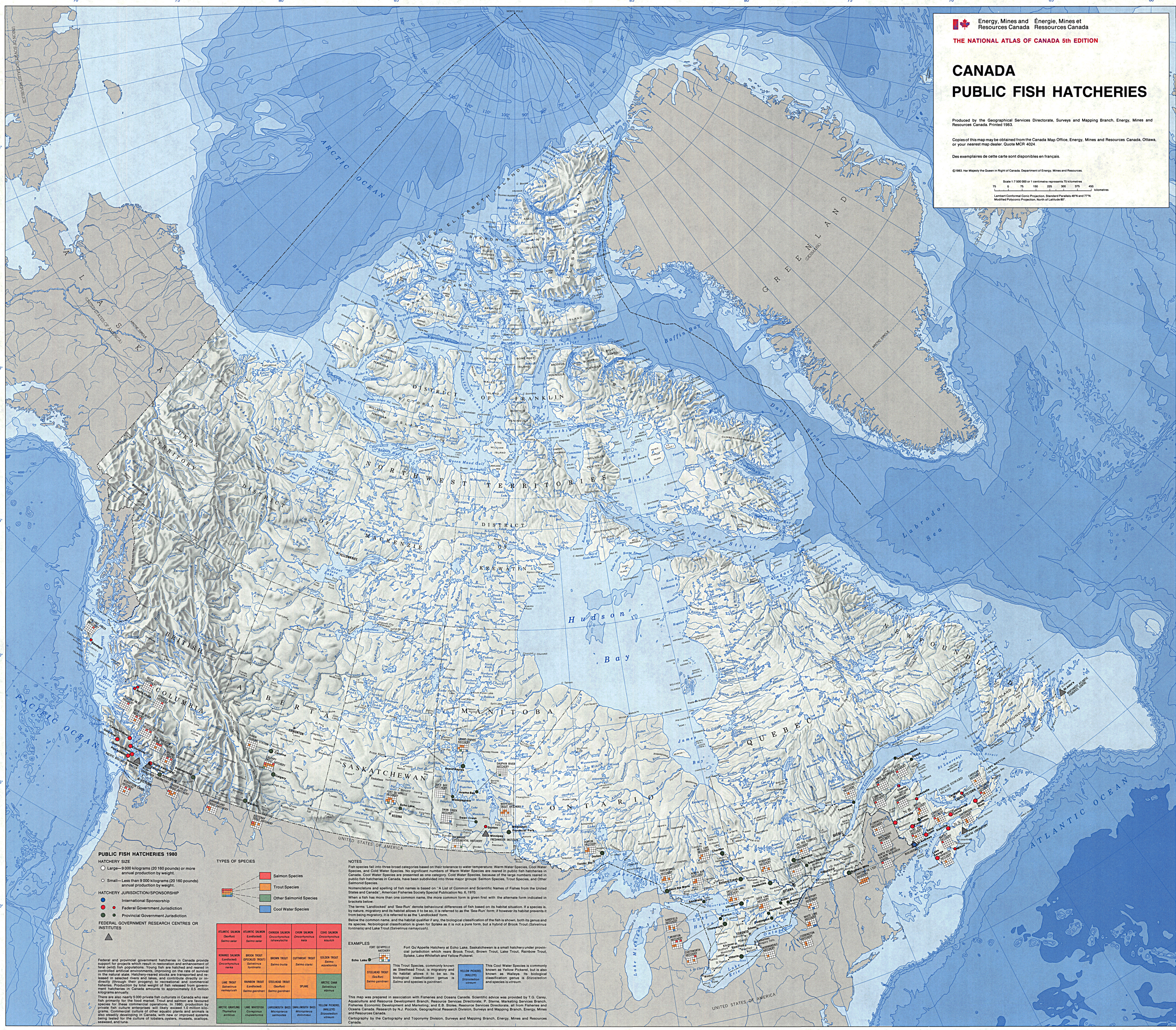
Produced by the Geographical Services Directorate, Surveys and Mapping Branch, Energy, Mines and Resources Canada. Printed 1983.

Copies of this map may be obtained from the Canada Map Office, Energy, Mines and Resources Canada, Ottawa, or your nearest map dealer. Quote MCR 4024.

Des exemplaires de cette carte sont disponibles en français.

©1983 Her Majesty the Queen in Right of Canada, Department of Energy, Mines and Resources.

Scale 1:7 500 000 or 1 centimetre represents 75 kilometres
 0 75 150 225 300 375 450 kilometres
 Lambert Conformal Conic Projection, Standard Parallels 49°N and 77°N
 Modified Polyconic Projection, North of Latitude 60°



PUBLIC FISH HATCHERIES 1980

- HATCHERY SIZE**
- Large—9 000 kilograms (20 160 pounds) or more annual production by weight.
 - Small—Less than 9 000 kilograms (20 160 pounds) annual production by weight.
- HATCHERY JURISDICTION/SPONSORSHIP**
- International Sponsorship
 - Federal Government Jurisdiction
 - Provincial Government Jurisdiction
- FEDERAL GOVERNMENT RESEARCH CENTRES OR INSTITUTES**
- ▲

TYPES OF SPECIES

- Salmon Species
- Trout Species
- Other Salmonid Species
- Cool Water Species

ATLANTIC SALMON (Sea Run) <i>Salmo salar</i>	ATLANTIC SALMON Landlocked <i>Salmo salar</i>	CHOOK SALMON <i>Oncorhynchus tshawytscha</i>	CHUK SALMON <i>Oncorhynchus nerca</i>	COHO SALMON <i>Oncorhynchus kisutch</i>
KISUMUK SALMON <i>Oncorhynchus nerca</i>	BROWN TROUT <i>Salmo trutta</i>	BROWN TROUT <i>Salmo trutta</i>	OUTERMOUNT TROUT <i>Salmo clarki</i>	COLEEN TROUT <i>Salmo equisetorum</i>
LAKE TROUT <i>Salvelinus namaycush</i>	RANBOW TROUT <i>Salmo gairdneri</i>	STEELEHEAD TROUT <i>Salmo gairdneri</i>	SPLENE <i>Salvelinus alpinus</i>	ARCTIC OMA <i>Salvelinus alpinus</i>
ARCTIC GRAYLING <i>Thymallus arcticus</i>	LAKE WHITEFISH <i>Coregonus clupeaformis</i>	ARGENTON BASS <i>Micropogonias undulatus</i>	MALLINOW BASS <i>Micropogonias undulatus</i>	YELLOW PERCH <i>Perca flavescens</i>

NOTES

Fish species fall into three broad categories based on their tolerance to water temperature: Warm Water Species, Cool Water Species, and Cold Water Species. No significant numbers of Warm Water Species are reared in public fish hatcheries in Canada. Cool Water Species are presented as one category, Cold Water Species, because of the large numbers reared in public fish hatcheries in Canada. They have been subdivided into three major groups: Salmon Species, Trout Species, and Other Salmonid Species. Nomenclature and spelling of fish names is based on "A List of Common and Scientific Names of Fishes from the United States and Canada," American Fisheries Society Special Publication No. 6, 1970. When a fish has more than one common name, the more common form is given first with the alternate form indicated in brackets below. The terms "Landlocked" and "Sea-Run" denote behavioural differences of fish based on their habitat situation. If a species is, by nature, migratory and its habitat allows it to be so, it is referred to as the "Sea-Run" form. If however its habitat prevents it from being migratory, it is referred to as the "Landlocked" form. Below the common name, and the habitat qualifier if any, the biological classification of the fish is shown, both its genus and its species. No botanical classification is given for Speake as it is not a pure form, but a hybrid of Brook Trout (*Salvelinus fontinalis*) and Lake Trout (*Salvelinus namaycush*).

EXAMPLES

Fort Qu'Appelle Hatchery at Echo Lake, Saskatchewan is a small hatchery under provincial jurisdiction which rears Brook Trout, Brown Trout, Lake Trout, Rainbow Trout, Squaw, Lake Whitefish and Yellow Perch.

Steelehead Trout (Sea Run) *Salmo gairdneri*
 This Trout Species, commonly known as Steelhead Trout, is migratory and its habitat allows it to be so. Its biological classification genus is *Salmo* and species is *gairdneri*.

Yellow Perch (Walle) *Perca flavescens*
 This Cool Water Species is commonly known as Yellow Perch, but is also known as Walle. Its biological classification genus is *Perca* and species is *flavescens*.

This map was prepared in association with Fisheries and Oceans Canada. Scientific advice was provided by T.G. Carey, Aquaculture and Resource Development Branch, Resource Services Directorate, P. Starnes, Marketing Services Branch, Fisheries, Economic Development and Marketing, and E.B. Stove, Resource Services Directorate, all from Fisheries and Oceans Canada. Cartography by A.J. Pocock, Geographical Services Directorate, Surveys and Mapping Branch, Energy, Mines and Resources Canada.