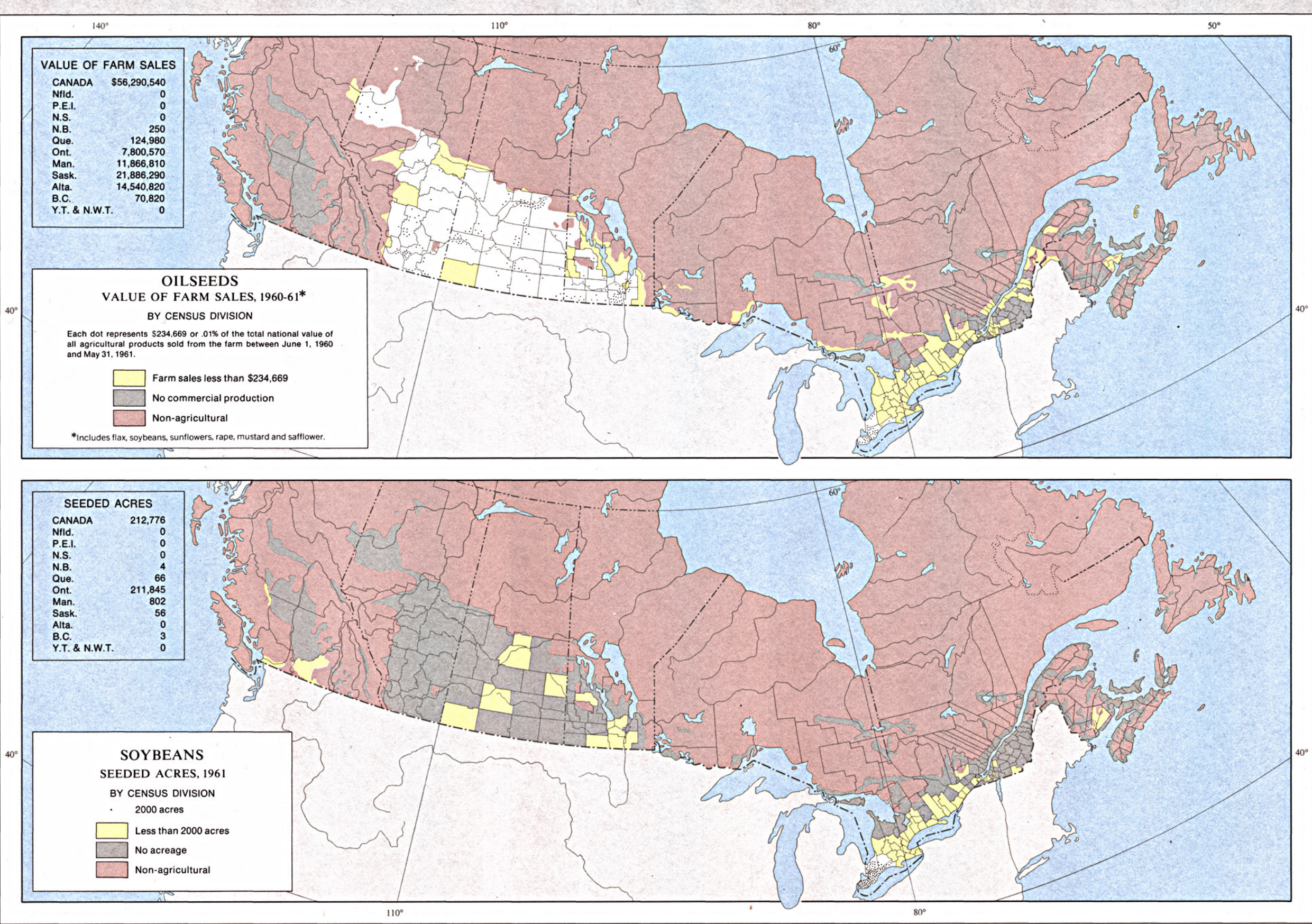


Lambert Conformal Conic Projection Standard Parallels 49°N. and 77°N. Scale 1:20,000,000 or One Inch to 315.65 Miles. THE NATIONAL ATLAS OF CANADA.



Lambert Conformal Conic Projection Standard Parallels 49°N. and 77°N. Scale 1:20,000,000 or One Inch to 315.65 Miles. THE NATIONAL ATLAS OF CANADA.