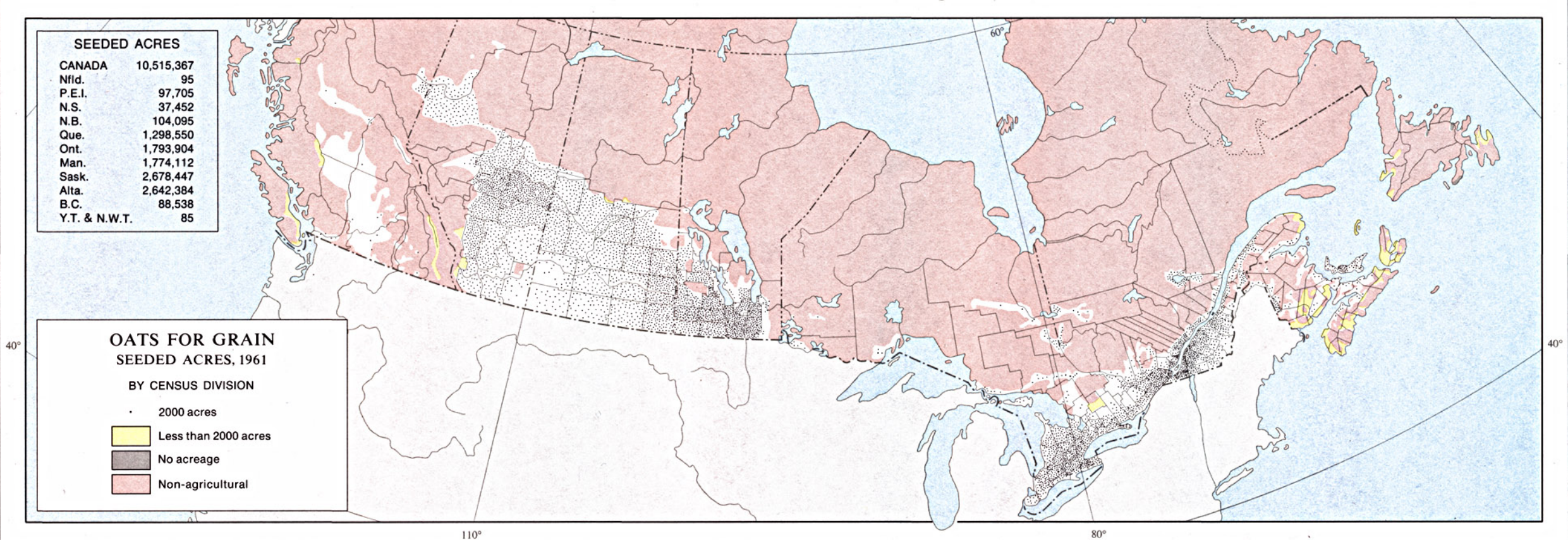
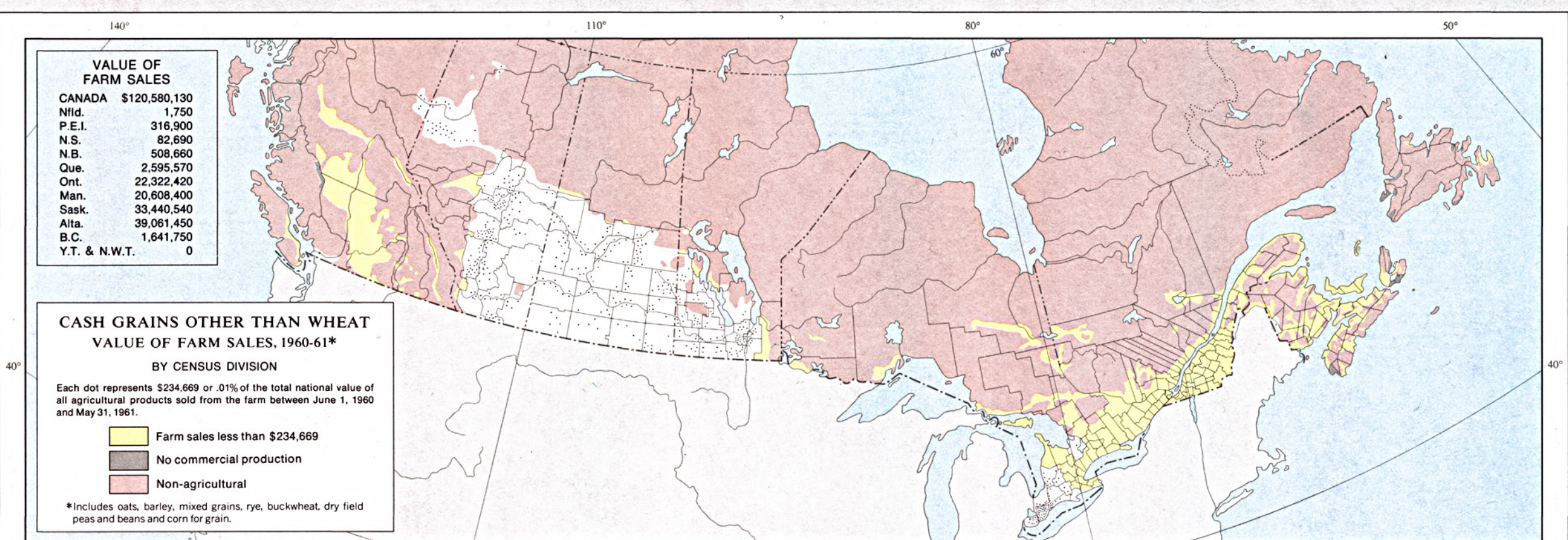


Lambert Conformal Conic Projection Standard Parallels 49°N. and 77°N.  
THE NATIONAL ATLAS OF CANADA

Scale 1:20,000,000 or One Inch to 315.65 Miles  
200 0 200 400 Miles  
200 0 200 400 600 Kilometres



Lambert Conformal Conic Projection Standard Parallels 49°N. and 77°N.  
THE NATIONAL ATLAS OF CANADA

Scale 1:20,000,000 or One Inch to 315.65 Miles  
200 0 200 400 Miles  
200 0 200 400 600 Kilometres