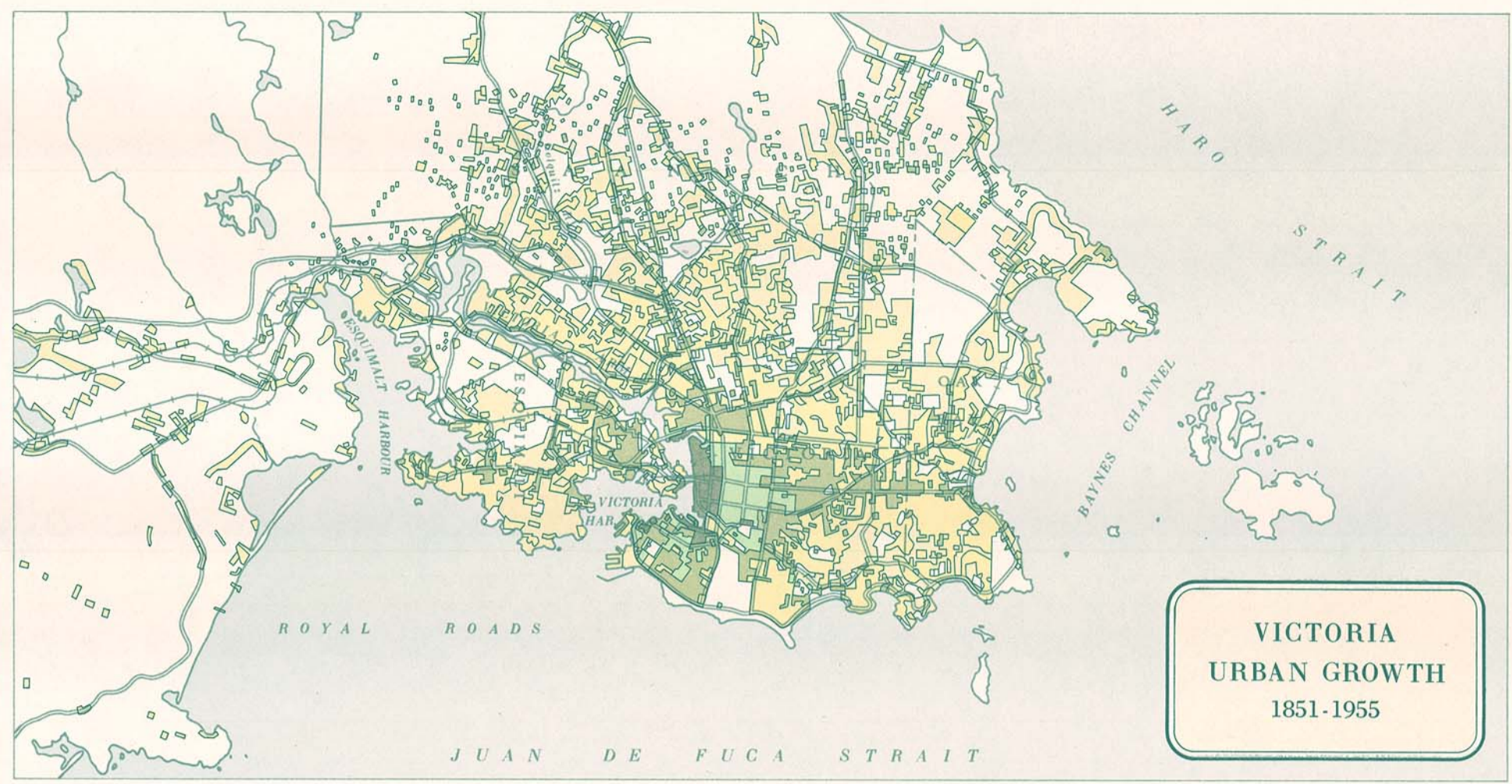


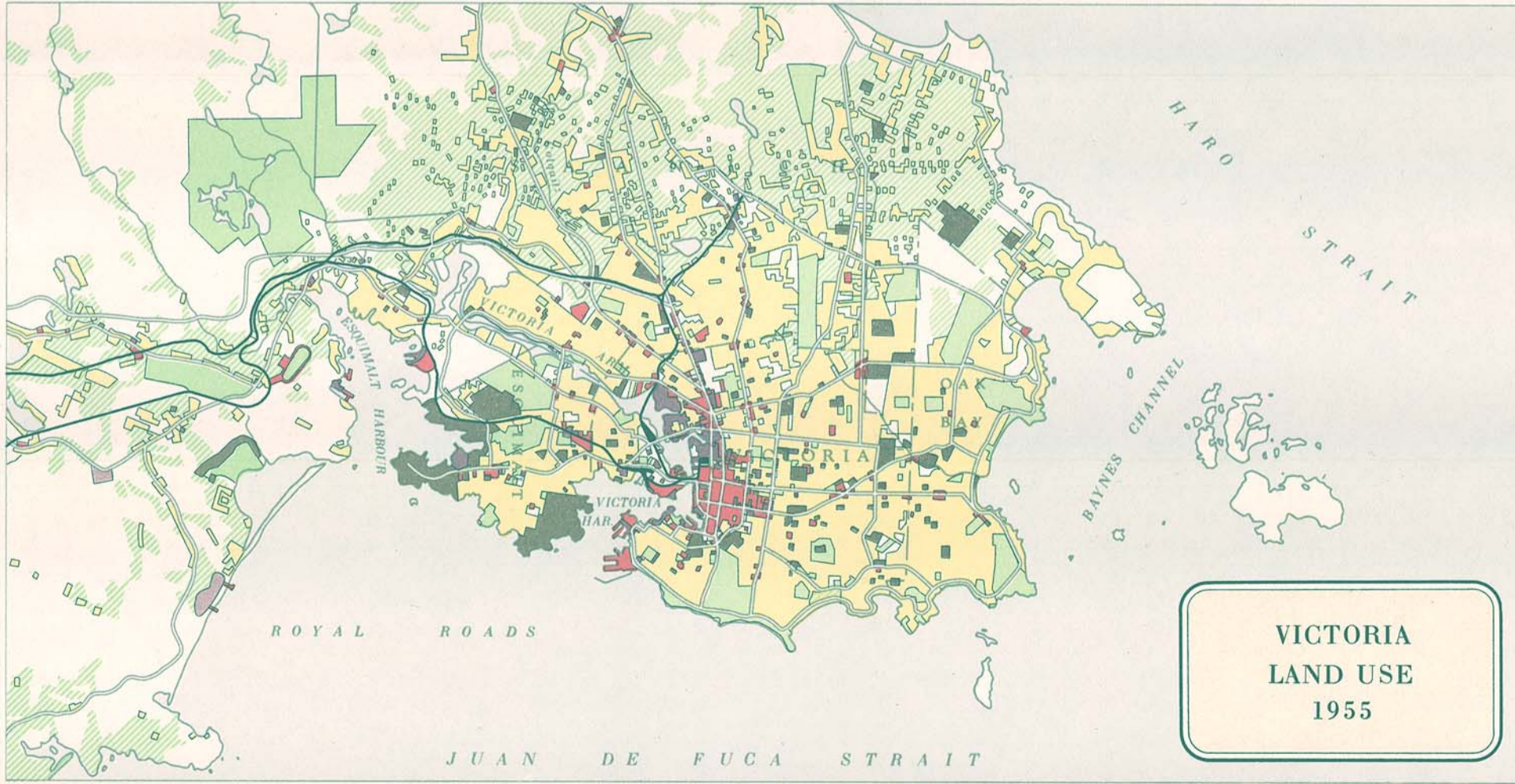
VANCOUVER URBAN GROWTH 1886-1956



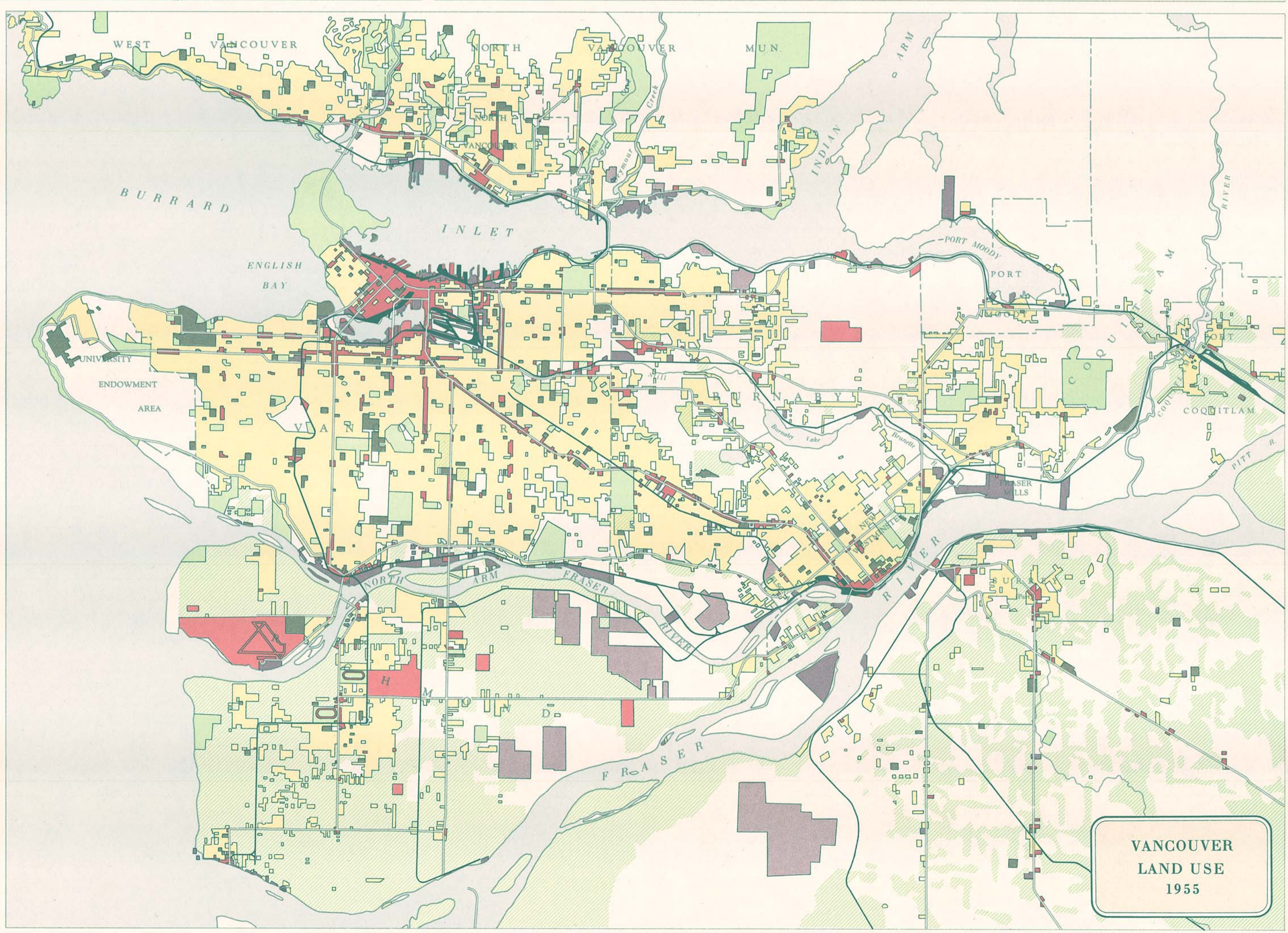
VICTORIA URBAN GROWTH 1851-1955

VICTORIA		VANCOUVER		URBAN GROWTH REFERENCE		
1851 - 1860	1860 - 1878	1886 - 1898	1898 - 1907	1907 - 1934	1934 - 1946	1946 - 1956
[Color swatch]	[Color swatch]	[Color swatch]	[Color swatch]	[Color swatch]	[Color swatch]	[Color swatch]

- [Symbol] MAIN ROADS
- [Symbol] MUNICIPAL BOUNDARIES
- [Symbol] METROPOLITAN BOUNDARIES



VICTORIA LAND USE 1955



VANCOUVER LAND USE 1955

LAND USE REFERENCE			
[Color swatch]	INDUSTRIAL BUILDINGS	[Color swatch]	INSTITUTIONAL BUILDINGS
[Color swatch]	INDUSTRIAL YARDS, PEAT WORKINGS, GRAVEL PITS	[Color swatch]	RESIDENTIAL BUILDINGS
[Color swatch]	COMMERCIAL BUILDINGS, AIRPORTS AND DOCKS	[Color swatch]	PARKS AND PLAYGROUNDS
[Color swatch]	COMMERCIAL YARDS	[Color swatch]	CEMETERIES
[Color swatch]	RAILWAYS AND THEIR INSTALLATIONS	[Color swatch]	DOMINANTLY FARMLAND
[Color swatch]	VACANT LAND	[Symbol]	MUNICIPAL BOUNDARIES
		[Symbol]	METROPOLITAN BOUNDARIES