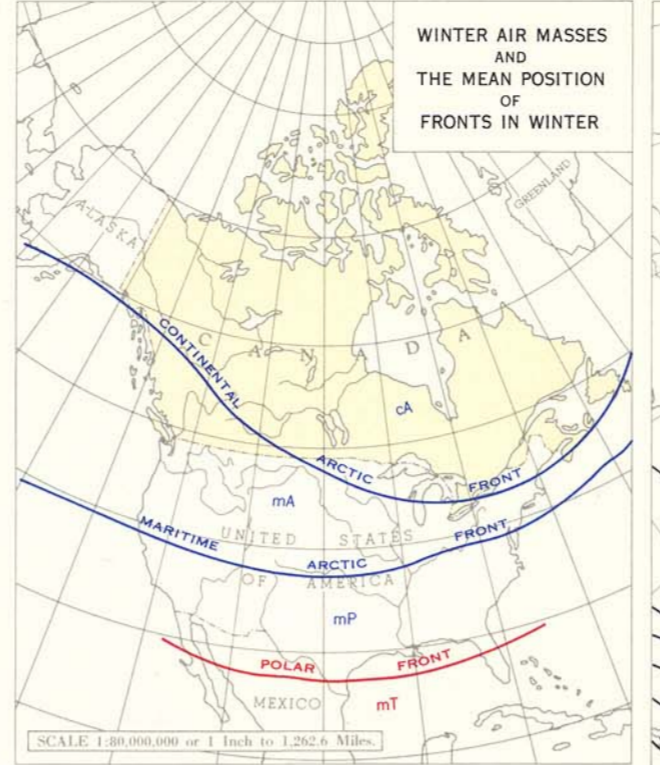
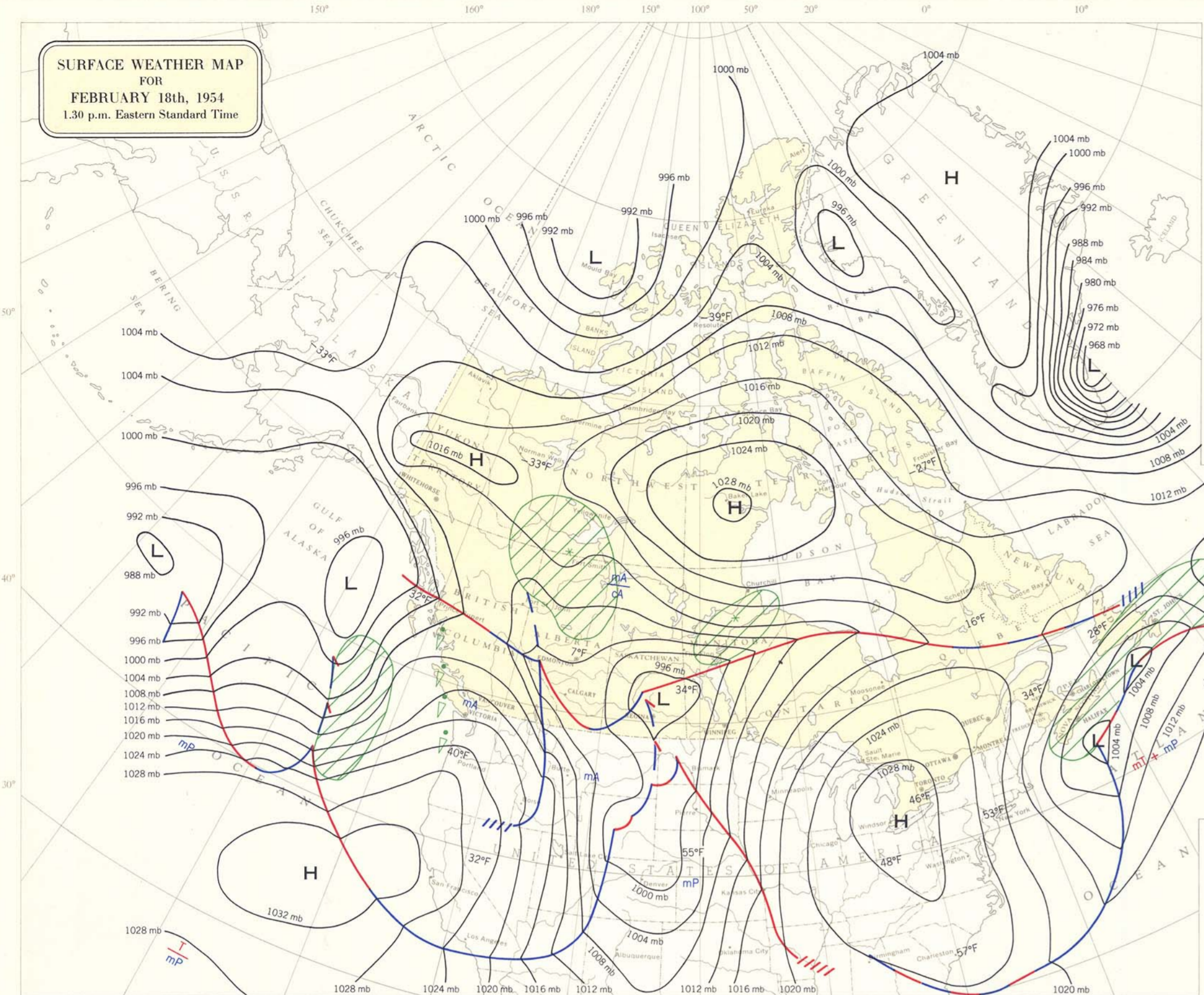
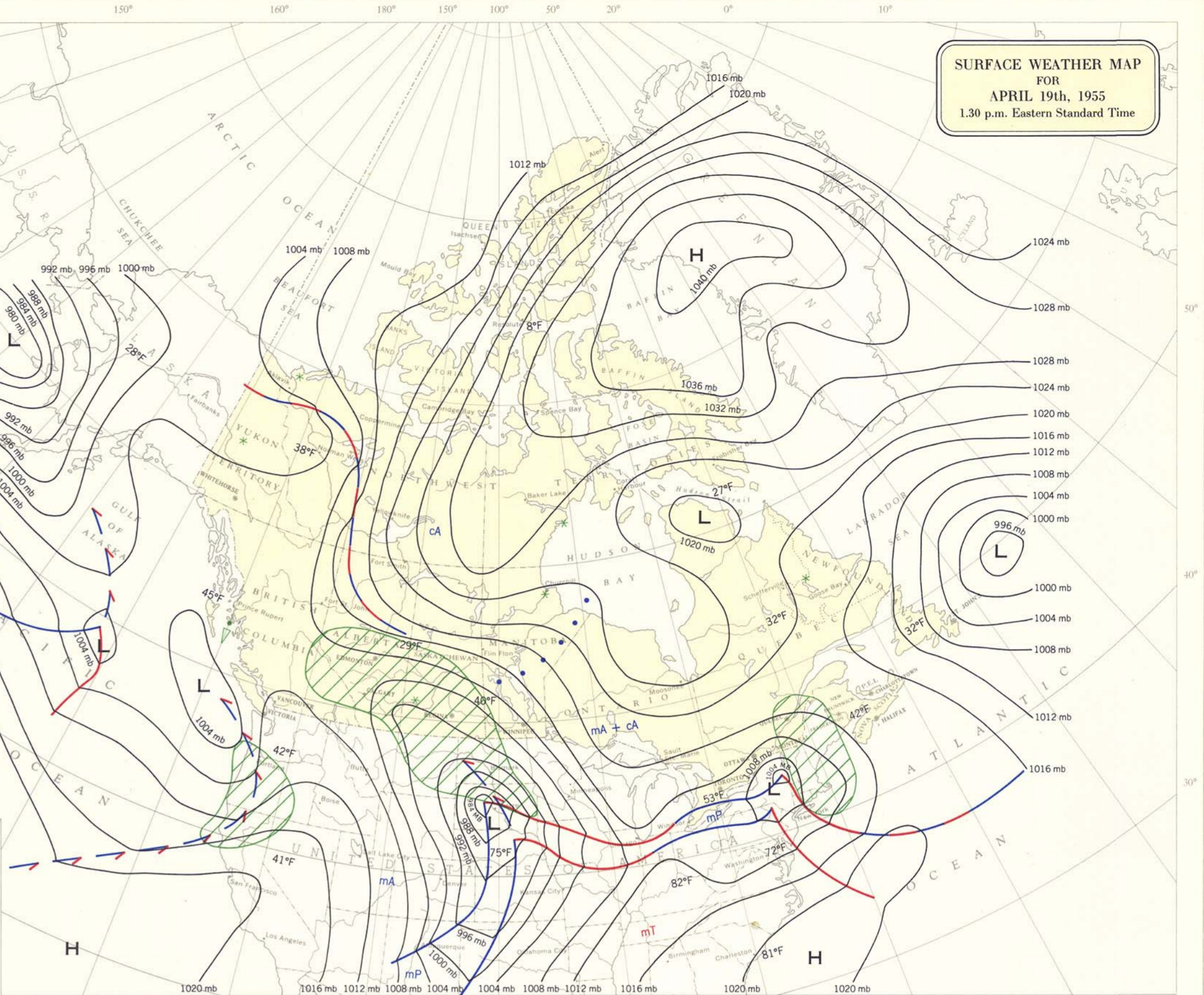


SURFACE WEATHER MAP FOR FEBRUARY 18th, 1954 1.30 p.m. Eastern Standard Time

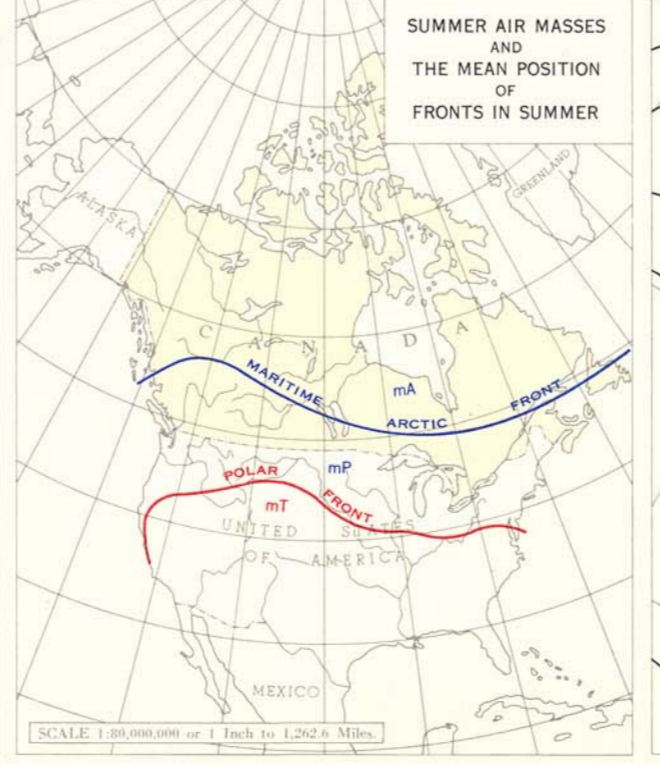
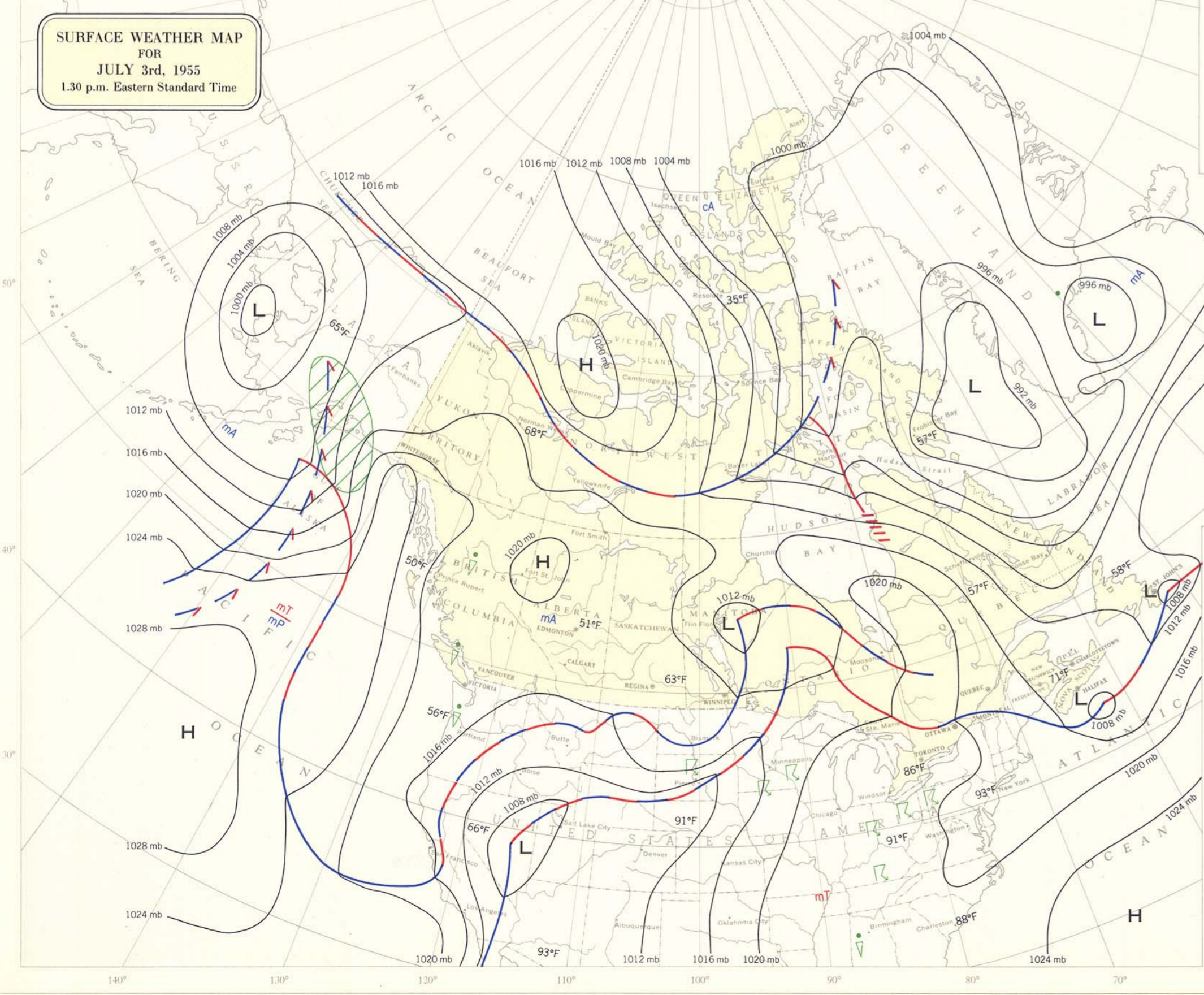


SURFACE WEATHER MAP FOR APRIL 19th, 1955 1.30 p.m. Eastern Standard Time



Legend for weather symbols including H (Centre of High Pressure), L (Centre of Low Pressure), precipitation types (Rain, Drizzle, Rain Shower, Snow, Soft Hail Shower, Thunderstorm), front types (Warm, Cold, Quasi-stationary), and air masses (Tropical, Polar, Arctic).

SURFACE WEATHER MAP FOR JULY 3rd, 1955 1.30 p.m. Eastern Standard Time



SURFACE WEATHER MAP FOR OCTOBER 12th, 1954 1.30 p.m. Eastern Standard Time

