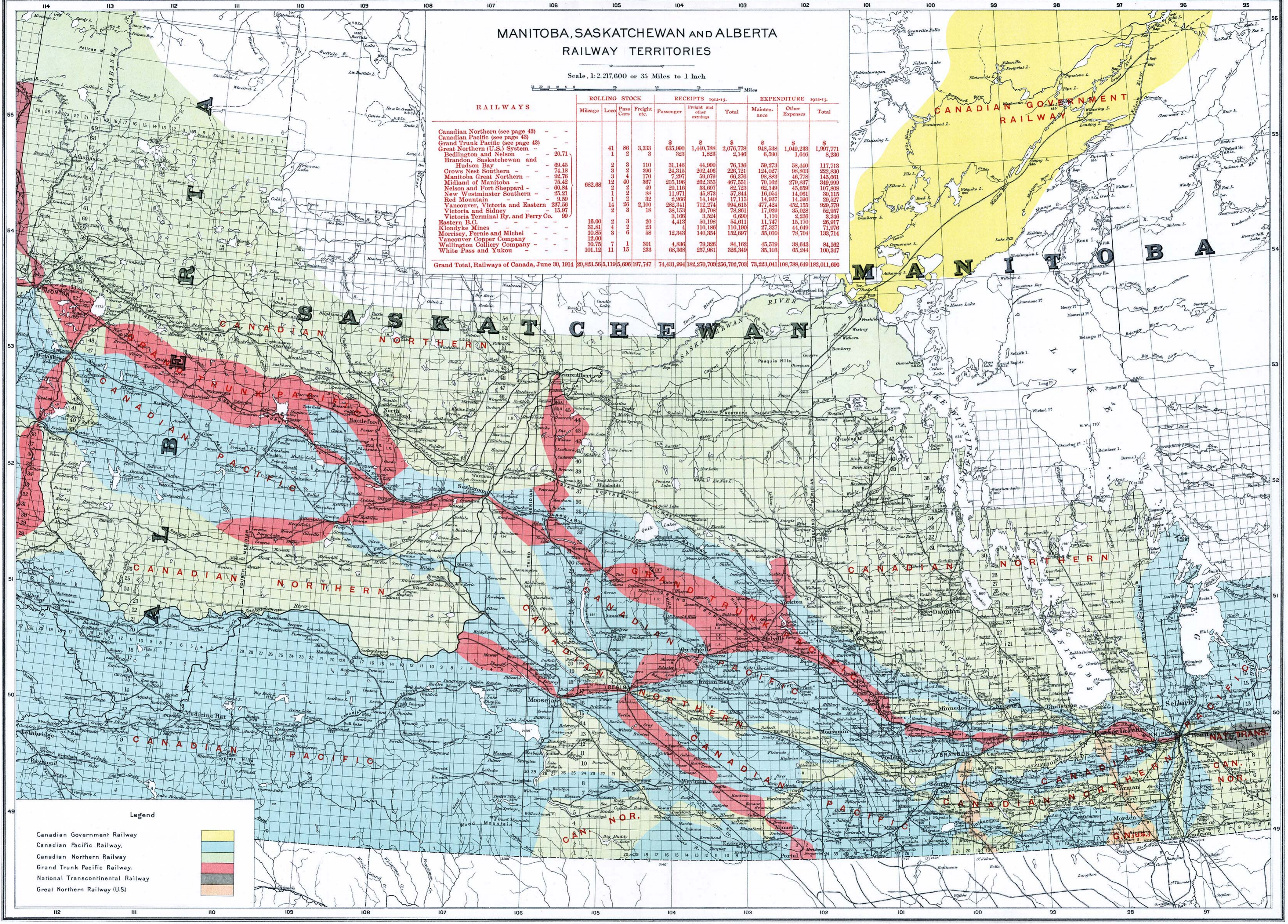


MANITOBA, SASKATCHEWAN AND ALBERTA RAILWAY TERRITORIES

Scale: 1:2,27,600 or 35 Miles to 1 Inch

RAILWAYS	ROLLING STOCK				RECEIPTS 1912-13.		EXPENDITURE 1912-13.	
	Mileage	Loco	Pass Cars	Freight etc.	Passenger	Freight and other earnings	Mainten-ance	Other Expenses
Canadian Northern (see page 43)	-	-	-	\$ 635,990	\$ 1,440,788	\$ 2,076,778	\$ 948,538	\$ 1,040,233
Canadian Pacific (see page 43)	-	-	-	323	1,823	2,140	6,590	1,646
Grand Trunk Pacific (see page 43)	-	-	-	-	-	-	-	-
Great Northern (U.S.) System -	20.71	41	86	3,333	3	3	3	3
Bedford and Nelson	-	1	2	110	31,146	44,990	59,273	58,440
Brandon, Saskatchewan and Hudson Bay -	69.45	2	3	24,315	202,406	229,721	121,027	98,803
Crows Nest Southern -	74.18	3	2	30,079	93,376	98,883	46,778	145,061
Manitoba Great Northern -	92.76	170	4	205,196	292,353	467,551	70,102	279,897
Midland of Manitoba -	75.42	12	40	20,116	53,697	82,723	62,149	45,659
Nelson and Fort Sheppard -	60.84	2	2	11,971	45,873	57,844	16,054	14,061
New Westminster Southern -	25.21	1	2	2,969	14,149	17,115	14,937	13,390
Red Mountain -	9.59	1	2	282,311	712,274	994,615	477,434	452,155
Victoria, Victoria and Eastern	237.56	14	26	2,100	11,186	11,186	27,357	44,049
Victoria and Sidney -	15.97	2	3	38,153	40,708	78,861	17,929	35,028
Victoria Terminal Ry. and Ferry Co.	69	2	3	3,166	3,524	6,690	1,119	2,226
Eastern B.C.	-	31.81	4	2	4,413	30,198	55,611	15,170
Klondyke Mines -	-	10.85	3	6	58	140,354	152,697	55,010
Morrissey, Pernie and Michel	-	12.00	7	1	4,896	79,326	84,102	45,519
Vancouver Copper Company	-	10.75	1	15	233	329,349	35,103	65,244
Wellington Colliery Company	-	101.12	11	15	233	329,349	35,103	65,244
White Pass and Yukon	-	-	-	-	-	-	-	-
Grand Total, Railways of Canada, June 30, 1914	29,823,505	119,506	197,747	74,431,994	182,270,709	266,702,703	73,223,041	108,788,649



Legend

- Canadian Government Railway
- Canadian Pacific Railway.
- Canadian Northern Railway
- Grand Trunk Pacific Railway.
- National Transcontinental Railway
- Great Northern Railway (U.S.)

