

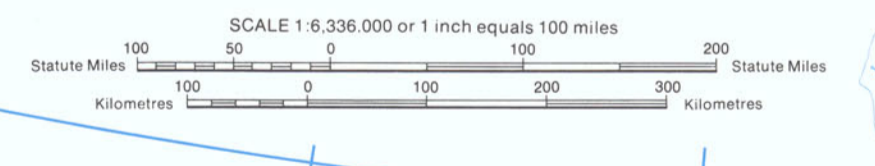


INDEX TO
1:250,000 MAP SERIES
OF THE
NATIONAL
TOPOGRAPHIC SYSTEM

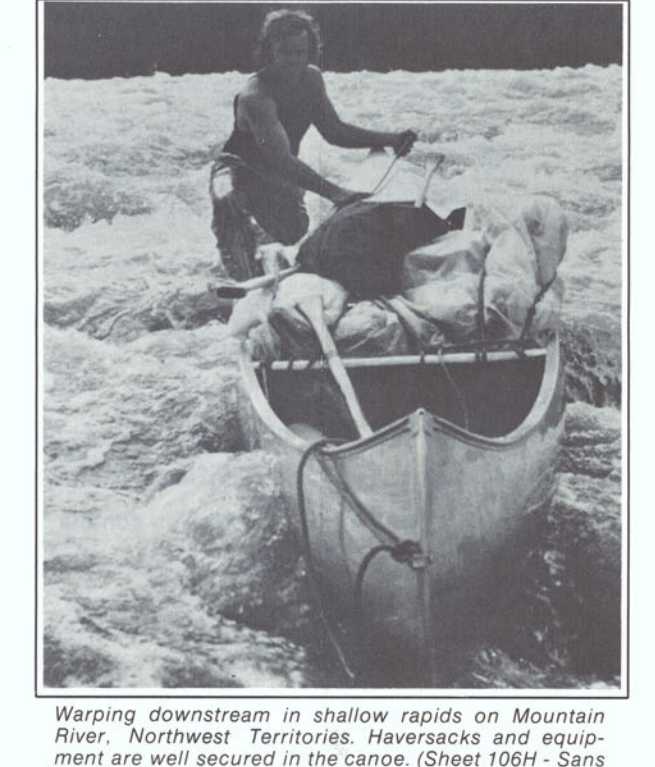
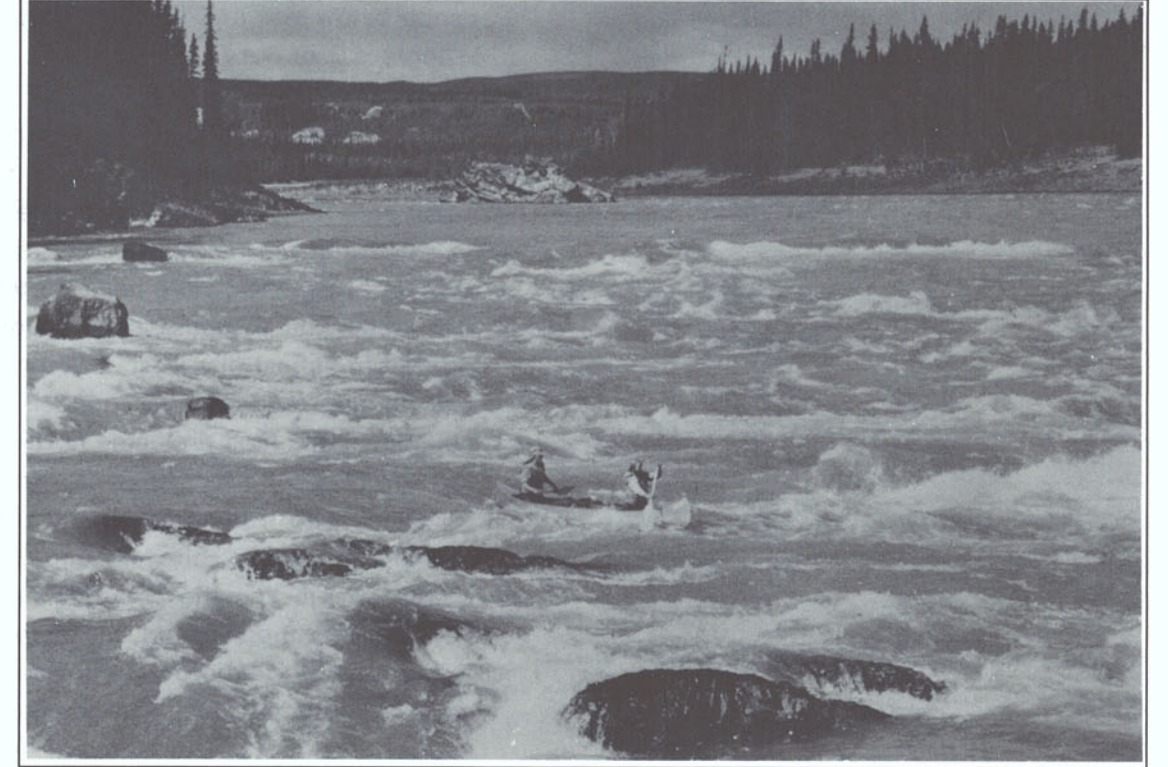
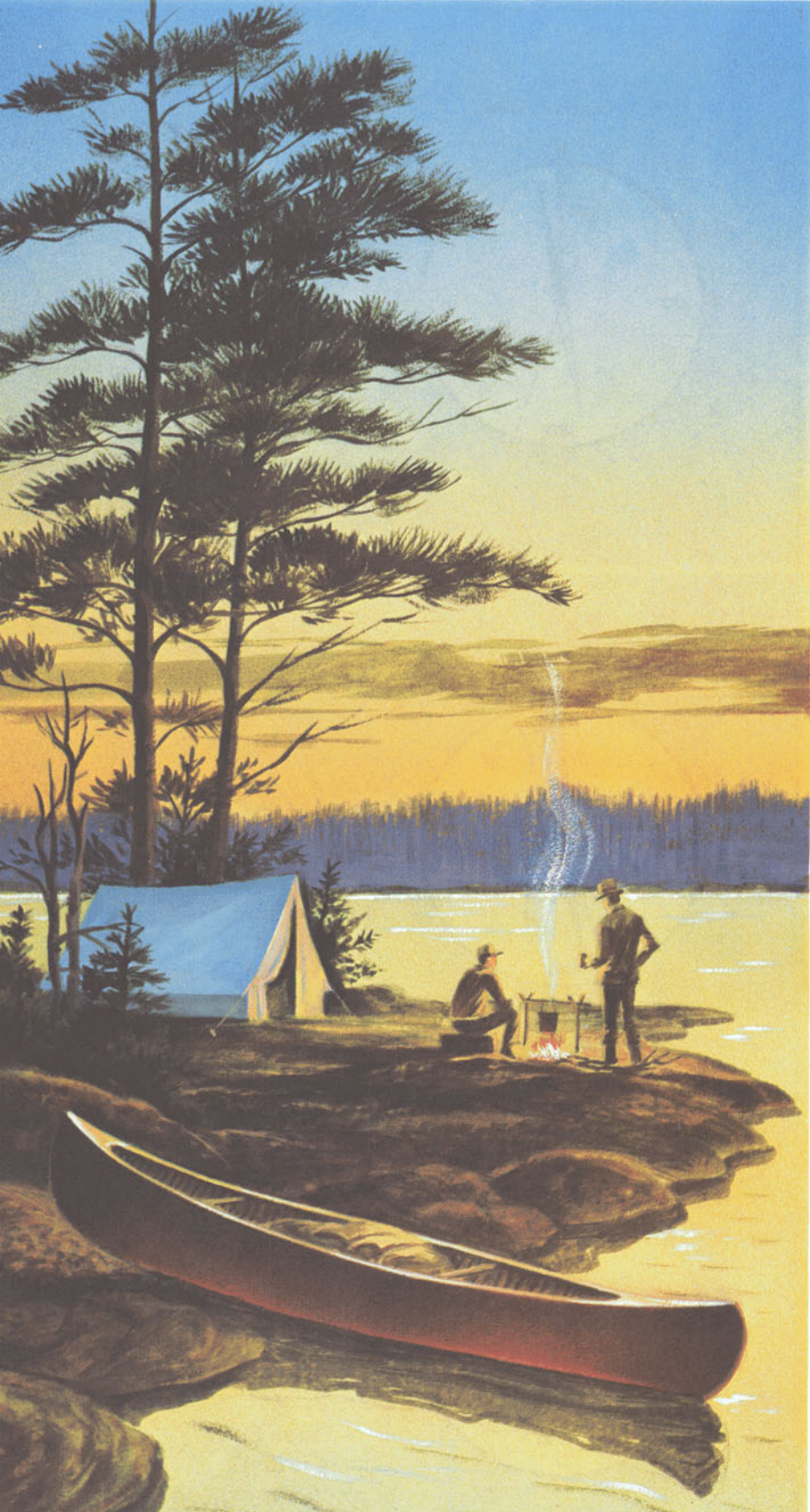
These maps are prepared from air photos and, while they are the best available, their accuracy in depicting every potential hazard cannot be guaranteed.

Individuals interested in obtaining a copy of this brochure may do so by writing to the CANADA MAP OFFICE, 615 Booth Street, Ottawa, K1A 0E8, or your nearest map dealer. Please specify MCR 107.

Cette brochure est aussi disponible en français.



Canada
Energy, Mines and
Resources Canada
Maps and
Wilderness
Canoeing



Having surveyed the rapids ahead, the canoeists make a stop to check their position on the map. The canoe is safely aground; Bloodvein River on Sheet 62 P - Hsica.

Shooting the Brûlé Rapids, on Lard River (Northwest British Columbia), (Sheet 94 M - Rabbit River).

Warping downstream in shallow rapids on Mountain River, Northwest Territories. Haversacks and equipment are well secured in the canoe. (Sheet 106 H - Sans Saül Rapids).

Warping against the stream on Tusequah River in British Columbia. Although this photograph was taken in 1906, the technique hasn't changed. (Sheet 104 K - Tusequah).

Encampment, Mackenzie Mountains, N.W.T. The low tents withstand well the violent winds. (Sheet 106 H - Sans Saül Rapids).