

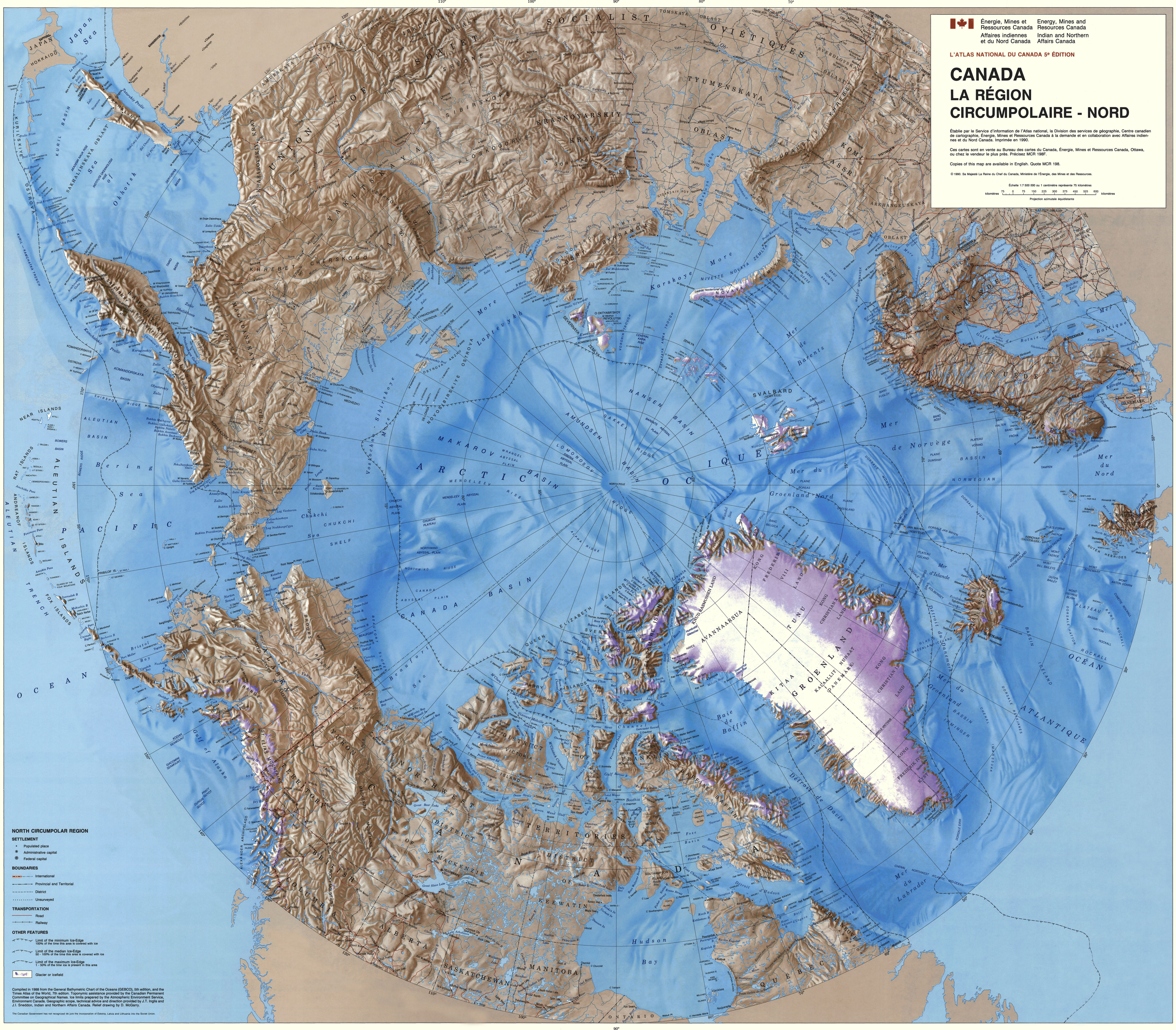
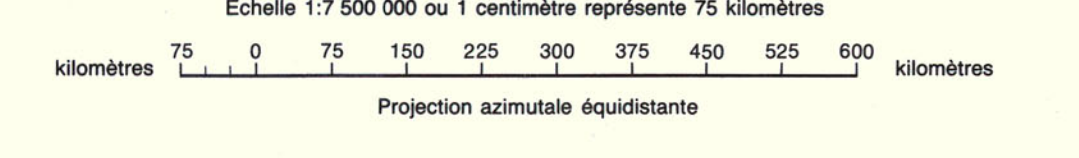
# CANADA LA RÉGION CIRCUMPOLAIRE - NORD

Établi par le Service d'information de l'Atlas national, la Division des services de géographie, Centre canadien de cartographie, Énergie, Mines et Ressources Canada à la demande et en collaboration avec Affaires indiennes et du Nord Canada. Imprimé en 1990.

Ces cartes sont en vente au Bureau des cartes du Canada, Énergie, Mines et Ressources Canada, Ottawa, ou chez le vendeur le plus près. Précisez MCR 198.

Copies of this map are available in English. Quote MCR 198.

© 1990. Sa Majesté La Reine du Canada, Ministère de l'Énergie, des Mines et des Ressources.



**NORTH CIRCUMPOLAR REGION**

**SETTLEMENT**

- Populated place
- Administrative capital
- Federal capital

**BOUNDARIES**

- International
- Provincial and Territorial
- District
- Unsurveyed

**TRANSPORTATION**

- Road
- Railway

**OTHER FEATURES**

- Limit of the minimum ice-edge  
100% of the time this area is covered with ice
- Limit of the median ice-edge  
50% of the time this area is covered with ice
- Limit of the maximum ice-edge  
1% of the time ice is present in this area
- Glacier or icefield

Compiled in 1988 from the General Bathymetric Chart of the Oceans (GEBCO), 5th edition, and the Times Atlas of the World, 7th edition. Topographic assistance provided by the Canadian Permanent Committee on Geographical Names, ice limits prepared by the Atmospheric Environment Service, Environment Canada. Geographic scope, technical advice and direction provided by J.T. Inglis and J.L. Swenden, Indian and Northern Affairs Canada. Relief drawing by D. McInstry.

The Canadian Government has not recognized de jure the incorporation of Estonia, Latvia and Lithuania into the Soviet Union.