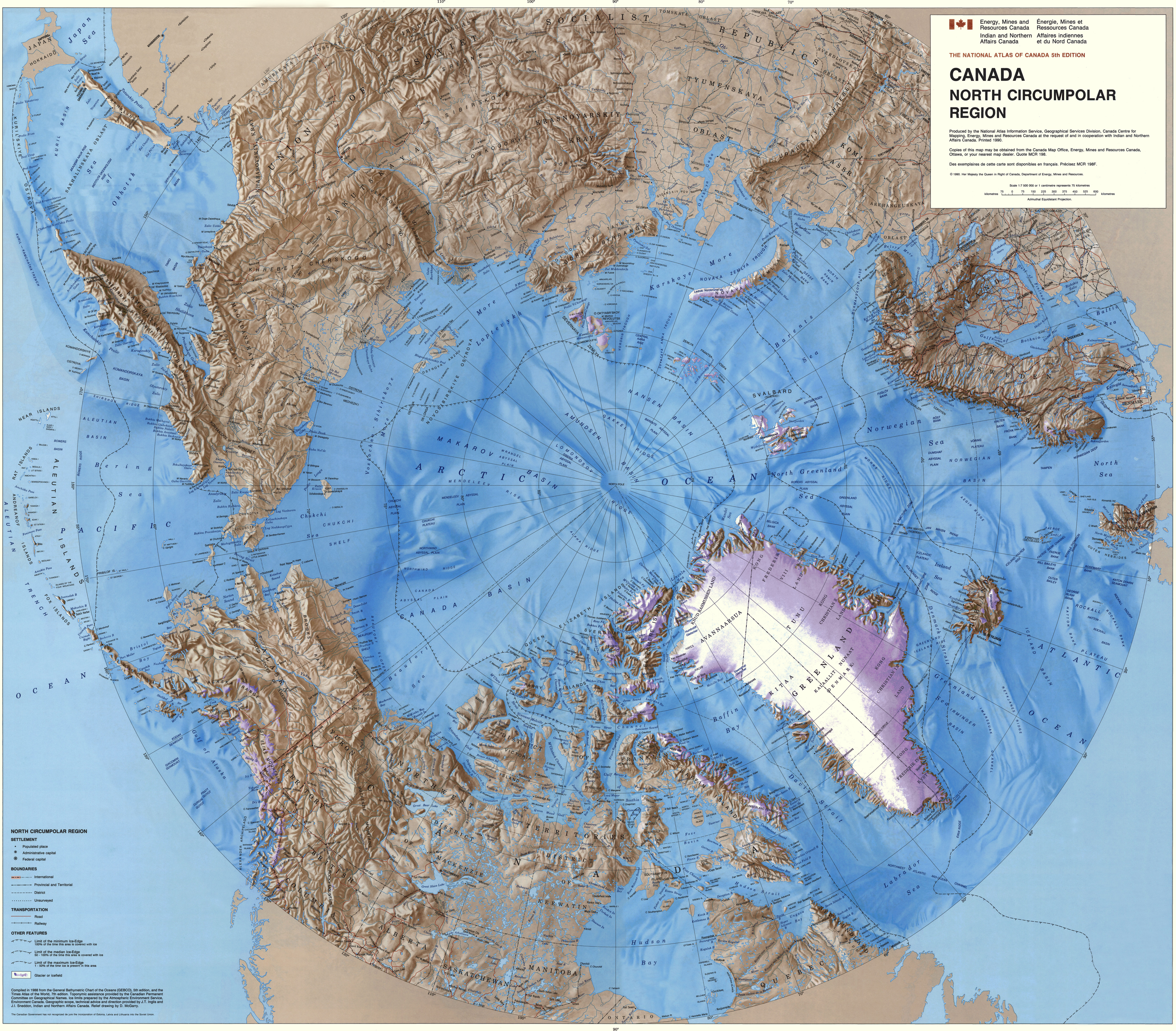


CANADA NORTH CIRCUMPOLAR REGION

Produced by the National Atlas Information Service, Geographical Services Division, Canada Centre for Mapping, Energy, Mines and Resources Canada at the request of and in cooperation with Indian and Northern Affairs Canada. Printed 1990.
Copies of this map may be obtained from the Canada Map Office, Energy, Mines and Resources Canada, Ottawa, or your nearest map dealer. Quote MCR 198.
Des exemplaires de cette carte sont disponibles en français. Précisez MCR 198F.

© 1990 Her Majesty the Queen in Right of Canada, Department of Energy, Mines and Resources.
Scale 1:7 500 000 or 1 centimetre represents 75 kilometres
kilomètres 75 0 75 150 225 300 375 450 525 600
Annual Equal-Area Projection



NORTH CIRCUMPOLAR REGION

SETTLEMENT

- Populated place
- Administrative capital
- Federal capital

BOUNDARIES

- International
- Provincial and Territorial
- District
- Unsurveyed

TRANSPORTATION

- Road
- Railway

OTHER FEATURES

- Limit of the maximum ice-edge
100% of the time this area is covered with ice
- Limit of the median ice-edge
50-100% of the time this area is covered with ice
- Limit of the minimum ice-edge
1-50% of the time ice is present in this area
- Glacier or icefield

Compiled in 1988 from the General Bathymetric Chart of the Oceans (GEBCO), 5th edition, and the Times Atlas of the World, 7th edition. Topographic assistance provided by the Canadian Permanent Committee on Geographical Names, ice limits prepared by the Atmospheric Environment Service, Environment Canada. Geographic scope, technical advice and direction provided by J.T. Inglis and J.L. Swenson, Indian and Northern Affairs Canada. Relief drawing by D. McHenry.