

CANADA - 1:5 000 000

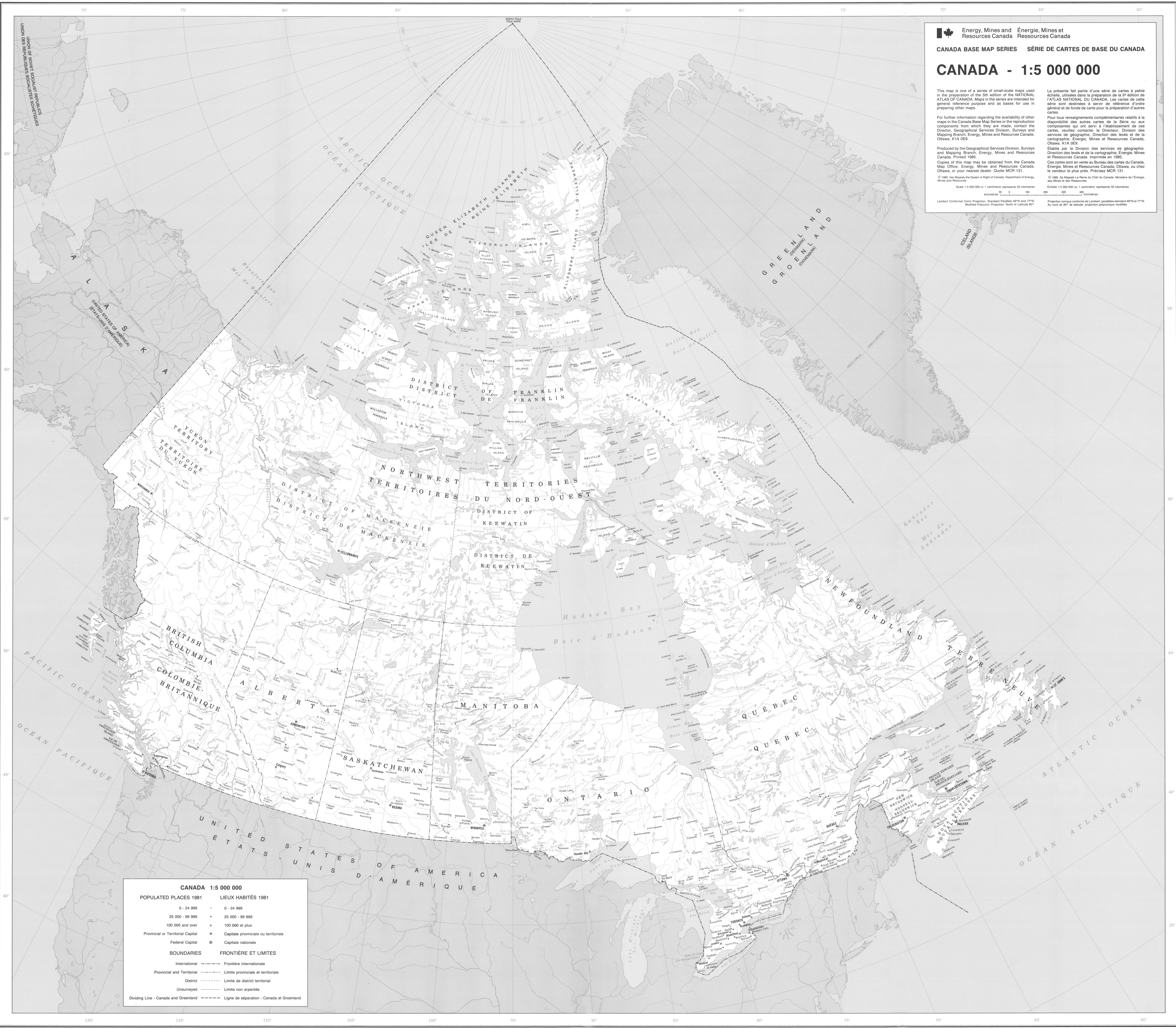
This map is one of a series of small-scale maps used in the preparation of the 5th edition of the NATIONAL ATLAS OF CANADA. Maps in the series are intended for general reference purpose and as bases for use in preparing other maps.

For further information regarding the availability of other maps in the Canada Base Map Series or the reproduction components from which they are made, contact the Director, Geographical Services Division, Surveys and Mapping Branch, Energy, Mines and Resources Canada, Ottawa, KIA 0E3.

Produced by the Geographical Services Division, Surveys and Mapping Branch, Energy, Mines and Resources Canada. Printed 1985. Copies of this map may be obtained from the Canada Map Office, Energy, Mines and Resources Canada, Ottawa, or your nearest dealer. Quote MCR 131.

© 1985, Her Majesty the Queen in Right of Canada, Department of Energy, Mines and Resources.
 Scale 1:5 000 000 or 1 centimetre represents 50 kilometres
 Échelle 1:5 000 000 ou 1 centimètre représente 50 kilomètres

Lambert Conformal Conic Projection, Standard Parallels 49°N and 77°N, Modified Polyconic Projection, North of Latitude 80°
 Projection conique conforme de Lambert, parallèles standard 49°N et 77°N, Au nord de 80° de latitude, projection polyconique modifiée.



CANADA 1:5 000 000

POPULATED PLACES 1981	LIEUX HABITÉS 1981
0 - 24 999	• 0 - 24 999
25 000 - 99 999	• 25 000 - 99 999
100 000 and over	• 100 000 et plus
Provincial or Territorial Capital	• Capitale provinciale ou territoriale
Federal Capital	• Capitale nationale
BOUNDARIES	FRONTIÈRE ET LIMITES
International	--- Frontière internationale
Provincial and Territorial	--- Limite provinciale et territoriale
District	--- Limite de district territorial
Unsurveyed	--- Limite non arpentée
Dividing Line - Canada and Greenland	--- Ligne de séparation - Canada et Groenland