

H

H'

1

SCHLUMBERGER BOREHOLE COMPENSATED SONIC LOG

WELL: ...

DATE: ...

LOG NO: ...

2

SCHLUMBERGER BOREHOLE COMPENSATED SONIC LOG

WELL: ...

DATE: ...

LOG NO: ...

3

SCHLUMBERGER BOREHOLE COMPENSATED SONIC LOG

WELL: ...

DATE: ...

LOG NO: ...

4

SCHLUMBERGER BOREHOLE COMPENSATED SONIC LOG

WELL: ...

DATE: ...

LOG NO: ...

5

SCHLUMBERGER BOREHOLE COMPENSATED SONIC LOG

WELL: ...

DATE: ...

LOG NO: ...

6

SCHLUMBERGER BOREHOLE COMPENSATED SONIC LOG

WELL: ...

DATE: ...

LOG NO: ...

7

SCHLUMBERGER BOREHOLE COMPENSATED SONIC LOG

WELL: ...

DATE: ...

LOG NO: ...

8

SCHLUMBERGER BOREHOLE COMPENSATED SONIC LOG

WELL: ...

DATE: ...

LOG NO: ...

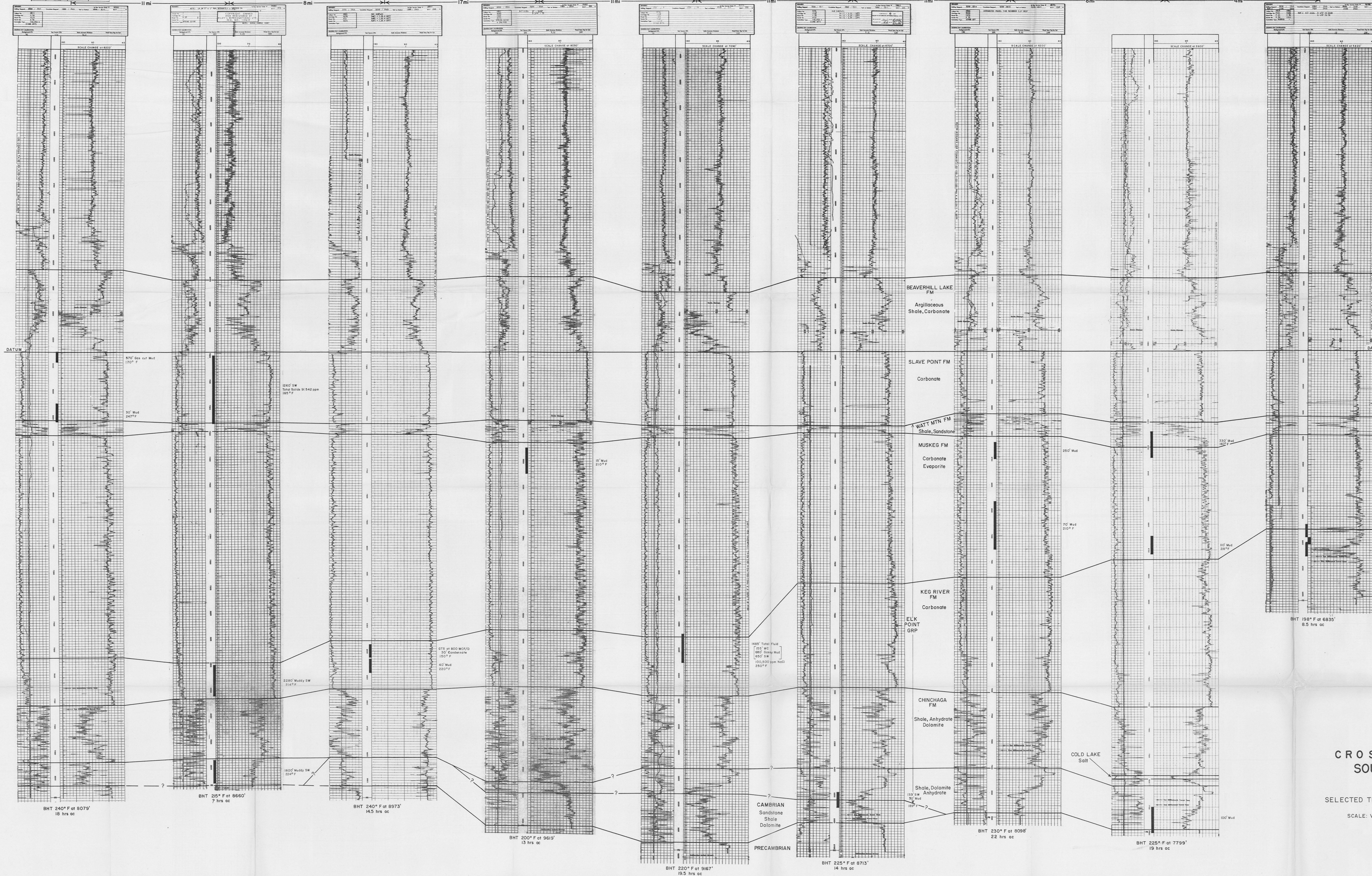
9

SCHLUMBERGER BOREHOLE COMPENSATED SONIC LOG

WELL: ...

DATE: ...

LOG NO: ...



LEGEND AND ABBREVIATIONS

Interval covered by Drill Stem Test Recovery

BHT hrs oc BOTTOM HOLE TEMPERATURE HOURS AFTER CIRCULATION CEASED

Brk BRACKISH

Drig DRILLING

F FAHRENHEIT

GTS GAS TO SURFACE

Max MAXIMUM

MCF/D THOUSANDS OF CUBIC FEET PER DAY

MMCF/D MILLIONS OF CUBIC FEET PER DAY

ppm(NOCI) PARTS PER MILLION

SW SALT WATER

SI SLIGHT (LY)

Sulph SULPHUR (DUS)

Temp TEMPERATURE

TSTM TO SMALL TO MEASURE

Wtr WATER

WtrY WATERY

WC WATER CUSHION

WTS WATER TO SURFACE

FIGURE-10  
**CROSS SECTION H-H'**  
**SOUTH RAINBOW AREA**  
**ALBERTA**  
 SHOWING  
 SELECTED TEMPERATURE AND DRILL STEM TEST DATA  
 SCALE: VERTICAL: 1 INCH TO 100 FEET, HORIZONTAL: NONE



MARCH 1976

This map has been reproduced from a printed edition of the original map. Reproduction for non-commercial use is permitted.