

N

N'

1

2

3

SCHLUMBERGER BOREHOLE COMPENSATED SONIC LOG									
WELL: GULF OIL CANADA LIMITED									
WELL: GULF OIL CANADA LIMITED									
WELL: GULF OIL CANADA LIMITED									
1	2	3	4	5	6	7	8	9	10
11	12	13	14	15	16	17	18	19	20
21	22	23	24	25	26	27	28	29	30
31	32	33	34	35	36	37	38	39	40
41	42	43	44	45	46	47	48	49	50
51	52	53	54	55	56	57	58	59	60
61	62	63	64	65	66	67	68	69	70
71	72	73	74	75	76	77	78	79	80
81	82	83	84	85	86	87	88	89	90
91	92	93	94	95	96	97	98	99	100

BOREHOLE COMPENSATED SONIC LOG									
WELL: GULF OIL CANADA LIMITED									
WELL: GULF OIL CANADA LIMITED									
WELL: GULF OIL CANADA LIMITED									
1	2	3	4	5	6	7	8	9	10
11	12	13	14	15	16	17	18	19	20
21	22	23	24	25	26	27	28	29	30
31	32	33	34	35	36	37	38	39	40
41	42	43	44	45	46	47	48	49	50
51	52	53	54	55	56	57	58	59	60
61	62	63	64	65	66	67	68	69	70
71	72	73	74	75	76	77	78	79	80
81	82	83	84	85	86	87	88	89	90
91	92	93	94	95	96	97	98	99	100

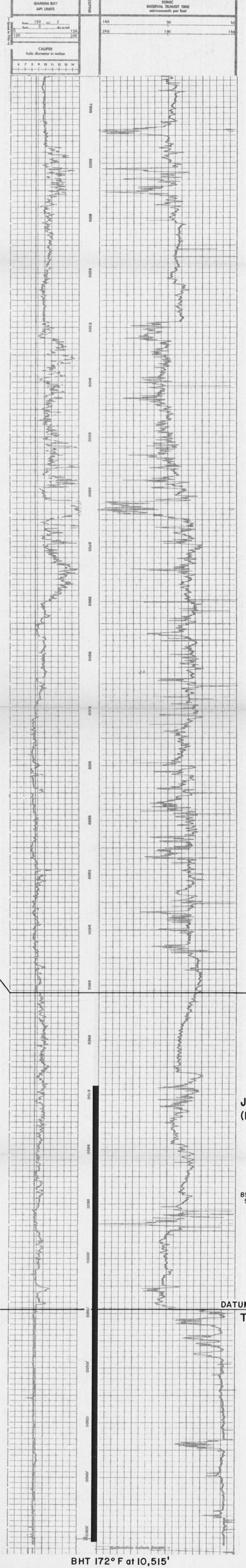
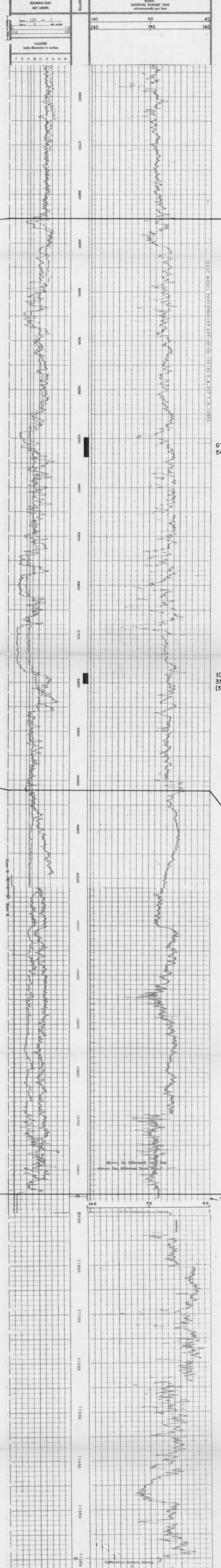
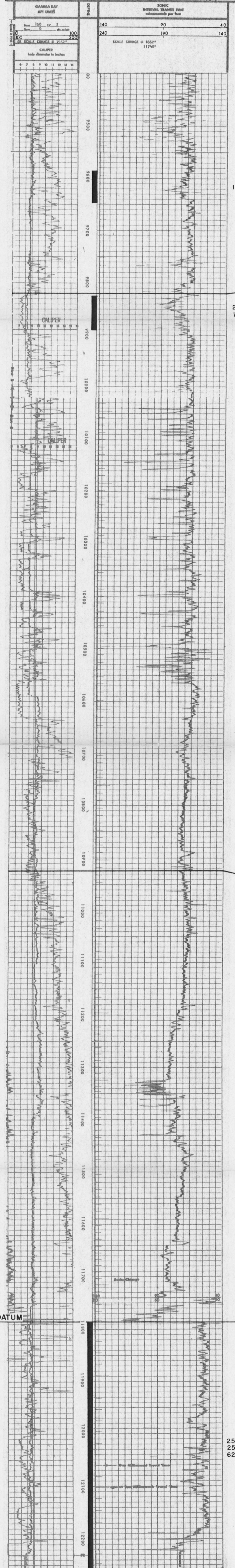
BOREHOLE COMPENSATED SONIC LOG									
WELL: GULF OIL CANADA LIMITED									
WELL: GULF OIL CANADA LIMITED									
WELL: GULF OIL CANADA LIMITED									
1	2	3	4	5	6	7	8	9	10
11	12	13	14	15	16	17	18	19	20
21	22	23	24	25	26	27	28	29	30
31	32	33	34	35	36	37	38	39	40
41	42	43	44	45	46	47	48	49	50
51	52	53	54	55	56	57	58	59	60
61	62	63	64	65	66	67	68	69	70
71	72	73	74	75	76	77	78	79	80
81	82	83	84	85	86	87	88	89	90
91	92	93	94	95	96	97	98	99	100

8mi 1mi

SONIC LOG									
WELL: GULF OIL CANADA LIMITED									
WELL: GULF OIL CANADA LIMITED									
WELL: GULF OIL CANADA LIMITED									
1	2	3	4	5	6	7	8	9	10
11	12	13	14	15	16	17	18	19	20
21	22	23	24	25	26	27	28	29	30
31	32	33	34	35	36	37	38	39	40
41	42	43	44	45	46	47	48	49	50
51	52	53	54	55	56	57	58	59	60
61	62	63	64	65	66	67	68	69	70
71	72	73	74	75	76	77	78	79	80
81	82	83	84	85	86	87	88	89	90
91	92	93	94	95	96	97	98	99	100

SONIC LOG									
WELL: GULF OIL CANADA LIMITED									
WELL: GULF OIL CANADA LIMITED									
WELL: GULF OIL CANADA LIMITED									
1	2	3	4	5	6	7	8	9	10
11	12	13	14	15	16	17	18	19	20
21	22	23	24	25	26	27	28	29	30
31	32	33	34	35	36	37	38	39	40
41	42	43	44	45	46	47	48	49	50
51	52	53	54	55	56	57	58	59	60
61	62	63	64	65	66	67	68	69	70
71	72	73	74	75	76	77	78	79	80
81	82	83	84	85	86	87	88	89	90
91	92	93	94	95	96	97	98	99	100

SONIC LOG									
WELL: GULF OIL CANADA LIMITED									
WELL: GULF OIL CANADA LIMITED									
WELL: GULF OIL CANADA LIMITED									
1	2	3	4	5	6	7	8	9	10
11	12	13	14	15	16	17	18	19	20
21	22	23	24	25	26	27	28	29	30
31	32	33	34	35	36	37	38	39	40
41	42	43	44	45	46	47	48	49	50
51	52	53	54	55	56	57	58	59	60
61	62	63	64	65	66	67	68	69	70
71	72	73	74	75	76	77	78	79	80
81	82	83	84	85	86	87	88	89	90
91	92	93	94	95	96	97	98	99	100



BHT 228° F at 12,236' 36 hrs ac

BHT 177° F at 10,856' 11 hrs ac

NOTE: Not at Bottom of Hole

BHT 172° F at 10,515' 13 1/2 hrs ac

FIGURE - 16
GROSS SECTION N-N'
MACKENZIE DELTA AREA
NORTHWEST TERRITORIES

SHOWING
SELECTED TEMPERATURE AND DRILL STEM TEST DATA

SCALE: VERTICAL: 1 INCH TO 100 FEET, HORIZONTAL: NONE

LEGEND AND ABBREVIATIONS

- INTERVAL COVERED BY DRILL STEM TEST
- DRILL STEM TEST RECOVERY
- BHT BOTTOM HOLE TEMPERATURE hrs ac HOURS AFTER CIRCULATION CEASED
- Brk BRACKISH
- Drig DRILLING
- F FAHRENHEIT
- GTS GAS TO SURFACE
- Max MAXIMUM
- MCF/D THOUSANDS OF CUBIC FEET PER DAY
- MMCF/D MILLIONS OF CUBIC FEET PER DAY
- ppm(CI,NaCl) PARTS PER MILLION
- BHT BOTTOM HOLE TEMPERATURE
- SI SLIGHT (LY)
- Sulph SULPHUR (OUS)
- Temp TEMPERATURE
- TSTM TO SMALL TO MEASURE
- Wtr WATER
- Wtry WATERY
- WC WATER CUSHION
- WTS WATER TO SURFACE
- SW SALT WATER



This map has been reprinted from a scanned version of the original map. Reproduction par numérisation d'une carte sur papier.