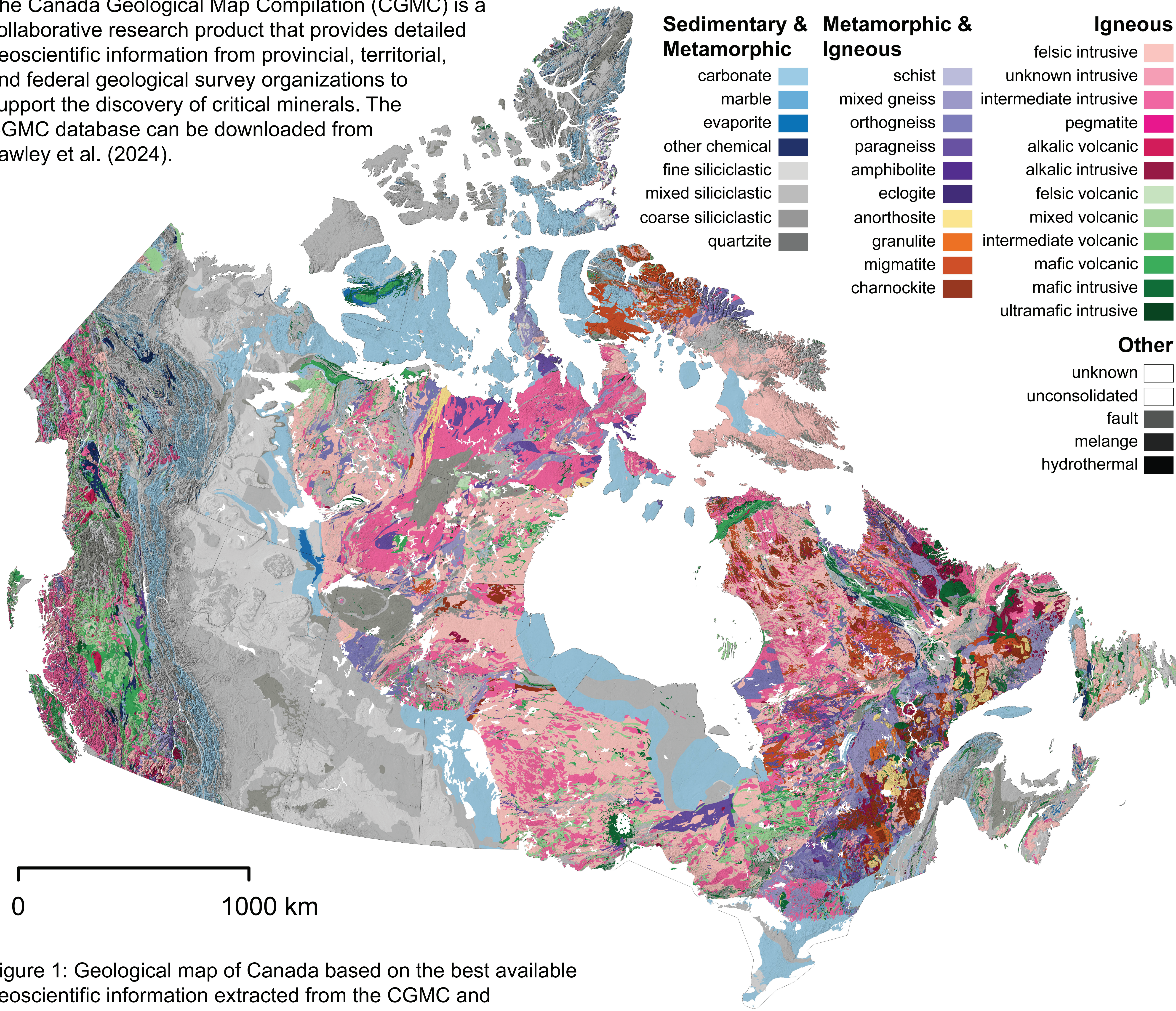


The Canada Geological Map Compilation (CGMC) is a collaborative research product that provides detailed geoscientific information from provincial, territorial, and federal geological survey organizations to support the discovery of critical minerals. The CGMC database can be downloaded from Lawley et al. (2024).



0 1000 km

Figure 1: Geological map of Canada based on the best available geoscientific information extracted from the CGMC and superimposed on a hillshade image.

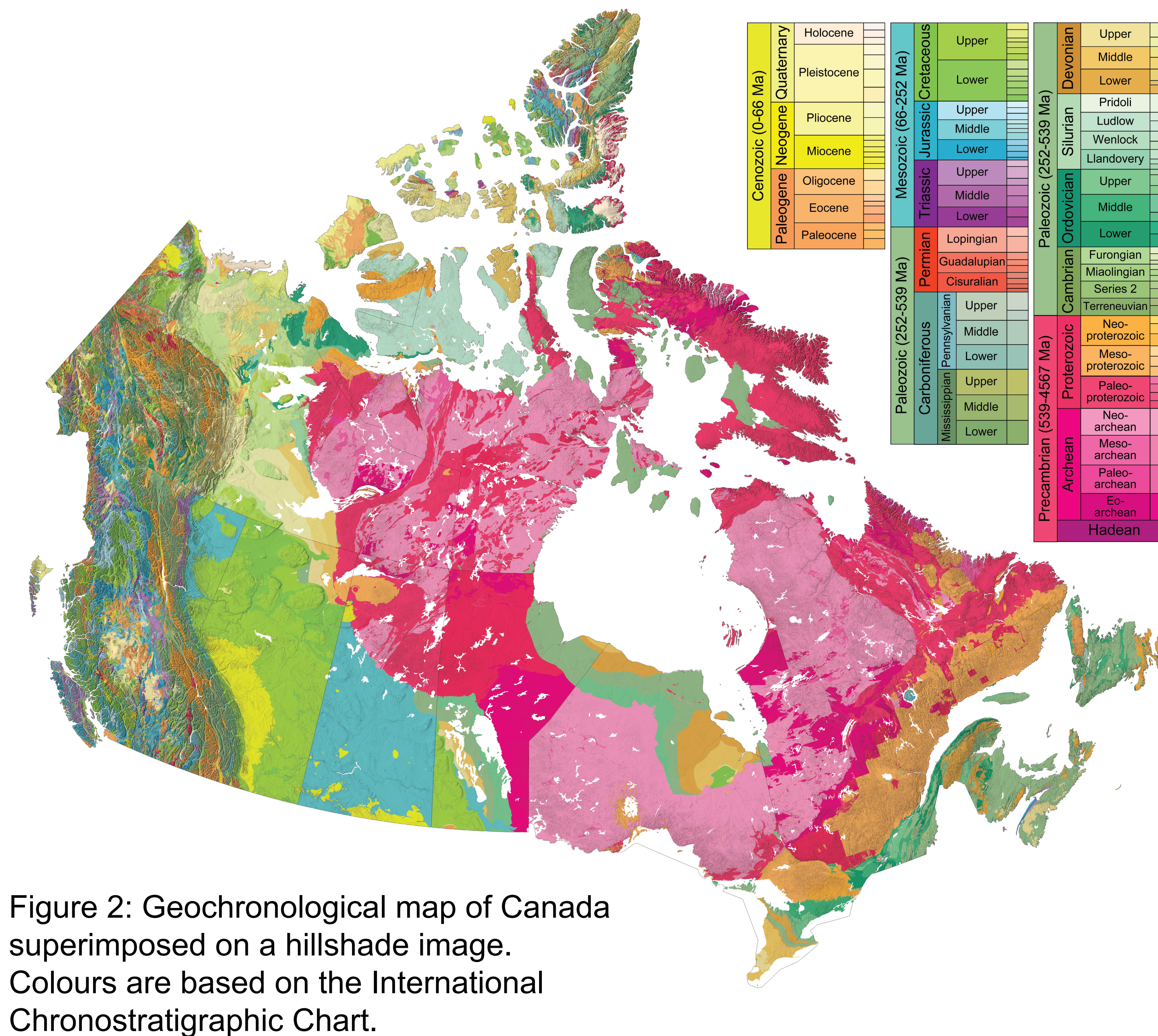


Figure 2: Geochronological map of Canada superimposed on a hillshade image. Colours are based on the International Chronostratigraphic Chart.

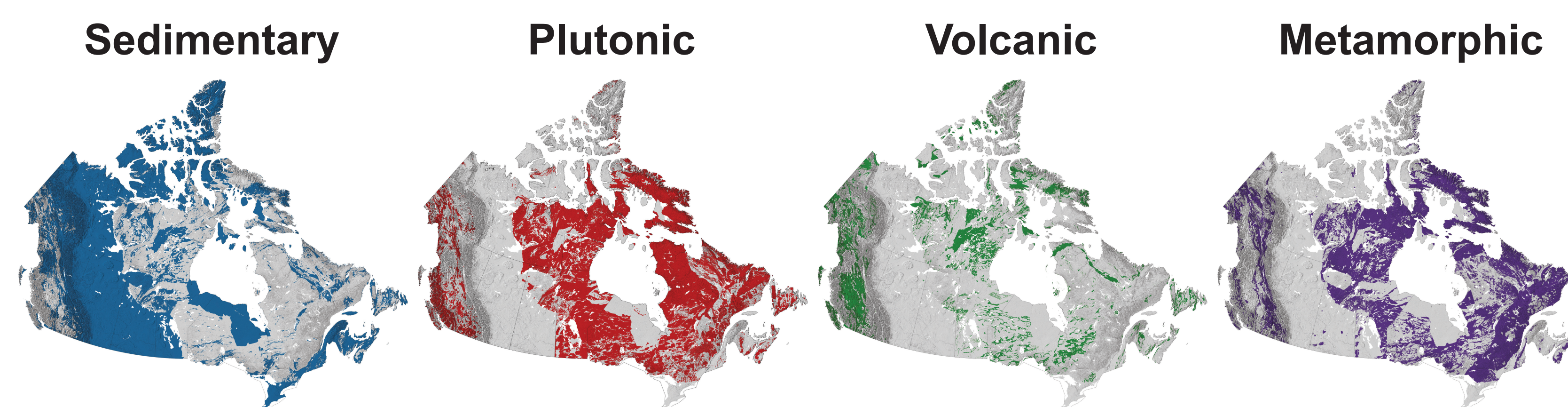


Figure 3: Distribution of sedimentary, plutonic, volcanic, and metamorphic rocks based on detailed lithological information extracted from the CGMC and superimposed on hillshade images.

References:  
Lawley, C.J.M., Giddy, P., Katz, L., Chu, N., Francis, A., Carvajal, J., Pinheiro, M., Tirona, K., Dettman, A., Chen, H., and Aucoin, F., 2024. Canada geological map compilation; Geological Survey of Canada, Open File 9169, 1 zip file. <https://doi.org/10.4095/pf8955jgu>