

See 150th Staff
Events List, p. 4

Ser
QE
185
G464
1/1

OC912

The ADM's Column

March 1992



LIBRARY / B
TREQUE

Volume 1, Number 1

MAR 24 1992

GEOLOGICAL SURVEY
COMMISSION GEOLOGIQUE

Tour d' Horizon

My " Overview Column " will appear in each issue of Geode, and will deal chiefly with my personal views on issues that affect the GSC. I am determined that the Survey successfully meets the needs of our clients and Canadian society, but equally so that it becomes an even better place to work in. If you have any comments about the ideas expressed in **Tour d'Horizon**, please contact me or the editor of Geode, Kateri Marchand.

(See *Tour d'Horizon* page 2)



From left to right: Ken Babcock (GSC), Howard Stockford and Jim Gill from Aur Resources, and Sir Logan personified by Les Gallagher from EMR Communications. (See *Second GSC Mineral Colloquium* page 7).

Communication

GSC Amateur Radio Club

The Ottawa GSC Amateur Radio Club was recently formed to help the Geological Survey of Canada celebrate its sesquicentennial.

We thought that VE3GSC would be a distinctive and appropriate station call sign, but it was already allocated to Jamie R. Hanson of Mississauga, Ontario. However, we contacted Mr. Hanson, explained the situation and he graciously asked Communications Canada to transfer the call sign to our Club. We particularly appreciate Jamie's gesture as he was only 11 years old when first licensed! Jamie's new call sign is VE3JRH; this call sign through good fortune, being available for allocation to his station.

VE3GSC will be participating in various 150th Anniversary activities (e.g. the GSC-EMR Open House) and major international amateur radio contests. Distinctive QSL cards (notice of successful 2-way communications) are being prepared to send to amateur radio stations that contact VE3GSC.

(See *Amateur Radio* page 2)



Geological Survey of Canada Newsletter



Tour d'Horizon

(continued from page 1)

Local Heroes: Once again the annual GSC Forum and Minerals Colloquium have been resounding successes and despite the economic difficulties facing our client industries, over 900 attended. These events truly represent the quality which the Survey strives for. Thanks to all of you who participated in these successes. You did a fine job whether it was in producing the incredible amount of printed material required for the meeting, organizing the meeting, preparing a poster or giving a talk. Special thanks to the Geoscience Information and Communications Division for just-in-time arrival of Current Research, GSC Annual Review and the GSC Strategic Plan. The Survey is proud of all who made these events a success.

Industrial Collaboration, an incentive: We are all acutely aware of the economic malaise affecting Canada, and particularly our traditional clients in the mining and energy industries. We also know that prosperity is the number one issue concerning Canadians today and is very much a concern of Government. We at the GSC can support our client industries through undertaking collaborative work with individual companies or consortia of companies. The Survey already engages in many projects of this type in addition to our science projects oriented toward the public good.

To encourage our staff and industry to seek opportunities to perform collaborative projects, I have asked that a \$500,000 fund is established commencing in 1992-93 to support collaborative research with industry. The fund will be available for projects in any division on terms to be developed by the Program Committee (the Committee of Directors), with the selection of projects to be funded also decided by the Program Committee. We have many entrepreneurial individuals and groups within the Survey, so here is your chance to do some new research and increase your budget. Go for it! It is expected that the fund will exist at the same dollar level for two years.

Overhead a source of resources: Let's work smarter and cheaper so that we have more resources to spend on science. The saving per improvement will probably be small, but they can aggregate to a lot of dollars. Here are some examples of how to reduce costs and overhead which I thought of, but I am sure you can come up with more.

(See *Tour d'Horizon* page 3)

Amateur Radio

(continued from page 1)

We would like to know how many GSC employees are licensed amateur radio operators. Please contact me at the following number (613) 995-5366. ✱

Alan Goodacre
Custodian of VE3GSC

Geode Production Team

- Chief editor:
Kateri Marchand
- Editorial advisor:
Bill Morgan
- French editor:
Benoît Couture
- English editors:
Bill Morgan, Christie Vodden
- Layout:
K. Marchand, Mike Kiel

Because Geode is an informal sector newsletter, it should not be quoted or cited as a publication. Geode is not available for distribution outside the Geological Survey of Canada.

Publication date of next issue:
First week of April 1992

This document was produced
by scanning the original publication.

Ce document est le produit d'une
numérisation par balayage
de la publication originale.

Editorial

A New Beginning

Well welcome to this first edition of Geode, the new GSC information newsletter. The name Geode was chosen for this new newsletter because of the particularity that geodes have of being unattractive from the outside but, full of unexpected wonders inside! Thus, Geode will take from its namesake from having a plain exterior but a great content!

At this stage, Geode is being produced on a trial basis for three months (March to May) following which, the project will be reviewed and, according to your comments, will either continue or stop. The idea of a monthly newsletter for the GSC has emerged from the consultation process undertaken within the Mission project. On many occasions, the lack of communication throughout the organization has been mentioned by you. With the creation of Geode, we hope to improve the exchange of information and facilitate its diffusion from coast to coast.

This first issue of Geode gives you an idea of the format of the newsletter; i.e. a mix of interesting or amusing news from the different divisions as well as some regular columns that will be published every month.

I leave you here hoping this issue of Geode will entertain and please you. The success of Geode depends on your contribution. Do not hesitate to contact me if you have any comments or suggestions to make.

Until next month !

Kateri Marchand



Tour d'Horizon

(continued from page 2)

- *Plan travel in advance to obtain savings:*

As you know, conference travel is now approved by the ADM except for multi-attendee conferences where the Deputy's approval is required. Travel requests get one day service in my office.

- *Logistic costs:*

Share charters - avoid short trips to the field - consider shipping costs, travel light, will you really use all those samples?

- *Combine orders:*

When making purchases, where possible to reduce the number of orders placed. I am told that it costs about \$50.00 to process a single purchase order. Not cheap.

- *Use modern technologies:*

Instead of flying across the country, make use of conference calls. Soon all our offices will be linked electronically by E-Mail; use it instead of sending paper memos. As the GSC network becomes fully operational the Survey's Executive Committee will use it as the mechanism to communicate instead of memos, whenever possible.

The Mission teams which exist in every division are an excellent means of searching for ways to reduce overhead. If you have an idea, tell your supervisor, Director or me.

Ken Babcock

Across the country

150th Anniversary Staff Events

Here is a brief list of activities for March and April 1992. Contact the local representatives for the latest news!

■ ATLANTIC GEOSCIENCE CENTRE

April

Throughout the month, an in-house video featuring the staff at AGC will be put together.

Contact: Bosco Loncarevic (902) 426-3549

■ QUEBEC GEOSCIENCE CENTRE

April 14

EXHIBIT AT THE MUSÉE DU SÉMINAIRE DE QUÉBEC

Staff preview of the exhibit at Musée du Séminaire on the 150 years of work accomplished by the GSC. The visit will be followed by a field trip to famous outcrops described by Logan in Québec city. Finally, there will be a stop at Manoir Victoria, the hotel where Logan stayed when working in the Québec area.

Contact: Pierrette Tremblay (418) 654-2601

■ CORDILLERAN DIVISION

April

Things are still in the planning stage for a social event.

Contact: Bert Struik (604) 666-6413

■ INSTITUTE OF SEDIMENTARY AND PETROLEUM GEOLOGY

March 2 & 3

PETROL & GAS FORUM'92

Organized by ISPG and hosted at the Calgary Convention Centre. This event happens only once ever three years.

April 14

GSC ANNIVERSARY DAY

Activities are still being selected. Events considered include a "Burger Burn" picnic and a "Science Theatre" performance.

Contact: Grant Smith (403) 292-7051

■ OTTAWA DIVISIONS

March 1

LOGAN'S LOOP LOPPET

A fun day of cross-country skiing for avid skiers as well as the whole family. Two events are planned; 1) a 15-km open race, with prizes for the top three men and women finishers, and 2) a 5-km open tour for enthusiasts. Lunch is included in the entry fee of \$8.00 for adults and \$4.00 for children.

Contact: Jeanne & John Percival (613) 995-4723

(See *150th Activities* page 5)

150th Staff Events

(continued from page 4)

March 14

DARTS

The place to go to chat, relax and shoot darts on a Saturday afternoon. Consists of team dart playing at the lounge of the RA Centre. Each entering team will take home a set of flights with the GSC logo. The entry fee is \$3. per person.

Contact: Tony Kopf-Johnson (613) 996-4157, Janet Gilliland (613) 992-5067

April 14

EVENING GALA

It is a once in your lifetime event!! We will be celebrating together at the Museum of Nature with dinner, a dance, prizes, Museum tours and exhibits, and videos...all for approximately \$25. per person!

Contact: Jackie Voyce (613) 996-7195

April 14

COMMEMORATIVE CEREMONY

Commemorative ceremony and official opening of Logan Hall for all GSC employees and their family.

Contact: Le'Anne Frieday (613) 996-5763

April 15-16

GSC & EMR OPEN HOUSES

Open to all employees and the public.

Contact: Christy Vodden (613) 995-3084

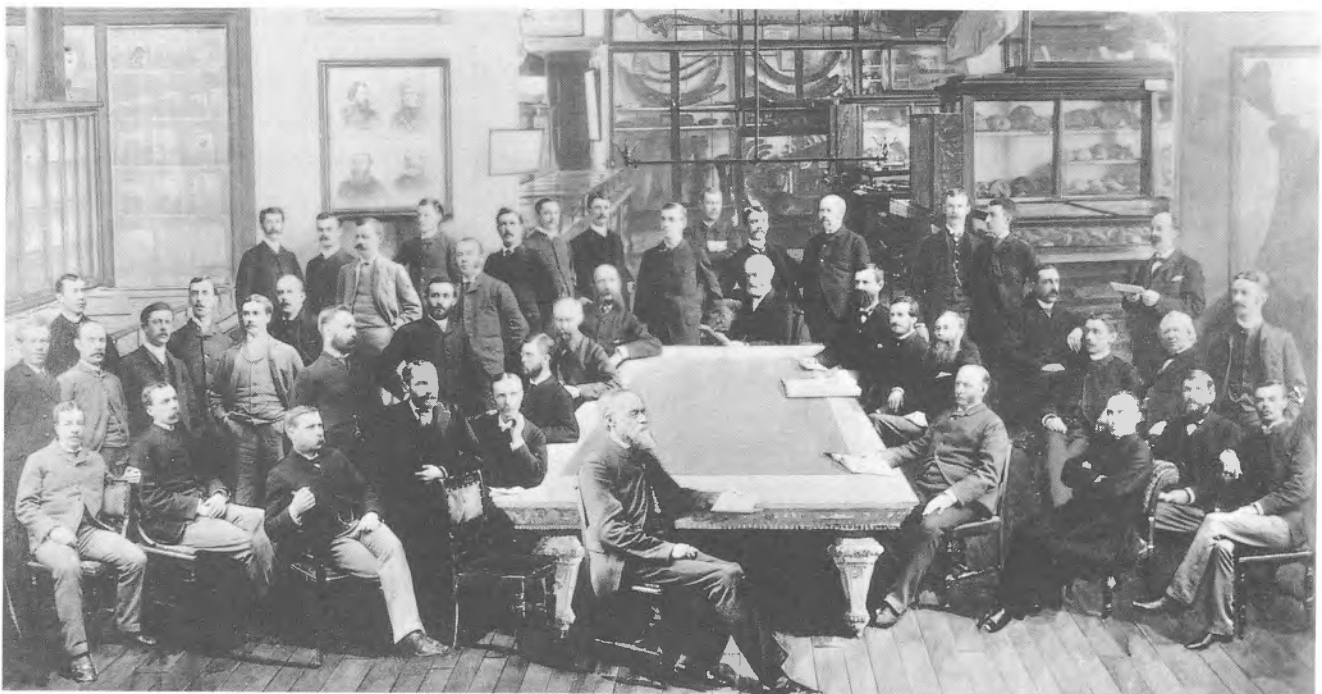
■ PACIFIC GEOSCIENCE CENTRE

March 27

GAC/GSC JOINT SYMPOSIUM

Theme: "The Geology of Canada"

Contact: Chris Yorath (604) 363-6418 ✱



Staff of the Geological Survey of Canada in 1888.

Staff members were individually photographed by Notman who then proceeded to cut out the figures from each photo, and then fitted them in place on an existing background, almost like a jigsaw puzzle. The setting is 541 Sussex Avenue, the Survey's first home in Ottawa, and the background is a combination of photography and artwork. For more information on this or other GSC photographs, please contact Susan Mrak at (613) 992-0640.

150th anniversary

Celebrating the Anniversary Day

On April 14, 1842, William Logan started work on a geological survey of the United Provinces of Upper and Lower Canada. The GSC has not looked back since - except, to celebrate its centennial anniversary in 1947 (it was delayed five years because of World War II) and this year, to mark the 150th anniversary.

In Ottawa, April 14 will be a day of ceremonies and tributes for staff. Of particular note is the official opening of Logan Hall with its new displays.

A public open house follows, April 15 - 16, and staff are welcome to bring their families to take part in the festivities. Local schools are being invited to the open house, and there will be lots of activities for children: panning for gold, field camps, a rock and fossil clinic, tours, mini-field trips, seismology and borehole geophysics demonstrations... and much, much more. Watch for details in Geode or call me at (613) 995-3084. ✱

Christy Vodden

News.....News.....News.....News.

FROM: QUÉBEC GEOSCIENCE CENTRE

■ Apart from geology and science, what is the hottest topic at the Québec Geoscience Centre? Babies of course! In the last 13 months, seven employees at the Centre have become first time parents and seven others have increased their family's size. This is quite a feat when you consider that the Centre has only fifty employees! The Québec Geoscience Centre was created in 1988 and includes scientific researchers from the GSC and professors from INRS-Géosciences.



One of the 12 babies of the year, **Anne-Sophie**, daughter of GSC scientific researcher, **Louise Corriveau** and INRS professor, **Normand Tassé**.

✱

FROM: CONTINENTAL GEOSCIENCE DIVISION

■ **Marc St-Onge**, **Simon Hanmer** and **John Percival** are the new executives of the Precambrian Division and editors of "Precambrian Times" of the Geological Association of Canada. "Precambrian Times" is a bimonthly newsletter to inform geologists in Precambrian studies about what is new and happening in geoscience, including relevant information from the GSC, universities and up-coming meetings. To contact "Precambrian Times" call (613) 992-9757 or Fax (613) 995-9273. ✱

FROM: INSTITUTE OF SEDIMENTARY & PETROLEUM GEOLOGY

■ As many of you probably already know, 1992 marks the GSC 150th anniversary as well as ISPG's 25th birthday. Accordingly, the Canadian Society of Petroleum Geologists has decided to acknowledge both events by dedicating the 1992 CSPG Calendar to the Geological Survey of Canada. The photographs in the calendar have been specially selected to highlight areas of geological investigations in which the GSC has made important contributions. Some photos come from the GSC photo library in Ottawa while others have been supplied by ISPG researchers such as **Gerry Reinson**, **Rudy Klassen** and former researcher **Tony Berger**. The calendar is available for \$5.35 (GST included) from the ISPG Director's office or CSPG offices in Calgary. ✱

*Occupational health and safety***Preparing for the Field Season**

This is the time of the year when many of our scientific staff are heavily involved with logistics in preparation for the field season. It is an opportune moment therefore to remind field party chiefs/supervisors of their accountability with respect to their health and safety responsibilities.

You are requested to reserve some time, either at your headquarters before leaving for the field, or in the field, before the commencement of operations to:

- a) Size up the hazards associated with field projects;
- b) Ensure that all employees are made aware of the hazards related to their jobs; and
- c) Ensure that all employees are given basic common sense instructions in safety measures including the distribution of applicable safety literature. This will help to minimize accidents and injuries.

Details on the availability of safety reference materials are outlined in a Field Safety Reference Catalogue which is available at either your Administrative or Sector Safety Office.

The Sector Safety Office can also provide information on courses to support your field safety program. For example :

- Firearm Training
- Bear Deterrence
- Chain Saw Safety
- Defensive Driving (recommended for students)
- WHMIS (recommended for new lab personnel)
- First Aid, CPR, Back Care

For further information, please contact me at (613) 995-8504, 601 Booth St., room 255. ✱

Doug Janney

*Meeting***Second GSC
Mineral
Colloquium**

The Ottawa Congress Centre was the site of a busy week for the members of the GSC's Minerals Program as they played host to over 500 people attending the Minerals Colloquium held January 22-24th following the GSC's Current Activities Forum, January 20-22, 1992.

This year's theme "Mineral Resources - Key to sustainable Development" was the focus for the 5 oral sessions which included: Exploration Research/EXTECH; Cordilleran Metallogeny; Resource Assessment; Appalachian Metallogeny and the Ocean Drilling Program. A full house heard J. Gill and H. Stockford of Aur Resources present the Lang Lecture on integrated exploration strategies and economic criteria in mine development. In addition to the lecture series, more than 110 scientific displays generated much attention.

If you were unable to attend this year's Colloquium and would like to get a Program with Abstracts or if you have any comments, please contact the Mineral Deposits Subdivision office at (613) 992-1600. ✱

Jon Scoates

New GSC Employees



Alan J. Hildebrand

Alan Hildebrand joined the Geophysics Division in the late December 1991 as a Research Scientist in the Application Section of the Aeromagnetism, Gravity and Geodynamics Subdivision.

Alan, a native of Fredericton, New Brunswick, got his BSc (Geology) from UNB. He then worked for several years in the mineral exploration industry with Cordilleran Engineering, Shell Canada and COMINCO.

His early interest in planetology, however, drew him back to formal study at the University of Arizona where he has just completed his doctoral studies. His thesis "Geochemistry and stratigraphy of the Cretaceous-Tertiary boundary impact ejecta" includes his identification of the Chicxulub structure in Yucatan, Mexico, as the most likely impact source.

Alan will continue research on 'boundary' problems, concentrating on Chicxulub and

the K/T boundary, in the GSC's project on "Crustal Genesis and Evolution".



Régis Dumont

Régis Dumont joined the Geophysics Division in January 1992 in the Aeromagnetism, Gravity and Geodynamics Subdivision.

Régis has an Honours BSc in Physics from l'Université de Moncton and an MSc in Geophysics from l'Université Laval. He spent five years as a software developer with le Ministère des Richesses Naturelles du Québec, in the Geophysics & Geochemistry Division. He then formed ECSI Géoscience, a Québec City software development based firm which grew to six consultants primarily concerned with data processing related to airborne geophysical surveys. With the merging of ECSI and SIAL Relevés Géophysiques to form SIAL Géoscience in 1989, Régis officially became vice-president of operations - management of data processing for all aspects of

engineering geophysics and exploration geochemistry.

His considerable experience in this field is now brought to the GSC's aeromagnetism program as manager of the Aeromagnetic Contract Surveys group.

Learning french

Le Terminologue

« User » et « Se servir de »

Faute: User

Correction: Se servir de

Observation: « User » en français, signifie **consommer, abîmer, détériorer par l'usure**, mais on lui donne souvent un usage anglicisant.

EXEMPLES

Incorrect:

- J'ai usé mon ordinateur aujourd'hui.

Correct:

- Je me suis servi de mon ordinateur aujourd'hui.
- J'ai tellement marché que j'ai usé mes chaussures.
- Les pneus de mon automobile sont usés.

Marie-Josée Goulet

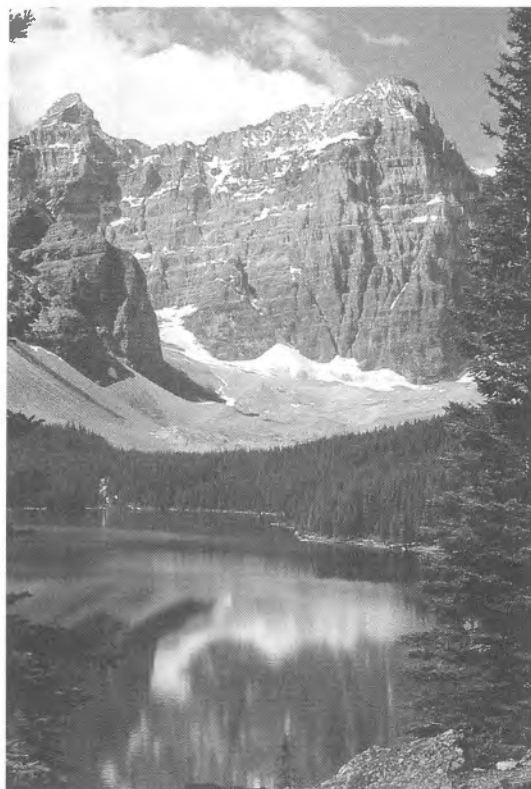
Winners of the 1991 GSC Photo Contest

First Prize in the Category " GCS at Work "



*Walking back to camp
along east shore
of Axel Heiberg Island, NWT
by Benoît Beauchamp.*

First Prize in the Category " Scenic Geology "



*Moraine Lake, Alberta
by Alan Morgan.*

A total of 161 photos have been entered in the third GSC Photo Contest.
The event will be held again this year and we hope that it will be a pleasure for you to participate !

Summeries From The Weekly Status Report For The Deputy Minister

GSC News in Brief

The 150th anniversary of the Survey started off in grand style on January 6, 1992 with the induction of our founder, **Sir William Logan**, to the Canadian Mining Hall of Fame. The ceremony was held at the Royal York Hotel in Toronto in front of an audience of 500 guests. **Yves Fortier**, the Survey's oldest living former Director, received the award on behalf of Logan and the GSC.

•

Regional mapping of Quaternary deposits by **Jean Veillette** in the Abitibi area of Québec, is turning out to be very useful to logging companies active in the region. The maps provide companies with key information on the locations of scarce sand and gravel deposits needed for construction of logging roads.

•

GSC will be conducting a lithological and coal evaluation study in central Alberta over the coal bed of the Mannville Group using GSC-developed technologies. These consist of a log analysis system which allows the determination of lithology and coal quality from digital well logs and of GEOMODEL, a GSC-expert system that produces three-dimensional lithological models for resources assesment.

The completed study will identify optimum drilling targets for co-operative work with the private sector.

•

Canada, through CIDA and the GSC, is one of the twelve advisory nations to the Committee for Co-ordination of Joint Prospecting for Mineral Resources in Asian Offshore Areas (CCOP). **Brian Bornhold** from PGC was the GSC representative to their last meeting in Bangkok. In recent years, the mandate of the organization has widened to include coastal zone management, Quaternary geology and environmental geology.

•

BHP Petroleum Canada geologists recently met with **Martin Fowler** at ISPG. BHP is interested in looking for oil and gas in areas of the world with known potential that they think have been under-explored. These areas include the basins in eastern Canada, western Newfoundland and areas of the Gulf of St. Lawrence.

•

Robert Macdonald and **Bruce Hart** of PGC, attended a meeting in January 1992 to discuss a proposal to map the Vancouver Harbour seafloor.

The proposal used the GSC's Halifax Harbour survey as a model and, includes geophysical surveying and a visual identification survey.

•

The Canadian Space Agency has asked **Richard Grieve**, Geophysics Division, to give a course on earth sciences as part of the training of the next six Canadians astronauts. Richard gave a similar course to previous Canadian astronauts, and was closely involved with NASA in the training of some of the original lunar landing teams.

•

During summer 1991, **Steve Blasco** of AGC was Chief Scientist on a six-week expedition to study the wreckage of the Titanic on the ocean floor some 600 km southeast of Newfoundland. The expedition was filmed using Canadian developed IMAX technology. Steve admitted that the expedition caused him to revise his theories about the deep ocean being isolated and inert. The Titanic, he added, forces us to re-think the consequences of deep-ocean dumping. ✱