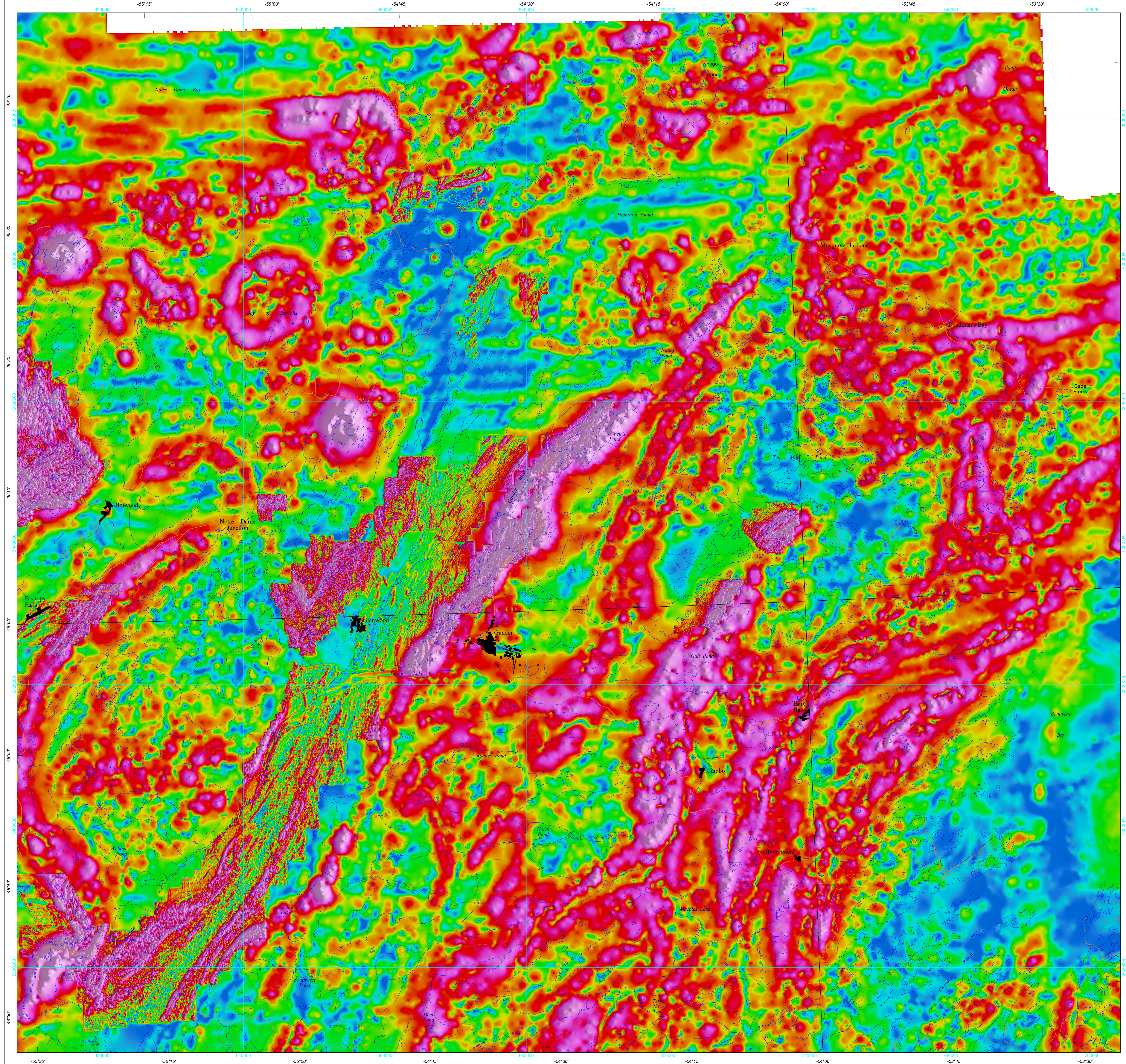


ANALYTIC SIGNAL OF THE MAGNETIC FIELD

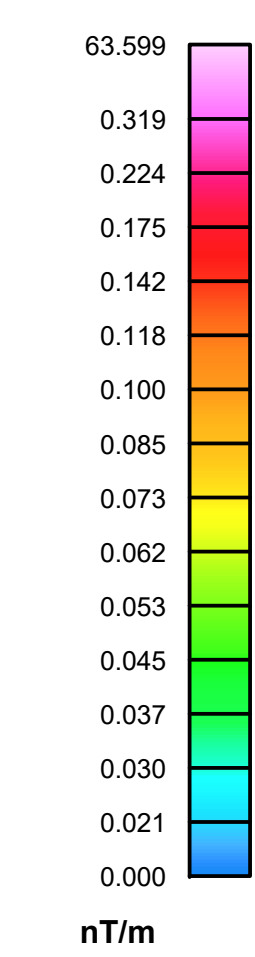
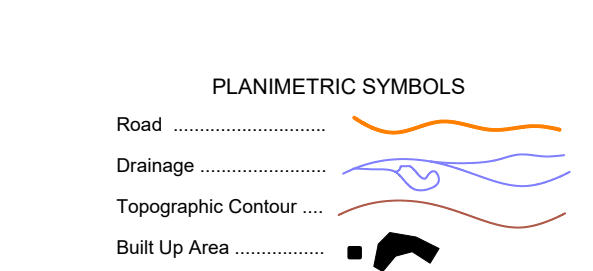
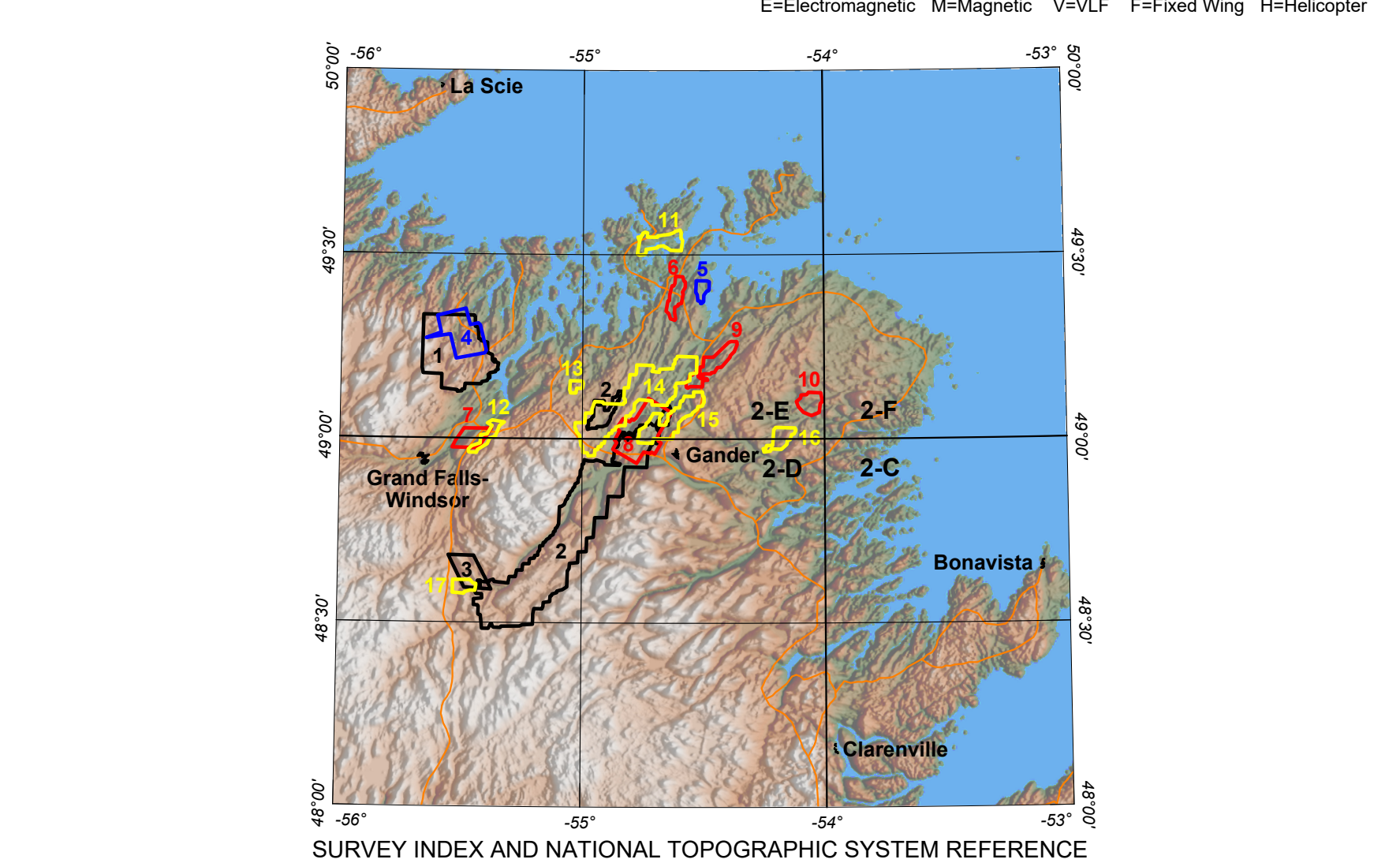


Descriptive Notes
Regional aeromagnetic data used in this compilation were acquired from the Geological Survey of Canada Geophysical Data Repository. Digital data from high-resolution surveys flown by mineral exploration companies were made available through the Geoscience Atlas, Newfoundland and Labrador Department of Industry, Energy and Technology. Results from all high-resolution surveys were available to the regional data user through the Geoscience Atlas. The analytic signal is useful in locating the edges of magnetic source bodies and is defined as the square root of the sum of the squares of the derivatives for the magnetic field in the x, y, and z directions. Apparent mismatches between survey blocks are a result of differing line spacing, flight altitudes and equipment platforms. For more detailed information regarding this data presentation, please refer to the online open file documentation.

This publication is available for free download through GEOCAN at <https://geocan.nrcan.gc.ca/>. Corresponding digital gridded data can be downloaded from the Geological Survey of Canada's Repository for Geophysical Data at <https://open.canada.ca/en/geoscience>. For more information, please contact the Geophysical Data Centre, Geological Survey of Canada, 601 Booth Street, Ottawa, Ontario K1A 0E8. Telephone 613-995-5326, email: dgpc@nrcan.gc.ca. Digital data and further information regarding detailed Newfoundland surveys can be accessed or downloaded through the Geoscience Atlas, at <https://geoscience.nrcan.gc.ca/>.

The following table and index map provide locational and source information for the industry surveys that were merged in this project. Individual surveys on the index map can be identified by their corresponding colour and number in the table below.

Index Number	Survey ID	Survey Area	Contractor	Client	Year	Line Spacing (m)	Mag Sensor Height (m)	Survey Type	Acquired
1	DN12330	Point Leamington	Fugro Airborne Surveys	Callibre Mining Corp.; TLC Ventures Corp.; Paragon Minerals Corp.	2007	200	75	E-M	H
2	DN24569	I - Gander Lake South	CGG / Fugro Airborne Surveys	Palisade Resources; Kinross Resources; New Found Gold Corp.	2017	200	35	E-M	H
3	DN07724	Rolling	Goldak Exploration Technology Ltd.	Albus Resources Inc.	2002	200	80	M	F
4	DN05455	Levis Lake	Geoteknow Digital	Rubicon Minerals Corp.	1999	150	73	E-M	F
5	DN05241	Tims Cove - GBA	Aero Surveys Inc.	Copper Hill Resources Inc.	1997	150	30	E-M	H
6	DN08784	Duder Lake - Bloc4	Sial Geosciences Inc.	Celtic Minerals Ltd.	1996	100	45	E-M-V	H
7	DN08413	Moosehead	Goldak Exploration Technology Ltd.	Albus Resources Inc.	2002	100	80	M	F
8	DN15698	Appleton/JP Linear	Goldak Airborne Surveys	Northern Sky Res., True Claim Res., KASK Synd., ASK Propp, Kinross Res., Canadian Zinc Corp.	2012	100	80	M	F
9	DN18072	Cripple Creek	Geotech Ltd.	Capstone Mining Corporation; 0840559 B.C. Limited; Fancy, D.; LeDrew, D.	2012	100/50	52	E-M	H
10	DN08782	Wing Pond - Bloc2	Sial Geosciences Inc.	Celtic Minerals Ltd.	1996	100	45	E-M-V	H
	DN10981	New World Island	AeroQuest Ltd.	Rubicon Minerals Corp.	2006	75	30	E-M	H
	DN08239	A. Mosophom	Fugro Airborne Surveys	Rubicon Minerals Corp.	2002	50	30	M	H
	DN08262	E - Peyton Satellite	Fugro Airborne Surveys	Rubicon Minerals Corp.	2002	50	30	M	H
	DN08606	H - Glenwood Break	Fugro Airborne Surveys	Rubicon Minerals Corp.	2003	75	30	E-M	H
	DN08607	I - Glenwood Area	Fugro Airborne Surveys	Rubicon Minerals Corp.	2003	75	30	E-M	H
	DN08350	G - Wing Pond	Fugro Airborne Surveys	Rubicon Minerals Corp.	2003	50	30	M	H
	DN08292	B - Beaver	Fugro Airborne Surveys	Rubicon Minerals Corp.	2003	50	30	M	H



Map Series Summary
GSC Open File 8844: Regional total magnetic field
GSC Open File 8845: First vertical derivative of the magnetic field
GSC Open File 8846: Tilt angle of the magnetic field
GSC Open File 8847: Analytic signal of the magnetic field

Airborne Geophysical Data Compilation north-central Newfoundland

OPEN FILE DOSSIER PUBLIC
8847
GEOLOGICAL SURVEY OF CANADA / GÉOLOGIQUE DU QUÉBEC ET EN LABRADOR
2021

Publications in this series have been edited; they are published as authored by the author.
Les publications de cette série ont été éditées; elles sont publiées telles que publiées par l'auteur.

Newfoundland and Labrador
Department of Industry, Energy and Technology
Geological Survey Open File
NFLD/3396, Map 2021-12

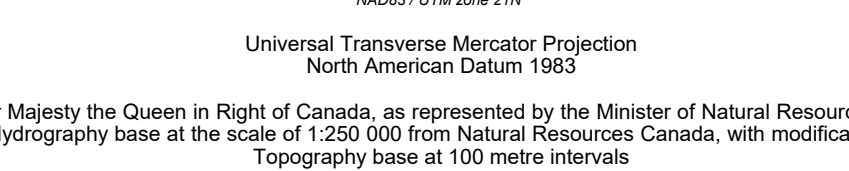
Recommended citation
Oneschuk, D. and Kilfoil, G., 2021. Analytic Signal of the Magnetic Field, Airborne Geophysical Data Compilation, north-central Newfoundland, Newfoundland and Labrador, parts of NTS 2-C, D, E and F; Geological Survey of Canada, Open File 8847; Newfoundland and Labrador Department of Industry, Energy and Technology, Geological Survey Open File NFLD/3396, Map 2021-12; Scale 1:200 000. <https://doi.org/10.4095/252620>

GEOLOGICAL SURVEY OF CANADA OPEN FILE 8847
NEWFOUNDLAND AND LABRADOR DEPARTMENT OF INDUSTRY, ENERGY AND TECHNOLOGY
GEOLOGICAL SURVEY OPEN FILE NFLD/3396, MAP 2021-12

ANALYTIC SIGNAL OF THE MAGNETIC FIELD

AIRBORNE GEOPHYSICAL DATA COMPILATION
NORTH-CENTRAL NEWFOUNDLAND
NEWFOUNDLAND AND LABRADOR
Parts of NTS 2-C, D, E and F

Scale 1:200 000



Authors: D. Oneschuk and G. Kilfoil
Data compilation and digital cartography by D. Oneschuk, Geological Survey of Canada
Permanent link: <https://doi.org/10.4095/252620>
The authors would like to thank Ian Hönninger (GSC) for initiating this project and for his encouragement and support throughout its progression, and Mark Kilgallon for his helpful comments and suggestions to improve the maps.

This Open File is a contribution to the Targeted Geoscience Initiative (TGI) program of the Land and Minerals Sector, Natural Resources Canada.

