

Geo-mapping for Energy and Minerals program: activities in the Sverdrup Basin, Canadian Arctic Islands

T. Hadlari^{1*}

Hadlari, T., 2022. *Geo-mapping for Energy and Minerals program: activities in the Sverdrup Basin, Canadian Arctic Islands*; in *Sedimentary basins of northern Canada: contributions to a 1000 Ma geological journey and insight on resource potential*, (ed.) D. Lavoie and K. Dewing; Geological Survey of Canada, Bulletin 609, p. 215–235. <https://doi.org/10.4095/326088>

Abstract: Advancements in the establishment of the geological framework of the Sverdrup Basin resulting from the Geo-mapping for Energy and Minerals program can be grouped under the main topics of tectonostratigraphy, crosslinking of biostratigraphy and chronostratigraphy, integration of igneous records with newly refined stratigraphy, and effects of global climatic environments on hydrocarbon source rocks in geological time. New discoveries of volcanic ash beds throughout much of the Triassic stratigraphic section required new tectonic interpretations involving a magmatic arc northwest of the basin that was likely involved in the opening of the Amerasia Basin. Modern approaches to biostratigraphy calibrated by radiometric age dating of volcanic ash beds made global correlations to chronostratigraphic frameworks and tectonic models possible. Correlation of the stratigraphy and recent geochronology of the High Arctic large igneous province (HALIP) places the main pulse of mafic magmatism in a postrift setting. Finally, the depositional setting of source rocks in the Sverdrup Basin is explained in terms of oceanographic factors that are related to the global environment. All of these advancements, including hints of undefined and relatively young structural events, lead to the conclusion that the hydrocarbon potential of the Sverdrup Basin has not been fully tested by historical exploration drilling.

Résumé : Les progrès réalisés dans la définition du cadre géologique du bassin de Sverdrup grâce au programme Géocartographie de l'énergie et des minéraux peuvent être regroupés sous les principaux thèmes suivants : la tectonostratigraphie; les liens croisés entre la biostratigraphie et la chronostratigraphie; l'intégration des archives ignées et de la stratigraphie nouvellement précisée; et les effets des environnements climatiques globaux sur les roches mères d'hydrocarbures au cours des temps géologiques. La découverte de nouvelles couches de cendres volcaniques dans une grande partie de la coupe stratigraphique du Trias a nécessité la formulation de nouvelles interprétations tectoniques mettant en jeu un arc magmatique au nord-ouest du bassin, lequel a probablement été impliqué dans l'ouverture du bassin amérasien. Les approches modernes de la biostratigraphie étalonnée par la datation radiométrique des couches de cendres volcaniques permettent des corrélations des cadres chronostratigraphiques et des modèles tectoniques à l'échelle globale. La corrélation de la stratigraphie et de la géochronologie récente de la grande province ignée du Haut-Arctique permet de situer la principale impulsion d'activité magmatique mafique dans un contexte post-rift. Enfin, le milieu de dépôt des roches mères dans le bassin de Sverdrup peut être expliqué à l'aide de facteurs océanographiques liés à l'environnement global. Tous ces progrès, y compris des indices de l'existence d'événements structuraux non définis et relativement récents, permettent de conclure que le potentiel en hydrocarbures du bassin de Sverdrup n'a pas été entièrement vérifié par les anciens forages d'exploration.

¹Geological Survey of Canada, 3303-33rd Street N.W., Calgary, Alberta T2L 2A7

*Corresponding author: T. Hadlari (email: thomas.hadlari@nrcan-rncan.gc.ca)

INTRODUCTION

The Geo-mapping for Energy and Minerals (GEM) Western Arctic project was tasked with re-examining the geological framework for areas of the Canadian continental margin bordering the Arctic Ocean. The fundamental stratigraphy of the Sverdrup Basin was established by previous generations of Geological Survey of Canada (GSC) scientists over many decades prior to the GEM program. These GSC scientists produced a rigorous description, correlation, and fossil-based age definition of stratigraphic units. The GSC was uniquely equipped with the requisite expertise to undertake GEM-supported research and developed new fields of study in the process.

An overarching theme of the GEM program in studying the Sverdrup Basin was to allow researchers to apply modern laboratory techniques and advancements in geological theory, but this could only be achieved by undertaking new targeted field observations and rock sampling. Sedimentary geochemistry, radiometric geochronology, micropaleontology, and tectonostratigraphy were integrated to provide an up-to-date paleoenvironmental and tectonic framework for the Sverdrup Basin, from initial subsidence in the Carboniferous to uplift in the Cenozoic. The elements of this framework were combined to examine how the Arctic Ocean formed by continental drift.

This paper does not present new research. Instead, it describes the contribution of the GEM program to advancing the understanding of Sverdrup Basin's geological framework. The bibliography provided in Appendix A is a catalogue of publications on the Sverdrup Basin that have been produced as part of the GEM program.

MODERN TECTONIC FRAMEWORK

Prior to GEM, there was no direct evidence of a complex geodynamic setting for the Sverdrup Basin; therefore, interpretations about the basin's origin quite necessarily involved postorogenic and passive margin processes. It was mainly detrital zircon U-Pb age data coupled with new field observations, more specifically recognition of volcanic ash beds in the Triassic section, that required updated tectonic concepts. These ideas led to a new understanding of the setting for the Sverdrup Basin in terms of continental configuration and, more importantly, explained why the Sverdrup Basin formed. In general, the new model places the basin behind a continental subduction zone, in a retro-arc position (Fig. 1), and the various stages of the basin are attributed to subduction dynamics, ultimately resulting in rifting, continental breakup, and formation of the Arctic Ocean as a back-arc basin (Fig. 2, 3; Hadlari et al., 2016, 2018; Midwinter et al., 2016; Alonso-Torres et al., 2018).

MULTIDISCIPLINARY APPROACHES TO CRETACEOUS STRATIGRAPHY

Significant updates to the stratigraphy of the Sverdrup Basin were achieved using an integrated multiproxy approach. New quantitative techniques were developed for the next-generation analysis of biostratigraphic data from the Sverdrup Basin; for example, the Hassel Formation in the Sverdrup Basin was determined to be time equivalent to the putative Hassel Formation in the Eclipse Trough (Bylot Island) on

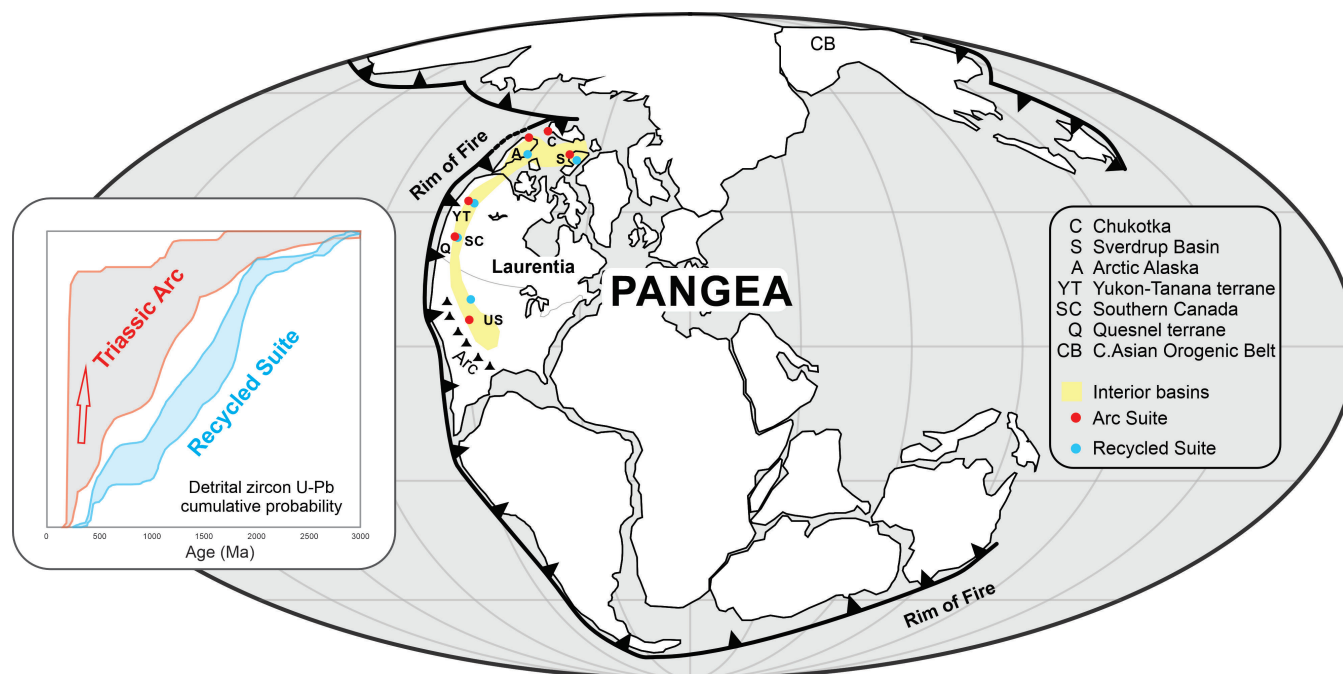


Figure 1. Global tectonic reconstruction of Pangea from Hadlari et al. (2018).

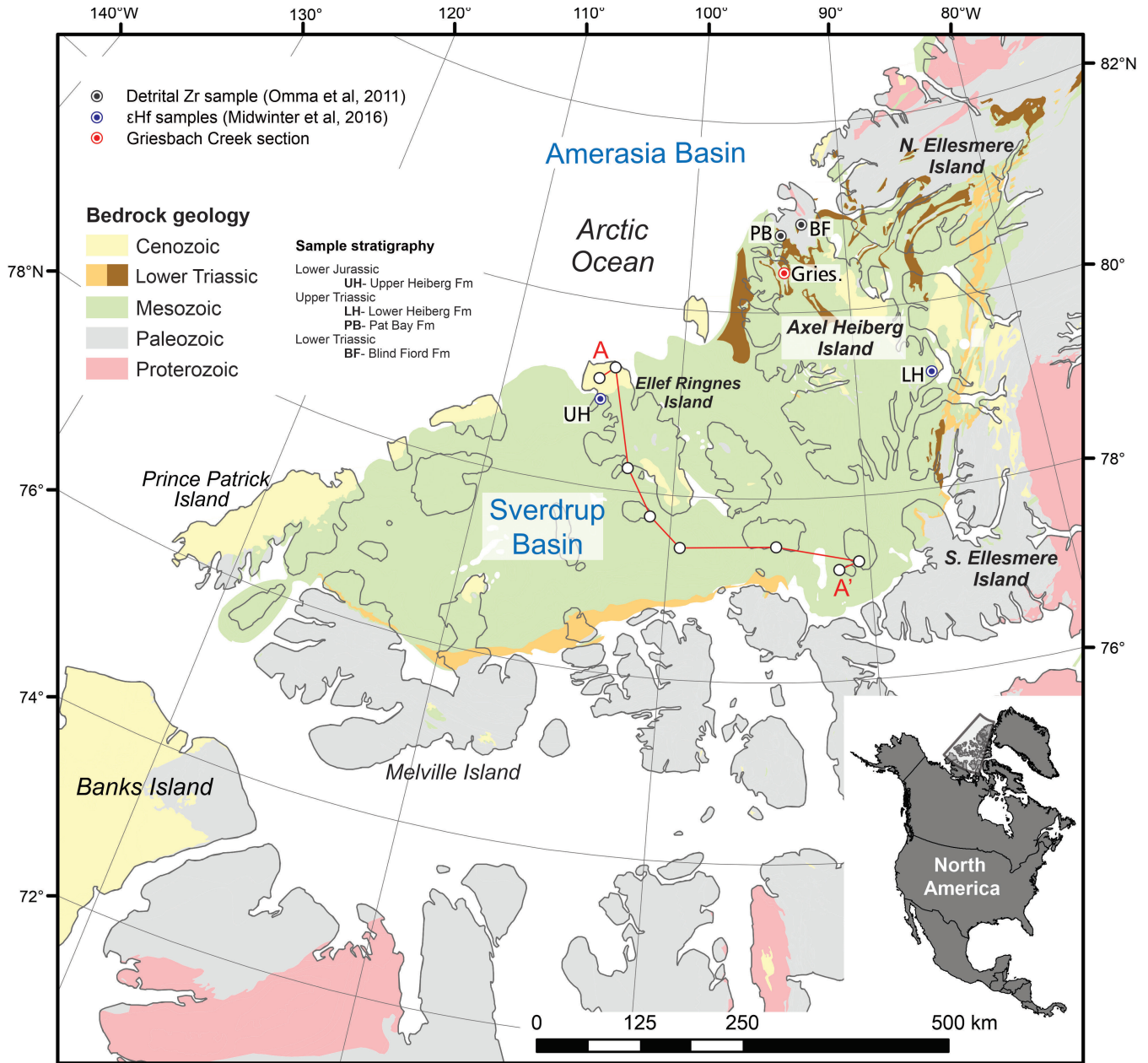


Figure 2. Map of the Sverdrup Basin from Hadlari et al. (2018).

the basis of a statistical comparison of fossil pollen assemblages (J.M. Galloway et al., 2012). In another example, assemblage-level biostratigraphic signatures for Upper Jurassic–Lower Cretaceous strata were developed using quantitative palynology (Fig. 4; J.M. Galloway et al., 2013). Demonstration of a sub-Hauterivian unconformity in the basin was useful for tectonic frameworks (J.M. Galloway et al., 2013, 2015).

Figures 5 and 6 are examples showing the integration of measured sections, paleontology, chemostratigraphy, and geochronology. These sections were previously measured and studied, but new field-sampling strategies for modern

laboratory techniques yielded valuable results, mainly because volcanism spans a much wider time range than previously documented (Herrle et al., 2015; Davis et al., 2017).

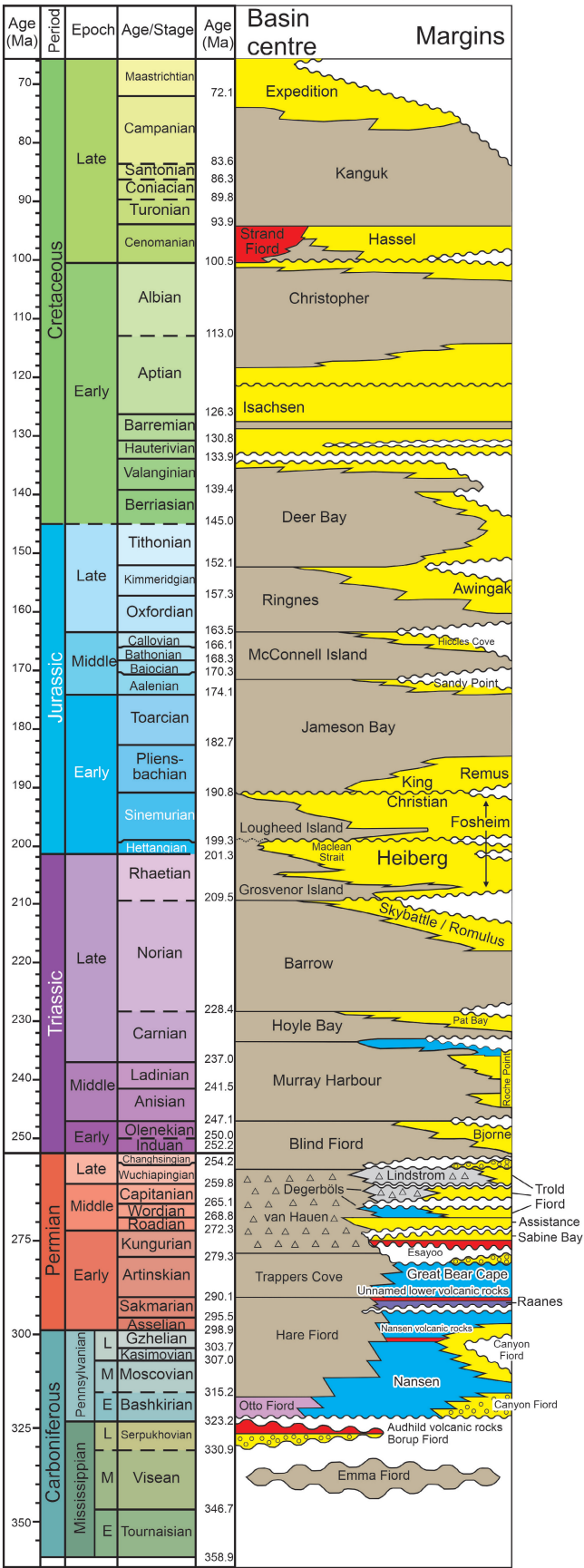
The integrated approach also yielded results from volcanic stratigraphy because some rocks previously mapped as volcanic flows are actually sills. Flows are the same age as interbedded sedimentary strata, whereas sills could be emplaced at any time after sedimentary deposition; therefore, distinguishing between flows and sills is of critical importance for assessing paleomagnetic and geochronological data. New insight into the chronostratigraphy of the Sverdrup Basin, implications for normal and reverse

Legend

- Sandstone
- Mudstone-siltstone
- Evaporite
- Nonmarine shale
- Limestone dominant
- Volcanic
- Chert
- Mixed clastic-carbonate
- HALIP High Arctic large igneous province

Lithostratigraphy

Tectonostratigraphy



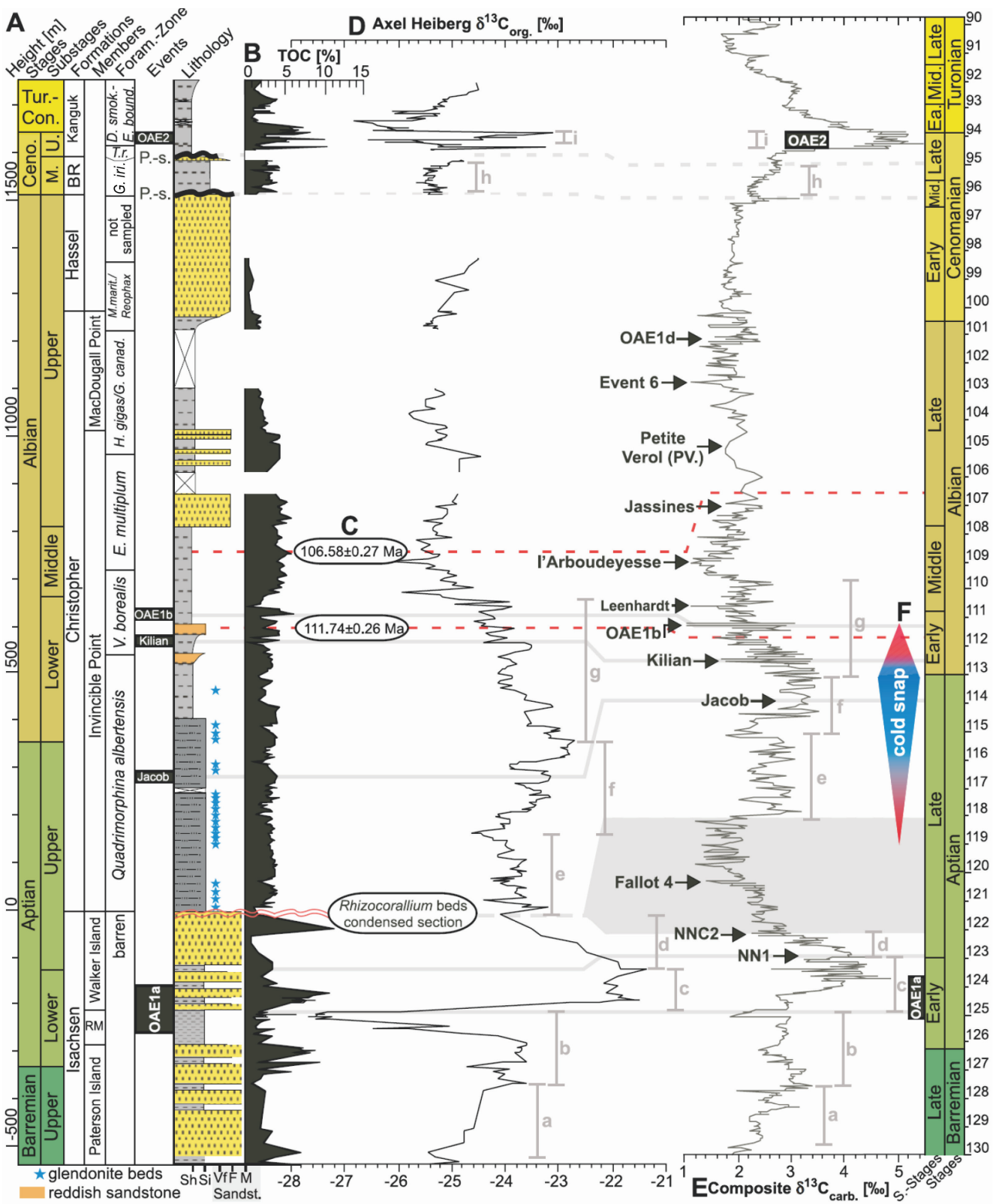


Figure 5. Early Cretaceous stratigraphy of Axel Heiberg Island, Nunavut, calibrated using geochronology (figure and caption from Herrle et al., 2015). A: Stratigraphy, biostratigraphy, lithostratigraphy, paleoceanographic events, and lithology. B: Total organic carbon (TOC, %). C: U-Pb geochronology ages (red dashed lines indicate absolute age tie points). D: Organic carbon isotopes. E: Carbonate carbon isotope composite age-calibrated curve (from Gradstein et al., 2012) and major mid-Cretaceous paleoceanographic events. F: Position of the late Aptian to early Albian cold snap based on TEX_{86} sea-surface temperatures from the Mazagan Plateau, France (from McAnena et al., 2013). Correlative intervals based on $\delta^{13}\text{C}$ fluctuations are indicated by segments a–i. Grey areas and red wavy lines represent condensed intervals (*Rhizocorallium* beds). Black wavy lines represent disconformities (paleosols) of middle and upper Cenomanian. Benthic foraminifera stratigraphy after Schröder-Adams et al. (2014). Blue stars show glendonite beds; grey lines represent correlative paleoceanographic events. RM = Rondon Member; BR = Bastion Ridge; OAE = oceanic anoxic event; P.s. = paleosol; Sh = shale; Si = siltstone; Vf = very fine-grained sandstone; F = fine-grained sandstone; M = medium-grained sandstone; *V. borealis* = *Verneuilinoides borealis*; *E. multiplum* = *Evolutinella multiplum*; *H. gigas* = *Haplophragmoides gigas*; *G. canad.* = *Gaudryina canadensis*; *M. mant.* = *Miliammina manitobensis*; *G. iri.* = *Gaudryina irinensis*; *T. r.* = *Trochammina rutherfordi*; *D. smok.* = *Dorothia smokyensis*; *E. bound.* = *Evolutinella boundaryensis*.

paleomagnetic polarity chrons, and timing of magmatic activity in the High Arctic large igneous province (HALIP) were discussed, clarified, and revised in Evenchick et al. (2019).

GLOBAL CLIMATE, LOCAL ENVIRONMENT, AND HYDROCARBON SOURCE ROCKS

A series of GEM papers has shown the impact of mercury and fly ash during the latest Permian extinction event (Grasby et al., 2011, 2015a, b, 2017). These toxic byproducts were released from burning coal as magma from the Siberian large igneous province rose through sedimentary strata (Fig. 7). The discovery of fly ash in the Canadian Arctic was a serendipitous discovery of GEM research, when organic-rich upper Permian rocks were examined for their hydrocarbon source-rock potential.

The GEM field-based studies demonstrated that the Early Triassic was severely nutrient limited due to global hot-house conditions causing a stratified ocean (Fig. 8), which limited source-rock formation. Return to normal temperatures led to high marine productivity and the formation of major circum-Arctic petroleum source rocks (Grasby et al., 2013, 2016).

Palynological analysis revealed a cold snap of late Valanginian age in the Canadian High Arctic that resulted in vegetation composition changes (J.M. Galloway et al., 2015). Analysis results also demonstrated that during the overall Cretaceous warm period, cold snaps affected biological productivity in circum-Arctic regions (Grasby et al., 2017).

HIGH ARCTIC LARGE IGNEOUS PROVINCE (HALIP)

The HALIP was probably initiated ca. 128 to 126 Ma by a plume that arrived after the Arctic Ocean had started to form, with the main initial pulse of magmatism occurring at 124 to 120 Ma (Fig. 9). Results from field mapping identified new volcanic horizons and provided more robust age constraints, which showed that the record of igneous activity in the HALIP was more protracted than previously thought (Evenchick et al., 2015; Herrle et al., 2015). Following the first pulse, magmatism persisted throughout the Late Cretaceous to ca. 80 Ma.

The integration of biostratigraphy and geochronology techniques has allowed fossil horizons to be calibrated in terms of radiometric ages (Herrle et al. 2015; Davis et al., 2017). Igneous geochronology places the magmatic events in time (Evenchick et al., 2015; Dockman et al., 2018). Relating stratigraphic ages and magmatic ages allowed the correlation of events in the sedimentary basin with the magmatic record of HALIP. Examination of this new tectonic framework revealed that the HALIP postdates both rifting and the breakup event, when parts of Russia and Alaska started to drift away from the northwestern Canadian Arctic margin.

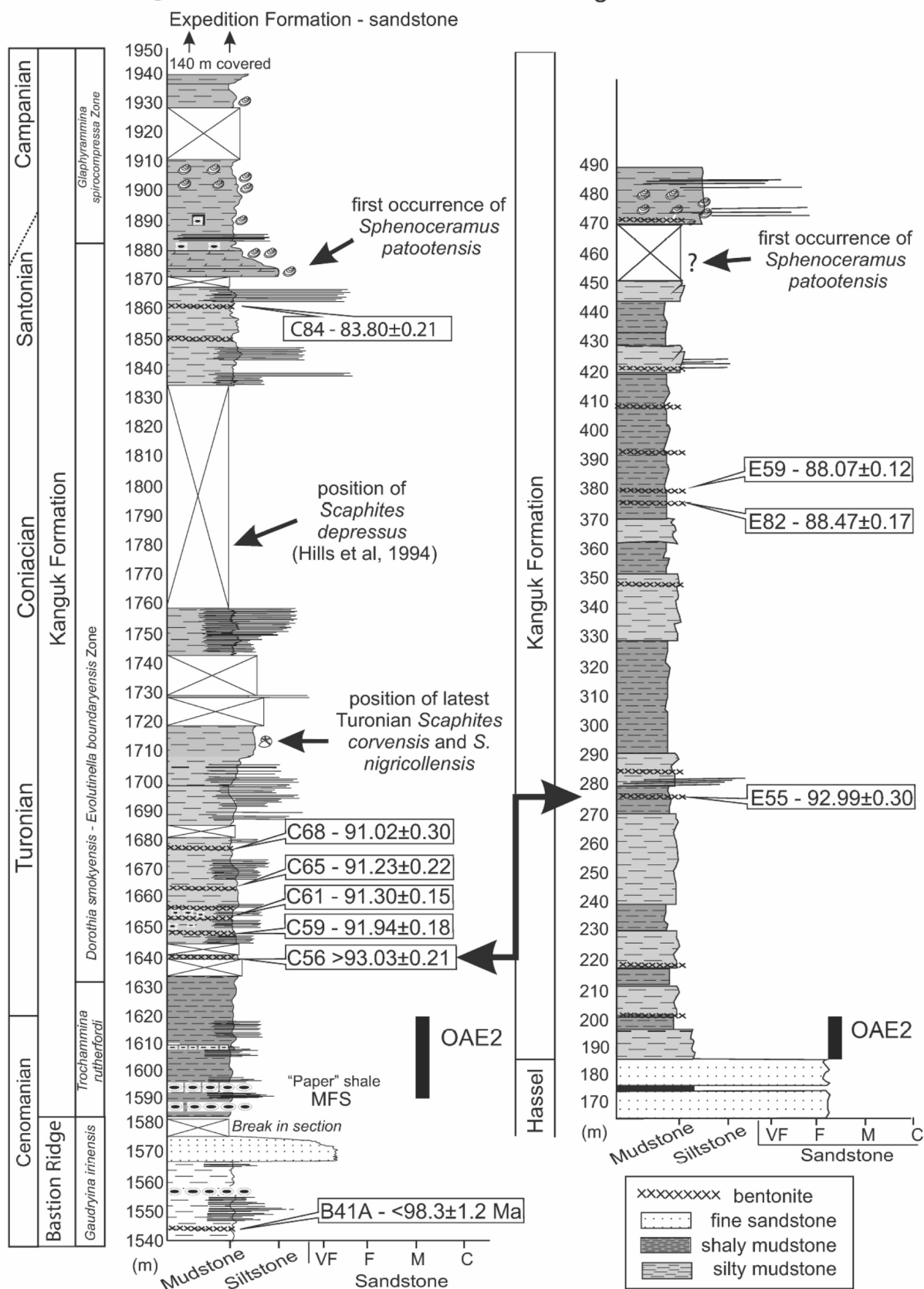
ORE AND PETROLEUM SYSTEMS

Many GEM products have important implications for resource potential, from the metallogeny of HALIP rocks (Jowitt et al., 2014; Saumur et al., 2016) to the timing of

Figure 6. Late Cretaceous stratigraphy of Axel Heiberg and Ellef Ringnes islands, calibrated using geochronology (from Davis et al., 2017). MFS = maximum flooding surface; OAE = oceanic anoxic event; Vf = very fine-grained sandstone; F = fine-grained sandstone; M = medium-grained sandstone; C = coarse-grained sandstone.

Axel Heiberg Island - Glacier Fiord

Ellef Ringnes Island - Hoodoo Dome



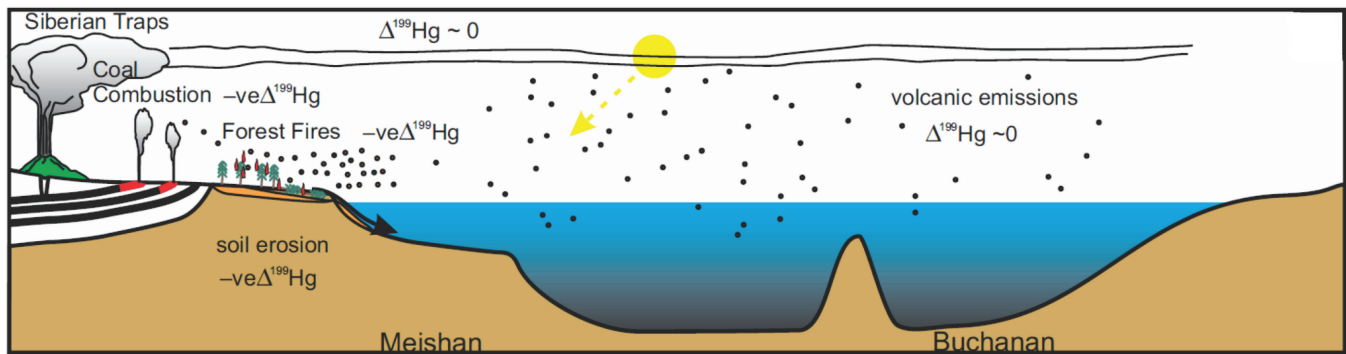


Figure 7. Mercury flux in late Permian marine environments (from Grasby et al., 2017). Negative (–ve) and positive (+ve) $\Delta^{199}\text{Hg}$ source signatures are indicated. Pangea sections: Meishan, China; and Buchanan Lake, Sverdrup Basin, Canadian Arctic Archipelago.

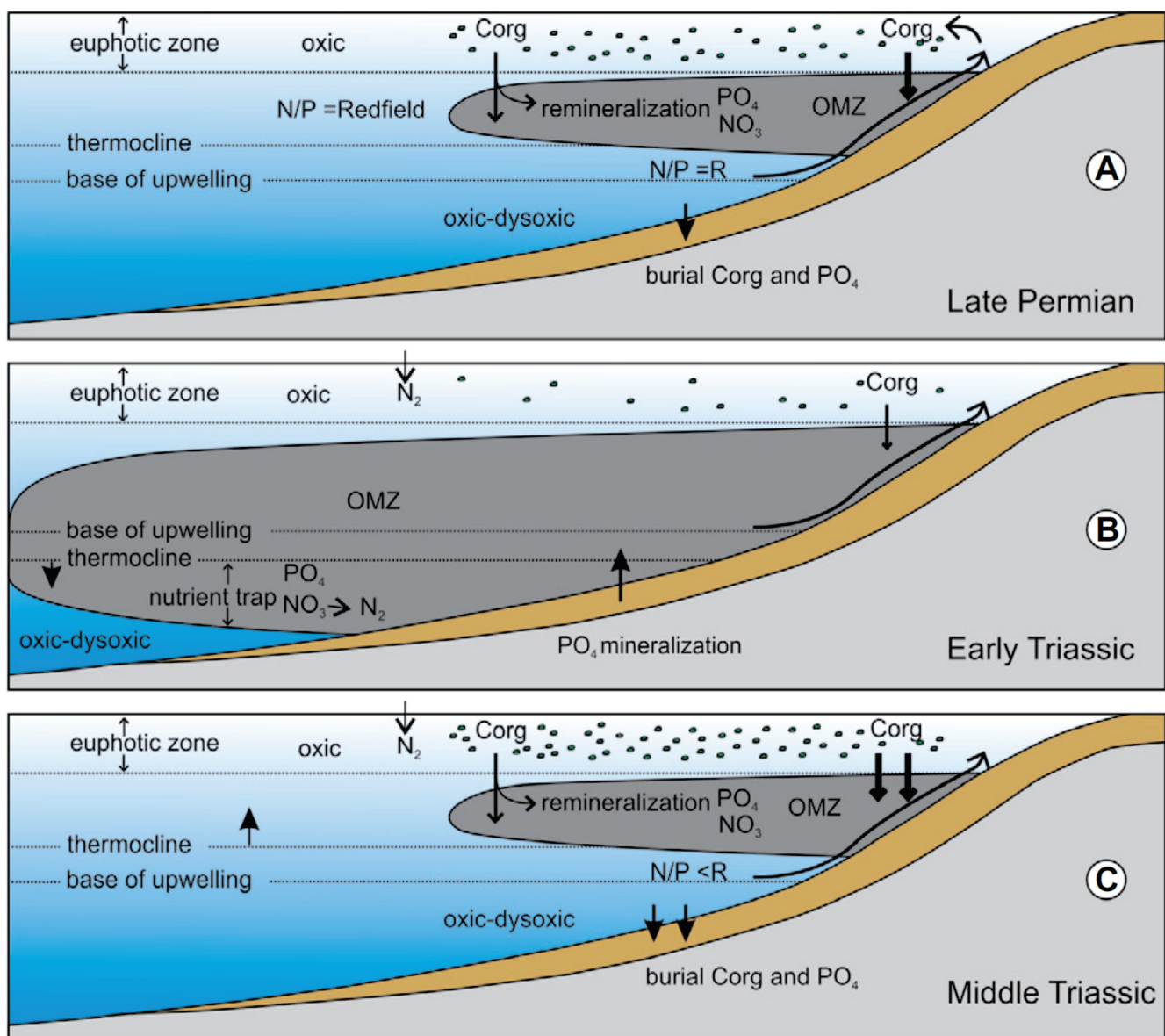


Figure 8. History of upwelling along northwestern margin of Pangea (from Grasby et al., 2016). **a)** Late Permian; **b)** Early Triassic; **c)** Middle Triassic. N/P = nitrogen/potassium; R = Redfield ratio; OMZ = oxygen minimum zone.

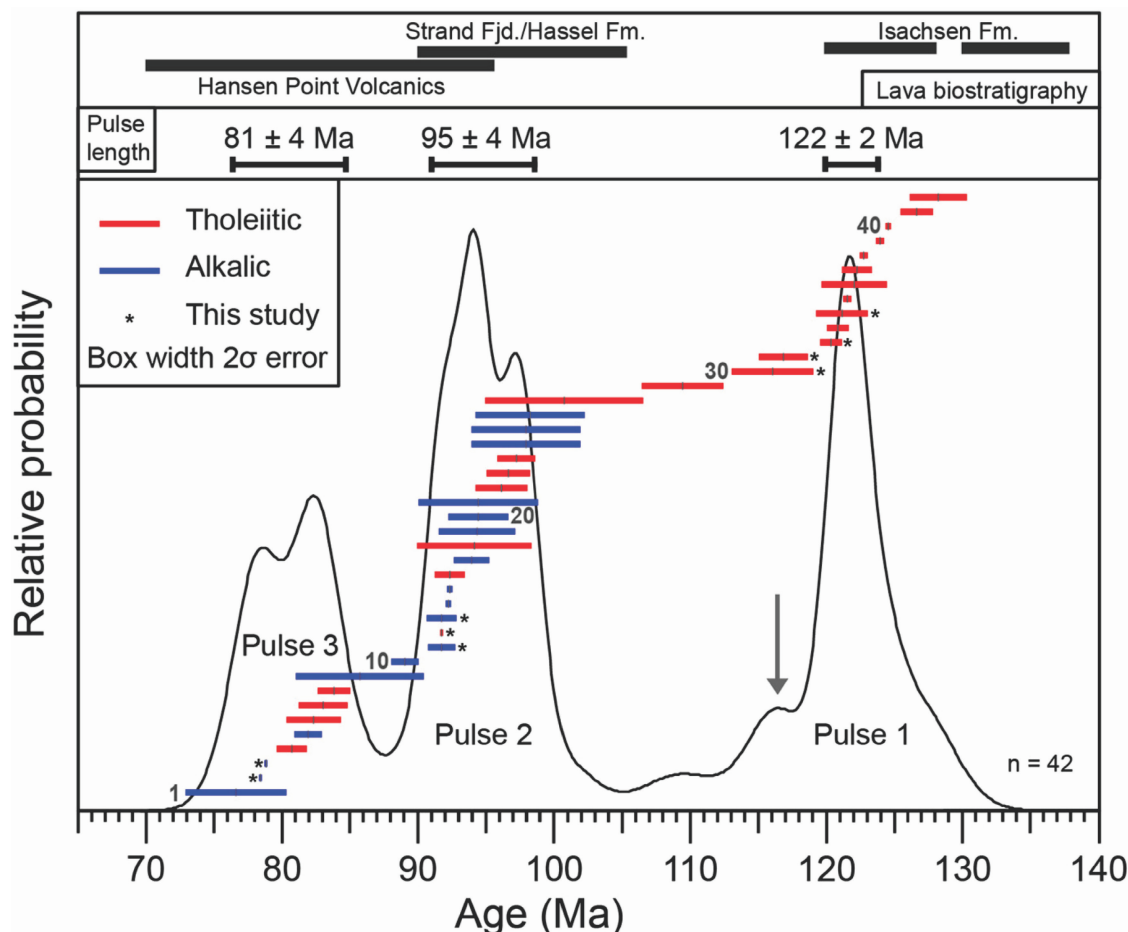


Figure 9. Magmatic pulses of the High Arctic large igneous province (from Dockman et al., 2018).

salt movement and formation of hydrocarbon traps (e.g. J.M. Galloway et al., 2013; Dewing et al., 2016a). Some excellent examples of GEM products that are directly related to resource potential are highlighted below.

A basinwide summary of the thermal maturity of the Middle Triassic source-rock interval(s) in the Schei Point Group indicates that Middle Triassic source rocks in the western Sverdrup Basin are in the oil, rather than gas, window (Dewing and Obermajer, 2011). This implies that the large natural gas discoveries in the western Sverdrup Basin had a deeper origin.

Canada's largest conventional natural gas field at Drake Point, on Melville Island, contains 5.3 TCF of gas trapped in an anticline (Fig. 10; Dewing et al., 2016b). New results show that the anticline formed in two phases: the first phase was a previously unrecognized folding event at ca. 100 Ma; the second occurred during the Eurekan Orogeny at ca. 55 Ma. The geochemical characteristics of the gas at Drake Point indicate that the gas migrated from a source rock dominated by type III (terrestrial) kerogen. This implies a source deeper than the Middle Triassic strata, possibly as deep as the Permian van Hauen Formation. If gas was generated from

deep source rocks, then many traps in the Sverdrup Basin were not fully assessed during exploration drilling carried out in the 1970s to 1980s.

Examination of the Polaris mine explains the location of the Polaris Zn-Pb deposit in terms of fault reactivation (Reid et al., 2013a). An older (Early Devonian) set of reverse faults was reactivated in Late Devonian time as strike-slip faults (Fig. 11). This created local pull-apart basins that focused fluid flow. This model helps predict areas of highest mineral-exploration potential that may have a similar geological setting.

SUPPORT FOR UNIVERSITY RESEARCH

By supporting research at universities, the GEM program was able to expand the scope of Sverdrup Basin activities by adding external expertise and laboratory capabilities to complement core GSC activities. Professors at various universities led research groups: B. Beauchamp at the University of Calgary (Tullius et al., 2014; Anfinson

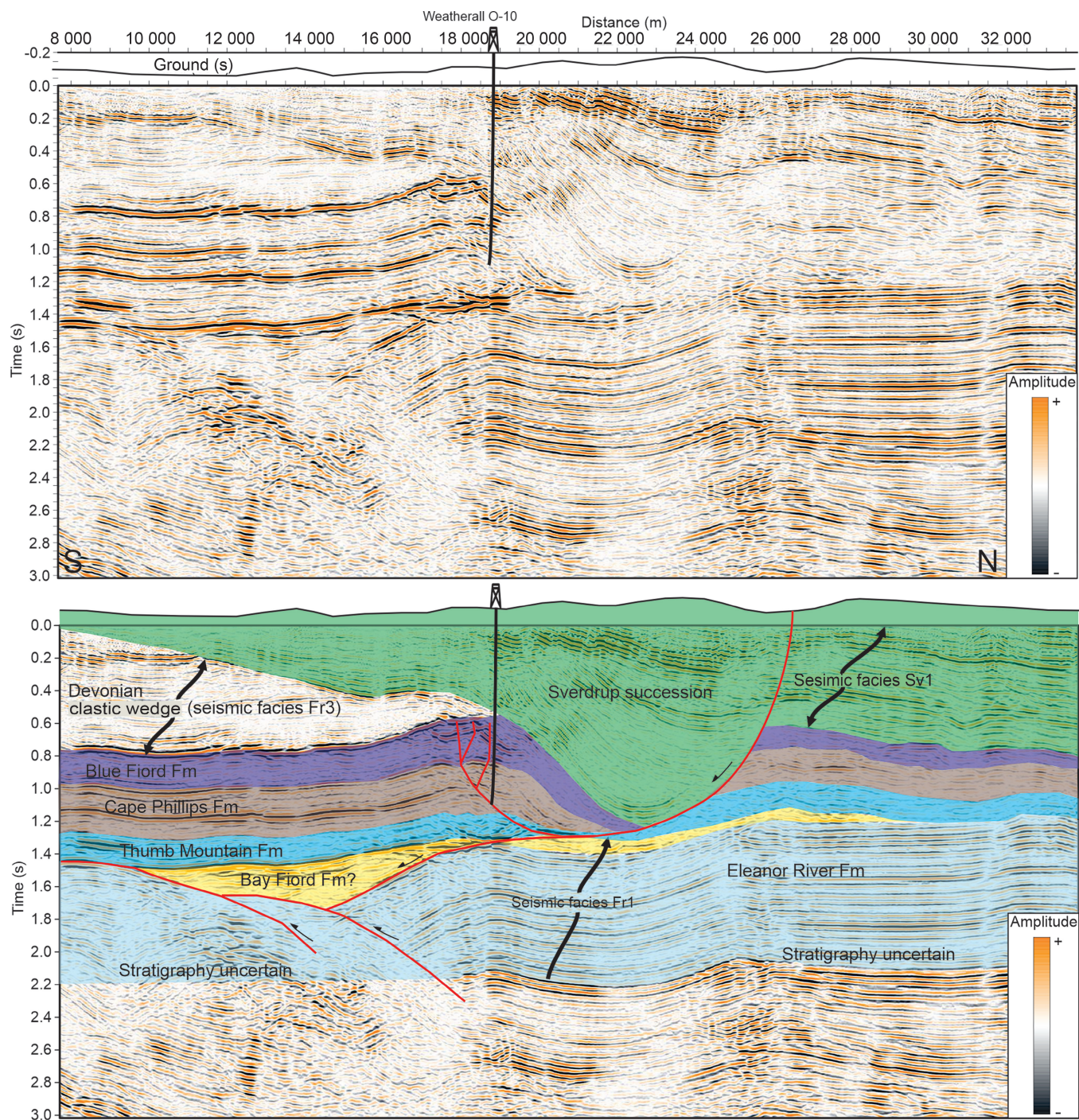


Figure 10. Interpreted seismic section from Melville Island, showing lower Paleozoic rocks below a hanging-wall anticline formed within strata of the Sverdrup Basin (for location and full discussion see Dewing et al., 2016b).

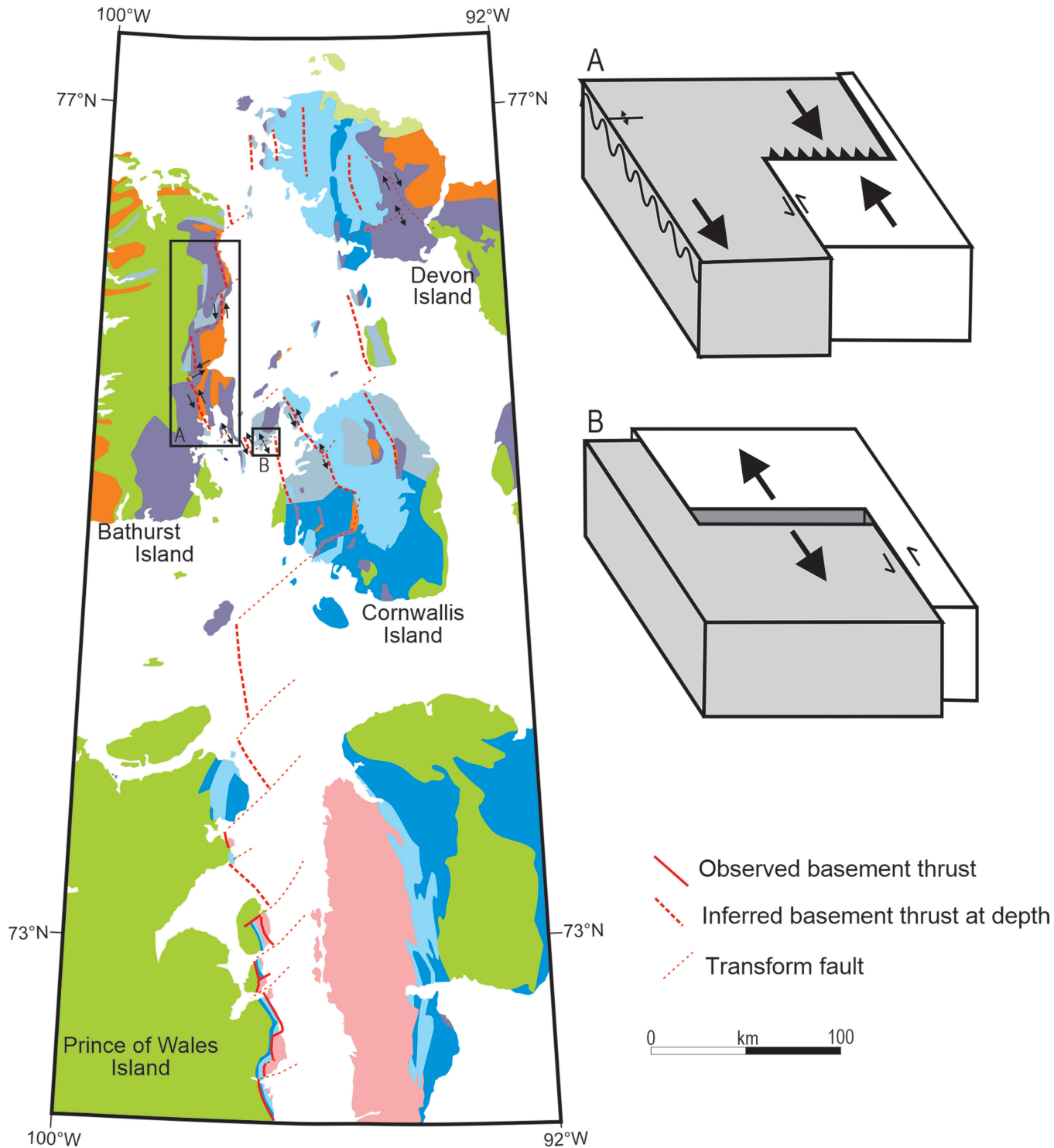


Figure 11. Late Devonian fault motion at Polaris Zn-Pb mine site *from* Reid et al. (2013b). Interpreted trace of leading edge of basement blocks shown as red dashed lines. Basement blocks that step to the west cause compression (block A), whereas those that step to the east cause local pull-apart basins (block B). Locations of blocks A and B are shown by boxes on the map.

et al., 2016; Williscroft et al., 2017; Alonso-Torres et al., 2018; B.J. Galloway et al., 2018; Beauchamp et al., 2019); C.J. Schröder-Adams at Carleton University (Pugh et al., 2014; Schröder-Adams et al., 2014); R.W.C. Arnott at the University of Ottawa (Midwinter et al., 2016, 2017a, b); G. Pearson at the University of Alberta (Dockman et al., 2018); and R. Stephenson at the University of Aberdeen (Stephenson et al., 2013).

INTERNATIONAL COLLABORATION

Formal agreements were negotiated with four international research institutes to support collaborative field-based research related to the Sverdrup Basin. These were the University of Hull (Bond and Grasby, 2017), University of Leeds (e.g. Grasby et al., 2015a, b), Bundesanstalt für Geowissenschaften und Rohstoffe (J.M. Galloway et al., 2018; Piepjohn et al., 2018), and Uppsala University (Deegan et al., 2016).

REFERENCES

- Alonso-Torres, D., Beauchamp, B., Guest, B., Hadlari, T., and Matthews, W., 2018. Late Paleozoic to Triassic arc magmatism north of the Sverdrup Basin in the Canadian Arctic: evidence from detrital zircon U-Pb geochronology; *Lithosphere*, v. 10, no. 3, p. 426–445. <https://doi.org/10.1130/L683.1>
- Anfinson, O.A., Embry, A.F., and Stockli, D.F., 2016. Geochronologic constraints on the Permian–Triassic northern source region of the Sverdrup Basin, Canadian Arctic Islands; *Tectonophysics*, v. 691, p. 206–219. <https://doi.org/10.1016/j.tecto.2016.02.041>
- Beauchamp, B., Alonso-Torres, D., Piepjohn, K., Thériault, P., and Grasby, S.E., 2019. Early Carboniferous syn-rift sedimentation in the Sverdrup Basin (Yelverton Pass area, northern Ellesmere Island, Arctic Canada): a solution to the Okse Bay problem; *in* Circum-Arctic structural events: tectonic evolution of the Arctic margins and trans-Arctic links with adjacent orogens, (ed.) K. Piepjohn, J.V. Strauss, L. Reinhardt, and W.C. McClelland; Geological Society of America, Special Paper 541, p. 255–284. [https://doi.org/10.1130/2018.2541\(13\)](https://doi.org/10.1130/2018.2541(13))
- Bond, D.P.G. and Grasby, S.E., 2017. On the causes of mass extinctions; *Palaeogeography, Palaeoclimatology, Palaeoecology*, v. 478, p. 3–29. <https://doi.org/10.1016/j.palaeo.2016.11.005>
- Davis, W.J., Schröder-Adams, C.J., Galloway, J.M., Herrle, J.O., and Pugh, A.T., 2017. U-Pb geochronology of bentonites from the Upper Cretaceous Kanguk Formation, Sverdrup Basin, Arctic Canada: constraints on sedimentation rates, biostratigraphic correlations and the late magmatic history of the High Arctic large igneous province; *Geological Magazine*, v. 154, no. 4, p. 757–776. <https://doi.org/10.1017/S0016756816000376>
- Deegan, F.M., Troll, V.R., Bédard, J.H., Evenchick, C.A., Dewing, K., Grasby, S., Geiger, H., Freda, C., Misiti, V., and Mollo, S., 2016. The stiff upper LIP: investigating the High Arctic large igneous province; *Geology Today*, v. 32, no. 3, p. 92–98. <https://doi.org/10.1111/gto.12138>
- Dewing, K. and Obermajer, M., 2011. Thermal maturity of the Sverdrup Basin, Arctic Canada and its bearing on hydrocarbon potential; Chapter 38 *in* Arctic petroleum geology, (ed.) A.M. Spencer, A.F. Embry, D.L. Gautier, A.V. Stoupakova, and K. Sørensen; Geological Society of London, Memoirs, v. 35, p. 567–580. <https://doi.org/10.1144/M35.38>
- Dewing, K., Springer, A., Guest, B., and Hadlari, T., 2016a. Geological evolution and hydrocarbon potential of the salt-cored Hoodoo Dome, Sverdrup Basin, Arctic Canada; *Marine and Petroleum Geology*, v. 71, p. 134–148. <https://doi.org/10.1016/j.marpetgeo.2015.11.024>
- Dewing, K., Brake, V., Duchesne, M.J., Brent, T.A., and Joyce, N., 2016b. Stratigraphy and structure of the Drake Point anticline, Sabine Peninsula, Canadian Arctic Islands; *Canadian Journal of Earth Sciences*, v. 53, no. 12, p. 1484–1500. <https://doi.org/10.1139/cjes-2016-0030>
- Dockman, D.M., Pearson, D.G., Heaman, L.M., Gibson, S.A., and Sarkar, C., 2018. Timing and origin of magmatism in the Sverdrup Basin, northern Canada — implications for lithospheric evolution in the High Arctic large igneous province (HALIP); *Tectonophysics*, v. 742–743, p. 50–65. <https://doi.org/10.1016/j.tecto.2018.05.010>
- Evenchick, C.A., Davis, W.J., Bédard, J.H., Hayward, N., and Friedman, R.M., 2015. Evidence for protracted High Arctic large igneous province magmatism in the central Sverdrup Basin from stratigraphy, geochronology, and paleodepths of saucer-shaped sills; *Geological Society of America Bulletin*, v. 127, p. 1366–1390. <https://doi.org/10.1130/B31190.1>
- Evenchick, C.A., Galloway, J.M., Saumur, B.M., and Davis, W.J., 2019. A revised stratigraphic framework for Cretaceous sedimentary and igneous rocks at Mokka Fiord, Axel Heiberg Island, Nunavut, with implications for the Cretaceous Normal Superchron; *Canadian Journal of Earth Sciences*, v. 56, no. 2, p. 158–174. <https://doi.org/10.1139/cjes-2018-0129>
- Galloway, B.J., Dewing, K., and Beauchamp, B., 2018. Upper Paleozoic hydrocarbon systems in the Sverdrup Basin, Canadian Arctic Islands; *Marine and Petroleum Geology*, v. 92, p. 809–821. <https://doi.org/10.1016/j.marpetgeo.2017.12.013>
- Galloway, J.M., Sweet, A.R., Pugh, A., Schröder-Adams, C.J., Swindles, G.T., Haggart, J.W., and Embry, A.F., 2012. Correlating middle Cretaceous palynological records from the Canadian High Arctic based on a section from the Sverdrup Basin and samples from the Eclipse Trough; *Palynology*, v. 36, no. 2, p. 277–302. <https://doi.org/10.1080/01916122.2012.670411>
- Galloway, J.M., Sweet, A.R., Swindles, G.T., Dewing, K., Hadlari, T., Embry, A.F., and Sanei, H., 2013. Middle Jurassic to Lower Cretaceous paleoclimate of Sverdrup Basin, Canadian Arctic Archipelago inferred from the palynostratigraphy; *Marine and Petroleum Geology*, v. 44, p. 240–255. <https://doi.org/10.1016/j.marpetgeo.2013.01.001>
- Galloway, J.M., Tullius, D.N., Evenchick, C.A., Swindles, G.T., Hadlari, T., and Embry, A., 2015. Early Cretaceous vegetation and climate change at high latitude: palynological evidence from Isachsen Formation, Arctic Canada; *Cretaceous Research*, v. 56, p. 399–420. <https://doi.org/10.1016/j.cretres.2015.04.002>

- Galloway, J.M., Reinhardt, L., von Gosen, W., Piepjohn, K., Dolezych, M., Lückge, A., Gaedicke, C., Sudermann, M., West, C.K., and Greenwood, D.R., 2018. Multidisciplinary study of Paleogene–Neogene strata on Ellesmere Island, Nunavut: GEM-2 Western Arctic project, Pearya terrane activity; Geological Survey of Canada, Open File 8330, 11 p. <https://doi.org/10.4095/306343>
- Gradstein, F.M., Ogg, J.G., Schmitz, M., and Ogg, G., 2012. A geologic time scale 2012; Elsevier, Amsterdam, 1144 p.
- Grasby, S.E., Sanei, H., and Beauchamp, B., 2011. Catastrophic dispersion of coal fly ash into oceans during the latest Permian extinction; *Nature Geoscience*, v. 4, p. 104–107. <https://doi.org/10.1038/ngeo1069>
- Grasby, S.E., Beauchamp, B., Embry, A., and Sanei, H., 2013a. Recurrent Early Triassic ocean anoxia; *Geology*, v. 41, no. 2, p. 175–178. <https://doi.org/10.1130/G33599.1>
- Grasby, S.E., Sanei, H., Beauchamp, B., and Chen, Z., 2013. Mercury deposition through the Permo-Triassic biotic crisis; *Chemical Geology*, v. 351, p. 209–216. <https://doi.org/10.1016/j.chemgeo.2013.05.022>
- Grasby, S.E., Sanei, H., and Beauchamp, B., 2015a. Latest Permian chars may derive from wildfires, not coal combustion; *Geology*, v. 43, no. 4, p. e358. <https://doi.org/10.1130/G36539C.1>
- Grasby, S.E., Beauchamp, B., Bond, D.P.G., Wignall, P.B., and Sanei, H., 2015b. Mercury anomalies associated with three extinction events (Capitanian crisis, latest Permian extinction and the Smithian/Spathian extinction) in NW Pangea; *Geological Magazine*, v. 153, no. 2, p. 285–297. <https://doi.org/10.1017/S0016756815000436>
- Grasby, S.E., Beauchamp, B., and Knies, J., 2016. Early Triassic productivity crises delayed recovery from world's worst mass extinction; *Geology*, v. 44, no. 9, p. 779–782. <https://doi.org/10.1130/G38141.1>
- Grasby, S.E., Shen, W., Yin, R., Gleason, J.D., Blum, J.D., Lepak, R.F., Hurley, J.P., and Beauchamp, B., 2017. Isotopic signatures of mercury contamination in latest Permian oceans; *Geology*, v. 45, no. 1, p. 55–58. <https://doi.org/10.1130/G38487.1>
- Hadlari, T., Midwinter, D., Galloway, J.M., Dewing, K., and Durbano, A.M., 2016. Mesozoic rift to post-rift tectonostratigraphy of the Sverdrup Basin, Canadian Arctic; *Marine and Petroleum Geology*, v. 76, p. 148–158. <https://doi.org/10.1016/j.marpetgeo.2016.05.008>
- Hadlari, T., Midwinter, D., Poulton, T.P., and Matthews, W.A., 2017. A Pangean rim of fire: reviewing the Triassic of western Laurentia; *Lithosphere*, v. 9, no. 4, p. 579–582. <https://doi.org/10.1130/L643.1>
- Hadlari, T., Dewing, K., Matthews, W.A., Alonso-Torres, D., and Midwinter, D., 2018. Early Triassic development of a foreland basin in the Canadian High Arctic: implications for a Pangean rim of fire; *Tectonophysics*, v. 736, p. 75–84. <https://doi.org/10.1016/j.tecto.2018.04.020>
- Herrle, J.O., Schröder-Adams, C.J., Davis, W., Pugh, A.T., Galloway, J.M., and Fath, J., 2015. Mid-Cretaceous High Arctic stratigraphy, climate, and oceanic anoxic events; *Geology*, v. 43, no. 5, p. 403–406. <https://doi.org/10.1130/G36439.1>
- Hills, L.V., Braunberger, W.F., Núñez-Betelu, L.K., and Hall, R.L., 1994. Paleogeographic significance of *Scaphites depressus* in the Kanguk Formation (Upper Cretaceous), Axel Heiberg Island, Canadian Arctic; *Canadian Journal of Earth Sciences*, v. 31, no. 4, p. 733–736. <https://doi.org/10.1139/e94-066>
- Jowitt, S.M., Williamson, M.-C., and Ernst, R.E., 2014. Geochemistry of the 130 to 80 Ma Canadian High Arctic large igneous province (HALIP) event and implications for Ni-Cu-PGE prospectivity; *Economic Geology*, v. 109, no. 2, p. 281–307. <https://doi.org/10.2113/econgeo.109.2.281>
- McAnena, A., Flögel, S., Hofmann, P., Herrle, J.O., Griesand, A., Pross, J., Talbot, H.M., Rethemeyer, J., Wallmann, K., and Wagner, T., 2013. Atlantic cooling associated with a marine biotic crisis during the mid-Cretaceous period; *Nature Geoscience*, v. 6, p. 558–561. <https://doi.org/10.1038/ngeo1850>
- Midwinter, D., Hadlari, T., Davis, W.J., Dewing, K., and Arnott, R.W.C., 2016. Dual provenance signatures of the Triassic northern Laurentian margin from detrital-zircon U-Pb and Hf-isotope analysis of Triassic–Jurassic strata in the Sverdrup Basin; *Lithosphere*, v. 8, no. 6, p. 668–683. <https://doi.org/10.1130/L517.1>
- Midwinter, D., Powell, J., Schneider, D., and Dewing, K., 2017a. Investigating the Paleozoic–Mesozoic low-temperature thermal history of the southwestern Canadian Arctic: insights from (U–Th)/He thermochronology; *Canadian Journal of Earth Sciences*, v. 54, no. 4, p. 430–444. <https://doi.org/10.1139/cjes-2016-0088>
- Midwinter, D., Hadlari, T., and Dewing, K., 2017b. Lower Triassic river-dominated deltaic successions from the Sverdrup Basin, Canadian Arctic; *Palaeogeography, Palaeoclimatology, Palaeoecology*, v. 476, p. 55–67. <https://doi.org/10.1016/j.palaeo.2017.03.017>
- Omma, J.E., Pease, V., and Scott, R.A., 2011. U–Pb SIMS zircon geochronology of Triassic and Jurassic sandstones on northwestern Axel Heiberg Island, northern Sverdrup Basin, Arctic Canada; Chapter 37 in *Arctic petroleum geology*, (ed.) A.M. Spencer, A.F. Embry, D.L. Gauthier, A.V. Stroupkova, and K. Sørensen; Geological Society of London, Memoirs, v. 35, p. 559–566. <https://doi.org/10.1144/M35.37>
- Piepjohn, K., Atkinson, E., Dewing, K., Smith, R., and Galloway, J., 2018. Cenozoic structural evolution on northern Banks Island, N.W.T. Canada; *Arktos*, v. 4, p. 1–19. <https://doi.org/10.1007/s41063-018-0046-y>
- Pugh, A.T., Schröder-Adams, C.J., Carter, E.S., Herrle, J.O., Galloway, J., Haggart, J.W., Andrews, J.L., and Hatsukano, K., 2014. Cenomanian to Santonian radiolarian biostratigraphy, carbon isotope stratigraphy and paleoenvironments of the Sverdrup Basin, Ellef Ringnes Island, Nunavut, Canada; *Palaeogeography, Palaeoclimatology, Palaeoecology*, v. 413, p. 101–122. <https://doi.org/10.1016/j.palaeo.2014.06.010>
- Reid, S., Dewing, K., and Sharp, R., 2013a. Polaris as a guide to northern exploration: ore textures, paragenesis and the origin of the carbonate-hosted Polaris Zn–Pb Mine, Nunavut, Canada; *Ore Geology Reviews*, v. 51, p. 27–42. <https://doi.org/10.1016/j.oregeorev.2012.11.003>
- Reid, S., Dewing, K., and Sharp, R., 2013b. Structural and diagenetic origin of breccias in the carbonate-hosted Polaris Zn–Pb deposit, Nunavut, Canada; *Ore Geology Reviews*, v. 55, p. 110–124. <https://doi.org/10.1016/j.oregeorev.2013.05.003>

- Saumur, B.M., Dewing, K., and Williamson, M.-C., 2016. Architecture of the Canadian portion of the High Arctic large igneous province and implications for magmatic Ni–Cu potential; *Canadian Journal of Earth Sciences*, v. 53, no. 5, p. 528–542. <https://doi.org/10.1139/cjes-2015-0220>
- Schröder-Adams, C.J., Herrle, J.O., Embry, A.F., Haggart, J.W., Galloway, J.M., Pugh, A.T., and Harwood, D.M., 2014. Aptian to Santonian foraminiferal biostratigraphy and paleoenvironmental change in the Sverdrup Basin as revealed at Glacier Fiord, Axel Heiberg Island, Canadian Arctic Archipelago; *Palaeogeography, Palaeoclimatology, Palaeoecology*, v. 413, p. 81–100. <https://doi.org/10.1016/j.palaeo.2014.03.010>
- Stephenson, R., Oakey, G.N., Schiffer, C., and Jacobsen, B.H., 2013. Ellesmere Island Lithosphere Experiment (ELLITE): Eureka basin inversion and mountain building, Ellesmere Island, Nunavut; *Geological Survey of Canada, Current Research* 2013-21, 12 p. <https://doi.org/10.4095/292859>
- Tullius, D.N., Leier, A.L., Galloway, J.M., Embry, A.F., and Pedersen, P.K., 2014. Sedimentology and stratigraphy of the Lower Cretaceous Isachsen Formation: Ellef Ringnes Island, Sverdrup Basin, Canadian Arctic Archipelago; *Marine and Petroleum Geology*, v. 57, p. 135–151. <https://doi.org/10.1016/j.marpetgeo.2014.05.018>
- Williscroft, K., Grasby, S.E., Beauchamp, B., Little, C.T.S., Dewing, K., Birgel, D., Poulton, T., and Hryniewicz, K., 2017. Extensive Early Cretaceous (Albian) methane seepage on Ellef Ringnes Island, Canadian High Arctic; *Geological Society of America Bulletin*, v. 129, no. 7-8, p. 788–805. <https://doi.org/10.1130/B31601.1>

APPENDIX A

Bibliography

Journal papers

- Alonso-Torres, D., Beauchamp, B., Guest, B., Hadlari, T., and Matthews, W., 2018. Late Paleozoic to Triassic arc magmatism north of the Sverdrup Basin in the Canadian Arctic: evidence from detrital zircon U-Pb geochronology; *Lithosphere*, v. 10, no. 3, p. 426–445. <https://doi.org/10.1130/L683.1>
- Anfinson, O.A., Embry, A.F., and Stockli, D.F., 2016. Geochronologic constraints on the Permian–Triassic northern source region of the Sverdrup Basin, Canadian Arctic Islands; *Tectonophysics*, v. 691, p. 206–219. <https://doi.org/10.1016/j.tecto.2016.02.041>
- Beauchamp, B. and Grasby, S.E., 2012. Permian lysocline shoaling and ocean acidification along NW Pangea led to carbonate eradication and chert expansion; *Palaeogeography, Palaeoclimatology, Palaeoecology*, v. 350–352, p. 73–90. <https://doi.org/10.1016/j.palaeo.2012.06.014>
- Beauchamp, B., Alonso-Torres, D., Piepjohn, K., Thériault, P., and Grasby, S.E., 2018. Early Carboniferous syn-rift sedimentation in the Sverdrup Basin (Yelverton Pass area, northern Ellesmere Island, Arctic Canada): a solution to the Okse Bay problem; *in* Circum-Arctic structural events: tectonic evolution of the Arctic margins and trans-Arctic links with adjacent orogens, (ed.) K. Piepjohn, J.V. Strauss, L. Reinhardt, and W.C. McClelland; Geological Society of America, Special Paper 541, p. 255–284. [https://doi.org/10.1130/2018.2541\(13\)](https://doi.org/10.1130/2018.2541(13))
- Bédard, J.H., Saumur, B.M., Tegner, C., Troll, V.R., Deegan, F.M., Evenchick, C.A., Grasby, S.E., and Dewing, K., 2021. Geochemical systematics of High Arctic large igneous province tholeiites from Canada — evidence for progressive crustal contamination in the plumbing system; *Journal of Petrology*, v. 62, no. 9, 39 p. <https://doi.org/10.1093/petrology/egab041>
- Bédard, J.H., Troll, V.R., Deegan, F.M., Tegner, C., Saumur, B.M., Evenchick, C.A., Grasby, S.E., and Dewing, K., 2021. High Arctic large igneous province alkaline rocks in Canada: evidence for multiple mantle components; *Journal of Petrology*, v. 62, no. 9, 31 p. <https://doi.org/10.1093/petrology/egab042>
- Bond, D.P.G. and Grasby, S.E., 2017. On the causes of mass extinctions; *Palaeogeography, Palaeoclimatology, Palaeoecology*, v. 478, p. 3–29. <https://doi.org/10.1016/j.palaeo.2016.11.005>
- Bond, D.P.G., Wignall, P.B., Joachimski, M.M., Sun, Y., Savov, I., Grasby, S.E., Beauchamp, B., and Blomeier, D.P.G., 2015. An abrupt extinction in the Middle Permian (Capitanian) of the Boreal Realm (Spitsbergen) and its link to anoxia and acidification; *Geological Society of America Bulletin*, v. 127, no. 9–10, p. 1411–1421. <https://doi.org/10.1130/B31216.1>
- Bond, D.P.G., Blomeier, D.G., Dustira, A.M., Wignall, P.B., Collins, D., Goode, T., Groen, R.D., Buggisch, W., and Grasby, S.E., 2018. Sequence stratigraphy, basin morphology and sea-level history for the Permian Kapp Starostin Formation of Svalbard, Norway; *Geological Magazine*, v. 155, no. 5, p. 1023–1039. <https://doi.org/10.1017/S0016756816001126>
- Boutelier, J., Cruden, A., Brent, T., and Stephenson, R., 2011. Timing and mechanisms controlling evaporite diapirism on Ellef Ringnes Island, Canadian Arctic Archipelago; *Basin Research*, v. 23, no. 4, p. 478–498. <https://doi.org/10.1111/j.1365-2117.2010.00497.x>
- Buchan, K.L. and Ernst, R.E., 2018. A giant circumferential dyke swarm associated with the High Arctic large igneous province (HALIP); *Gondwana Research*, v. 58, p. 39–57. <https://doi.org/10.1016/j.gr.2018.02.006>
- Chen, Z. and Osadetz, K.G., 2011. Using discovery process and accumulation volumetric models to improve petroleum resource assessment in Sverdrup Basin, Canadian Arctic Archipelago; Chapter 39 *in* Arctic petroleum geology, (ed.) A.M. Spencer, A.F. Embry, D.L. Gautier, A.V. Stoupakova, and K. Sørensen; Geological Society of London, Memoirs, v. 35, p. 581–593. <https://doi.org/10.1144/M35.39>
- Chen, Z., Liu, Y., and Osadetz, K., 2012. Geological risk evaluation using the support vector machine with examples from the Late Triassic–Early Jurassic structural play in western Sverdrup Basin, Canadian Arctic Archipelago; *Bulletin of Canadian Petroleum Geology*, v. 60, no. 3, p. 142–157. <https://doi.org/10.2113/gscpgbull.60.3.142>
- Chen, Z., Grasby, S.E., Dewing, K., Osadetz, K.G., and Brent, T., 2016. Geological controls on the present temperature field of the western Sverdrup Basin, Canadian Arctic Archipelago; *Basin Research*, v. 30, no. S1, p. 479–496. <https://doi.org/10.1111/bre.12232>
- Davis, W.J., Schröder-Adams, C.J., Galloway, J.M., Herrle, J.O., and Pugh, A.T., 2017. U–Pb geochronology of bentonites from the Upper Cretaceous Kanguk Formation, Sverdrup Basin, Arctic Canada: constraints on sedimentation rates, biostratigraphic correlations and the late magmatic history of the High Arctic large igneous province; *Geological Magazine*, v. 154, no. 4, p. 757–776. <https://doi.org/10.1017/S0016756816000376>
- Deegan, F.M., Troll, V.R., Bédard, J.H., Evenchick, C.A., Dewing, K., Grasby, S., Geiger, H., Freda, C., Misiti, V., and Mollo, S., 2016. The stiff upper LIP: investigating the High Arctic large igneous province; *Geology Today*, v. 32, no. 3, p. 92–98. <https://doi.org/10.1111/gto.12138>
- Deegan, F.M., Bédard, J.H., Grasby, S.E., Dewing, K., Geiger, H., Misiti, V., Capriolo, M., Callegaro, S., Svensen, H.H., Yakymchuk, C., Aradi, L.E., Freda, C., and Troll, V.R., 2022. Magma–shale interaction in large igneous provinces: implications for climate warming and sulfide genesis; *Journal of Petrology*, v. 63, no. 9, 10 p. <https://doi.org/10.1093/petrology/egac094>

- Dewing, K. and Obermajer, M., 2011. Thermal maturity of the Sverdrup Basin, Arctic Canada and its bearing on hydrocarbon potential; Chapter 38 in *Arctic petroleum geology*, (ed.) A.M. Spencer, A.F. Embry, D.L. Gautier, A.V. Stoupakova, and K. Sørensen; Geological Society of London, Memoirs, v. 35, p. 567–580. <https://doi.org/10.1144/M35.38>
- Dewing, K., Brake, V., Duchesne, M.J., Brent, T.A., and Joyce, N., 2016. Stratigraphy and structure of the Drake Point anticline, Sabine Peninsula, Canadian Arctic Islands; *Canadian Journal of Earth Sciences*, v. 53, no. 12, p. 1484–1500. <https://doi.org/10.1139/cjes-2016-0030>
- Dewing, K., Springer, A., Guest, B., and Hadlari, T., 2016. Geological evolution and hydrocarbon potential of the salt-cored Hoodoo Dome, Sverdrup Basin, Arctic Canada; *Marine and Petroleum Geology*, v. 71, p. 134–148. <https://doi.org/10.1016/j.marpetgeo.2015.11.024>
- Duchesne, M.J., Claproot, M., and Gloaguen, E., 2012. Improving seismic velocity estimation for 2D poststack time migration of regional seismic data using kriging with an external drift; *The Leading Edge*, v. 31, no. 10, p. 1156–1166. <https://doi.org/10.1190/tle31101156.1>
- Embry, A.F., 2009. Crockerland — the source area for the Triassic to Middle Jurassic strata of northern Axel Heiberg Island, Canadian Arctic Islands; *Bulletin of Canadian Petroleum Geology*, v. 57, no. 2, p. 129–140. <https://doi.org/10.2113/gscpgbull.57.2.129>
- Embry, A., 2011. Petroleum prospectivity of the Triassic–Jurassic succession of Sverdrup Basin, Canadian Arctic Archipelago; Chapter 36 in *Arctic petroleum geology*, (ed.) A.M. Spencer, A.F. Embry, D.L. Gautier, A.V. Stoupakova, and K. Sørensen; Geological Society of London, Memoirs, v. 35, p. 545–558. <https://doi.org/10.1144/M35.36>
- Embry, A.F., Beauchamp, B., Dewing, K., and Dixon, J., 2019. Episodic tectonics in the Phanerozoic succession of the Canadian High Arctic and the “10-million-year flood”; in *Circum-Arctic structural events: tectonic evolution of the Arctic margins and trans-Arctic links with adjacent orogens*, (ed.) K. Piepjohn, J.V. Strauss, L. Reinhardt, and W.C. McClelland; Geological Society of America, Special Paper 541, p. 213–230. [https://doi.org/10.1130/2018.2541\(11\)](https://doi.org/10.1130/2018.2541(11))
- Evenchick, C.A., Davis, W.J., Bédard, J.H., Hayward, N., and Friedman, R.M., 2015. Evidence for protracted High Arctic large igneous province magmatism in the central Sverdrup Basin from stratigraphy, geochronology, and paleodepths of saucer-shaped sills; *Geological Society of America Bulletin*, v. 127, no. 9–10, p. 1366–1390. <https://doi.org/10.1130/B31190.1>
- Evenchick, C.A., Galloway, J.M., Saumur, B.M., and Davis, W.J., 2019. A revised stratigraphic framework for Cretaceous sedimentary and igneous rocks at Mokka Fiord, Axel Heiberg Island, Nunavut, with implications for the Cretaceous Normal Superchron; *Canadian Journal of Earth Sciences*, v. 56, no. 2, p. 158–174. <https://doi.org/10.1139/cjes-2018-0129>
- Fedorowski, J. and Bamber, E.W., 2012. Paleobiogeographic significance of Bashkirian (Pennsylvanian) rugose corals from northernmost Ellesmere Island, Arctic Canada; *Geologica Belgica*, v. 15, no. 4, p. 350–354.
- Fedorowski, J., Bamber, E.W., and Baranova, D.V., 2012. An unusual occurrence of Bashkirian (Pennsylvanian) rugose corals from the Sverdrup Basin, Arctic Canada; *Journal of Paleontology*, v. 86, no. 6, p. 979–995. <https://doi.org/10.1666/11-144R1.1>
- Galloway, J.M., Sweet, A.R., Pugh, A., Schröder-Adams, C.J., Swindles, G.T., Haggart, J.W., and Embry, A.F., 2012. Correlating middle Cretaceous palynological records from the Canadian High Arctic based on a section from the Sverdrup Basin and samples from the Eclipse Trough; *Palynology*, v. 36, no. 2, p. 277–302. <https://doi.org/10.1080/01916122.2012.670411>
- Galloway, J.M., Sweet, A.R., Swindles, G.T., Dewing, K., Hadlari, T., Embry, A.F., and Sanei, H., 2013. Middle Jurassic to Lower Cretaceous paleoclimate of Sverdrup Basin, Canadian Arctic Archipelago inferred from the palynostratigraphy; *Marine and Petroleum Geology*, v. 44, p. 240–255. <https://doi.org/10.1016/j.marpetgeo.2013.01.001>
- Galloway, J.M., Tullius, D.N., Evenchick, C.A., Swindles, G.T., Hadlari, T., and Embry, A., 2015. Early Cretaceous vegetation and climate change at high latitude: palynological evidence from Isachsen Formation, Arctic Canada; *Cretaceous Research*, v. 56, p. 399–420. <https://doi.org/10.1016/j.cretres.2015.04.002>
- Galloway, J.M., Vickers, M.L., Price, G.D., Poulton, T., Grasby, S.E., Hadlari, T., Beauchamp, B., and Sulphur, K., 2020. Finding the VOICE: organic carbon isotope chemostratigraphy of Late Jurassic–Early Cretaceous Arctic Canada; *Geological Magazine*, v. 157, no. 10, p. 1643–1657. <https://doi.org/10.1017/S0016756819001316>
- Goodarzi, F., Gentzis, T., Grasby, S.E., and Dewing, K., 2018. Influence of igneous intrusions on thermal maturity and optical texture: comparison between a bituminous marl and a coal seam of the same maturity; *International Journal of Coal Geology*, v. 198, p. 183–197. <https://doi.org/10.1016/j.coal.2018.09.013>
- Grasby, S.E. and Beauchamp, B., 2008. Intrabasin variability of the carbon-isotope record across the Permian–Triassic transition, Sverdrup Basin, Arctic Canada; *Chemical Geology*, v. 253, no. 3–4, p. 141–150. <https://doi.org/10.1016/j.chemgeo.2008.05.005>
- Grasby, S.E. and Beauchamp, B., 2009. Latest Permian to Early Triassic basin-to-shelf anoxia in the Sverdrup Basin, Arctic Canada; *Chemical Geology*, v. 264, no. 1–4, p. 232–246. <https://doi.org/10.1016/j.chemgeo.2009.03.009>
- Grasby, S.E., Chen, Z., Issler, D., and Stasiuk, L., 2009. Evidence for deep anaerobic biodegradation associated with rapid sedimentation and burial in the Beaufort–Mackenzie basin, Canada; *Applied Geochemistry*, v. 24, no. 4, p. 536–542. <https://doi.org/10.1016/j.apgeochem.2008.12.008>
- Grasby, S.E., Sanei, H., and Beauchamp, B., 2011. Catastrophic dispersion of coal fly ash into oceans during the latest Permian extinction; *Nature Geoscience*, v. 4, p. 104–107. <https://doi.org/10.1038/ngeo1069>
- Grasby, S.E., Chen, Z., and Dewing, K., 2012. Formation water geochemistry of the Sverdrup Basin: implications for hydrocarbon development in the High Arctic; *Applied Geochemistry*, v. 27, no. 8, p. 1623–1632. <https://doi.org/10.1016/j.apgeochem.2012.04.001>

- Grasby, S.E., Beauchamp, B., Embry, A., and Sanei, H., 2013. Recurrent Early Triassic ocean anoxia; *Geology*, v. 41, no. 2, p. 175–178. <https://doi.org/10.1130/G33599.1>
- Grasby, S.E., Sanei, H., Beauchamp, B., and Chen, Z., 2013. Mercury deposition through the Permo-Triassic biotic crisis; *Chemical Geology*, v. 351, p. 209–216. <https://doi.org/10.1016/j.chemgeo.2013.05.022>
- Grasby, S.E., Proemse, B.C., and Beauchamp, B., 2014. Deep groundwater circulation through the High Arctic cryosphere forms Mars-like gullies; *Geology*, v. 42, no. 8, p. 651–654. <https://doi.org/10.1130/G35599.1>
- Grasby, S.E., Beauchamp, B., Bond, D.P.G., Wignall, P.B., and Sanei, H., 2015. Mercury anomalies associated with three extinction events (Capitanian crisis, latest Permian extinction and the Smithian/Spathian extinction) in NW Pangea; *Geological Magazine*, v. 153, no. 2, p. 285–297. <https://doi.org/10.1017/S0016756815000436>
- Grasby, S.E., Beauchamp, B., Bond, D.P.G., Wignall, P., Talavera, C., Galloway, J.M., Piepjohn, K., Reinhardt, L., and Blomeier, D., 2015. Progressive environmental deterioration in northwestern Pangea leading to the latest Permian extinction; *Geological Society of America Bulletin*, v. 127, no. 9–10, p. 1331–1347. <https://doi.org/10.1130/B31197.1>
- Grasby, S.E., Sanei, H., and Beauchamp, B., 2015. Latest Permian cherts may derive from wildfires, not coal combustion; *Geology*, v. 43, no. 4, p. e358. <https://doi.org/10.1130/G36539C.1>
- Grasby, S.E., Beauchamp, B., and Knies, J., 2016. Early Triassic productivity crises delayed recovery from world's worst mass extinction; *Geology*, v. 44, no. 9, p. 779–782. <https://doi.org/10.1130/G38141.1>
- Grasby, S.E., McCune, G.E., Beauchamp, B., and Galloway, J.M., 2017. Lower Cretaceous cold snaps led to widespread glendonite occurrences in the Sverdrup Basin, Canadian High Arctic; *Geological Society of America Bulletin*, v. 129, no. 7–8, p. 771–787. <https://doi.org/10.1130/B31600.1>
- Grasby, S.E., Shen, W., Yin, R., Gleason, J.D., Blum, J.D., Lepak, R.F., Hurley, J.P., and Beauchamp, B., 2017. Isotopic signatures of mercury contamination in latest Permian oceans; *Geology*, v. 45, no. 1, p. 55–58. <https://doi.org/10.1130/G38487.1>
- Grasby, S.E., Them, T.R., Chen, Z., Yin, R., and Ardakani, O.H., 2019. Mercury as a proxy for volcanic emissions in the geologic record; *Earth-Science Reviews*, v. 196, art. no. 102880, p. 1–16. <https://doi.org/10.1016/j.earscirev.2019.102880>
- Grasby, S.E., Knies, J., Beauchamp, B., Bond, D.P.G., Wignall, P., and Sun, Y., 2020. Global warming leads to Early Triassic nutrient stress across northern Pangea; *Geological Society of America Bulletin*, v. 132, no. 5–6, p. 943–954. <https://doi.org/10.1130/B32036.1>
- Hadlari, T., Midwinter, D., Galloway, J.M., Dewing, K., and Durbano, A.M., 2016. Mesozoic rift to post-rift tectonostratigraphy of the Sverdrup Basin, Canadian Arctic; *Marine and Petroleum Geology*, v. 76, p. 148–158. <https://doi.org/10.1016/j.marpetgeo.2016.05.008>
- Hadlari, T., Midwinter, D., Poulton, T.P., and Matthews, W.A., 2017. A Pangean rim of fire: reviewing the Triassic of western Laurentia; *Lithosphere*, v. 9, no. 4, p. 579–582. <https://doi.org/10.1130/L643.1>
- Hadlari, T., Dewing, K., Matthews, W.A., Alonso-Torres, D., and Midwinter, D., 2018. Early Triassic development of a foreland basin in the Canadian High Arctic: implications for a Pangean rim of fire; *Tectonophysics*, v. 736, p. 75–84. <https://doi.org/10.1016/j.tecto.2018.04.020>
- Harrison, J.C. and Jackson, M.P.A., 2014. Exposed evaporite diapirs and minibasins above a canopy in central Sverdrup Basin, Axel Heiberg Island, Arctic Canada; *Basin Research*, v. 26, no. 4, p. 567–596. <https://doi.org/10.1111/bre.12037>
- Herrle, J.O., Schröder-Adams, C.J., Davis, W., Pugh, A.T., Galloway, J.M., and Fath, J., 2015. Mid-Cretaceous High Arctic stratigraphy, climate, and oceanic anoxic events; *Geology*, v. 43, no. 5, p. 403–406. <https://doi.org/10.1130/G36439.1>
- Huang, Y., Chen, Z.-Q., Wignall, P.B., Grasby, S.E., Zhao, L., Wang, X., and Kaiho, K., 2018. Biotic responses to volatile volcanism and environmental stresses over the Guadalupian–Lopingian (Permian) transition; *Geology*, v. 47, no. 2, p. 175–178. <https://doi.org/10.1130/G45283.1>
- Jowitt, S.M., Williamson, M.-C., and Ernst, R.E., 2014. Geochemistry of the 130 to 80 Ma Canadian High Arctic large igneous province (HALIP) event and implications for Ni-Cu-PGE prospectivity; *Economic Geology*, v. 109, no. 2, p. 281–307. <https://doi.org/10.2113/econgeo.109.2.281>
- Kabanov, P., Vandenberg, R., Pelchat, P., Cameron, M., and Dewing, K., 2020. Lithostratigraphy of Devonian basinal mudrocks in frontier areas of northwestern Canada augmented with ED-XRF technique; *Arktos*, v. 6, p. 39–52. <https://doi.org/10.1007/s41063-020-00074-z>
- Kingsbury, C.G., Ernst, R.E., Cousens, B.L., and Williamson, M.-C., 2016. The High Arctic LIP in Canada: trace element and Sm-Nd isotopic evidence for the role of mantle heterogeneity and crustal assimilation; *Norwegian Journal of Geology*, v. 96, no. 2, p. 13–33. <https://doi.org/10.17850/njg96-2-02>
- Knies, J., Grasby, S.E., Beauchamp, B., and Schubert, C.J., 2013. Water mass denitrification during the latest Permian extinction in the Sverdrup Basin, Arctic Canada; *Geology*, v. 41, no. 2, p. 167–170. <https://doi.org/10.1130/G33816.1>
- Majorowicz, J., Grasby, S.E., Safanda, J., and Beauchamp, B., 2014. Gas hydrate contribution to late Permian global warming; *Earth and Planetary Science Letters*, v. 393, p. 243–253. <https://doi.org/10.1016/j.epsl.2014.03.003>
- Midwinter, D., Hadlari, T., Davis, W.J., Dewing, K., and Arnott, R.W.C., 2016. Dual provenance signatures of the Triassic northern Laurentian margin from detrital-zircon U-Pb and Hf-isotope analysis of Triassic–Jurassic strata in the Sverdrup Basin; *Lithosphere*, v. 8, no. 6, p. 668–683. <https://doi.org/10.1130/L517.1>
- Midwinter, D., Hadlari, T., and Dewing, K., 2017. Lower Triassic river-dominated deltaic successions from the Sverdrup Basin, Canadian Arctic; *Palaeogeography, Palaeoclimatology, Palaeoecology*, v. 476, p. 55–67. <https://doi.org/10.1016/j.palaeo.2017.03.017>

- Midwinter, D., Powell, J., Schneider, D., and Dewing, K., 2017. Investigating the Paleozoic–Mesozoic low-temperature thermal history of the southwestern Canadian Arctic: insights from (U–Th)/He thermochronology; *Canadian Journal of Earth Sciences*, v. 54, no. 4, p. 430–444. <https://doi.org/10.1139/cjes-2016-0088>
- Neville, L.A., McNeil, D.H., Grasby, S.E., Ardakani, O.H., and Sanei, H., 2017. Late Paleocene–middle Eocene hydrocarbon source rock potential in the Arctic Beaufort–Mackenzie Basin; *Marine and Petroleum Geology*, v. 86, p. 1082–1091. <https://doi.org/10.1016/j.marpetgeo.2017.06.042>
- Proemse, B.C., Grasby, S.E., Wieser, M.E., Mayer, B., and Beauchamp, B., 2013. Molybdenum isotopic evidence for oxic marine conditions during the latest Permian extinction; *Geology*, v. 41, no. 9, p. 967–970. <https://doi.org/10.1130/G34466.1>
- Pugh, A.T., Schröder-Adams, C.J., Carter, E.S., Herrle, J.O., Galloway, J.M., Haggart, J.W., Andrews, J.L., and Hatsukano, K., 2014. Cenomanian to Santonian radiolarian biostratigraphy, carbon isotope stratigraphy and paleoenvironments of the Sverdrup Basin, Ellef Ringnes Island, Nunavut, Canada; *Palaeogeography, Palaeoclimatology, Palaeoecology*, v. 413, p. 101–122. <https://doi.org/10.1016/j.palaeo.2014.06.010>
- Rørh, T.S., Andersen, T., Dypvik, H., and Embry, A.F., 2010. Detrital zircon characteristics of the Lower Cretaceous Isachsen Formation, Sverdrup Basin: source constraints from age and Hf isotope data; *Canadian Journal of Earth Sciences*, v. 47, no. 3, p. 255–271. <https://doi.org/10.1139/E10-006>
- Sanei, H., Grasby, S.G., and Beauchamp, B.B., 2012. Latest Permian mercury anomalies; *Geology*, v. 40, no. 1, p. 63–66. <https://doi.org/10.1130/G32596.1>
- Saumur, B.M., Dewing, K., and Williamson, M.-C., 2016. Architecture of the Canadian portion of the High Arctic large igneous province and implications for magmatic Ni–Cu potential; *Canadian Journal of Earth Sciences*, v. 53, no. 5, p. 528–542. <https://doi.org/10.1139/cjes-2015-0220>
- Schröder-Adams, C.J., Herrle, J.O., Embry, A.F., Haggart, J.W., Galloway, J.M., Pugh, A.T., and Harwood, D.M., 2014. Aptian to Santonian foraminiferal biostratigraphy and paleoenvironmental change in the Sverdrup Basin as revealed at Glacier Fiord, Axel Heiberg Island, Canadian Arctic Archipelago; *Palaeogeography, Palaeoclimatology, Palaeoecology*, v. 413, p. 81–100. <https://doi.org/10.1016/j.palaeo.2014.03.010>
- Sudermann, M., Galloway, J.M., Greenwood, D.R., West, C.K., and Reinhardt, L., 2021. Palynostratigraphy of the lower Paleogene Margaret Formation at Stenkul Fiord, Ellesmere Island, Nunavut, Canada; *Palynology*, v. 45, no. 3, p. 459–476. <https://doi.org/10.1080/01916122.2020.1861121>
- Them, T.R., II, Jagoe, C.H., Caruthers, A.H., Gill, B.C., Grasby, S.E., Gröcke, D.R., Yin, R., and Owens, J.D., 2019. Terrestrial sources as the primary delivery mechanism of mercury to the oceans across the Toarcian oceanic anoxic event (Early Jurassic); *Earth and Planetary Science Letters*, v. 507, p. 62–72. <https://doi.org/10.1016/j.epsl.2018.11.029>
- Tullius, D.N., Leier, A.L., Galloway, J.M., Embry, A.F., and Pedersen, P.K., 2014. Sedimentology and stratigraphy of the Lower Cretaceous Isachsen Formation: Ellef Ringnes Island, Sverdrup Basin, Canadian Arctic Archipelago; *Marine and Petroleum Geology*, v. 57, p. 135–151. <https://doi.org/10.1016/j.marpetgeo.2014.05.018>
- Wang, X., Cawood, P.A., Zhao, H., Zhao, L., Grasby, S.E., Chen, Z.-Q., Wignall, P.B., Lv, Z., and Han, C., 2018. Mercury anomalies across the end Permian mass extinction in South China from shallow and deep water depositional environments; *Earth and Planetary Science Letters*, v. 496, p. 159–167. <https://doi.org/10.1016/j.epsl.2018.05.044>
- Wang, X., Cawood, P.A., Zhao, H., Zhao, L., Grasby, S.E., Chen, Z.-Q., and Zhang, L., 2019. Global mercury cycle during the end-Permian mass extinction and subsequent Early Triassic recovery; *Earth and Planetary Science Letters*, v. 513, p. 144–155. <https://doi.org/10.1016/j.epsl.2019.02.026>
- Williamson, M.-C., Smyth, H.R., Peterson, R.C., and Lavoie, D., 2011. Comparative geological studies of volcanic terrain on Mars: examples from the Isachsen Formation, Axel Heiberg Island, Canadian High Arctic; in *Analogues for planetary exploration*, (ed.) W.B. Garry and J.E. Bleacher; Geological Society of America Special Paper, v. 483, p. 249–261. [https://doi.org/10.1130/2011.2483\(16\)](https://doi.org/10.1130/2011.2483(16))
- Williscroft, K., Grasby, S.E., Beauchamp, B., Little, C.T.S., Dewing, K., Birgel, D., Poulton, T., and Hryniewicz, K., 2017. Extensive Early Cretaceous (Albian) methane seepage on Ellef Ringnes Island, Canadian High Arctic; *Geological Society of America Bulletin*, v. 129, no. 7–8, p. 788–805. <https://doi.org/10.1130/B31601.1>
- Wilton, D.H.C., Saumur, B.M., Gordon, A., and Williamson, M.-C., 2019. Enigmatic massive sulphide mineralization in the High Arctic large igneous province, Nunavut, Canada; *Canadian Journal of Earth Sciences*, v. 56, no. 7, p. 790–801. <https://doi.org/10.1139/cjes-2018-0156>

Geological Survey of Canada reports

Current Research

- Brake, V.I., Duchesne, M.J., and Brent, T.A., 2012. Preliminary results of shallow subsurface geological mapping, Sabine Peninsula, western Arctic Islands; Geological Survey of Canada, Current Research 2012-5, 17 p. <https://doi.org/10.4095/289712>

Fossil reports (internal reports available by request from the GSC's Calgary office)

- Galloway, J.M., 2012. Palynological report on samples submitted by Carol Evenchick, Geological Survey of Canada–Vancouver, collected from Ellef Ringnes Island, Nunavut, 2010 (map sheet 69-F/6 to 69-F/12); Geological Survey of Canada, unpub. Paleontological Report JMG-2012-04, 9 p.
- Galloway, J.M., 2012. Palynological report on samples submitted by Dylan Tullius, University of Calgary, collected from Ellef Ringnes Island, Nunavut, 2010 (map sheet 69-F/6 to 69-F/12); Geological Survey of Canada, unpub. Paleontological Report JMG-2012-05, 10 p.

- Galloway, J.M., 2016. Palynological report on two samples of Permian age from Cornwall O-30, Cornwall Island, Sverdrup Basin (UWI:3000307730094300); Geological Survey of Canada, unpub. Fossil Report JMG-2016-02.
- Galloway, J.M., 2017. Palynological report on one sample of Early Cretaceous age from Mokka Fiord, Axel Heiberg Island, Sverdrup Basin; Geological Survey of Canada, unpub. Fossil Report JMG-2017-01.
- Galloway, J.M., 2018. Palynological report on samples submitted by Steve Grasby and Rod Smith, Geological Survey of Canada, Salor Creek, Ellesmere Island, Nunavut (NTS 120-C) Northwest Territories; Geological Survey of Canada, unpub. Fossil Report JMG-2018-01.
- Golding, M., 2015. Report on 19 (17 productive) microfossil sub-samples taken from ammonoid collections of E.T. Tozer (1956–2000): Baumann Fiord (49-C), Eureka Sound south (49-F), Greely Fiord west (340-B), Bukken Fiord (560-A), and Cape Stallworth (560-D) map areas, plus East Greenland; Geological Survey of Canada, unpub. Fossil Report 1-MG-2015, 12 p.
- Golding, M., 2015. Report on 32 (29 productive) microfossil samples submitted by A.F. Embry (1985–1996): Bukken Fiord (560-A), Greely Fiord west (340-B) map areas; Geological Survey of Canada, unpub. Fossil Report 2-MG-2015, 19 p.
- Golding, M., 2015. Report on 25 (18 productive) microfossil submitted for analysis by K. Dewing (2008): Dommet Point (79-A), Sabine Peninsula (79-B), Emerald Isle (89-A), Satellite Bay (89-C) and Ballantyne Strait (89-D) map areas; Geological Survey of Canada, unpub. Fossil Report 3-MG-2015, 12 p.
- Golding, M., 2015. Report on 96 (75 productive) microfossil samples submitted by M.J. Orchard (1994–1996): Bukken Fiord (560-A) map area; Geological Survey of Canada, unpub. Fossil Report 4-MG-2015, 45 p.
- MacNaughton, R.B., 2019. Report on one lot of trace fossils (borings) from map area NTS 340-F/06, Nunavut, collected by J. Galloway (GSC-Calgary) under the GEM-II Western Arctic project; Geological Survey of Canada, unpub. Paleontological Report 01-RBM-2019, 3 p.
- Orchard, M.J., 2009. Report on 25 (18 productive) microfossil samples submitted for analysis by K. Dewing (2008) Arctic map area; Geological Survey of Canada, unpub. Paleontology Report 012-MJO-2009.
- Poulton, T.P., 2010. Report on 1 collection of early Valanginian (Early Cretaceous) fossils collected by Gennyne McCune and Steve Grasby in 2010, in the Deer Bay Formation, Ellef Ringnes Island, Nunavut (NTS 69-F); Geological Survey of Canada, unpub. Paleontology Report K1-2010-TPP.
- Poulton, T.P., 2010. Report on 20 collections of Early Cretaceous (Albian) fossils collected from the Christopher Formation, on and around hydrocarbon seep mounds, by Krista Willisicroft and Steve Grasby, on Ellef Ringnes Island, Nunavut, in 2010 (NTS 69-F); Geological Survey of Canada, unpub. Paleontology Report K2-2010-TPP.
- Sweet, A.R., 2009. Applied research report on 1 outcrop sample from NTS 340-D-11; UTM 18X, 479880m E, 9067338m N; Ellesmere Island, Nunavut, Canada; Geological Survey of Canada, unpub. Paleontology Report ARS-2009-09.

Maps

- Brake, V.I., Duchesne, M.J., Dewing, K., Claprood, M., Gloaguen, E., and Brent, T.A., 2013. Time- and depth-structure map, Awingak Formation, Sabine Peninsula, Melville Island, Nunavut–Northwest Territories; Geological Survey of Canada, Canadian Geoscience Map 161, scale 1:200 000.
- Brake, V.I., Duchesne, M.J., Dewing, K., Claprood, M., Gloaguen, E., and Brent, T.A., 2013. Time- and depth-structure map, Invincible Point Member, Christopher Formation, Sabine Peninsula, Melville Island, Nunavut–Northwest Territories; Geological Survey of Canada, Canadian Geoscience Map 162, scale 1:200 000.
- Brake, V.I., Duchesne, M.J., Dewing, K., Claprood, M., Gloaguen, E., and Brent, T.A., 2013. Time- and depth-structure map, Christopher Formation, Sabine Peninsula, Melville Island, Nunavut–Northwest Territories; Geological Survey of Canada, Canadian Geoscience Map 163, scale 1:200 000.
- Brake, V.I., Duchesne, M.J., Dewing, K., Claprood, M., Gloaguen, E., and Brent, T.A., 2013. Time- and depth-structure map, Sandy Point Formation, Sabine Peninsula, Melville Island, Nunavut–Northwest Territories; Geological Survey of Canada, Canadian Geoscience Map 164, scale 1:200 000.
- Duchesne, M.J., Brake, V.I., Dewing, K., Claprood, M., Gloaguen, E., and Brent, T.A., 2013. Time- and depth-structure map, Grosvenor Island Formation, Sabine Peninsula, Melville Island, Nunavut–Northwest Territories; Geological Survey of Canada, Canadian Geoscience Map 165, scale 1:200 000.
- Duchesne, M.J., Brake, V.I., Dewing, K., Claprood, M., Gloaguen, E., and Brent, T.A., 2013. Time- and depth-structure map, Gore Point Member, Roche Point Formation, Sabine Peninsula, Melville Island, Nunavut–Northwest Territories; Geological Survey of Canada, Canadian Geoscience Map 166, scale 1:200 000.
- Duchesne, M.J., Brake, V.I., Dewing, K., Claprood, M., Gloaguen, E., and Brent, T.A., 2013. Time- and depth-structure map, Degerbøls Formation, Sabine Peninsula, Melville Island, Nunavut–Northwest Territories; Geological Survey of Canada, Canadian Geoscience Map 167, scale 1:200 000.
- Duchesne, M.J., Brake, V.I., Dewing, K., Claprood, M., Gloaguen, E., and Brent, T.A., 2013. Time- and depth-structure map, Great Bear Cape Formation, Sabine Peninsula, Melville Island, Nunavut–Northwest Territories; Geological Survey of Canada, Canadian Geoscience Map 168, scale 1:200 000.
- Evenchick, C.A. and Embry, A.F., 2012. Geology, Ellef Ringnes Island north, Nunavut; Geological Survey of Canada, Canadian Geoscience Map 86, scale 1:125 000.
- Evenchick, C.A. and Embry, A.F., 2012. Geology, Ellef Ringnes Island south, Nunavut; Geological Survey of Canada, Canadian Geoscience Map 87 (preliminary edition), scale 1:125 000.

Open Files

- Bédard, J.H., 2015. Regional study of HALIP sill geochemistry and economic potential; in 2015 report of activities for High Arctic large igneous province (HALIP)–GEM 2 Western Arctic region project, (ed.) K. Dewing; Geological Survey of Canada, Open File 7976, p. 20–23. <https://doi.org/10.4095/297371>

- Dewing, K. (ed.), 2015. 2015 report of activities for High Arctic large igneous province (HALIP)—GEM 2 Western Arctic region project. Geological Survey of Canada, Open File 7976, 61 p. <https://doi.org/10.4095/297367>
- Dewing, K., Grasby, S., Sanei, H., and Goodarzi, F., 2015. Influence of igneous intrusion on thermal maturity of organic matter in Arctic Canada; *in* 2015 report of activities for High Arctic large igneous province (HALIP)—GEM 2 Western Arctic region project, (ed.) K. Dewing; Geological Survey of Canada, Open File 7976, p. 40–49. <https://doi.org/10.4095/297367>
- Evenchick, C.A., Davis, W.J., Bédard, J.H., and Hayward, N., 2015. Mapping and geochronology of Isachsen through Hassel formations on Ellef Ringnes Island — implication for HALIP; *in* 2015 report of activities for High Arctic large igneous province (HALIP)—GEM 2 Western Arctic region project, (ed.) K. Dewing; Geological Survey of Canada, Open File 7976, p. 50–57. <https://doi.org/10.4095/297377>
- Galloway, J.M., Reinhardt, L., von Gosen, W., Piepjohn, K., Dolezych, M., Lückge, A., Gaedicke, C., Sudermann, M., West, C.K., and Greenwood, D.R., 2018. Multidisciplinary study of Paleogene–Neogene strata on Ellesmere Island, Nunavut: GEM-2 Western Arctic project, Pearya terrane activity; Geological Survey of Canada, Open File 8330, 11 p. <https://doi.org/10.4095/306343>
- Hadlari, T. and Issler, D.R., 2019. Late Cretaceous uplift of northern Axel Heiberg Island, Nunavut, revealed by apatite fission track data, and a schematic model related to Baffin Bay extension; Geological Survey of Canada, Open File 8494, 98 p. <https://doi.org/10.4095/313399>
- Kabanov, P.B. and Dewing, K.E., 2014. Geological and geochemical data from the Canadian Arctic Islands. Part XII: descriptions and lithologs of upper Paleozoic core; Geological Survey of Canada, Open File 7569, 121 p. <https://doi.org/10.4095/293754>
- MacLeod, R.F., Harris, J.R., Williamson, M.-C., and Kingsbury, C.G., 2015. Remote sensing datasets for mapping of HALIP rocks in the vicinity of East Fiord, western Axel Heiberg Island; *in* 2015 report of activities for High Arctic large igneous province (HALIP)—GEM 2 Western Arctic region project, (ed.) K. Dewing; Geological Survey of Canada, Open File 7976, p. 24–30. <https://doi.org/10.4095/297373>
- McNeil, R.J., 2015. Drainage geochemistry and indicator minerals, Axel Heiberg Island, Nunavut; *in* 2015 report of activities for High Arctic large igneous province (HALIP)—GEM 2 Western Arctic region project, (ed.) K. Dewing; Geological Survey of Canada, Open File 7976, p. 34–39. <https://doi.org/10.4095/297375>
- McNeil, R.J., Day, S.J.A., and Williamson, M.-C., 2018. Geochemical, mineralogical and indicator-mineral data for stream silt sediment, water and heavy-mineral concentrates, East Fiord area, western Axel Heiberg Island, Nunavut; Geological Survey of Canada, Open File 7779, 30 p. <https://doi.org/10.4095/306606>
- McNeil, R.J., Williamson, M.-C., and Wilton, D.H.C., 2020. Geochemical, mineralogical and indicator-mineral data for stream silt sediment, water, and heavy-mineral concentrates, Axel Heiberg Island, Nunavut (NTS 49-G, 59-H and 560-A); Geological Survey of Canada, Open File 8719, 29 p. <https://doi.org/10.4095/326018>
- Oakey, G.N. and Saltus, R.W., 2017. Geometry, structure and tectonic framework of the Alpha Ridge; *in* GEM 2 High Arctic large igneous province (HALIP) activity: workshop report, (ed.) M.-C. Williamson; Geological Survey of Canada, Open File 8151, p. 11–15. <https://doi.org/10.4095/300703>
- Saumur, B.M., 2015. HALIP legacy samples, part I — the Ottawa collection; *in* 2015 report of activities for High Arctic large igneous province (HALIP)—GEM 2 Western Arctic region project, (ed.) K. Dewing; Geological Survey of Canada, Open File 7976, p. 9–16. <https://doi.org/10.4095/297369>
- Saumur, B.M., Williamson, M.-C., and Evenchick, C.A., 2015. Volcanic-intrusive complexes of western Axel Heiberg Island; *in* 2015 report of activities for High Arctic large igneous province (HALIP)—GEM 2 Western Arctic region project, (ed.) K. Dewing; Geological Survey of Canada, Open File 7976, p. 31–33. <https://doi.org/10.4095/297374>
- Saumur, B.M., Williamson, M.-C., Muecke, A., and Muecke, G., 2015. HALIP legacy samples, part II — the Dalhousie collection; *in* 2015 report of activities for High Arctic large igneous province (HALIP)—GEM 2 Western Arctic region project, (ed.) K. Dewing; Geological Survey of Canada, Open File 7976, p. 17–19. <https://doi.org/10.4095/297370>
- Williamson, M.-C. (ed.), 2016. Report of activities for High Arctic large igneous province (HALIP)—GEM 2 Western Arctic region project: bedrock mapping and mineral exploration; Geological Survey of Canada, Open File 7950 (revised), 48 p. <https://doi.org/10.4095/297781>
- Williamson, M.-C. (ed.), 2017. GEM 2 High Arctic large igneous province (HALIP) activity: workshop report; Geological Survey of Canada, Open File 8151, 60 p. <https://doi.org/10.4095/300690>
- Williamson, M.-C. and MacRae, R.A., 2015. Mineralization potential in volcanic rocks of the Strand Fiord Formation and associated intrusions, Axel Heiberg Island, Nunavut, Canada; Geological Survey of Canada, Open File 7981, 34 p. <https://doi.org/10.4095/297365>
- Williamson, M.-C., Saumur, B.-M., Grasby, S.E., and Hadlari, T., 2017. Field studies of High Arctic large igneous province (HALIP) intrusions, Axel Heiberg Island and Ellesmere Island, Nunavut (GEM-2 report of activities, Western Arctic region); Geological Survey of Canada, Open File 8169, 13 p. <https://doi.org/10.4095/306303>
- Wilton, D.H.C., Williamson, M.-C., and McNeil, R.J., 2017. Quantitative MLA-SEM modal mineralogy of gossans and stream sediments in the HALIP: implications for economic potential; *in* GEM 2 High Arctic large igneous province (HALIP) activity: workshop report, (ed.) M.-C. Williamson; Geological Survey of Canada, Open File 8151, p. 45–50. <https://doi.org/10.4095/300712>

Scientific Presentation

- Saumur, B.M., Williamson, M.-C., Bédard, J.H., Dewing, K., and Evenchick, C.A., 2017. GEM-2: multiscale architecture and Ni-Cu-PGE prospectivity of the High Arctic large igneous province (HALIP); Geological Survey of Canada, Scientific Presentation 72, 29 p. <https://doi.org/10.4095/305827>