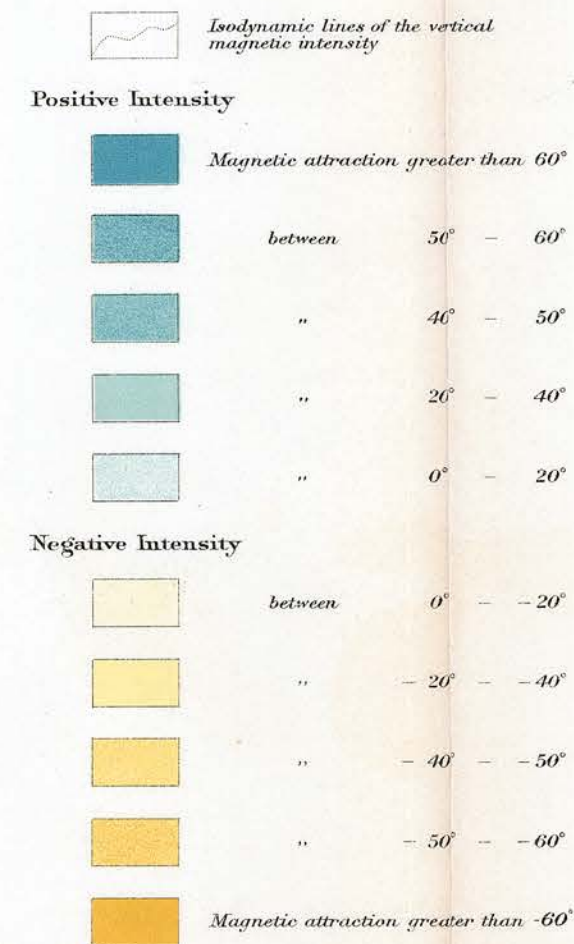


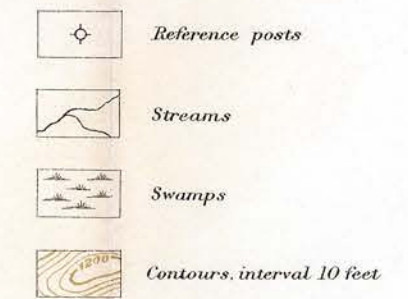
MAGNETOMETRIC MAP

DEPOSIT N° 11
MOOSE MOUNTAIN IRON BEARING DISTRICT
HUTTON TOWNSHIP, SUDBURY DISTRICT
ONTARIO

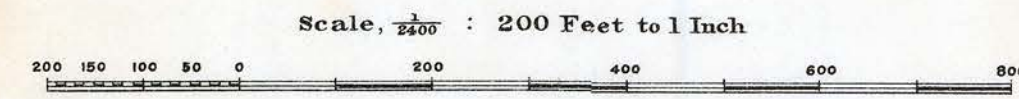
LEGEND



LEGEND

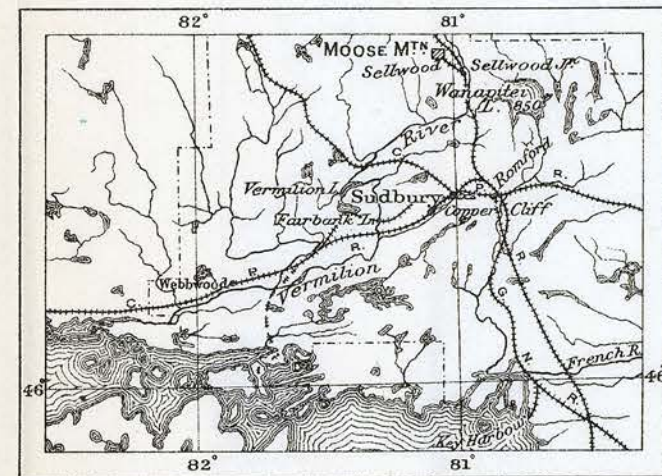
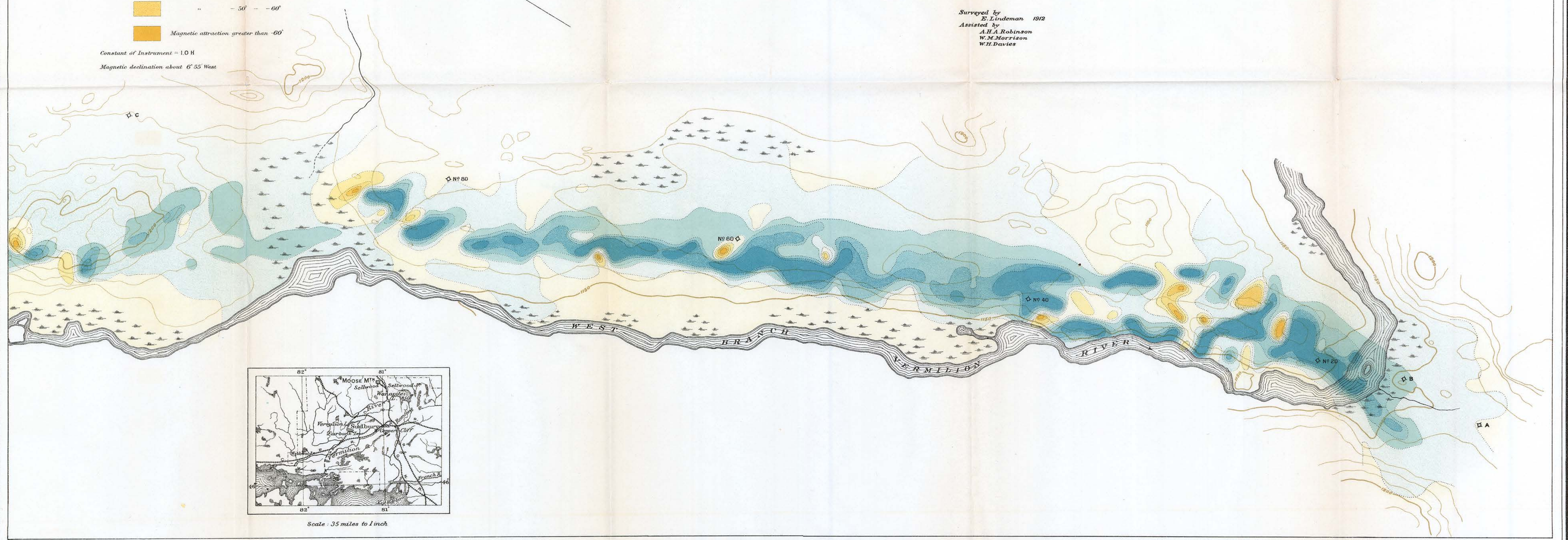


Contours showing heights above sea-level based on an elevation supplied by the Moose Mountain Limited.



Surveyed by
E. Lindeman 1912
Assisted by
A.H.A. Robinson
W.M. Morrison
W.H. Davies

Mines Sheet No. 208 A



Scale: 35 miles to 1 inch