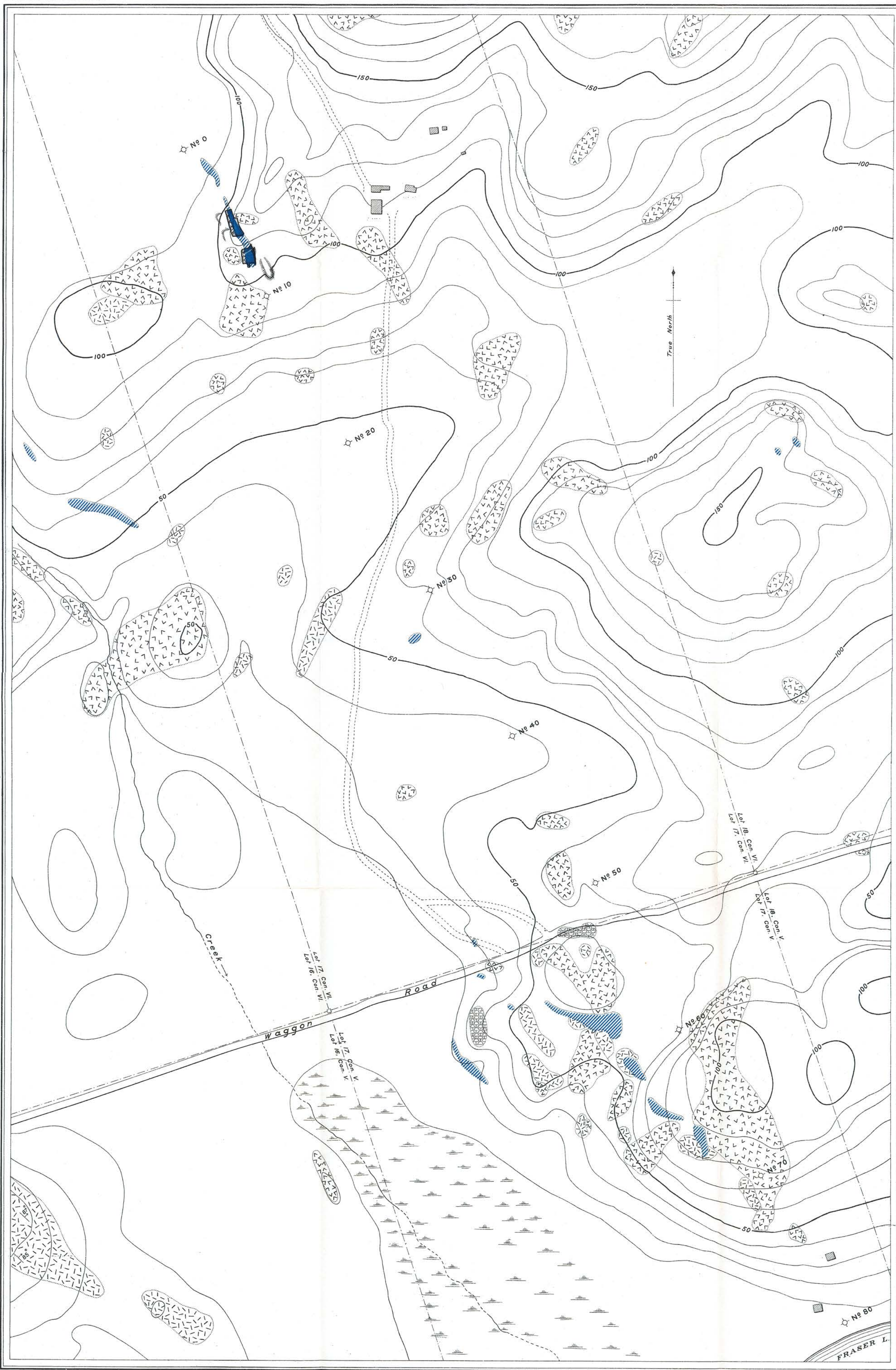


Canada
DEPARTMENT OF MINES
MINES BRANCH

HON. ROBERT ROGERS, MINISTER; A.P. LOW, LL.D., DEPUTY MINISTER
 EUGENE HAANEL, PH.D., DIRECTOR

GEOLOGICAL MAP



LEGEND

- Drift-covered area.
- Outcrop of Magnetite
- Drift-covered area within which Magnetite is likely to occur, indicated by Magnetometric Survey
- Granites and pegmatite (Archaean)
- Mica and hornblende schists "
- Crystalline limestone "
- Strike and dip

LEGEND

- Roads and buildings
- Corner posts and Lot lines
- Reference posts
- Strippings
- Swamps
- Contours, interval 10 feet. Elevations above level of Fraser Lake
- Mine dumps

H. E. Baine, Chief Draughtsman
 L. H. S. Pereira, Draughtsman

IRON ORE DEPOSITS
 LOTS 16, 17, 18, CON. VI AND LOT 17 CON. V
 CARLOW TOWNSHIP
 ONTARIO

Scale 2400 - 200' to 1 Inch

Geology by
 E. Lindeman 1911

NO. 193A

This document was produced by scanning the original publication.

Ce document est le produit d'une numérisation par balayage de la publication originale.