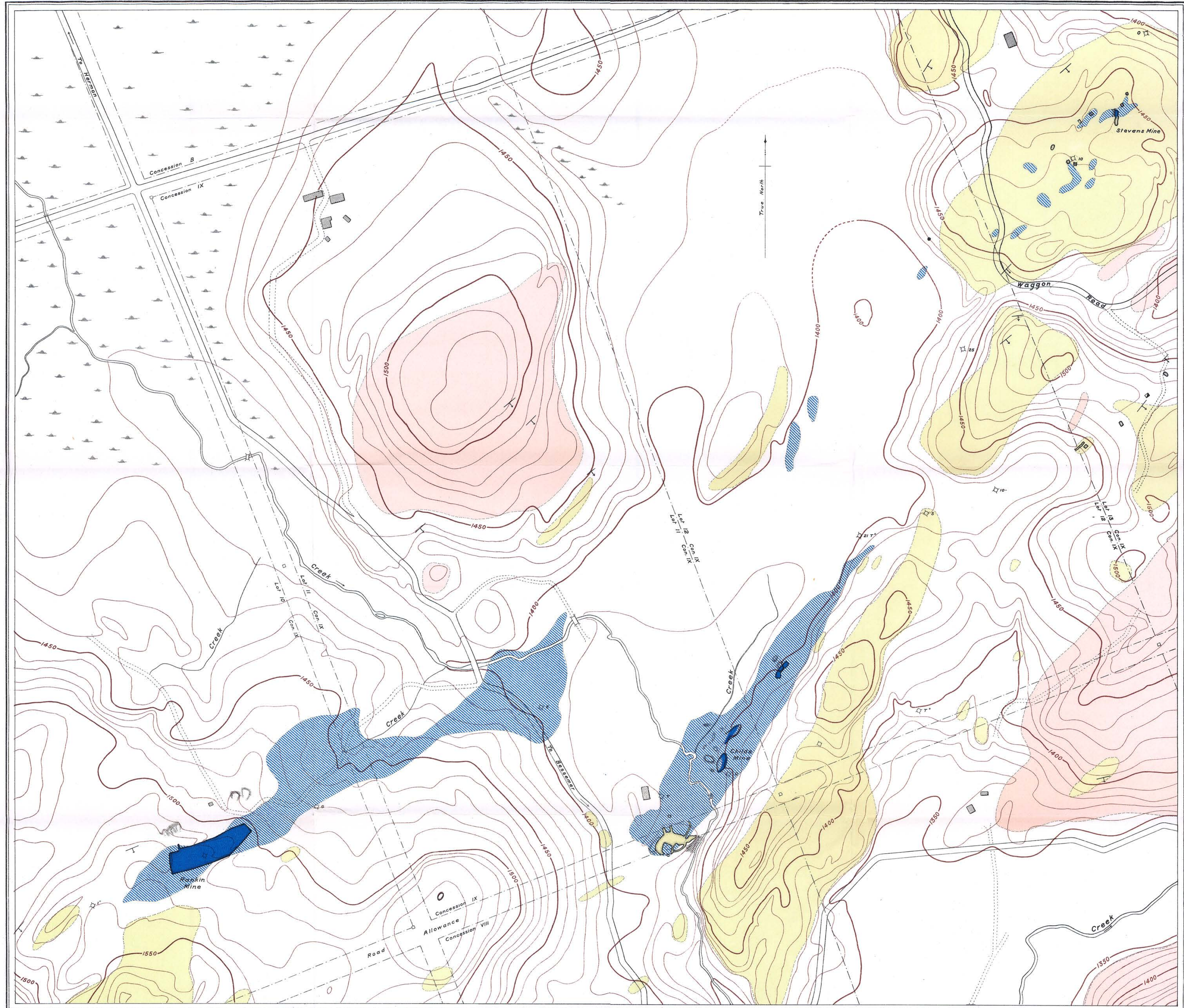


Canada
DEPARTMENT OF MINES
MINES BRANCH

HON. ROBERT ROGERS, MINISTER: A.P. LOW, LL.D., DEPUTY MINISTER
 EUGENE HAANEL, PH.D., DIRECTOR

GEOLOGICAL MAP



LEGEND

- Drift-covered area
- Outcrop of Magnetite
- Drift-covered area, within which Magnetite is likely to occur, indicated by Magnetometric Survey
- Crystalline limestone Schists (Archaean) and amphibolites
- Granite and granitogneiss
- Strike and dip

LEGEND

- Roads and buildings
- Corner posts and Lot lines
- Reference posts
- Bridges
- Shafts
- Open cuts and Test pits
- Strippings
- Swamps
- Contours, interval 10 feet Elevations above sea-level
- Mine dumps

H. B. Baine, Chief Draughtsman
 L. H. S. Pereira, Draughtsman

RANKIN, CHILDS AND STEPHENS IRON ORE DEPOSITS
LOTS 10, 11, 12 AND 13, CON. IX
TOWNSHIP OF MAYO
HASTINGS COUNTY
ONTARIO

Geology by
 E. Lindeman 1911

NO. 192 A

Scale 2400' to 1 inch

This document was produced by scanning the original publication. Ce document est le produit d'une numérisation par balayage de la publication originale.