




MAGNETOMETRIC MAP


LEGEND


 *Isodynamic lines of the vertical magnetic intensity*

Positive Intensity

 *Magnetic attraction greater than 60°*

 *between 50° - 60°*

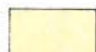
 *" 40° - 50°*

 *" 20° - 40°*

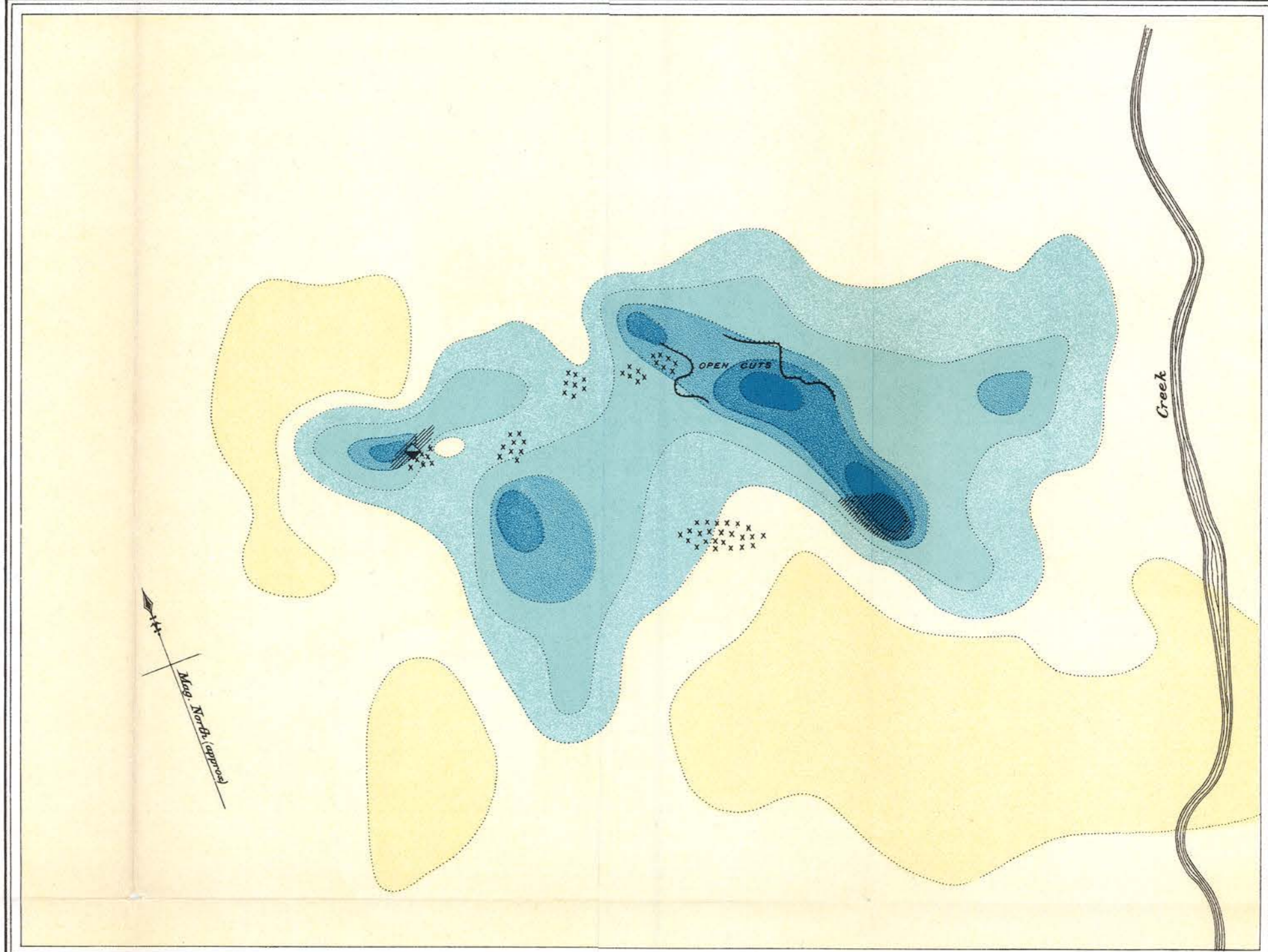
 *" 0° - 20°*

Negative Intensity

 *between 0° - -20°*

 *" -20° - -40°*


Magnetic declination 25° East (approx)



LEGEND

 *Shaft*

 *Open cuts*

 *Outcrop of magnetite*

 *Outcrop of granite*

*H. E. Baine, Chief Draughtsman
 D. Westwood, Draughtsman*

WESTERN STEEL IRON CLAIM
 SECHART, VANCOUVER ISLAND, B. C.

*Surveyed by
 E. Lindeman, 1908*

438

Scale - 60 Feet to Inch.