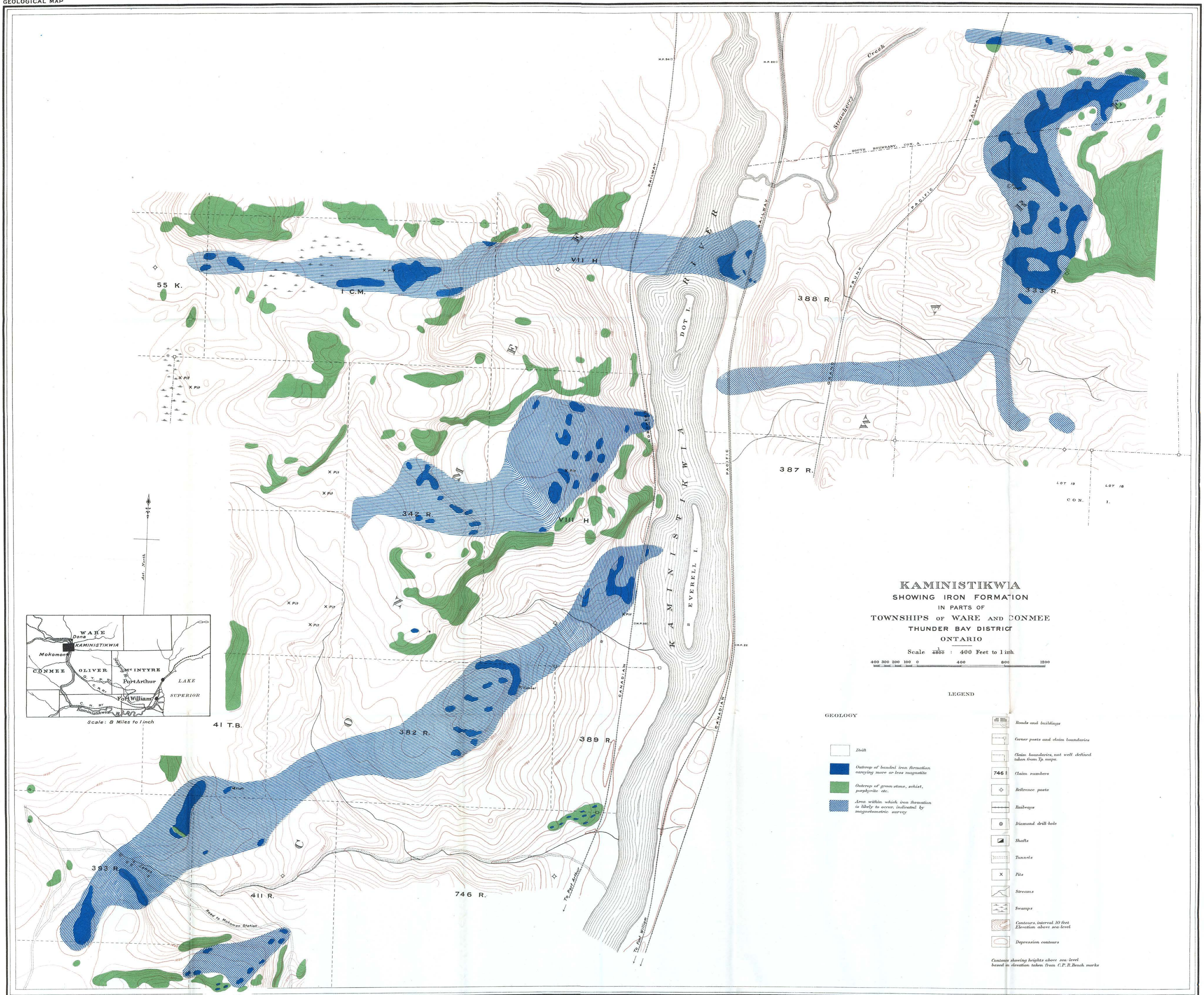


GEOLOGICAL MAP



KAMINISTIKWIA
 SHOWING IRON FORMATION
 IN PARTS OF
 TOWNSHIPS OF WARE AND CONMEE
 THUNDER BAY DISTRICT
 ONTARIO
 Scale 4000 : 400 Feet to 1 inch

GEOLOGY

- Iron
- Outcrop of banded iron formation varying more or less magnetite
- Outcrop of green stone, schist, porphyrite etc.
- Area within which iron formation is likely to occur, indicated by magnetometric survey

LEGEND

- Roads and buildings
- Corner posts and claim boundaries
- Claim boundaries, not well defined taken from T.p. maps
- Claim numbers
- Reference posts
- Railways
- Diamond drill hole
- Shafts
- Tunnels
- Pits
- Streams
- Swamps
- Contours, interval 10 feet
Elevation above sea-level
- Depression contours

Contours showing heights above sea-level based on elevation taken from C.P.R. Bench marks

H.E. Bates, Chief Draughtsman
 L.H.S. Pereira, Draughtsman

Geology
 A.H.A. Robinson, 1914-15

This document was produced by scanning the original publication.
 Ce document est le produit d'une numérisation par balayage de la publication originale.