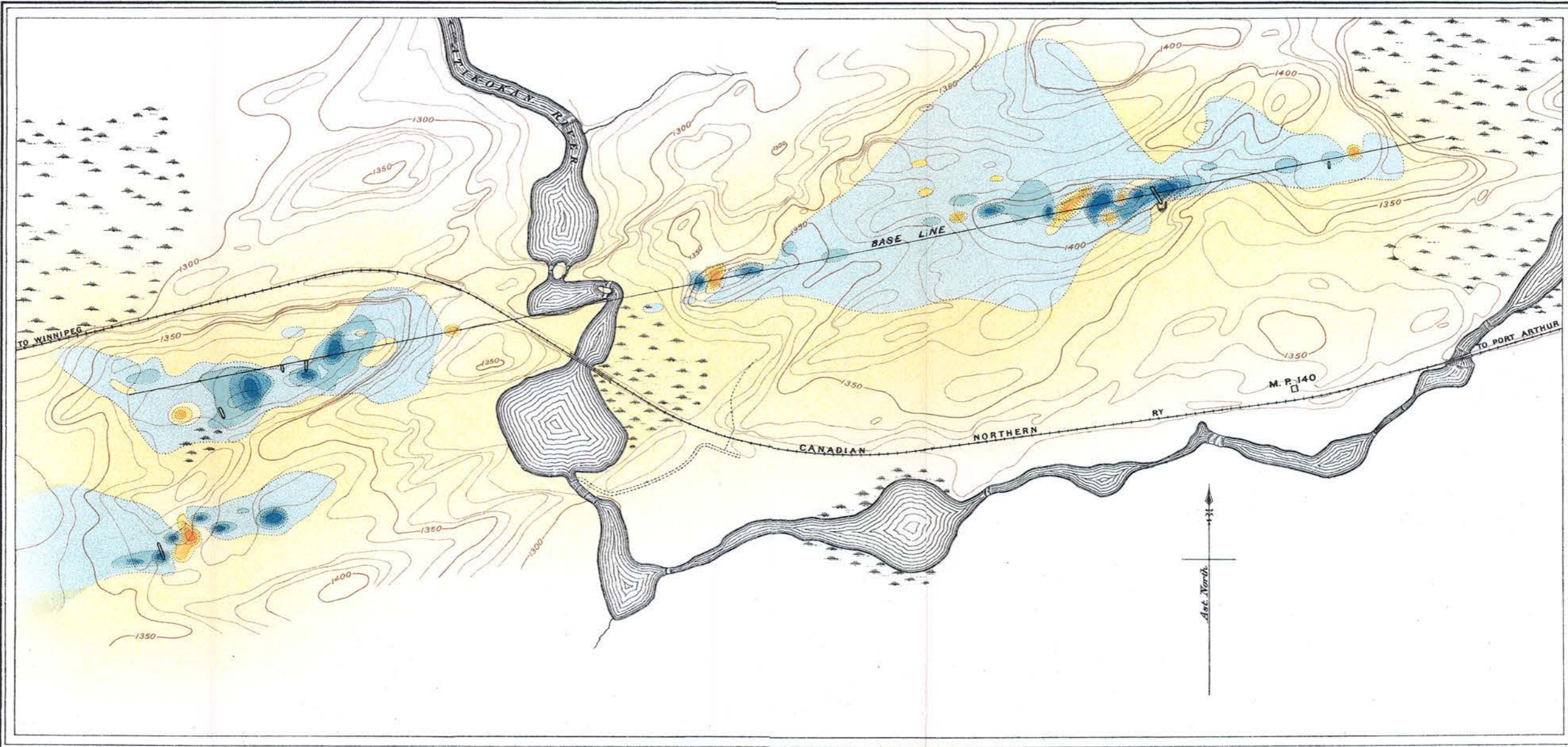


MAGNETOMETRIC MAP



LEGEND

- Isodynamic lines of the vertical magnetic intensity
- Positive Intensity**
- Magnetic attraction greater than 60°
 - between 50° - 60°
 - " 40° - 50°
 - " 20° - 40°
 - " 0° - 20°
- Negative Intensity**
- between 0° - -20°
 - " -20° - -40°
 - " -40° - -50°
 - " -50° - -60°
 - Magnetic attraction greater than -60°
- Constant of Instrument = 1.0 H
 Magnetic declination about 6° East

LEGEND

- Road and Trail
- Railways
- Bridges
- Trenches and Strippings
- Streams
- Swamps
- Contours, interval 10 feet
Elevation above sea-level
- Mine dumps

Contours showing heights above sea-level based on elevation taken from C.N.R.

H. E. Baine, Chief Draughtsman
 D. Westwood, Draughtsman

ATIKOKAN IRON-BEARING DISTRICT
 MILE POST 140, CANADIAN NORTHERN RAILWAY
 RAINY RIVER DISTRICT
 ONTARIO

Surveyed by E. Lindeman, 1914
 Assisted by M. Meikle



This document was produced by scanning the original publication.
 Ce document est le produit d'une numérisation par balayage de la publication originale.