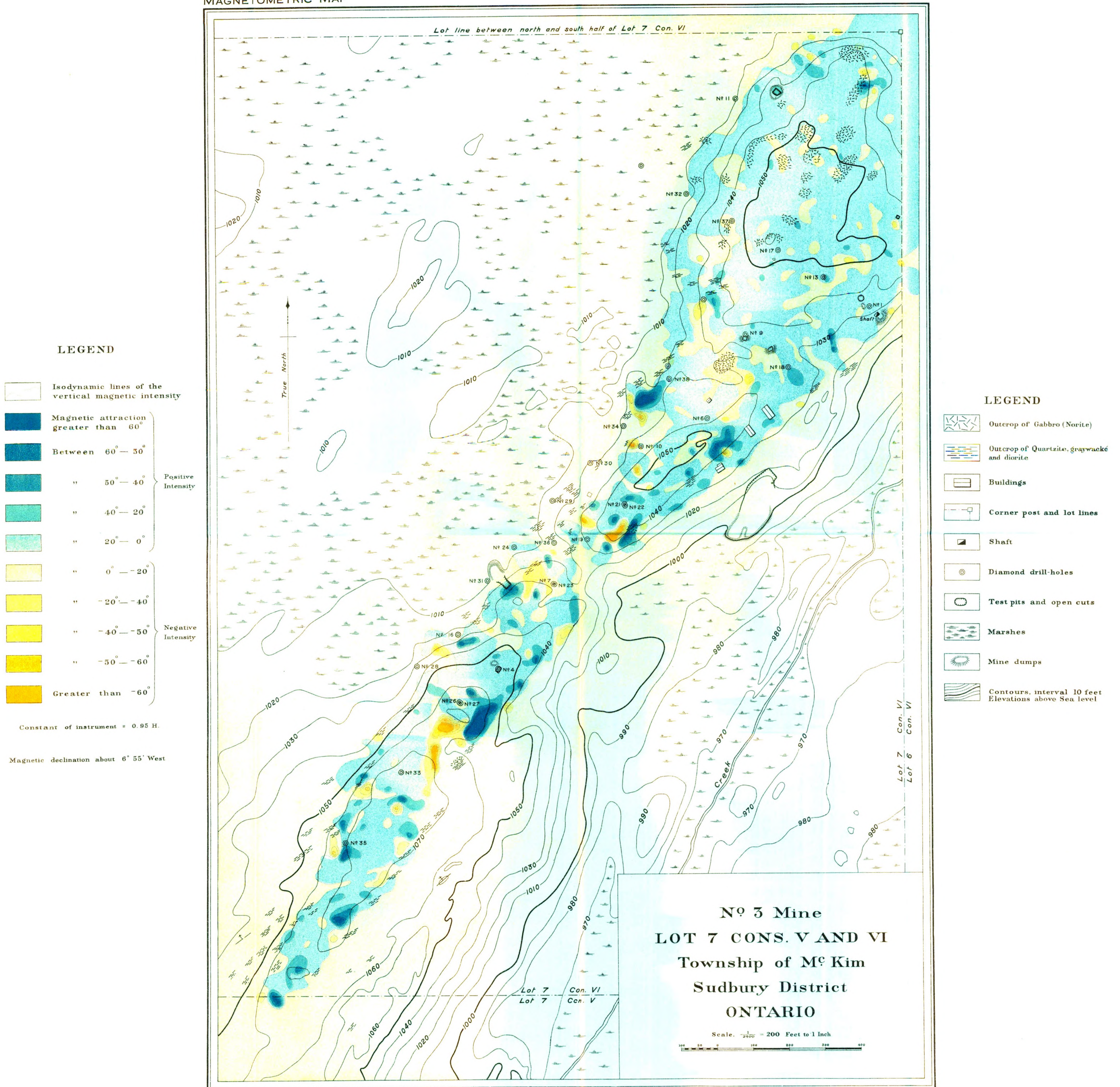


CANADA  
DEPARTMENT OF MINES  
MINES BRANCH

HON. W. B. NANTEL, MINISTER, A. P. LOW, LL.D., DEPUTY MINISTER,  
EUGENE HAANEL, PH.D., DIRECTOR  
1912

MAGNETOMETRIC MAP



L. H. S. Pereira, Draughtsman  
H. E. Boine, Chief Draughtsman

Surveyed by E. Lindeman, 1911  
assisted by N. D. Bothwell

NO. 166