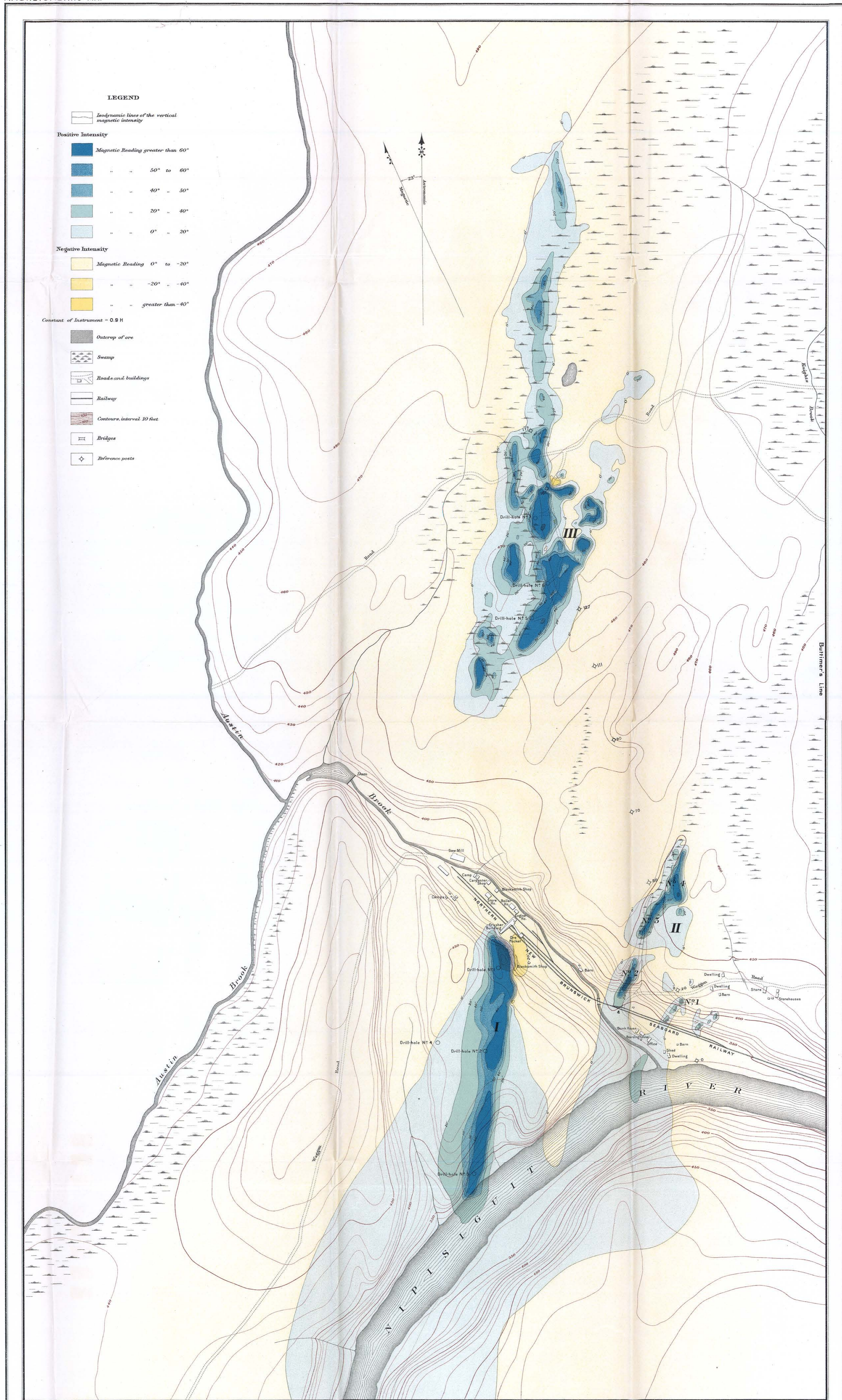


Canada  
DEPARTMENT OF MINES  
MINES BRANCH

Hon. W. B. NANTL, MINISTER; A. P. LOW, LL.D., DEPUTY MINISTER  
EUGENE HAANEL, PH.D., DIRECTOR

MAGNETOMETRIC MAP



LEGEND

Isodynamic lines of the vertical magnetic intensity

Positive Intensity

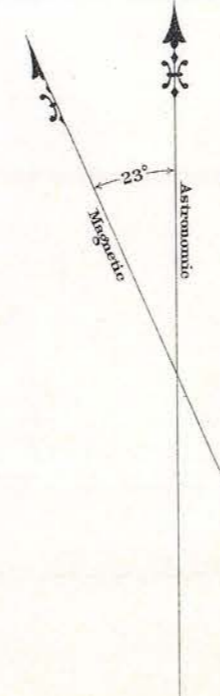
- Magnetic Reading greater than 60°
- " " 50° to 60°
- " " 40° to 50°
- " " 20° to 40°
- " " 0° to 20°

Negative Intensity

- Magnetic Reading 0° to -20°
- " " -20° to -40°
- " " greater than -40°

Constant of Instrument = 0.9 H

- Outcrop of ore
- Swamp
- Roads and buildings
- Railway
- Contours, interval 10 feet
- Bridges
- Reference posts



AUSTIN BROOK  
IRON BEARING DISTRICT  
GLOUCESTER COUNTY  
NEW BRUNSWICK

Surveyed by E. Lindeman, 1910  
Assisted by W.M. Morrison

This document was produced by scanning the original publication. Ce document est le produit d'une numérisation par balayage de la publication originale.

Scale: 400 Feet to 1 Inch = 3200 Feet