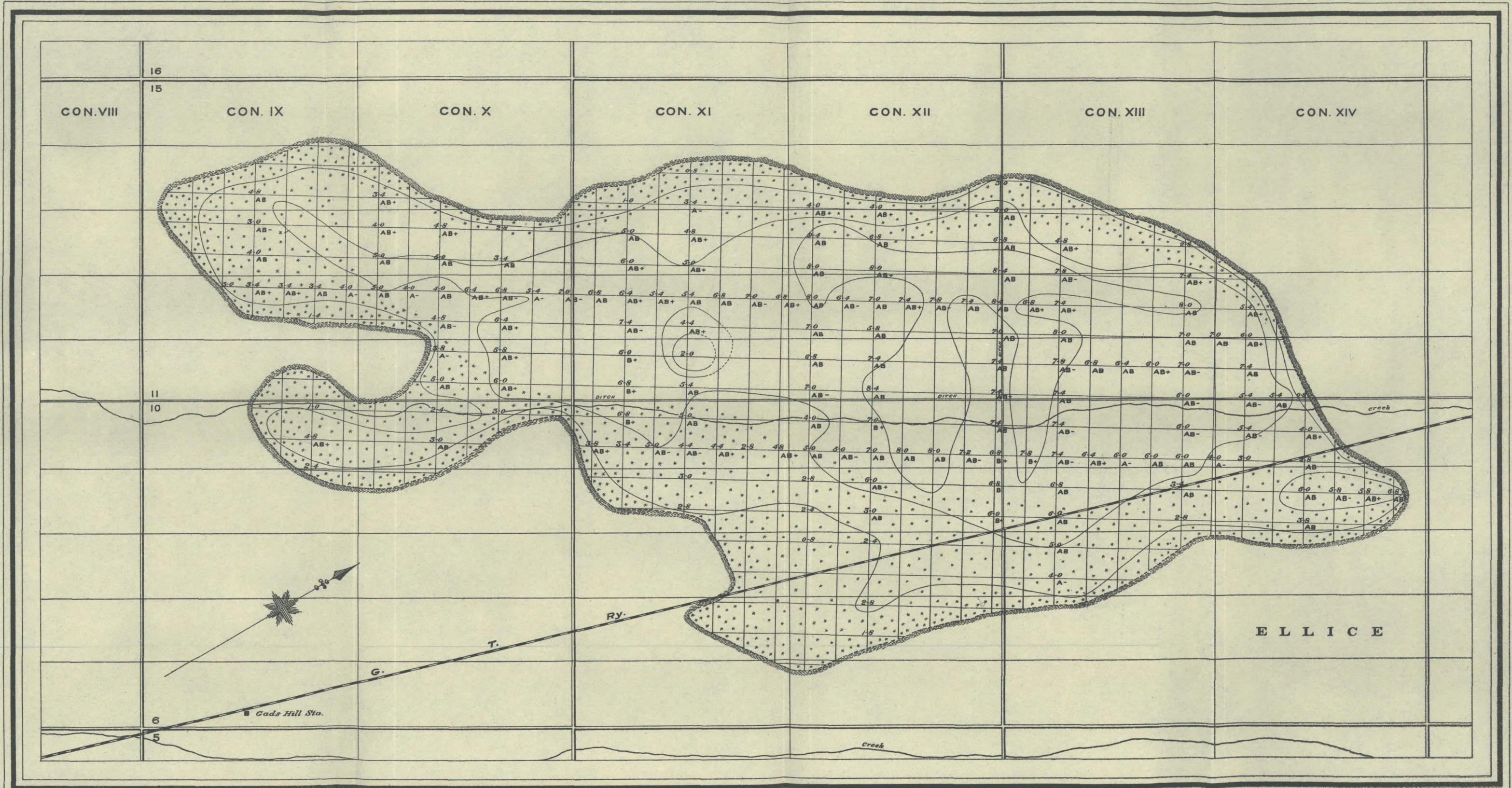
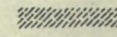
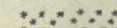


THE BRUNNER PEAT BOG



H. E. Baine, Chief Draughtsman

 Margin of bog
 Heavily wooded areas

Scale of feet



To accompany Bulletin No. 4, (Second Edition)—Map No. 72.
 "Investigation of Peat Bogs and Peat Industry of
 Canada," Report No. 196, September 21, 1910.