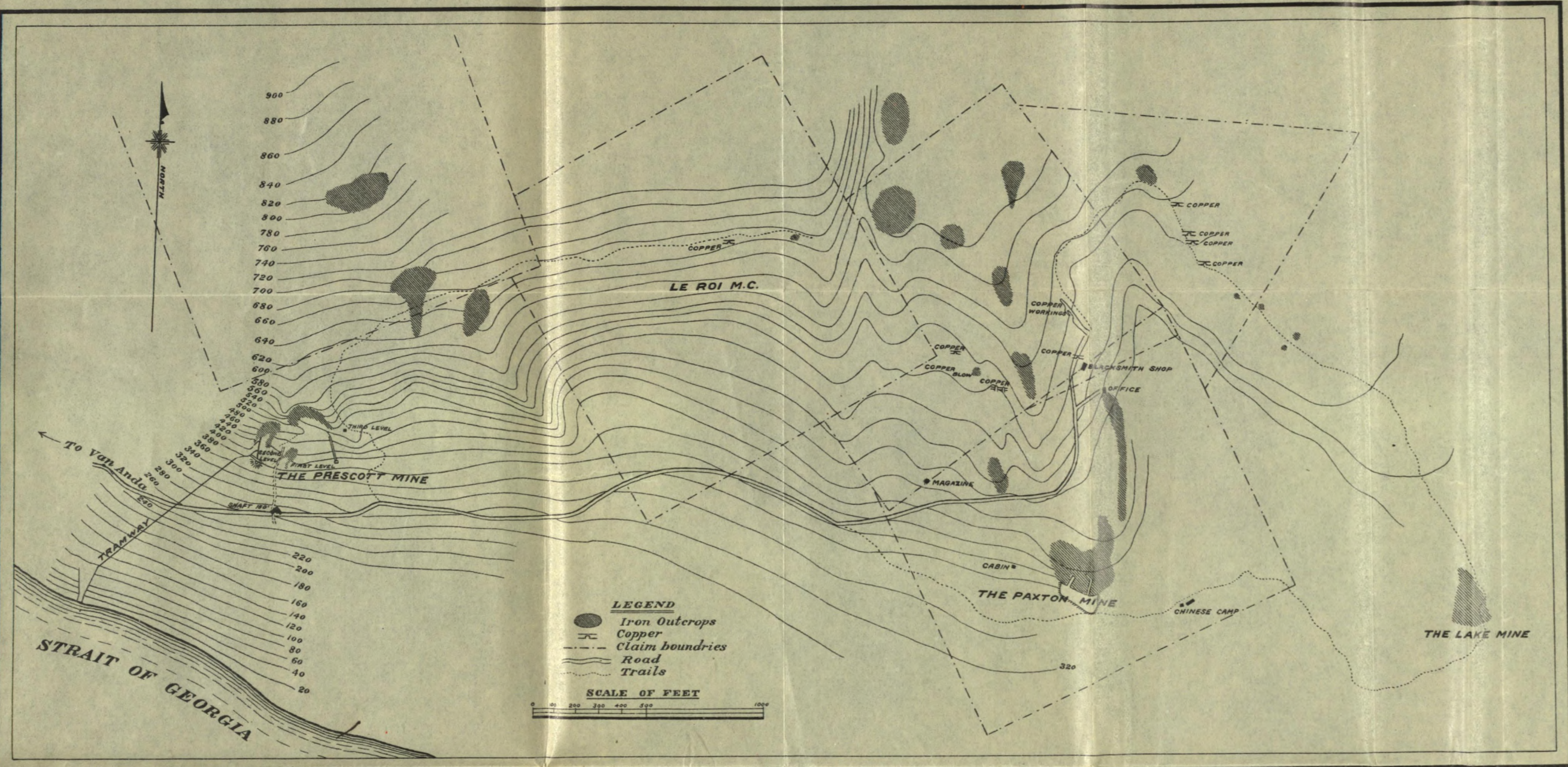


CANADA  
DEPARTMENT OF MINES  
MINES BRANCH

HON. W. TEMPLEMAN, MINISTER; A. P. LOW, LL.D., DEPUTY MINISTER;  
EUGENE HAANEL, PH.D., DIRECTOR.

*orig. a rough tracing  
in draw # 8*



TO ACCOMPANY REPORT No. 47, ON THE IRON ORE DEPOSITS OF VANCOUVER AND TEXEDA ISLANDS, B.C., 1908, BY EINAR LINDEMAN, M.E.

Map of the Iron Mines, Texada Island B.C. by Mr. F.H. Shepherd, C.E.

No. 51