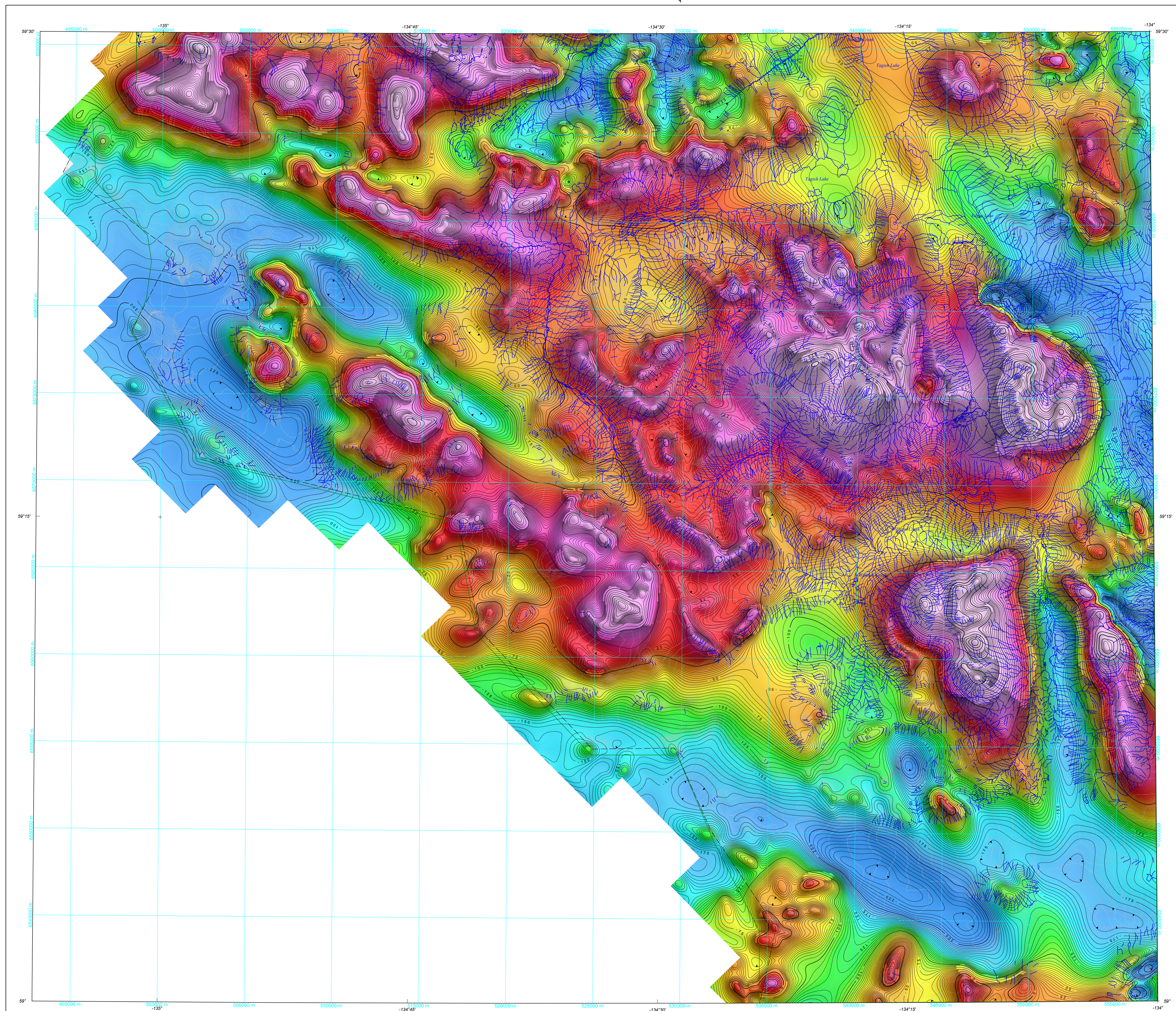


RESIDUAL TOTAL MAGNETIC FIELD



Residual Total Magnetic Field

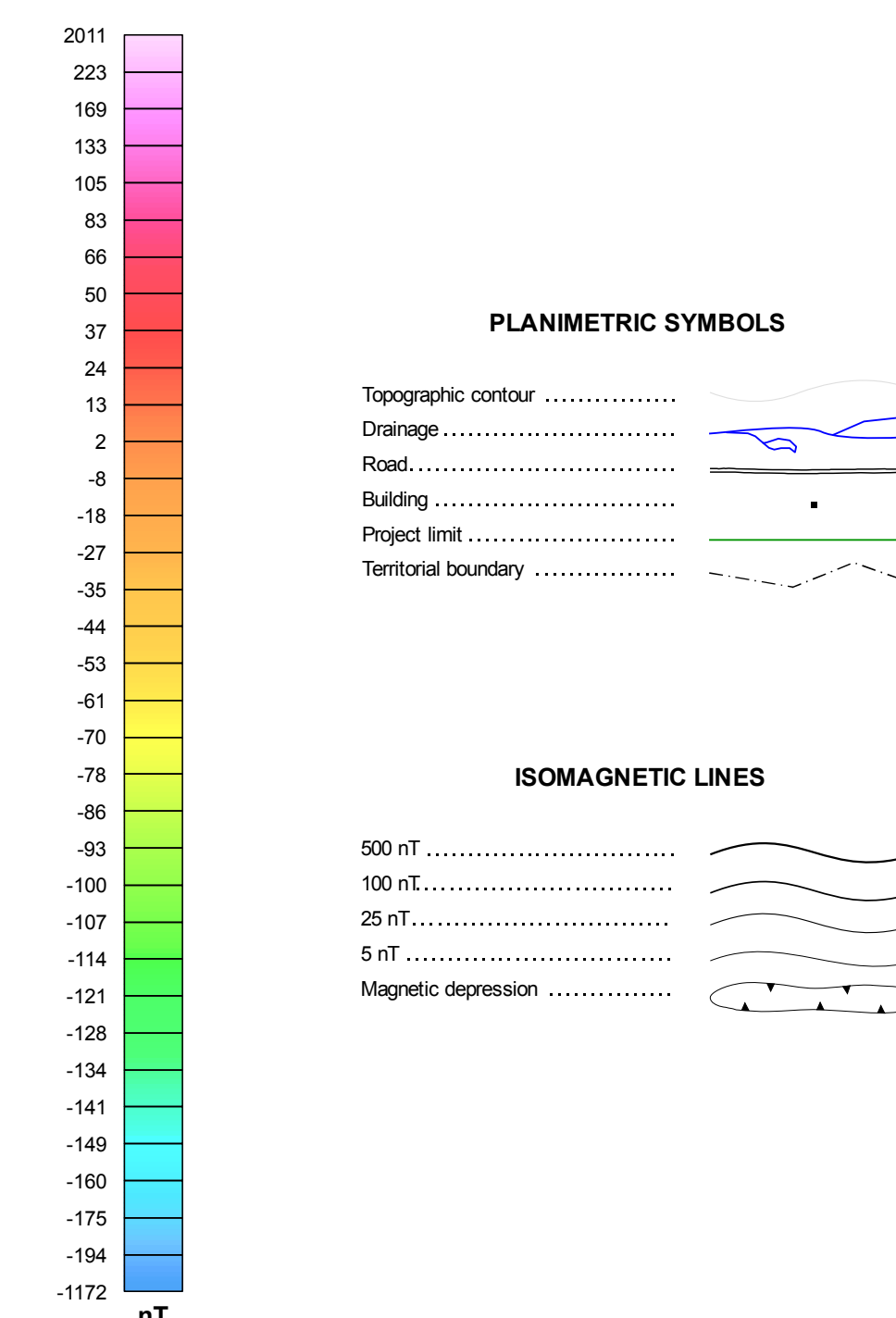
This map of the residual total magnetic field was derived from data acquired during an aeromagnetic survey carried out by Goldak Airborne Surveys from March 10, 2017 to July 6, 2017. The normal traverse and control line spacings were, respectively, 400 m and 2400 m, and the airplane flew at a nominal terrain clearance of 150 m. Traverse lines were oriented N45°E with orthogonal control lines. The flight path was recovered following post-flight differential corrections to the raw Global Positioning System (GPS) data and inspection of ground images recorded by a vertically-mounted video camera. The survey was flown on a pre-determined flight surface to minimize differences in magnetic values at the intersections of control and traverse lines. These differences were computer-analysed to obtain a mutually levelled set of flight-line magnetic data. The levelled values were then interpolated to a 100 m grid. The International Geomagnetic Reference Field (IGRF) defined at the average GPS altitude of 1950 m for the current mid-survey date of 2017/06/03 was removed. Removal of the IGRF, representing the magnetic field of the Earth's core, produces a residual component related almost entirely to magnetizations within the Earth's crust.

This publication is available for free download through GEOSCAN (<http://geoscan.nrcan.gc.ca/>). Corresponding digital profile and gridded data as well as similar data for adjacent airborne geophysical surveys are available from Natural Resources Canada's Geoscience Data Repository for Geophysical Data at http://gdr.agg.nrcan.gc.ca/index_e.html. The same products are also available, for a fee, from the Geophysical Data Centre, Geological Survey of Canada, 601 Booth Street, Ottawa, Ontario K1A 0E8. Telephone: (613) 947-3337, email: NRCan.infogis-infogis.FN.Can@canada.ca.

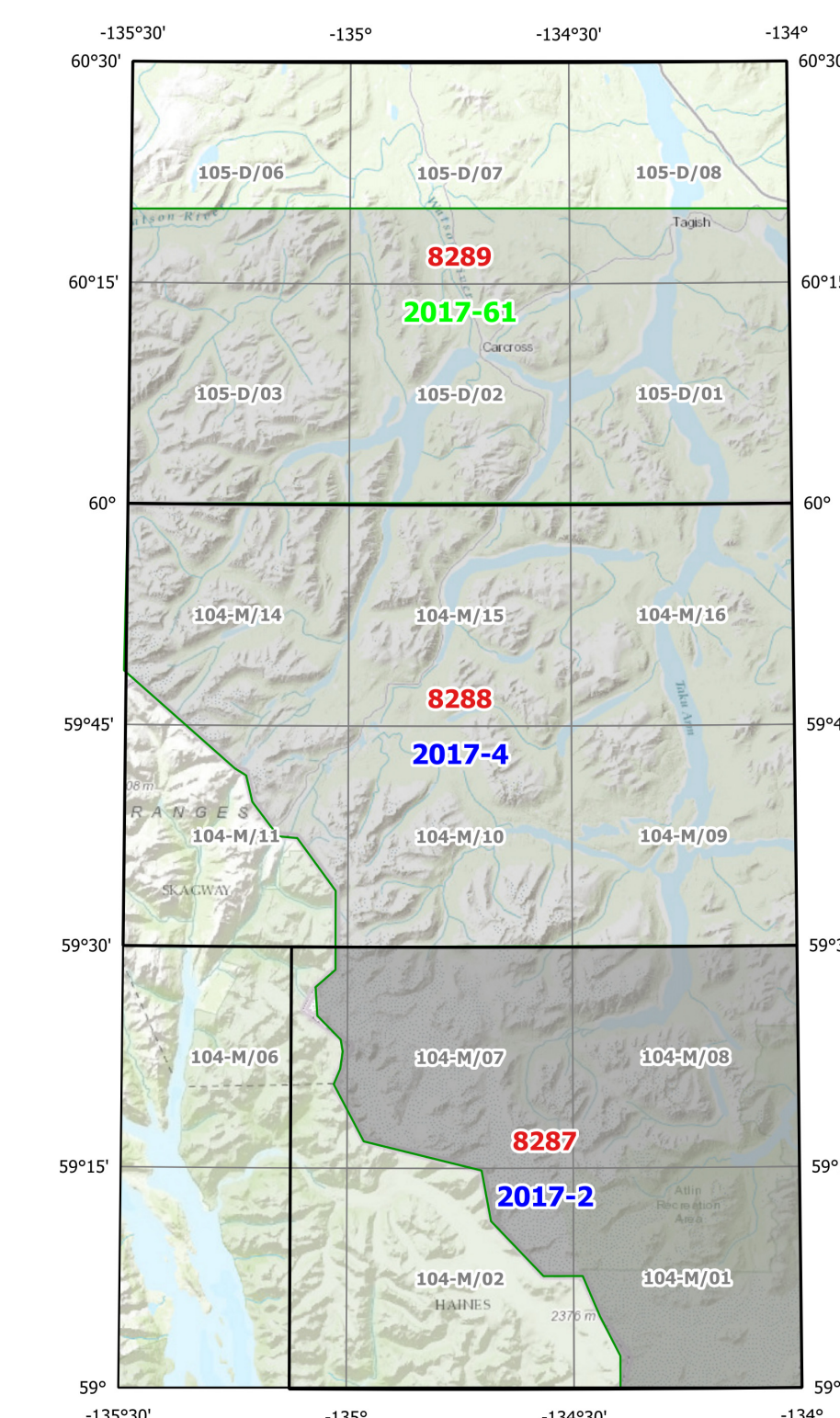
These data are also available for free download from the British Columbia Geological Survey, <http://www.bcgov.ca/mining/geoscience/pages/default.aspx>, P.O. Box 9333 Stn Prov Govt, Victoria, BC, V8W 9N3. Telephone: (250) 952-0372, email: Geological.Survey@gov.bc.ca.

Acknowledgements

The authors thank Bill Heath and Glen Carson at Goldak Airborne Surveys for their cooperation during the survey. The authors thank Maurice Coyne and Richard Fortin for their participation in the project, and Mark Pilkington and Natalie Morisset for editing and helpful suggestions to improve the maps.



GSC Open File Numbers in Red
BCGS Geoscience Map Numbers in Blue
YGS Open File Numbers in Green



This aeromagnetic survey and the production of this map were funded by Phase 2 of the Geo-Mapping for Energy and Minerals program (GEM-2 Cordillera Project) of the Lands and Minerals Sector, Natural Resources Canada.

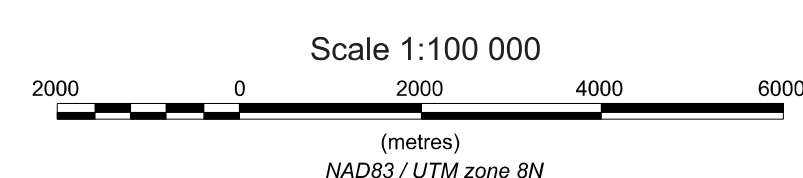
GEOLOGICAL SURVEY OF CANADA OPEN FILE 8287
BRITISH COLUMBIA GEOLOGICAL SURVEY GEOSCIENCE MAP 2017-2, SHEET 1 OF 2

RESIDUAL TOTAL MAGNETIC FIELD

AEROMAGNETIC SURVEY OF THE LLEWELLYN AREA

NTS 104-M/8 and parts of 104-M/1, 2, 6, 7
BRITISH COLUMBIA

Authors: O. Boulanger and F. Kiss
Data acquisition, data compilation and map production by
Goldak Airborne Surveys, Saskatoon, Saskatchewan.
Contract and project management by
the Geological Survey of Canada, Ottawa, Ontario.
Permanent link: <https://doi.org/10.4095/305322>



Universal Transverse Mercator Projection
North American Datum 1983, as represented by the NAD83
Other Maps: the Queen in Right of Canada, as represented by the Minister of Natural Resources, 2017
Digital topographic data from Natural Resources Canada



OPEN FILE
DOSSIER PUBLIC
8287
GEOLOGICAL SURVEY OF CANADA
COMMISSION GEOLOGIQUE DU CANADA
2017

Publications in this series
have not been edited,
they are released as
submitted by the author.

Les publications de cette
série ne sont pas révisées;
elles sont publiées telles
qu'elles sont soumises par l'auteur.

GEOSCIENCE MAP
2017-2
BRITISH COLUMBIA GEOLOGICAL SURVEY
2017

SHEET 1
2
MAP SHEET SUMMARY
Residual Total Magnetic Field
First Vertical Derivative of the Magnetic Field

AEROMAGNETIC SURVEY OF THE LLEWELLYN AREA

Recommended Citation for BCGS Publication

Boulanger, O., and Kiss, F., 2017.
Aeromagnetic Survey of the Llewellyn Area,
NTS 104-M/8 and parts of 104-M/1, 2, 6, 7, British Columbia,
British Columbia Ministry of Energy and Mines,
British Columbia Geological Survey Geoscience Map 2017-2,
Sheet 1 of 2, Residual Total Magnetic Field

Recommended Citation for GSC Publication

Boulanger, O., and Kiss, F., 2017.
Residual Total Magnetic Field
Aeromagnetic Survey of the Llewellyn Area,
NTS 104-M/8 and parts of 104-M/1, 2, 6, 7, British Columbia,
Geological Survey of Canada, Open File 8287,
Scale 1:100 000. <https://doi.org/10.4095/305322>