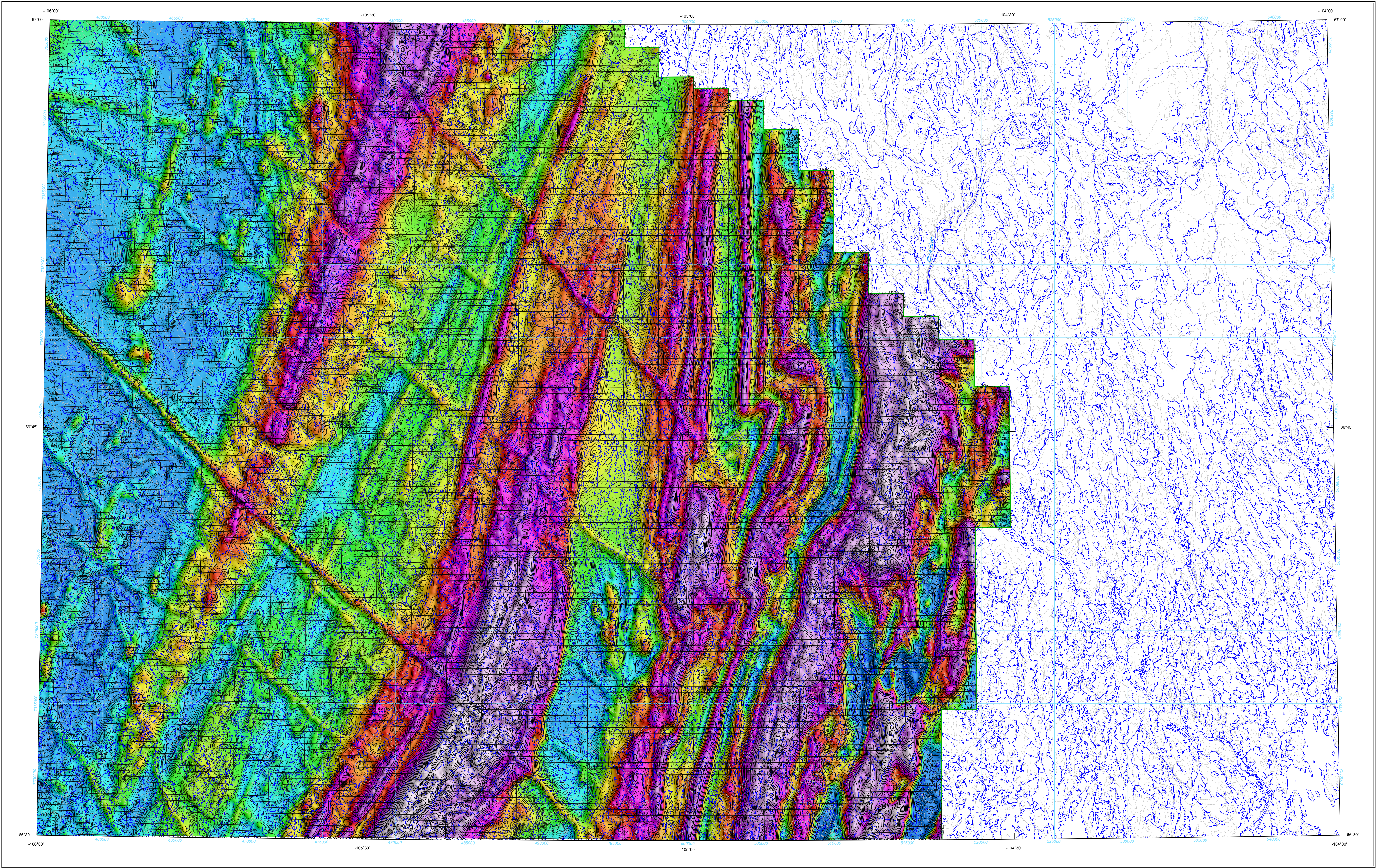


RESIDUAL TOTAL MAGNETIC FIELD



TOPOGRAPHIC CONTOUR INTERVAL: 30 METRES
This aeromagnetic survey and the production of this map were funded by phase 2 of the Geo-mapping for Energy and Minerals (GEM-2) program of the Lands and Minerals Sector, Natural Resources Canada.

Author: M. Coyle
Data acquisition, data compilation and map production by
Geo Data Solutions GDS Inc., Laval, Quebec.
Contract and project management by
the Geological Survey of Canada, Ottawa, Ontario.
Cartographic design by A. Seneff.
<https://doi.org/10.4095/904674>

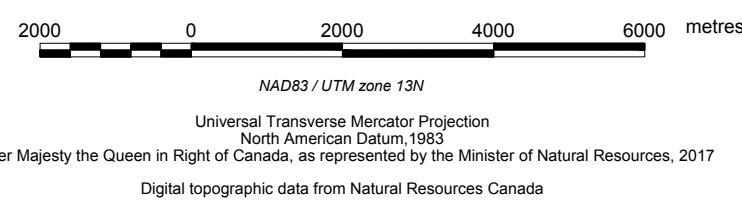
GEOLOGICAL SURVEY OF CANADA OPEN FILE 8282

RESIDUAL TOTAL MAGNETIC FIELD

AEROMAGNETIC SURVEY OF THE OVERBY-DUGGAN AREA

Part of NTS 76-I North

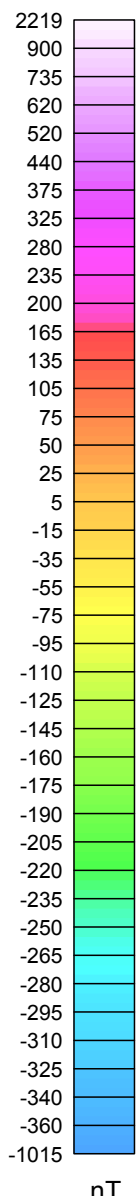
NUNAVUT
Scale 1:100 000



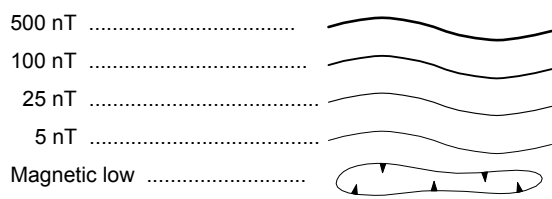
Residual Total Magnetic Field

This map of the residual total magnetic field was derived from data acquired during an aeromagnetic survey carried out by Geo Data Solutions GDS Inc. from March 10, 2017 to March 28, 2017. The data were recorded using a split-beam cesium vapour magnetometer (sensitivity = 0.005 nT) mounted in the tail boom of a Beechcraft KingAir 100 aircraft (C-FLRB). The nominal traverse and control line spacings were, respectively, 400 m and 2400 m, and the aircraft flew at a nominal terrain clearance of 150 m. Traverse lines were oriented N50°E with orthogonal control lines. The flight path was recovered following post-flight differential corrections to the raw Global Positioning System (GPS) data and inspection of ground images recorded by a vertically-mounted video camera. The survey was flown on a pre-determined flight surface to minimize differences in magnetic values at the intersections of control and traverse lines. These differences were computer-analysed to obtain a mutually levelled set of flight-line magnetic data. The levelled values were then interpolated to a 100 m grid. The International Geomagnetic Reference Field (IGRF) defined at the average GPS altitude of 410 m for the year 2017.213 was then removed. Removal of the IGRF representing the magnetic field of the Earth's core, produces a residual component related almost entirely to magnetizations within the Earth's crust.

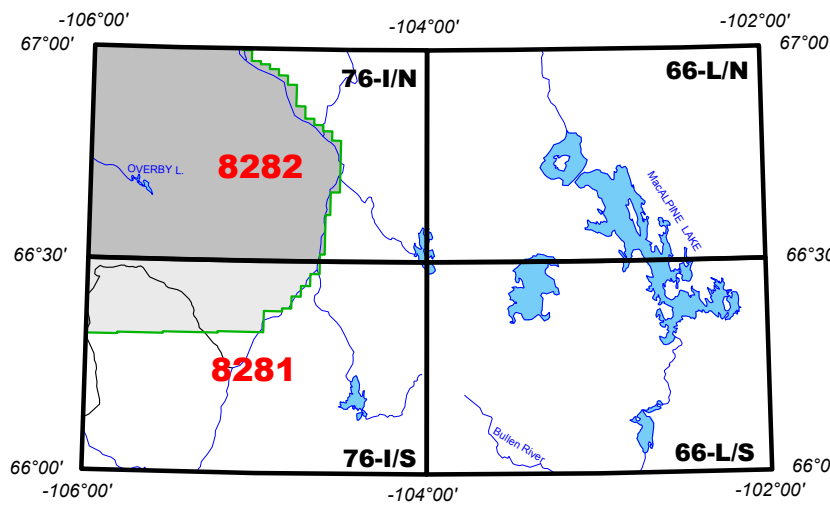
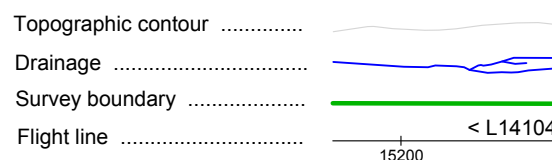
This publication is available for free download through GEOSCAN (<http://geoscan.nrcan.gc.ca/>). Corresponding digital profile and gridded data as well as similar data for adjacent airborne geophysical surveys are available from Natural Resources Canada's Geoscience Data Repository for Aeromagnetic data at http://gdr.gsa.nrcan.gc.ca/index_e.html. The same products are also available, for a fee, from the Geophysical Data Centre, Geological Survey of Canada, 601 Booth Street, Ottawa, Ontario K1A 0E8. Telephone: (613) 995-5326, email: info@geoscan.gc.ca.



ISOMAGNETIC LINES



PLANIMETRIC SYMBOLS



NATIONAL TOPOGRAPHIC SYSTEM REFERENCE AND GEOGRAPHICAL MAP INDEX

AEROMAGNETIC SURVEY OF THE OVERBY-DUGGAN AREA

OPEN FILE
DOSSIER PUBLIC

8282

GEOLOGICAL SURVEY OF CANADA
COMMISSION GÉOLOGIQUE DU CANADA

2017

Publications in this series
have not been edited:
they are released as
submitted by the author.

Les publications de
cette série ne sont
pas révisées; elles
sont publiées telles qu'a
soumises par l'auteur.

Recommended citation:

Coyle, M., 2017.
Residual total magnetic field.
Aeromagnetic Survey of the Overby-Duggan Area.
Part of NTS 76-I(North), Nunavut.
Geological Survey of Canada, Open File 8282,
scale 1:100 000. <https://doi.org/10.4095/904674>