

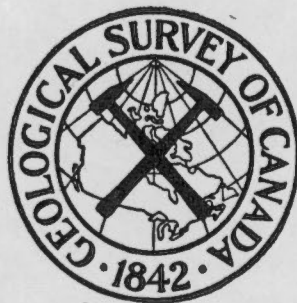
SER
557.1
C212-y

CANADA

DEPARTMENT OF MINES AND TECHNICAL SURVEYS

GEOLOGICAL SURVEY OF CANADA

Dept. Mines & Technical Surveys
MINES BRANCH
MAY 22 1959
LIBRARY
OTTAWA, CANADA



GEOLOGICAL REPORTS AND MAPS

OF

NORTHWEST TERRITORIES

1917 - 1958

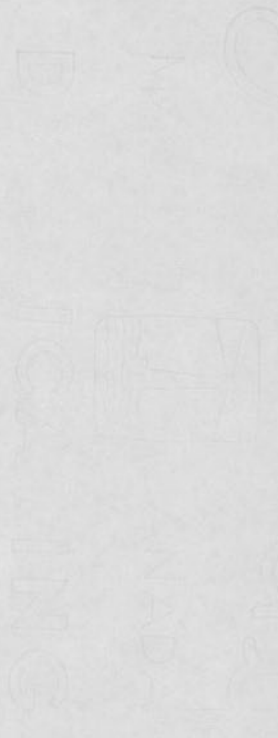
Misc. G. 56

Ottawa
1958

Revised 1/6/58

This document was produced
by scanning the original publication.

Ce document est le produit d'une
numérisation par balayage
de la publication originale.



Faint text centered below the seal, possibly a title or address.

GENERAL REPORTS

Economic Geology Series

- 1 Geology and Economic Minerals of Canada. (4th edition) by Officers of the Geological Survey. (\$2.00) (1957) contains Map 1045-A
- 4 Arsenic-bearing Deposits in Canada, by M.E. Hurst. (30 cents).
- *6 Fluorspar Deposits of Canada, by M.E. Wilson (20 cents).
- 7 Prospecting in Canada by A.H. Lang (3rd Ed.) \$2.00.
- 15 Canadian Lode Gold Areas, by H.C. Cooke. (25 cents).
- *16 Canadian Deposits of Uranium and Thorium, by A.H. Lang. (see paper 51-10).
- 17 Tungsten Deposits of Canada, by H. W. Little. (In Press).
- 18 Niobium (Columbium) Deposits of Canada, by Robert B. Rowe. (In Press).

Memoirs

- 24 Preliminary Report on the Clay and Shale Deposits of the Western Provinces, by Heinrich Ries and Joseph Keele. (50 cents).
- *25 Report on the Clay and Shale Deposits of the Western Provinces, Part II, by Heinrich Ries and Joseph Keele.
- *29 Oil and Gas Prospects of the Northwest Provinces of Canada, by W. Malcolm.
- 47 Clay and Shale Deposits of the Western Provinces, Part III, by Heinrich Ries. (25 cents).
- 53 Coal fields of Manitoba, Saskatchewan, Alberta, and Eastern British Columbia (revised edition), by D.B. Dowling. (50 cents).
- *57 Corundum; Its Occurrence, Distribution, Exploration and Uses, by A.E. Barlow (75 cents).
- *59 Coal Fields and Coal Resources of Canada, by D.B. Dowling.
- †65 Clay and Shale Deposits of the Western Provinces, Part IV, by H. Ries. (50 cents).
- 66 Clay and Shale Deposits of the Western Provinces, Part V, by J. Keele.
- *74 A List of Canadian Mineral Occurrences, by R.A.A. Johnston.
- 165 Studies of Geophysical Methods, 1928 and 1929, by L. Gilchrist, J.B. Mawdsley, A.S. Eve, D.A. Keys, H.C.I. Watson, J.H. Swartz, A.H. Miller C.A. French and M.E. Wilson. (45 cents).
- *170 Studies of Geophysical Methods, 1930, by A.S. Eve, D.A. Keys, L. Gilchrist and A.H. Miller (1932).
- 247 Physiography of the Canadian Cordillera, with special reference to the area north of the fifty-fifth parallel, by H.S. Bostock (1948) (25 cents).

* Out of Print

† Memoir 65 & 66 are bound together.

Special Contribution

- 47-1 A Century in the History of the Geological Survey of Canada, by F. J. Alcock, (25 cents).

Geological Survey Bulletins

- 1 A day in the Arctic, by J.D. Bateman. (10 cents).
2 The Magnetometer as an Aid in Geological Mapping, by J.W. Ambrose. (10 cents).
18 Contribution to the Palaeontology and Stratigraphy of the Jurassic System in Canada, by Hans Frebold. (25 cents).
24 The Coral Microcyclus and Some of its Devonian Species, by Clinton R. Stauffer. (25 cents).

Papers

- 47-26 Interim Catalogue of the Geological Survey Collections of Outstanding Air Photographs, by A.H. Lang, H.S. Bostock and Y.O. Fortier. (15 cents).
48-24 Studies of Some Canadian Topographic Maps (preliminary reports), by L.J. Weeks, E.D. Kindle, Y.O. Fortier, and Mary E.B. Hamilton. (15 cents).
51-10 Canadian Deposits of Uranium and Thorium by A.H. Lang (50 cents).
54-1 A List of Publications on Prospecting in Canada and Related Subjects (with Explanatory Notes), compiled by A.H. Lang. (25 cents).
56-5 A Bibliography on the occurrence of Uranium in Canada and related subjects compiled by J.W. Griffith. (25 cents).

Miscellaneous

- * G 3 An Experiment in Reconnaissance Mapping, by G. Shaw.
- * G 4 Grading Scheelite Deposits with an Ultra-violet Lamp by A.W. Jolliffe and R.E. Folinsbee.
- * G 7 An Outline of the Physical Geography of Canada, By D.B. Dowling.
- G10 Canada's Ground Water Resources from a Geological Aspect, by B.R. MacKay.
- G12 Canada Year Book 1946. The Coal Deposits and Coal Resources of Canada.
- G13 Coal Reserves of Canada.
- *G23 Natural Gas Reserves of Peace River Area, British Columbia and Alberta.
- G26 Introductory Mineral Table. (10 cents).
- G30 Prospecting for Uranium in Canada, by Officers of the Radioactivity Division. (50 cents).
- G31 Annotated List of Publications Related to Uranium.
- G40 Selected List of Illustrated Reports on Palaeontology, Geological Survey of Canada.
- G41 Recent Publications and Maps of the Geological Survey of Canada on the Geology of Oil and Gas in Western Canada.
- G43 List of Water Supply Papers
- G44 List of Elementary Textbooks in Geology and Mineralogy,
- G45 List of Published Geophysical Publications.
- G49 Publications of the Geological Survey of Canada (1917-1952). Price 50 cents. This publication also available in two parts at 25 cents each; one part for Geological Memoirs, Bulletins, etc., and the other for geological maps.
- G50 List of Recently Published General Reports and Maps of Canada.
- G51 List of Recently Published Memoirs, Preliminary Papers and Maps of the Yukon Territory.
- G52a List of Published Memoirs, Preliminary Papers and Maps of British Columbia, 1843-1917.
- G52 List of Published Memoirs, Preliminary Papers and Maps of British Columbia, 1917 to 1956.
- G53 List of Recently Published Memoirs, Preliminary Papers and Maps of Alberta.
- G54 List of Recently Published Memoirs, Preliminary Papers and Maps of Saskatchewan,

- G55 List of Recently Published Memoirs, Preliminary Papers and Maps of Manitoba.
- G56 List of Recently Published Memoirs, Preliminary Papers and Maps of Northwest Territories.
- G57. List of Published Memoirs, Preliminary Papers and Maps of Ontario, 1843-1917.
- G57 List of Published Memoirs, Preliminary Papers and Maps of Ontario, 1917 to 1956.
- G58 List of Recently Published Memoirs, Preliminary Papers and Maps of Quebec.
- G59 List of Recently Published Memoirs, Preliminary Papers and Maps of the Maritime Provinces.

NORTHWEST TERRITORIES

Memoirs

- 30 The Basins of Nelson and Churchill Rivers, by William LeInnes, Contains Map 58A (50 cents).
- 84 An exploration of the Tazin and Talston Rivers, Northwest Territories, by Charles Camsell, contains Map 186A. (25 cents).
- *108 Mackenzie River Basin (Second edition) by Charles Camsell and Wyatt Malcolm, contains Map 1585.
- *187 Rae to Great Bear Lake, Mackenzie District, Northwest Territories, by D.F. Kidd, contains Map 331A to 333A.
- *230 Mineral Industry of the Northwest Territories, by C.S. Lord.
- 235 Snare River and Ingray Lake Mapareas, Northwest Territories, by C.S. Lord contains Maps 690A and 697A. (25 cents).
- 261 Mineral Industry of the District of Mackenzie, Northwest Territories, by C.S. Lord. (\$1.25).
- 266 Giauque Lake, Northwest Territories, by L.P. Tremblay, contains Map 1017A (75 cents).
- 273 Lower Mackenzie River Area, by G.S. Hume, contains Maps , 1032A, 1033A, 1034A. (\$1.00).
- 283 Courageous - Mathews Lake area by J. J. G. Moore contains maps 1024A and 1025A (75 cents).
- 294 Cornwallis and Little Cornwallis Island by : Thorsteinson (In Press).

SUMMARY REPORTS

- ★ S1916 Reconnaissance on Great Slave Lake, N.W.T., by A.E. Cameron.
- ★ S17C Explorations in the Vicinity of Great Slave Lake, by A.E. Cameron.
- ★ S19C Notes on the Iron Ores of Mackenzie River Valley, by E.M. Kindle.
- ★ S20B Great Slave Lake Area, N.W.T., by G.S. Hume, Oil-bearing Rocks of Lower Mackenzie River Valley, N.W.T., by E.M. Kindle and T.O. Bosworth.
- S21B Hay and Buffalo Rivers, Great Slave Lake and Adjacent Country, N.W.T., by A.E. Cameron Mackenzie River District Between Great Slave Lake and Simpson, N.W.T., by E.J. Whittaker. Exploration East of Mackenzie River, Between Simpson and Wrigley, N.W.T., by M.Y. Williams. North Nahanni and Root Rivers Area, and Caribou Island, Mackenzie River District, by G. S. Hume. Geological Structure of the Mackenzie River Region, by D.B. Dowling. (25 cents).
- S21E Iron-bearing Rocks of Belcher Island, Hudson Bay, N.W.T., by G.A. Young. (25 cents).
- ★S22B Reconnaissance Across Northeastern British Columbia and the Geology of the Northern Extension of Franklin Mountains, N.W.T., by M.Y. Williams.
- Geology of the Norman Oil Fields and a Reconnaissance of a Part of Liard River, by G.S. Hume. Mackenzie River District Between Providence and Simpson, N.W.T., by E.J. Whittaker.
- ★S23B Mackenzie River Area, District of Mackenzie, N.W.T., by G.S. Hume.
- ★S24B Deep Borings in the Prairie Provinces and N.W.T., by E.D. Ingall.
- ★S25B Deep Borings in the Prairie Provinces and N.W.T., by E.D. Ingall.
- ★S25C The Geology of Parts of Eastern Arctic Canada, by L.J. Weeks.
- ★S26B Deep Borings in the Prairie Provinces and N.W.T., by E.D. Ingall.
- ★S27B Deep Borings in the Prairie Provinces and N.W.T., by E.D. Ingall.
- ★S27C Cumberland Sound Area, Baffin Island, N.W.T., by L.J. Weeks. (25 cents).
- S29B Mistake Bay Area, West Coast of Hudson Bay, Northwest Territories, by L.J. Weeks. (50 cents).
- ★S31C Rankin Inlet Area, West Coast of Hudson Bay, N.W.T., by L.J. Weeks. Great Bear Lake-Coppermine River Area, Mackenzie District, N.W.T., by D.F. Kidd. Metalliferous Mineral Possibilities of the Mainland Part of the Northwest Territories, by C.H. Stockwell and D.F. Kidd.
- ★S32C Great Bear Lake Area, N.W.T., by D.F. Kidd. Great Slave Lake-Coppermine River Area, N.W.T., by C.H. Stockwell. Maguse River and Part of Ferguson River Basin, N.W.T., by L.J. Weeks.

GEOLOGICAL SURVEY BULLETINS

- GSB.30 A Decrepitation Study of Quartz from the Campbell and Negus-Rycon Sheer Zone Systems, Yellowknife, by R.W. Boyle. (50 cents).
- GSB.34 Regional Zonation of Pegmatites near Ross Lake, by R.W. Hutchison. (75 cents).
- GSB.38 Ordovician cephalopods from Cornwallis and Little Cornwallis Islands, District of Franklin, Northwest Territories, by Walter C. Sweet and A.K. Miller. (\$1.50).
- GSB.40 A Carboniferous Spore Assemblage, in Coal from the South Nahanni River Area, N.W.T., by P.A. Hacquebard and M.S. Barss. Price \$1.25.
- GSB.41 Fauna, Age and Correlation of the Jurassic Rocks of Prince Patrick Island by Hans Frebold. Price \$1.50.
- GSB - Surficial Geology of Southern District of Keewatin and the Keewatin Ice Divide, by Hubert A. Lee. (In Press).

NORTHWEST TERRITORIES

Papers

- ★ 36-5 Preliminary report, Yellowknife River Area, by A.W. Jolliffe.
- ★ 36-16 Preliminary geological map, Great Slave Lake, East Arm (east and west sheets)
By C. H. Stockwell
- ★ 37-2 Replaced by Map 526A.
- ★ 38-1 Replaced by Map 581A.
- 38-21 Preliminary report, Yellowknife Bay-Prosperous Lake Area, by A.W. Jolliffe.
(15 cents).
- ★ 39-1 Replaced by Map 581A.
- ★ 39-5 Replaced by Memoir 235.
- 39-6 Preliminary maps, Quya Lake and Parts of Fishing Lake and Prosperous Lake Areas,
by A.W. Jolliffe. (15 cents).
- ★ 39-11 Replaced by Map 607A.
- ★ 40-7 Replaced by Map 645A.
- ★ 40-9 Replaced by Map 644A.
- 40-14 Quya Lake and Parts of Fishing Lake and Prosperous Lakes areas, by A.W.
Jolliffe. (15 cents).
- ★ 41-1 Replaced by Map 738A.
- 41-2 Preliminary map, Great Slave Lake to Great Bear Lake, (15 cents).
- ★ 41-3 Replaced by Memoir 235.
- 44-12 Rare Element Minerals in Pegmatites, Yellowknife-Beaulieu Area, by A.W.
Jolliffe. (15 cents).
- ★ 45-4 Replaced by Map 868A.
- ★ 45-16 Replaced by Memoir 273
- ★ 45-22 Geological Reconnaissance along the Lower Liard River, Northwest Territories,
Yukon and British Columbia (report and map), by C.O. Hage.
- ★ 45-29 Refer to Memoir 273

★ Out of Print

★ Superseded

Papers (cont'd)

- 46-23 Preliminary map, Yellowknife-Beaulieu Region, by Y.O. Fortier, (15 cents).
- 47-2 Exploration for Petroleum, 1946, (Report and Figure), by J.S. Stewart. (15 cents)
- *47-4 Replaced by Map 1014A.
- *47-5 Replaced by Map 977A.
- 47-16 Preliminary map, Ross Lake (Map and Descriptive Notes) by Y.O. Fortier. (15 cents).
- *47-18 Replaced by Map 1023A.
- *48-10 Ranji Lake Map-area (Report and Map), by L.P. Tremblay.
- *48-17 Preliminary map, Yellowknife (two sheets and descriptive notes), by J.F. Henderson and I.C. Brown.
- *48-19 Replaced by Map 1014A.
- 48-20 Replaced by map 1023A.
- 48-23 Flights in 1947 over the Region of the North Magnetic Pole and the Mainland between the Arctic Coast, Great Slave Lake, and Hudson Bay, N.W.T., (Report and Map), by Y.O. Fortier. (15 cents).
- *49-2 Replaced by Map 1031A.
- *49-8 Replaced by Paper 51-8.
- 49-10 Indin Lake Map-area (east half) (Report and Map), by Y.O. Fortier. (15 cents).
- 49-14 Preliminary map, Wecho River (east half), by D.H. Yardley. (15 cents).
- 49-16 Pitchblende Occurrences between Beaverlodge and Hottah Lakes, (Report and Two Maps), by J.F. Henderson. (15 cents).
- *49-19 Replaced by Map 1011A
- 49-26 Preliminary map, Yellowknife, (sheet 3), by J.F. Henderson and I.C. Brown. (15 cents).
- *50-2 Replaced by map 1024A.

Papers (cont'd)

- ★ 50-4 Replaced by Map 1013A.
- ★ 50-10 Replaced by Map 1031A.
- ★ 50-13 Replaced by Map 1021A.
- ★ 50-15 Replaced by Paper 51-26.
- ★ 50-18 Replaced by Memoir 266.
- ★ 50-21 Replaced by Paper 51-25.
- 50-28 Preliminary map, Fort Resolution (Map and Descriptive Notes) compiled by I.C. Brown. (15 cents).
- 50-34 Preliminary map, Yellowknife (Sheet 4) by J.F. Henderson and I.C. Brown. (15 cents).
- 51-6 Snowdrift map-area (Report and Map) by F.Q. Barnes (15 cents).
- 51-8 Carp Lakes, by J.C.G. Moore, M.L. Miller and F.Q. Barnes. (15 cents).
- ★ 51-14 Replaced by Map 1025 A.
- ★ 51-18 Replaced by Memoir 266.
- 51-25 Christie Bay, by G. M. Wright. (15 cents).
- 51-26 Reliance (2nd. edition) by G.M. Wright. (15 cents).
- 52-5 McLean Bay Map-area, District of Mackenzie, by F.Q. Barnes, (15 cents).
- 52-8 Pegmatitic Mineral Deposits of the Yellowknife-Beaulieu Region, District of Mackenzie, by Robert B. Rowe. (15 cents).
- 52-24 Yellowknife (Sheet 5) by J. F. Henderson and I.C. Brown (15 cents).
- 52-25 Geological Notes on localities in James Bay, Hudson Bay and Foxe Basin visited during an Exploration Cruise, 1949, by C.A. Burns. (15 cents).
- 52-28 Yellowknife Greenstone, by J.F. Henderson and I.C. Brown. (15 cents).
- 52-32 Notes on the Geology of parts of Ellesmere and Devon Islands, (Report and Map) by V.K. Prest. (1953) (15 cents).

★ Superseded

Papers (cont'd)

- 53-10 Geological Reconnaissance North Coast of Ellesmere Island, Arctic Archipelago, by R.G. Blackadar. (50 cents).
- 53-22 Geological Notes on Southern District of Keewatin, by C.S. Lord. (35 cents).
- 53-24 Geology of Cornwallis Island, Arctic Archipelago, by R. Thorsteinson and Y.O. Fortier (Report and Map). (50 cents).
- 55-5 Prince Patrick, Eglington, and Western Melville Islands, by E.T. Tozor. (50 cents).
- 55-6 Admiralty Inlet, Baffin Island, by R.G. Blackadar. (50 cents).
- 55-9 O'Connor Lake, by A.B. Irwin. (25 cents).
- 55-10 Abitau, Lake by J.W. Hoadley. (25 cents).
- 55-16 Hill Island Lake (E.1/2), by F.C. Taylor. (25 cents).
- 55-17 Central District Keewatin, by G.M. Wright. (50 cents).
- 55-25 Hill Island Lake (W.1/2), by R. Mulligan. (25 cents).
- 56-4 Tumi Lake by J.C. McGlynn, contains map 9-1956 (50 cents).
- 56-6 Geological reconnaissance in the Northern Mountains, Yukon and Northwest Territories, (with map 12-1956 by H. Gabrielse (50 cents).
- 56-3 Ellef Ringnes Island, District of Franklin, Isachsen by W.W. Heywood, with map 15-1956 (50 cents).
- 56-9 Geological Reconnaissance of the North Coast of Ellesmere Island, District of Franklin, with map 16-1956 by R.L. Christie (50 cents).
- 56-10 Geological notes on Eastern District of Mackenzie by G.M. Wright, (with Map 17-1956 (50 cents).
- 58-2 Uppermost Jurassic and Cretaceous Rocks of Aklavik Range, Northeastern Richardson Mountains by J.A. Jaletsky (In Press).

GEOPHYSICS PAPERS

- 39 Yellowknife Bay, District of Mackenzie, Lat. 62-15 to 62-30; long. 114-00 to 114-30; Sheet 85 J/8.
- 40 Prosperous Lake, District of Mackenzie, Lat. 62-30 to 62-45; Long. 114-00 to 114-30; Sheet 85 J/9.
- 41 Quyta Lake, District of Mackenzie, lat. 62-45 to 63-00; Long. 114-00 to 114-30; Sheet 85 J/16.
- 49 Preble Island, District of Mackenzie, Lat. 61-30 to 61-45; Long. 112-00 to 112-30; Sheet 85 H/9.
- 50 Petitot Island, District of Mackenzie, lat. 61-30 to 61-45; Long. 112-30 to 113-00; Sheet 85 H/10.
- 51 Wilson Island, District of Mackenzie, lat. 61-45 to 62-00; long. 112-30 to 113-00; Sheet 85 H/15.
- 52 Hornby Channel, District of Mackenzie, lat. 61-45 to 62-00; long. 112-00 to 112-30; Sheet 85 H/16.
- 53 McConnell Island, District of Mackenzie, lat. 61-00 to 61-15; long. 113-00 to 113-30; Sheet 85 H/3.
- 54 Fort Resolution, District of Mackenzie, lat. 61-00 to 61-15; long. 113-30 to 114-00; Sheet 85 H/4.
- 55 Slave Delta, District of Mackenzie, lat. 61-15 to 61-30; long. 113-30 to 114-00; Sheet 85 H/5.
- 56 Jean River, District of Mackenzie, lat. 61-15 to 61-30; long. 113-00 to 113-30; Sheet 85 H/6.
- 60 Rat River, District of Mackenzie, lat. 61-00 to 61-15; long. 112-30 to 113-00; Sheet 85 H/2.
- 61 Taltson Bay, District of Mackenzie, lat. 61-15 to 61-30; long. 112-30 to 113-00; Sheet 85 H/7.
- 62 Thubun Lakes, District of Mackenzie, lat. 61-15 to 61-30; long. 112-00 to 112-30; Sheet 85 H/8.
- 63 Deskenatlata North, District of Mackenzie, lat. 61-00 to 61-15; long. 112-00 to 112-30; Sheet 85 H/1.
- 74 Bear Creek, District of Mackenzie, lat. 60-30 to 60-45; long. 113-00 to 113-30; Sheet 85 A/11.
- 75 Salt Lake, District of Mackenzie, lat. 60-45 to 61-00; long. 113-30 to 114-00; Sheet 85 A/13
- 76 Buffalo River, District of Mackenzie, lat. 60-30 to 60-45; long. 114-30 to 115-00; Sheet 85 B/10.

Geophysics Papers.

- 77 Sandy River, District of Mackenzie, lat. 60-30 to 60-45; long. 115-30 to 116-00; Sheet 85 J/8.
- 78 Hay River, District of Mackenzie, lat. 60-45 to 61-00; long. 115-30 to 116-00; Sheet 85 J/9.
- 79 Mackenzie Rocks, District of Mackenzie, lat. 60-45 to 61-00; long. 115-00 to 115-30; Sheet 85 E/14.
- 80 Breynat Point, District of Mackenzie, lat. 60-45 to 61-00; long. 114-30 to 115-00; Sheet 85 B/15.
- 81 Ile du Mort, District of Mackenzie, lat. 60-45 to 61-00; long. 114-00 to 114-30; Sheet 85 B/15.
- 82 Nyarling, District of Mackenzie, lat. 60-30 to 60-45; long. 113-30 to 114-00; Sheet 85 A/12.
- 83 Sulphur Springs, District of Mackenzie, lat. 60-30 to 60-45; long. 115-00 to 115-30; Sheet 85 B/11.
- 84 Swampy Lake, District of Mackenzie lat. 60-30 to 60-45; long. 114-00 to 114-30; Sheet 85 B/9.
- 87 Long. Island, District of Mackenzie, lat. 60-45 to 61-00; long. 113-00 to 113-30; Sheet 85 A/14.
- 105 Pointe Ennuyeuse, District of Mackenzie, lat. 60-45 to 61-00; long. 112-30 to 113-00; Sheet. 85 A/15.
- 106 Landry Creek, District of Mackenzie lat. 60-30 to 60-45 long. 112-00 to 112-30; Sheet 85 A/10.
- 107 Deskenatlata Lake South, District of Mackenzie, lat. 60-45 to 61-00; long. 112-00 to 112-30; Sheet 85 A/16.
- 108 Brule Point, District of Mackenzie, Lat. 60-30 to 60-45; long. 112-00 to 112-30; Sheet 85 A/9.
- 216 Magnetic Anomaly East of Atzinging Lake, District of Mackenzie, lat. 60-15 to 60-20; long. 102-50 to 103-00; Sheet 65 D/7.
- 252 Klokol Lake, District of Mackenzie, lat. 60-00 to 60-15; long. 102-30 to 103-00; Sheet 65 D/2
- 253 Barr Lake, District of Mackenzie, lat. 60-15 to 60-30; long. 102-30 to 103-00; Sheet 65 D/7.
- 254 Latimer Lake, District of Mackenzie, Lat. 60-30 to 60-45; long. 102-30 to 103-00; Sheet 65 D/10.
- 255 White Partridge Island, District of Mackenzie, Northwest Territories, (Advance Edition). Lat. 60-00 to 60-15; Long. 102-00 to 102-30; Sheet 65 D/1.

Geophysics Papers

- 256 Gothe Island, District of Mackenzie, (Advance Edition). Lat. 60-15 to 60-30; long. 102-00 to 102-30; Sheet 65 D/8.
- 257 Simons Island, District of Mackenzie, (Advance Edition) Lat. 60-30 to 60-45; long. 102-00 to 102-30; Sheet 65 D/9.
- 258 Kokoot Lake, District of Mackenzie, (Advance Edition) Lat. 60-45 to 61-00; long. 102-30 to 103-00; Sheet 65 D/15.
- 259 Linklater Lake, District of Mackenzie, (Advance Edition) Lat. 60-45 to 61-00; long. 102-00 to 102-30; Sheet 65 D/10.
- 260 Mallet Lake, District of Mackenzie, (Advance Edition) Lat. 61-00 to 61-15; long. 102-00 to 102-30; Sheet 65 E/1.
- 261 Three Wives Lake, District of Mackenzie, (Advance Edition) Lat. 61-00 to 61-15; long. 102-30 to 103-00; Sheet 65 E/2.
- 262 Casimir Island, District of Mackenzie, (Advance Edition), Lat. 61-15 to 61-30; long. 102-30 to 103-00; Sheet 65 E/7.
- 263 Taitna Lake, District of Mackenzie, (Advance Edition), Lat. 61-15 to 61-30; long. to 102-00 to 102-30; Sheet 65 E/8.
- 264 Blue Island, District of Mackenzie, (Advance Edition) Lat. 61-30 to 61-45; long. 102-00 to 102-30; Sheet 65 E/9.
- 265 Kakarmik Lake, District of Mackenzie, (Advance Edition). Lat. 61-30 to 61-45; long. 102-30 to 103-00; Sheet 65 E/10.
- 266 Enekatcha Lake, District of Mackenzie, (Advance Edition). lat. 61-45 to 62-00; long. 102-30 to 103-00; Sheet 65 E/15.
- 267 Blue Lake, District of Mackenzie, (Advance Edition) lat 61-45 to 62-00; long. 102-00 to 102-30; Sheet 65 E/16.
- 359 Deering Island, District of Mackenzie (Advance Edition) Lat. 60-00 to 60-15; long. 103-00 to 103-30; Sheet 65 D/3.
- 360 Striding River, District of Mackenzie, (Advance Edition) lat. 60-00 to 61-15; long. 103-30 to 104-00; Sheet 65 D/4.
- 361 Meyrick Lake, District of Mackenzie (Advance Edition) lat. 60-15 to 60-30; long. 103-30 to 104-00; Sheet 65 D/5.
- 362 Dehoux Bay, District of Mackenzie, lat. 60-15 to 60-30; long. 103-00 to 103-30; Sheet 65 D/6.
- 363 Suggitt Lake, District of Mackenzie, (Advance Edition) lat. 60-30 to 60-45; long. 103-00 to 103-30; Sheet 65 D/11.
- 364 Lone Lake, District of Mackenzie (Advance Edition). Lat. 60-30 to 60-45; long. 103-30 to 104-00; Sheet 65 D/12.

Geophysics Papers

- 365 Allen Lake , District of Mackenzie, lat. 60-45 to 61-00; long. 103-30 to 104-00; Sheet 65 D/13.
- 366 Sherwood Lake, District of Mackenzie (Advance Edition) lat. 60-45 to 61-00; long. 103-00 to 103-30; Sheet 65 D/14.
- 367 Ridgers Lake, Lat. District of Mackenzie, lat. 61-00 to 61-15; long. 103-00 to 103-30; Sheet 65 E/3.
- 368 Hinde Lake, District of Mackenzie, lat. 61-00 to 61-15; long. 103-30 to 104-00; Sheet 65 E/4
- 369 Dolby Lake, District of Mackenzie, Lat. 61-15 to 61-30; long. 103-30 to 104-00 Sheet 65 E/5.
- 370 Arnot Lake, District of Mackenzie, lat. 61-15 to 61-30; long. 103-00 to 103-30; Sheet 65 E/6.
- 371 Nicol Lake, District of Mackenzie, lat. 61-30 to 61-45; long. 103-00 to 103-30; Sheet 65 E/11.
- 372 Nixon Lake, District of Mackenzie, lat. 61-30 to 61-45 long. 103-30 to 104-00; Sheet 65 E/12.
- 373 Edwards Lake, District of Mackenzie, lat. 61-45 to 62-00; long. 103-30 to 104-00; Sheet 65 E/13.
- 374 Crawford Lake, District of Mackenzie, lat. 61-45 to 62-00; long. 103-00 to 103-30; Sheet 65 E/14.
- 375 Bouskill Lake, District of Mackenzie, lat. 60-00 to 60-15; long. 104-00 to 104-30; Sheet 75 A/1.
- 376 Turner Lake, District of Mackenzie, lat. 60-00 to 60-15; long. 104-30 to 105-00; Sheet 75 A/2.
- 377 Thomas Lake, District of Mackenzie, lat. 60-00 to 60-15; long. 105-00 to 105-30; Sheet 75 A/3.
- 378 Wignes Lake, District of Mackenzie, lat. 60-00 to 60-15; long. 105-30 to 106-00; Sheet 75 A/4.
- 379 Burslem Lake, District of Mackenzie, lat. 60-15 to 60-30; long. 105-30 to 106-00; Sheet 75 A/5.
- 380 Eaton Lake, District of Mackenzie, lat. 60-15 to 60-30; long. 105-00 to 105-30; Sheet 75 A/6.
- 381 Bertran Lake, District of Mackenzie, lat. 60-15 to 60-30; long. 104-30 to 105-00; Sheet 75 A/7.
- 382 Flett Lake, District of Mackenzie, lat. 60-15 to 60-40; long. 104-00 to 104-30; Sheet 75 A/8.

Geophysic Papers

- 383 Innes Island, District of Mackenzie, lat. 60-30 to 60-45; long. 104-00 to 104-30; Sheet 75 A/9.
- 384 Wright Lake, District of Mackenzie, lat. 60-30 to 60-45; long. 104-30 to 105-00; Sheet 75 A/10.
- 385 Southby Lake, District of Mackenzie, lat. 60-30 to 60-45; long. 105-00 to 105-30; Sheet 75 A/11.
- 386 Rutledge Lake, District of Mackenzie, lat. 60-30 to 60-45; long. 105-30 to 106-00; Sheet 75 A/12.
- 387 Atkinson Lake, District of Mackenzie, lat. 60-45 to 61-00; long. 105-30 to 106-00; Sheet 75 A/13.
- 388 Mountain Lake, District of Mackenzie, Lat. 60-45 to 61-00; long. 105-00 to 105-30; Sheet 75 A/14.
- 389 Cochrane Lake, District of Mackenzie, lat. 60-45 to 61-00; long. 104-30 to 105-00; Sheet 75 A/15.
- 390 Anaethad Lake, District of Mackenzie, lat. 60-45 to 61-00; long. 104-00 to 104-30; Sheet 75 A/16.
- 391 Millar Lake, District of Mackenzie, lat. 61-00 to 61-45; long. 104-00 to 104-30; Sheet 75 H/1.
- 392 Veira Lake, District of Mackenzie, lat. 61-00 to 61-15; long. 104-30 to 105-00; Sheet 75 H/2.
- 393 Andrecyk Lake, District of Mackenzie, lat. 61-00 to 61-15; long. 105-00 to 105-30; Sheet 75 H/3.
- 394 Gozdz, District of Mackenzie Lat. 61-00 to 61-15; Long. 105-30 to 106-00; Sheet 75 H/4.
- 395 Vermette Lake, District of Mackenzie, lat. 61-15 to 61-30; long. 105-30 to 106-00; Sheet 75 H/5.
- 400 Jarvis Lake, District of Mackenzie, lat. 61-30 to 61-45; long. 104-30 to 105-00; Sheet 75 H/10.
- 401 Knowles Lake, District of Mackenzie, lat. 61-30 to 61-45; long. 105-00 to 105-30; Sheet 75 H/11.
- 402 Stephenson Lake, District of Mackenzie, lat. 61-30 to 61-45; long. 105-30 to 106-00; Sheet 75 H/12.
- 403 Rauta Lake, District of Mackenzie, lat. 61-45 to 62-00; long. 105-30 to 106-00; Sheet 75 H/13.
- 404 Sammon Lake, District of Mackenzie, lat. 61-45 to 62-00; long. 105-00 to 105-30; Sheet 75 H/14.

- 405 Sinclair Lake, District of Mackenzie, Lat. 61-45 to 62-00; long. 104-30 to 105-00; Sheet 75 H/15.
- 406 Foster Lake, District of Mackenzie, Lat. 61-45 to 62-00; long. 104-00 to 104-30; Sheet 75 H/16.
- 620 Croft Lake, District of Mackenzie, lat. 62-00 to 62-15; long. 104-30 to 104-00; Sheet 75 I/1.
- 621 Scheelar Lake, District of Mackenzie, lat. 62-00 to 62-15; long. 105-00 to 104-30; Sheet 75 I/2.
- 622 Jim Lake, District of Mackenzie, lat. 62-15 to 62-30; long. 105-00 to 104-30; Sheet 75 I/7
- 623 Shoemaker Lake, District, lat. 62-15 to 62-30; long 104-30 to 104-00; Sheet 75 I/8.
- 624 Mossip Bay, District of Mackenzie, lat. 62-30 to 62-45; long. 104-30 to 104-00; Sheet 75 I/9.
- 625 High Island, District of Mackenzie, lat. 62-30 to 62-45; long. 105-00 to 104-30; Sheet 75 I/10.
- 626 Beack Lake, District of Mackenzie, lat. 62-45 to 63-00; long. 104-30 to 105-00; Sheet 75 I/15.
- 627 Beaver hill Lake, District of Mackenzie, lat. 62-45 to 63-00; long. 104-00 to 104-30; Sheet 75 I/16.
- 672 Biblowitz Lake, District of Mackenzie, lat. 62-00 to 62-15; long. 105-00 to 105-30; Sheet 75 I/3.
- 673 Nieznany Lake, District of Mackenzie, lat. 62-15 to 62-30; long. 105-00 to 105-30; Sheet 75 I/6.
674. Breithaupt Lake, District of Mackenzie; lat. 62-30 to 62-45; long. 105-00 to 105-30; Sheet 75 I/11.
- 675 Olson Lake, District of Mackenzie, lat. 62-45 to 63-00; long. 105-00 to 105-30; Sheet 75 I/14.
- 676 Logie Lake, District of Mackenzie, lat. 62-00 to 62-15; long. 105-30 to 106-00; Sheet 75 I/4.
- 677 Snelgrove Lake, District of Mackenzie, lat. 62-15 to 62-30; long. 105-30 to 106-00; Sheet 75 I/5.
- 678 Noyes Lake, District of Mackenzie, lat. 62-30 to 62-45; long. 105-30 to 106-00; Sheet 75 I/12.
- 679 Bodie Lake, District of Mackenzie, lat. 62-45 to 63-00; long. 105-30 to 106-00; Sheet 75 I/13.
- 680 Tite Lake, District of Mackenzie, lat. 60-30 to 60-45; long. 107-00 to 107-30; Sheet 75 B/11.

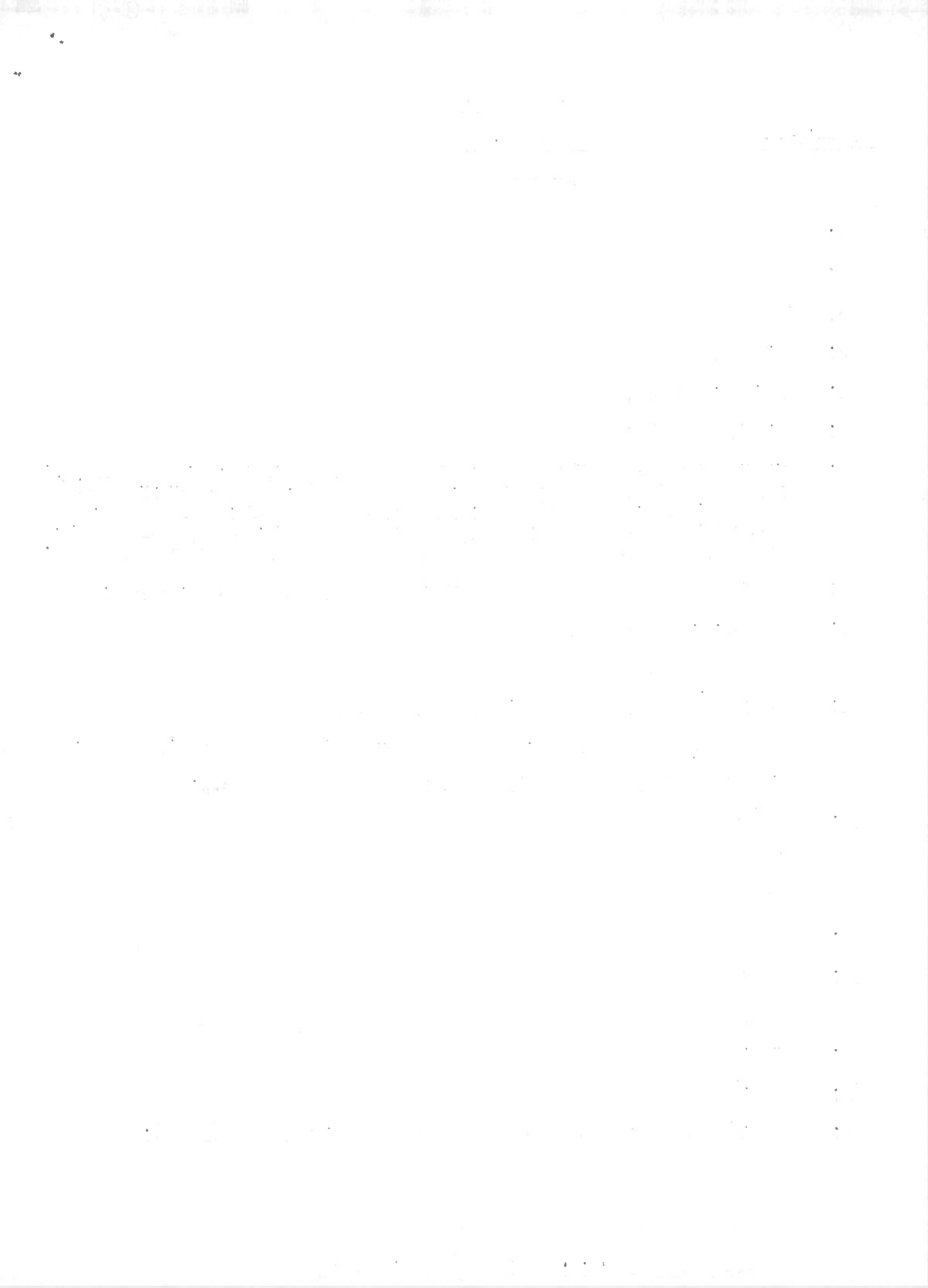
- 681 Geeves Lake, District of Mackenzie, lat. 60-45 to 61-00; long. 107-00 to 107-30; Sheet 75 B/14.
- 682 Dunvegan Lake, District of Mackenzie, lat. 60-00 to 60-15; long. 107-00 to 107-30; Sheet 75 B/3.
- 683 Abitau Lake, District of Mackenzie, lat. 60-15 to 60-30; long. 107-00 to 107-30; Sheet 75 B/6.
- 684 Mansfield Lake, District of Mackenzie, lat. 61-00 to 61-15; long. 107-00 to 107-30; Sheet 75 G/3.
- 685 Cronyn Lake, District of Mackenzie, lat. 61-15 to 61-30; long. 107-00 to 107-30; Sheet 75 G/6.
- 686 Miller Lake, District of Mackenzie, lat. 61-30 to 61-45; long. 107-00 to 107-30; Sheet 75 G/11.
- 687 Lamarre Lake, District of Mackenzie, lat. 61-45 to 62-00; long. 107-00 to 107-30; Sheet 75 G/14.
- 688 Sled Creek, District of Mackenzie, lat. 62-00 to 62-15; long. 107-00 to 107-30; Sheet 75 J/3.
- 689 Huff Lake, District of Mackenzie, lat. 62-15 to 62-30; long. 107-00 to 107-30; Sheet 75 J/6.
- 690 Catholic Lake, District of Mackenzie, lat. 62-30 to 62-45; long. 107-00 to 107-30; Sheet 75 J/11.
- 691 Lake, of Woe, District of Mackenzie, lat. 62-45 to 63-00; long. 107-00; to 107-30; Sheet 75 J/14.
- 692 Knobovitch Lake, District of Mackenzie, lat. 61-00 to 61-15; long. 106-30 to 107-00; Sheet 75 G/2.
- 693 Burpee Lake, District of Mackenzie, lat. 61-15 to 61-30; long. 106-30 to 107-00; Sheet 75 G/7.
- 694 McArthur Lake, District of Mackenzie, lat. 61-30 to 61-45; long. 106-30 to 107-00; Sheet 75 G/10.
- 695 Brooks Lake, District of Mackenzie, lat. 61-45 to 62-00; long. 106-30 to 107-00; Sheet 75 G/15.
- 696 Sled Lake, District of Mackenzie, lat. 62-00 to 62-15; long. 106-30 to 107-00; Sheet 75 J/2.
- 697 Timberhill, District of Mackenzie, lat. 62-15 to 62-30; long. 106-30 to 107-00; Sheet 75 J/7.
- 698 La Roque Bay District of Mackenzie, lat. 62-30 to 62-45; long. 106-30 to 107-00; Sheet 75 J/10.

Geophysics Papers Cont'd

- 699 Wick Lake, N.W.T. District of Mackenzie, Lat. 62-45 to 63-00; long. 106-30 to 107-00; Sheet 75 J/15.
- 700 Glass Lake, District of Mackenzie, Lat. 60-00 to 60-15; long. 106-30 to 107-00; Sheet 75 B/2.
- 701 Charlton Lake, District of Mackenzie, Lat. 60-15 to 60-30; long. 106-30 to 107-00; Sheet 75 B/7.
- 702 Insula Lake, District of Mackenzie, Lat. 60-30 to 60-45; long. 106-30 to 107-00; Sheet 75 B/10.
- 703 Sylvan Lake, District of Mackenzie, Lat. 60-45 to 61-00; long. 106-30 to 107-00; Sheet 75 B/15.
- 704 Donnelly Lake, District of Mackenzie, (In Press).
- 705 Penylan Lake, District of Mackenzie, (In Press).
- 706 Coventry Lake, District of Mackenzie, (In Press).
- 707 Dymond Lake, District of Mackenzie, ((In Press.))

PRELIMINARY MAPS

- Map 7-1956 - Snowbird Lake, District of Mackenzie scale 1 inch to 4 miles (Sheet 65 D) Price 25 cents.
- 9-1956 (See Paper 56-4)
- 12-1956 See Paper 56-6
- 15-1956 See Paper 56-8
- 16-1956 See Paper 56-9
- 2-1958 Hardisty Lake (In Press)..
- 3-1958 Fury and Hecla Strait (In Press).
- 4-1958 Foxe Basin, North, (In Press).
- 16-1958 Fort Enterprise (In Press).



FINDING LIST

Subdivision

Regional Maps

Map Numbers

- 1.
- 2.
- 3.
4. P-53-22, P-55-17,
5. P-53-22, P-55-17,
6. P-53-22, P-55-10, P-56-10,
7. P-36-5, P-38-21, P-39-6, P-40-14, P-41-2, P-44-12, P-46-23, P-47-16, P-48-17, P-49-14, P-49-26, P-50-28, P-50-34, P-51-8, P-51-25, P-51-2C, P-52-5, P-51-6, P-52-8, P-52-24, P-52-28, P-55-9, P-55-16, P-55-25, 186-A, 331-A, 377-A, 378-A, 525-A, 526-A, 581-A, 607-A, 644-A, 645-A, 690-A, 709-A, 738-A, 868-A, 1013-A, 1021-A, 1022-A, 1024-A, 1017-A, GSB-34 (Figure 1,) GSB 30 (Figure 2).
8. P-36-5, P-41-2, P-45-22, P-56-4, 1956, 1957, 2022, 331-A, 690-A, 1032-A.
9. P-45-22, 2022, 1032-A.
10. P-56-6, 1034-A.
11. 1872, 1873, 1977, 2022, 1032-A, 1033-A, 1034-A.
12. P-41-2, P-49-16, 2022, 296-A, 332-A, 333-A, 697-A, 1011-A, 1014-A, 1032-A.
13. P-41-2, P-49-10, 697-A, 977-A, 1023-A, 1024-A, 1025-A, 1031-A.
14. P-56-10
15. P-55-17.
16. P-55-17
- 17.
18. 219-A
19. 219-A
20. P-53-24
21. P-56-6
22. P-52-32, P-53-10, P-53-24, P-55-5, P-56-8, P-56-9, GSB 38 Figure 2.

General

P-47-2, P-48-23, P-52-25, 1585, 1963



GENERAL MAPS OF CANADA

Dominion

- x1277 Geological Map of the Dominion of Canada and Newfoundland; lat. 42-00 to 70-00; long. 52-00 to 141-00; scale 1 in. to 100m.; Geology (1924).
- x1746 Occurrences of Platinium in Canada; lat. 42-00 to 75-0; long. 55-00 to 141-00; scale 1 in. to 200 m. (1919).
- x2030 Mineral Map of the Dominion of Canada; lat. 42-00 to 70-00; long. 52-00 to 141-00; scale 1 in. to 100 m. (1924).
- Distribution of early Precambrian Sedimentary Formations in the Canadian Shield; lat. 46-00 to 64-00; long. 70-00 to 115-00; scale 1 in. to 60 m. (1933).
820. Geological Map of the Dominion of Canada; lat. 42-00 to 76-00; long. 56-00 to 141-00; scale 1 in to 60 m. (1947) (50 cents).
870. Index Map of Canada according to the National Topographical System; scale 1 inch to 100 miles. (1946).
900. Canada Mining Areas; lat. 40-00 to 80-00 (approximately); long. 50-00 to 170-00 (approximately); scale 1 in to 125 m. (1955) (25 cents).
1045. Geological Map of Canada, scale 1 inch to 120 miles (1956) (50 cents) (with Economic Geology No. 1) (50 cents).
- 1045a-1 Metallogenic Map, Uranium in Canada scale 1 inch to 120 miles (1958) (Price 50 cents).
- G-88 Geological Map of Canada, - (Black and white, scale 1 inch to 200 miles.
- G-91 Map showing the Principal Coal, Iron Ore and Iron and Steel areas in relation to the St. Lawrence Seaway.

Northwest Territories

- 1055a Geological map of the District of Mackenzie, scale 1 inch to 20 miles (In Press).

Northwest Territories

(Regional)

- *1585 Mackenzie River basin; lat 53-15 to 70-00; long. 100-00 to 135-00; scale 1 in. to 50 m. (1922).
- *186A Explored routes between Lake Athabaska and Great Slave Lake on the Tazin, Taltson, Slave, and Peace Rivers; lat. 58-20 to 61-30; long. 108-30 to 114-30; scale 1 in. to 8 m. (1917). (With Memoir 84).
- 1872 Sketch map showing approximate geological structure of the Norman-Good Hope area, Mackenzie River; scale 1 in. to 10 m. (1922).
- 1873 Sketch map showing the geology along the Mackenzie River between the Ramparts and the delta; scale 1 in. to 45 m. (1922).
- *1956 Mackenzie River between Great Slave Lake and Simpson; lat. 60-40 to 62-30 long. 116-30 to 121-45; scale 1 in to 8 m. (1922).
- *1957 Mackenzie River between Simpson and Wrigley; lat. 61-48 to 63-26; long. 121-00 to 124-00; scale 1 in. to 8 m. (1922).
- 1963 Arctic coast of Canada between Darnley Bay and Bathurst Inlet; lat. 67-00 to 70-00; long. 108-00 to 124-00; scale 1 in. to 10 m. (1923).
- *1977 Mackenzie River between Norman and Beaver River; lat. 64-52 to 66-00; long. 125-30 to 129-00; scale 1 in. to 8 m. (1923).
- *2022 Mackenzie River between Wrigley and Norman; lat. 63-07 to 65-07; long. 123-08 to 126-55; scale 1 in. to 8 m. (1924).
- *219A Head of Cumberland sound and route to Nettilling Lake, Baffin Island; lat 65-30 to 67-00; long. 65-00 to 69-30; scale 1 in. to 8 m. (1928).
- *296A Great Bear Lake (McTavish Arm), Between Richardson Island and Hornby Bay, District of Mackenzie; lat. 65-30 to 66-50; long. 116-15 to 118-45; scale 1 in. to 4 m. (1933).
- 331A Rae-Great Bear Lake area, south sheet (between Rae and Faber Lake), District of Mackenzie; lat. 62-45 to 64-00; long. 115-45 to 117-45; scale 1 in. to 4 m. (1936).
- 332A Rae-Great Bear Lake area, centre sheet (between Faber and Hottah Lake), District of Mackenzie; lat 64-00 to 65-00; long. 117-00 to 119-00; scale 1 in. to 4 m. (1936).
- 333A Rae-Great Bear Lake area, north sheet (between Hottah Lake and Richardson Island), District of Mackenzie; lat. 65-00 to 66-45; long 117-00 to 119-00; scale 1 in. to 4 m. (1936).

* Out of Print

Note: All maps 25 cents each.

Northwest Territories (Cont'd)

- 377A Great Slave Lake, eastern portion of (west half), District of Mackenzie; lat. 61-00; long. 112-45; scale 1 in. to 4 m. (1936).
- 378A Great Slave Lake, eastern portion of (east half), District of Mackenzie; lat. 62-45; long. 110-30; scale 1 in. to 4 m. (1936).
- 525A Taltso Lake, District of Mackenzie; lat. 61-00 to 62-00; long. 110-00 to 112-00; scale 1 in. to 4 m. (1939).
- 526A Nonacho Lake, District of Mackenzie; lat. 61-00 to 62-00; long. 108-00 to 110-00; scale 1 in. to 4 m. (1939).
- 581A Beaulieu River, District of Mackenzie; lat. 62-00 to 63-00; long. 112-00 to 114-00; scale 1 in. to 4 m. (1941).
- 607A Fort Smith, District of Mackenzie; lat. 60-00 to 61-00; long. 110-00 to 112-00; scale 1 in. to 4 m. (1941).
- 644A Gordon Lake, District of Mackenzie; lat. 63-00 to 63-15; long. 113-00 to 113-30; scale 1 in. to 1 m. (1941).
- 645A Gordon Lake South, District of Mackenzie; lat. 62-45 to 63-00; long. 113-00 to 113-30; scale 1 in. to 1 m. (1941).
- 690A Snare River, District of Mackenzie; lat. 63-00 to 64-00; long. 115-00 to 117-00; scale 1 in. to 4 m. (1942). (With Memoir 235).
- 697A Ingray Lake, District of Mackenzie; lat. 64-00 to 65-00; long. 115-00 to 117-00; scale 1 in. to 4 m. (1942). (With Memoir 235).
- 709A Yellowknife Bay, District of Mackenzie; lat. 62-15 to 62-30; long. 114-00 to 114-30; scale 1 in. to 1 m. (1942).
- 738A Mackay Lake, District of Mackenzie; lat. 63-00 to 64-00; long. 110-00 to 112-00; scale 1 in. to 4 m. (1944).
- 868A Prosperous Lake, District of Mackenzie; lat. 62-30 to 62-45; long. 114-00 to 114-30; scale 1 in. to 1 m. (1946).
- 977A Lac de Gras, District of Mackenzie; lat. 64-00 to 65-00; long. 110-00 to 112-00; scale 1 in. to 4 m. (1949).
- 1011A Lac Alpine Channel; lat. 66-15 to 66-30; long. 117-30 to 118-00; scale 1 in. to 1 m. (1952).
- 1013A Walmsley Lake; lat. 63-00 to 64-00; long. 110-00 to 112-00; scale 1 in. to 4 m. (1952).
- 1014A Cansell River, District of Mackenzie; lat. 65-00 to 66-00; long. 116-00 to 118-00; scale 1 in. to 4 m. (1953).

Note: All maps 25 cents each.

Northwest Territories (Cont'd)

- 1017A Giauque Lake, District of Mackenzie; scale 1 in. to 2000 ft. (1953)
(With Memoir 266).
- 1021A Ghost Lake; lat. 63-45 to 64-00; long. 115-00 to 115-30; scale 1 in to
1 m. (1954).
- 1022A Ranji Lake; lat. 64-00 to 64-15; long. 115-00 to 115-30; scale 1 in to
1 m. (1954).
- 1023A Chalco Lake, lat. 64-15 to 64-30; long. 115-00 to 115-30; scale 1 in to
1 m. (1954).
- 1024A Mathews Lake, District of Mackenzie; lat. 63-56 to 64-08; long. 111-04
to 111-22; scale 1 in. to 2000 ft. (With Memoir 283).
- 1025A Courageous Lake, District of Mackenzie; lat. 64-08 to 64-18; long. 111-
-10 to 111-30; scale 1 in. to 2000 ft. (With Memoir 283).
- 1031A Aylmer Lake, District of Mackenzie; lat. 64-00 to 65-00; long 108-00
to 110-00; scale 1 in. to 4 m.
- 1032A Lower Mackenzie River Area, Northwest Territories and Yukon Territories
Sheet 1; lat. 63-00 to 65-30; long. 123-30 to 131-00; scale 1 in. to
8 mi. (1954) (With Memoir 273)
- 1033A Lower Mackenzie River Area, District of Mackenzie, sheet 2; lat.
65-30 to 67-30; long. 126-00 to 131-00; scale 1 in. to 8 m. (1954)
(With Memoir 273).
- 1034A Lower Mackenzie River Area, Northwest Territories and Yukon Territory,
Sheet 3; lat. 65-00 to 67-00; long. 131-00 to 136-00; scale 1 in.
to 8 m. (1954) (With Memoir 273).
- 1054A Cornwallis Island (In Press).
- 1061A Cumberland Sound (In Press).

Note: All Maps 25 cents.